

680735

Rancheria Mining Co. Ltd.  
Box 327  
Watson Lake, YUKON  
November 2, 1965

Mr R.H. McCrimmon  
Gold Commissioner  
Dept. Mines and Natural Resources  
Victoria, B.C.

~~3613~~

Dear Sir:-

Re file 22 Liard. Copies of your letters of August 18th and October 18th/65 have just reached me.

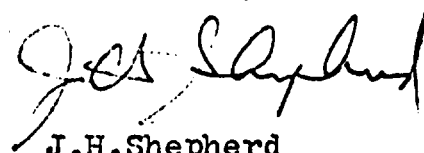
Concerning item (1) in your August 18th letter. 1300 soil samples were taken during the geochemical survey on the "AMY" group of claims. These samples were taken at 100 foot intervals on every cross line shown on our grid. The sampler dug a hole from 8" to 12" deep at each station and collected approximately one half cup full of material at the bottom of the hole. These samples were all dried and sieved through an 80 mesh screen. The minus 80 mesh portion was sent to Barringer Research Limited, Toronto, for analysis of its heavy metal content. The results were then plotted and contoured to give the finished Soil Geochemical Map.

The individual samples were each sealed in special paper sample envelopes and these were packed in cardboard boxes before being shipped to Barringer Research.

Item (2) The maps you returned to Toronto to be signed must still be there. I am going to Toronto next week and will see that they get signed and returned to you immediately.

Item (3) I do not know if Dr. Gross is licened to practice in British Columbia but will check on this matter in Toronto.

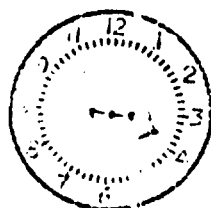
Yours truly



J.H. Shepherd

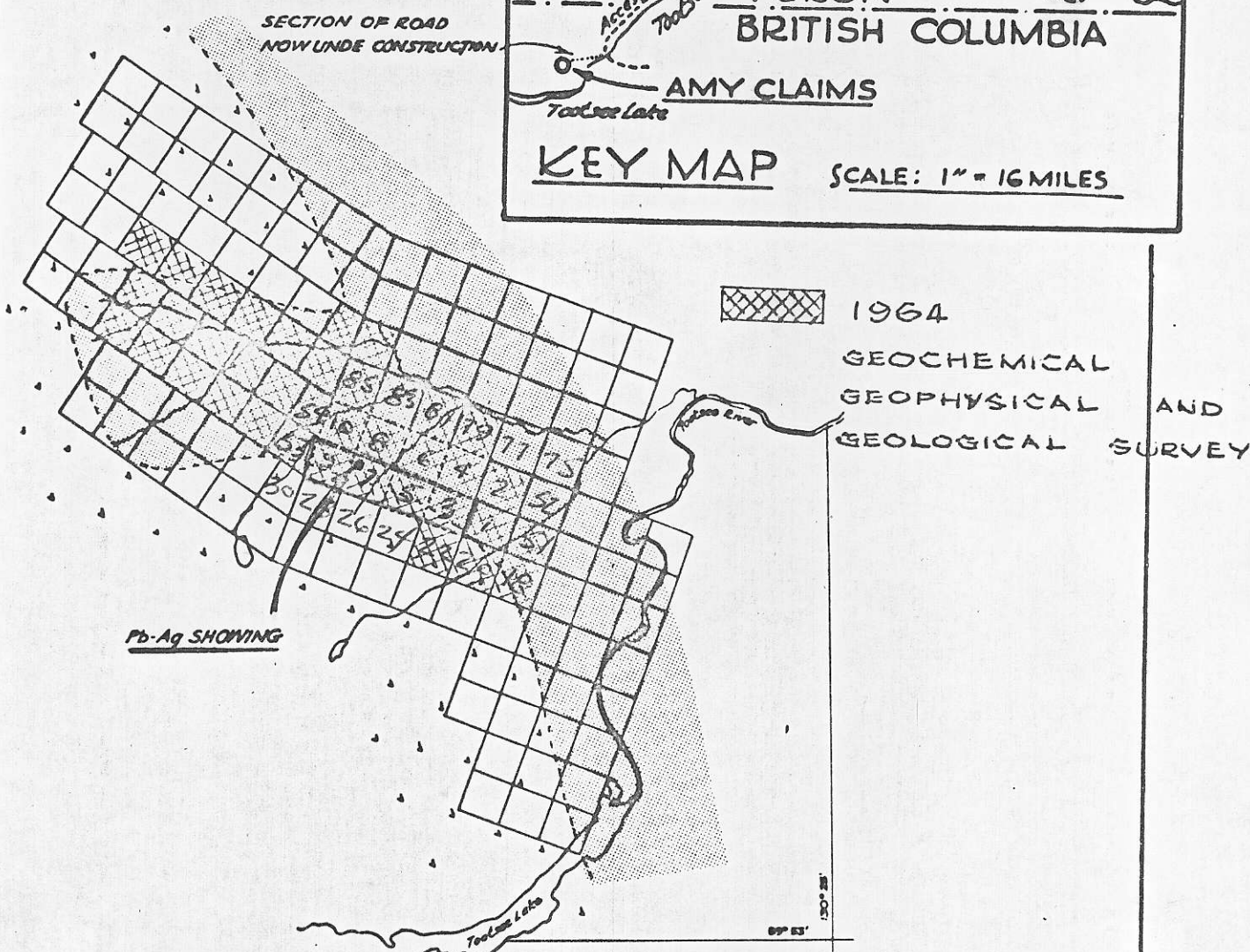
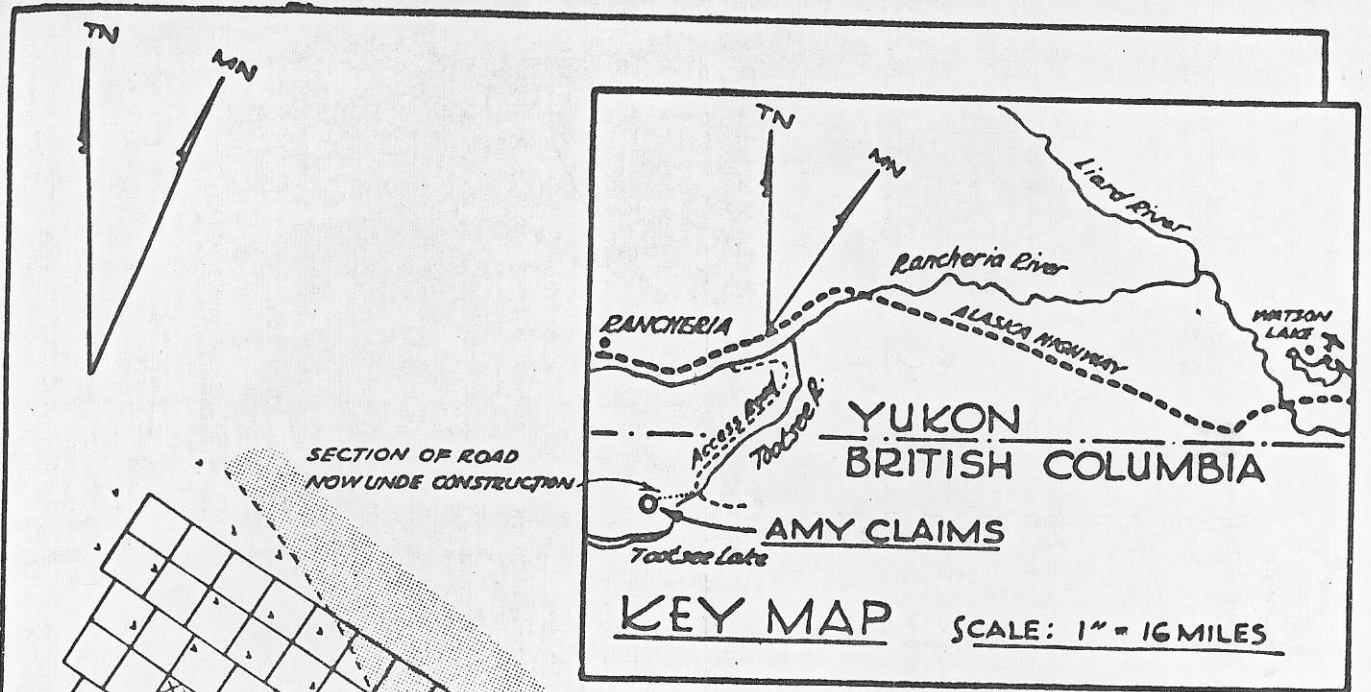
Geologist- Rancheria Mining Co. Ltd.

NOV 5 '65 PM

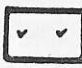



DEPT. OF MINES  
AND PETROLEUM RESOURCES

REFERRED TO	DATE	INITIAL
D.M.		
C.C.		
D.C.C.	10/11/65	[Signature]
D.C.C.		
G.C.		
AGENTS		
C.M.S.		
C.I.		
C.A.		
R.T.		
C.P.E.		
J.M.	9/11/65	[Signature]
F.B.	9/11/65	[Signature]
FILE		



**LEGEND**

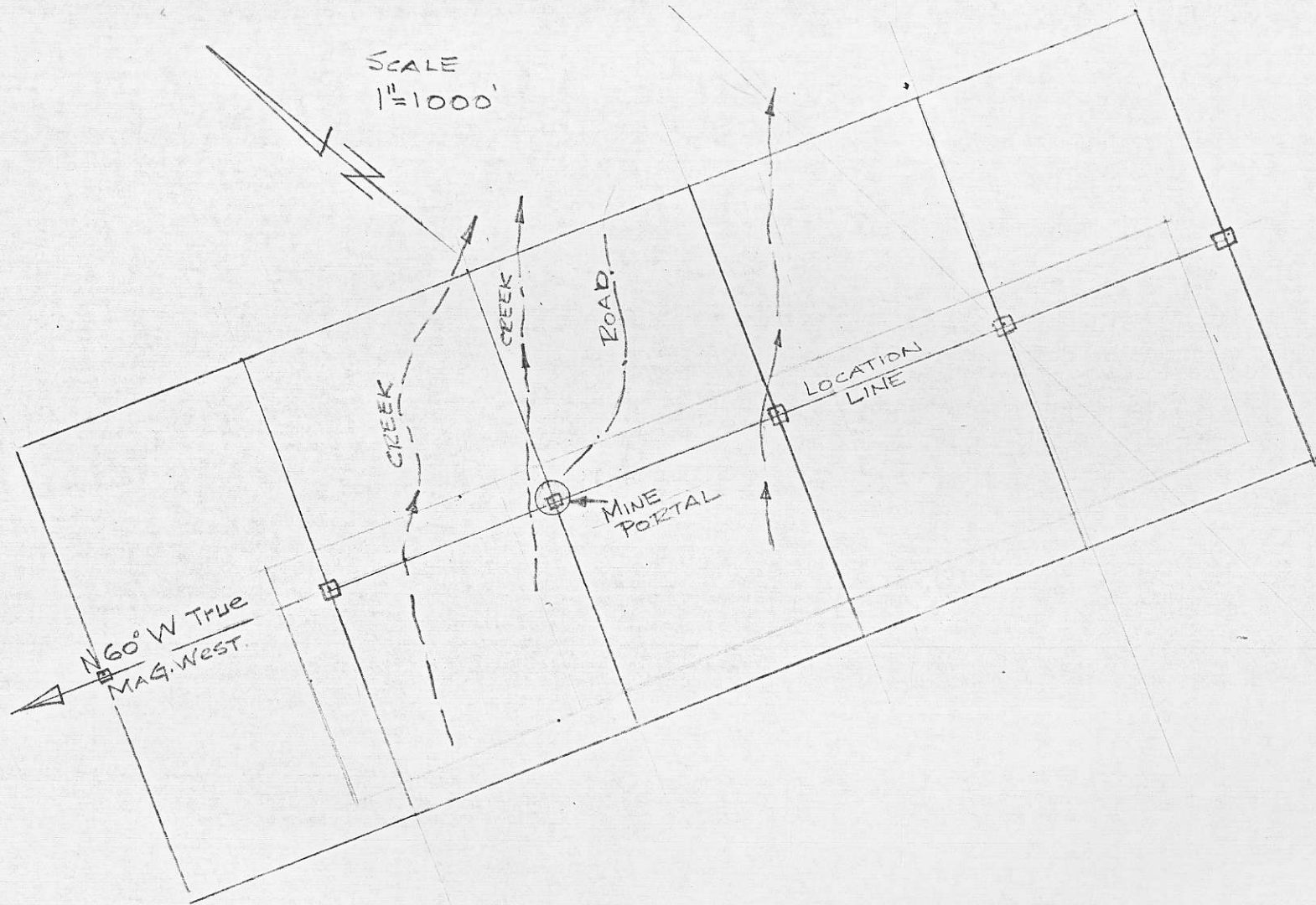
-  Granite
-  Sediments (mainly)

**RANCHERIA MINING CO. LTD.**  
**GEOLOGICAL-CLAIM LOCATION MAP**  
SCALE: 1" = 1 MILE

FIGURE 1.

E.D.B. AUG. 8, 1963

60 000 TONS.      2.4 oz Ag.  
4.87% Pb  
6.83% Zn.



STAKING SKETCH.

□ ESTIMATED LOCATION OF  
OPEN GROUND AMY#3,5,7&9