

outlined in red Andy Robertson

outlined in Blue Geo Chem anomaly

(No 14 D.D.H by A. Robertson 1965
310 ft of .10 mas2
Near sample No 5

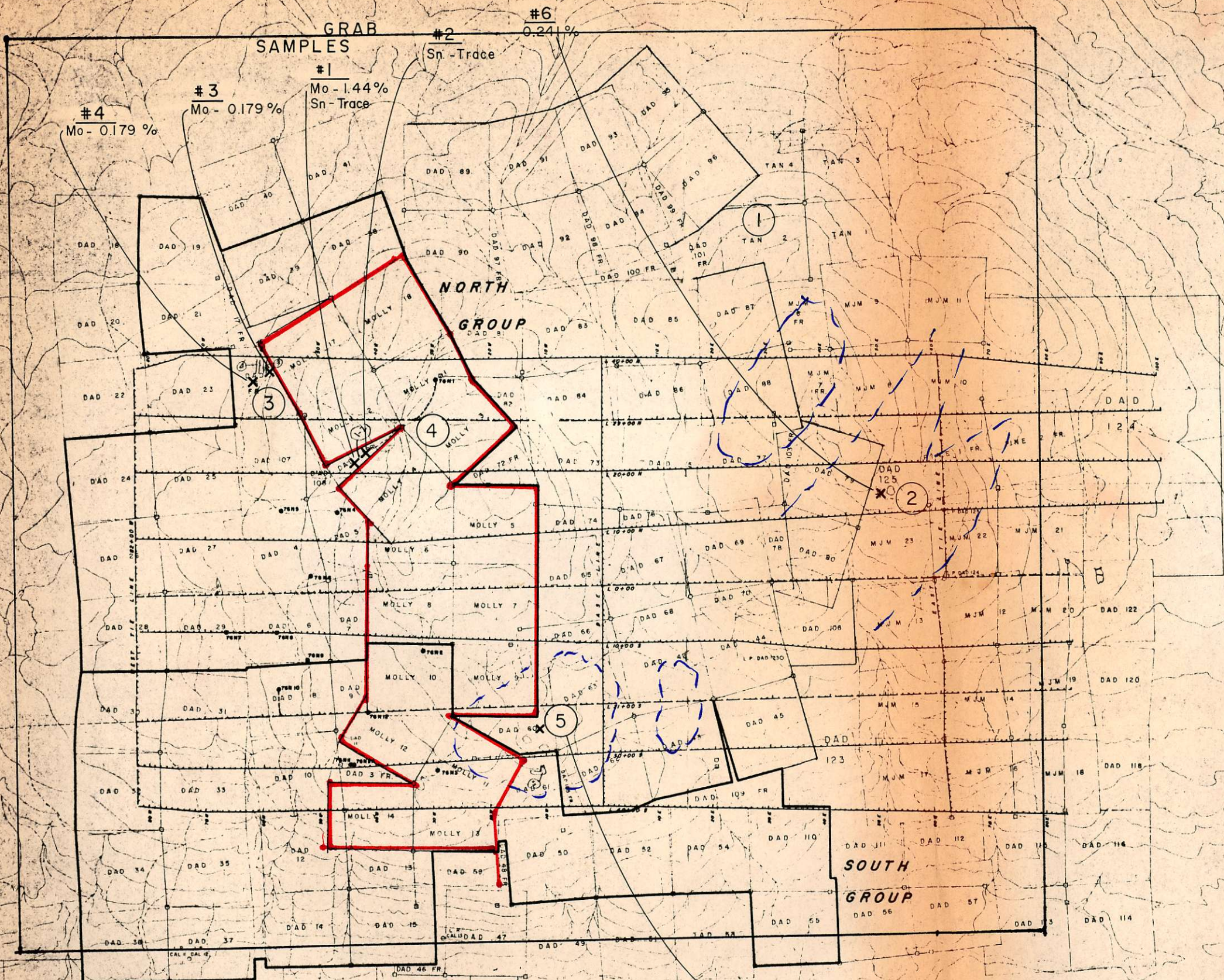
Black outline

Claim boundary

(area of No 3rd sample (Pyrite) has
strong MAG and EM over large area)

Please send samples back
also report.

Warran



LEGEND

- Grid picket line.
- Claim post, claim location line.
- Claim boundary.
- Legal corner post, claim boundary.
- Claim unit boundary.
- Road and/or trench.
- Topographic contour, (contour interval 25').
- Stream.
- Swamp, swamp boundary.
- Chained line.
- Cul and "chañed" line.
- Drill site access road.
- Percussion drill hole collar location.
- Claim group boundary.

TRENCHING

- ① NORTH SHOWING - 900 FT.
- ② CENTRAL SHOWING - 200 FT.
- ③ N-W SHOWING - 800 FT.
- ④ A-LINE - 60 FT.
- ⑤ S - W SHOWING - 70 FT.

NITHEX EXPLORATION LTD (NPL)
MODIFIED PLAN
 SHOWING ASSAY RESULTS-TRENCHING
 NOVEMBER 6, 1978

AMAX POTASH LIMITED

NITHI MOUNTAIN PROPERTY
 OMINECA MINING DIVISION - BRITISH COLUMBIA

DRILL HOLE LOCATION MAP

SCALE 1 : 12,000

DATE REVISIONS: _____ DATE PRINTED: _____ Drawn by: H.C.P.
 DATE: _____ N.T.S. File: 93 F 15

To accompany "1976 ASSESSMENT REPORT - NITHI MOUNTAIN PROPERTY" by: F.R. Harris

FIG. 2