

THE C.D. MINING
ASSAY LONG SECTION

COMPANY LTD.
14-1 STOPE

GOLD at \$38.40 Per ounce

$\frac{2.5}{1175}$ sample across 2.5 feet assayed \$1175

AUG/41

1 in. : 10ft.

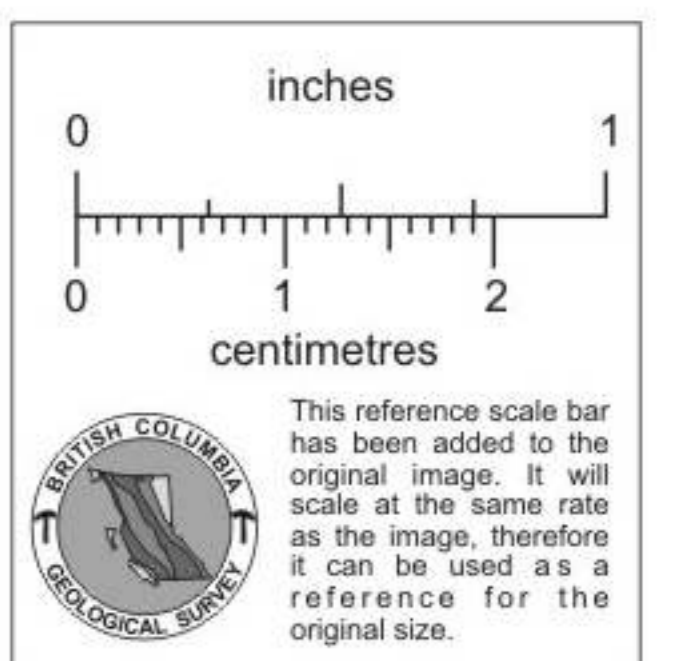
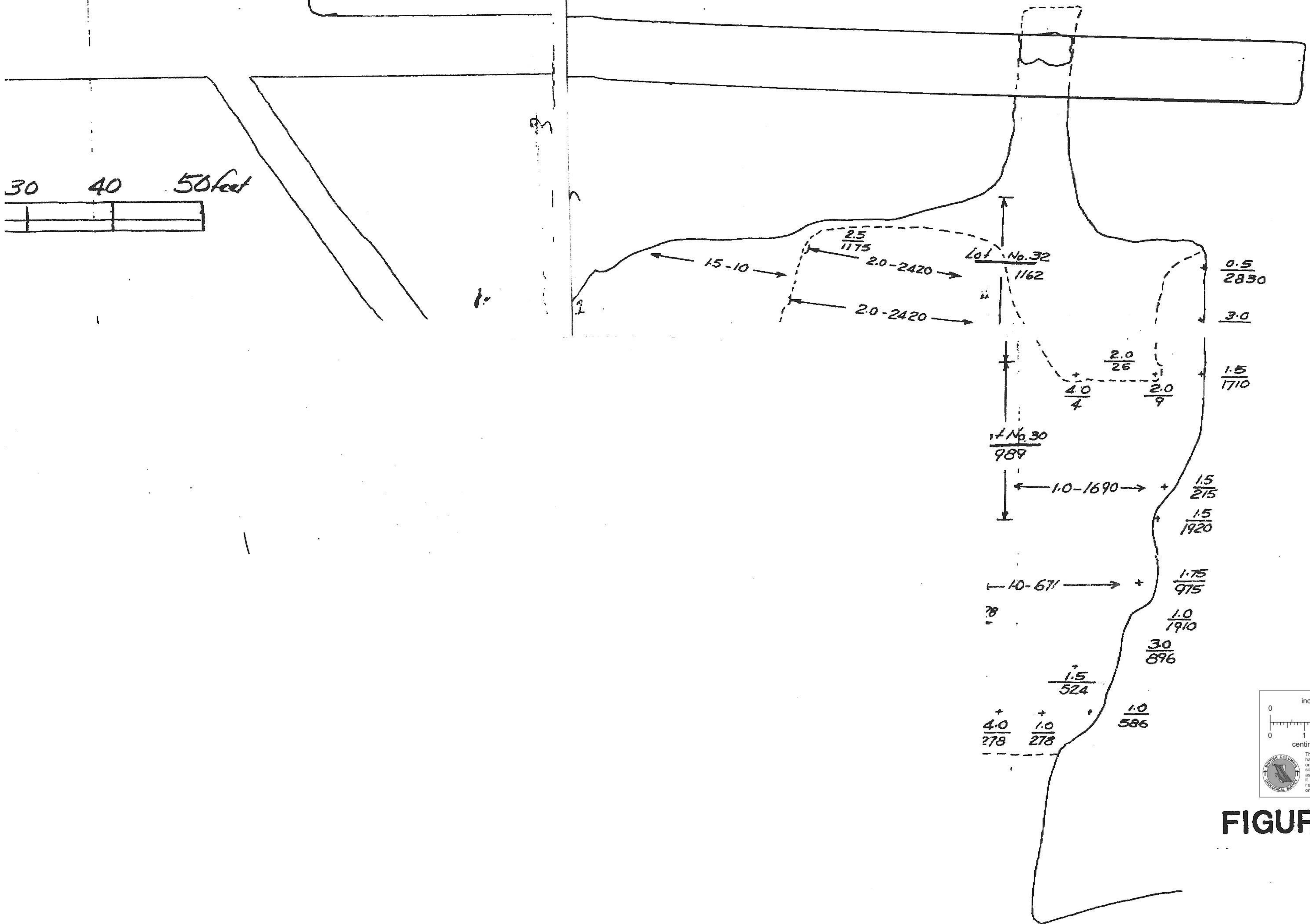
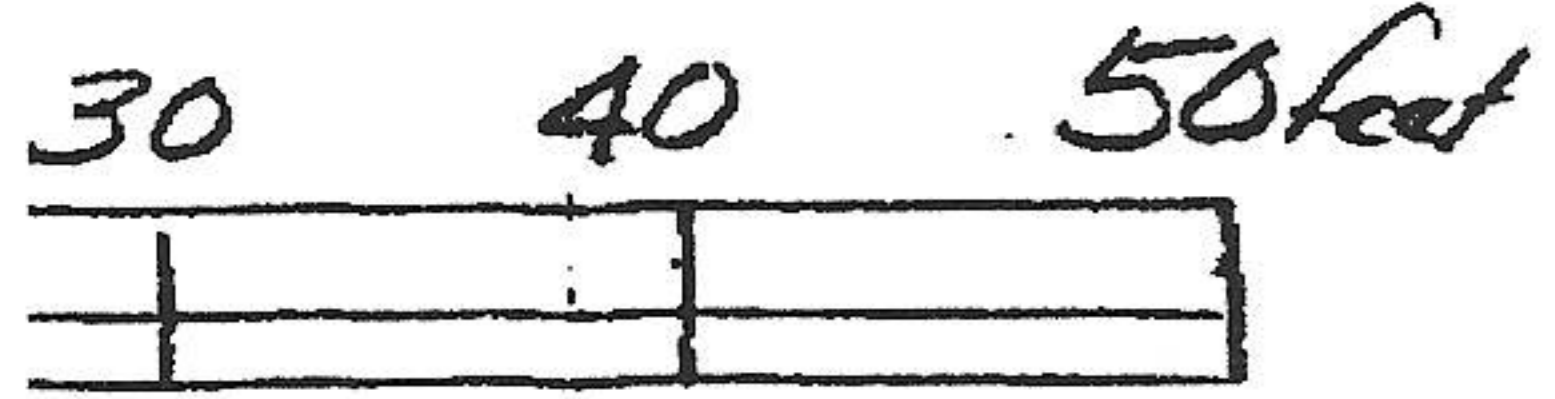


FIGURE 5A

$\frac{0.5}{634}$ $\frac{4.0}{74}$

680527
92E
Zeballos
Area