



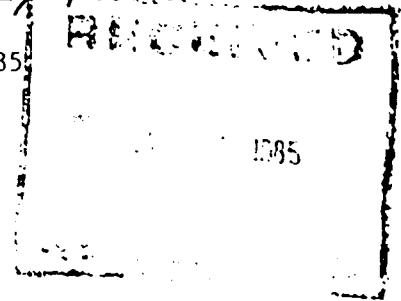
**LAKEFIELD RESEARCH**  
A DIVISION OF FALCONBRIDGE LIMITED

680521

PHONE (705) 652-3341  
TELEX NO. 06962842

Valentine Mountain  
92C/9 Au

November 22, 1985



Mr. T. Chandler  
Falconbridge Limited  
6415 - 64th Street  
DELTA, B.C.  
V4K 4E2

Dear Mr. Chandler:

Re: Gold Content Determinations

We have enclosed an assay certificate with the results of the first batch of samples completed.

The procedure we have followed has been:

- (1) Crush sample to minus 10 mesh.
- (2) Ball mill grind sample to approximately 90 % passing 200 mesh.
- (3) Transfer to mechanically agitated vessel and adjust pulp density to 35-40 % solids.
- (4) Cyanide for minimum 48 hours with 1 g/L NaCN pH 11.
- (5) Add 10-15 g/L activated carbon and agitate for further 4-8 hours.
- (6) Take 1 litre pulp sample, screen out carbon, filter for residue and barren solution sample.
- (7) From remainder of pulp screen out all carbon, dry and weigh.
- (8) Assay residue, solution; and carbon for Au.
- (9) Calculate Au content.

Yours sincerely,  
LAKEFIELD RESEARCH

*K.W. Sarbutt*

K.W. Sarbutt,  
Chief Project Engineer

KWS/sem

Encl.

**CERTIFICATE OF ANALYSIS**

FROM: Falconbridge Limited  
6415 - 64th Street  
DELTA, B.C.  
V4K 4E2

Date: Nov. 22, 1985

Received: \_\_\_\_\_

Our Reference No.: LR 3059

Your Reference No.: \_\_\_\_\_

Invoice No.: \_\_\_\_\_

Samples submitted to us show results as follows:

Sample Number	Carbon g	Residue g	Solution mLs	Carbon Au g/t	Residue Au g/t	Solution Au mg/L	% Au Carbon	Dist. Residue	Calc Head. Au g/t	
A-1	25651	124.5	5426	9600	600	0.42	0.029	96.69	2.95	14.24
A-2	52	114.3	5443	10773	669	0.30	0.011	97.76	2.09	14.37
A-3	53	13.4	634.3	1010	82.5	0.04	0.022	97.58	2.24	1.79
A-4	54	32.9	1773	880	195	0.94	0.006	79.33	20.61	4.56
A-5	55	114.8	5679	9664	1595	0.53	0.12	97.77	1.61	32.98
A-6	56	116.1	5590	9859	401	0.03	0.012	99.39	0.36	8.38
-7	57	7.5	346.6	600	46.1	0.03	0.002	95.75	2.91	1.03
-8	58	15.6	751.2	1180	78.4	0.02	0.002	98.60	1.21	1.65
-9	59	32.3	1769	850	78.6	0.33	0.002	81.26	18.69	1.77
-10	25660	39.4	1968	840	300	0.32	0.008	94.89	5.06	6.33
-11	61	60.8	3081	4615	323	0.30	0.014	95.21	4.48	6.70
-12	62	42.9	2167	770	63.5	0.03	0.004	97.56	2.33	1.29
-13	63	46.1	2288	900	50	0.08	0.003	92.54	7.35	1.09
-14	64	25.4	1270	2540	156	0.45	0.012	86.81	12.52	3.59
-15	65	71.2	3742	7522	805	0.11	0.017	99.07	0.71	15.46
-16	66	43.4	2478	4778	8.7	0.08	0.002	64.50	33.87	0.24
-17	67	18.1	848.4	1320	73.1	0.02	0.002	98.54	1.26	1.58
-18	68	28.1	1621	3242	311	2.12	0.005	71.68	28.19	7.52
-19	69	67.2	3226	4881	5.96	0.02	0.001	85.23	13.73	0.15
-20	25670	155.9	7674	9021	186	0.04	0.008	98.71	1.04	3.83
-21	71	24.4	1214	960	29876	26.70	3.53	95.32	4.24	629.96
-22	72	96.1	4303	6196	32.1	0.01	0.002	98.24	1.37	0.73
-23	73	50.7	2550	3808	82.7	0.03	0.002	98.03	1.79	1.68
-24	74	81.2	4071	6313	23.7	0.03	0.002	93.46	5.93	0.51
-25	75	454.5	22085	37381	65.3	1.41	0.004	48.68	51.08	2.76
-26	76	42.9	2129	880	9834	4.15	0.34	97.88	2.05	202.45
-27	77	129.4	5617	9125	221	0.45	0.009	91.64	8.10	5.56
-28	78	420.9	27325	48968	98.4	0.13	0.011	91.01	7.81	1.67
-29	79	554.1	19743	36757	30.4	0.02	0.003	97.09	2.28	0.88
-30	25680	250.7	12200	23660	92.1	0.23	0.004	88.84	10.80	2.13

To: Mr. T. Chandler (2)

SIGNED K.W.S Sarbutt  
MANAGER

K.W. Sarbutt, Chief Project Engineer



P.O. Box 430, 185 Concession St., Lakefield, Ontario, Can. K0L 2H0  
Phone: (705) 652-3341 Telex No. 06 962842

### CERTIFICATE OF ANALYSIS

FROM: Falconbridge Limited  
6415 - 64th Street  
DELTA, B.C.  
V4K 4E2

Date: Nov. 22, 1985

Received: \_\_\_\_\_

Our Reference No.: LR 3059

Your Reference No.: \_\_\_\_\_

Invoice No.: \_\_\_\_\_

Samples submitted to us show results as follows:

Sample Number	Carbon g	Residue g	Solution mLs	Carbon Au g/t	Residue Au g/t	Solution Au mg/L	% Au Dist.		Calc Head Au g/t	
							Carbon	Residue		
A-31	25681	120.1	5787	10643	22.1	0.03	0.003	92.81	6.07	0.49
A-33	83	118.1	5776	11732	179	2.91	0.003	55.66	44.25	6.58
-37	84	150.9	7591	10428	32.7	0.02	0.006	95.84	2.95	0.68
-35	85	121.3	6051	9127	3.30	0.02	0.001	75.46	22.82	0.09
-38	88	119.7	5549	8312	8.4	0.23	0.002	43.75	55.53	0.41
-39	89	231.2	11393	20522	9.9	0.02	0.0015	89.85	8.94	0.22
-44	25694	329.1	15912	33789	5.54	0.02	0.002	82.53	14.41	0.14
-45	25695	197.2	10171	20529	152	6.05	0.004	32.73	67.18	9.01

To: Mr. T. Chandler (2)

SIGNED \_\_\_\_\_

*K.W. Sarbutt*  
MANAGER

K.W. Sarbutt, Chief Project Engineer

NOTE: Rejects will be discarded after 6 months.