

D. White
notes

Elizabeth Gold

680439
092/0

APP

Description

A crown grants, 7400, 7401, 7402, 7403 owned 51% by D. White of Vancouver and 49% by T. Illidge of Goldbridge.

History

1939	Bralorne	stripping, 9 Diamond Drill holes, 3000' of tunnelling
1949		
1956	Bethlehem	780' of Tunnelling
1957		
1958	Dr. W.H. White	9 Ton Bulk sample removed
1930	Prism Res.	geological work
1986	D. White and	found convincing evidence that the target was missed, certainly by Bethlehem and possibly by Bralorne as well
1987	T. Illidge	
1988 - 1989	"	spectacular quartz vein uncovered

Value

Ⓐ assuming the High Grade Zone is accessible from 7230 and from 6540, then adits, roads, and geological work become assets; worth perhaps, \$700,000.

Ⓑ Au Reserves ① probably 4000 oz. Au minimum and could easily be 10,000 oz Au or more in the West Vein alone. ② other good potential ore producing structures exist on the property.

Investment

must be sufficient to identify reserves and commence production

David White
Notes 1989

Our DISCOVERY of 75' of spectacular quartz vein lies under a small glacier. The glacier posed a puzzle that frustrated previous development attempts. There are two ways to handle the problem: ① go in with a big cat with rippers
② go in early and disrupt the snowfield and then return later after a melt has occurred.

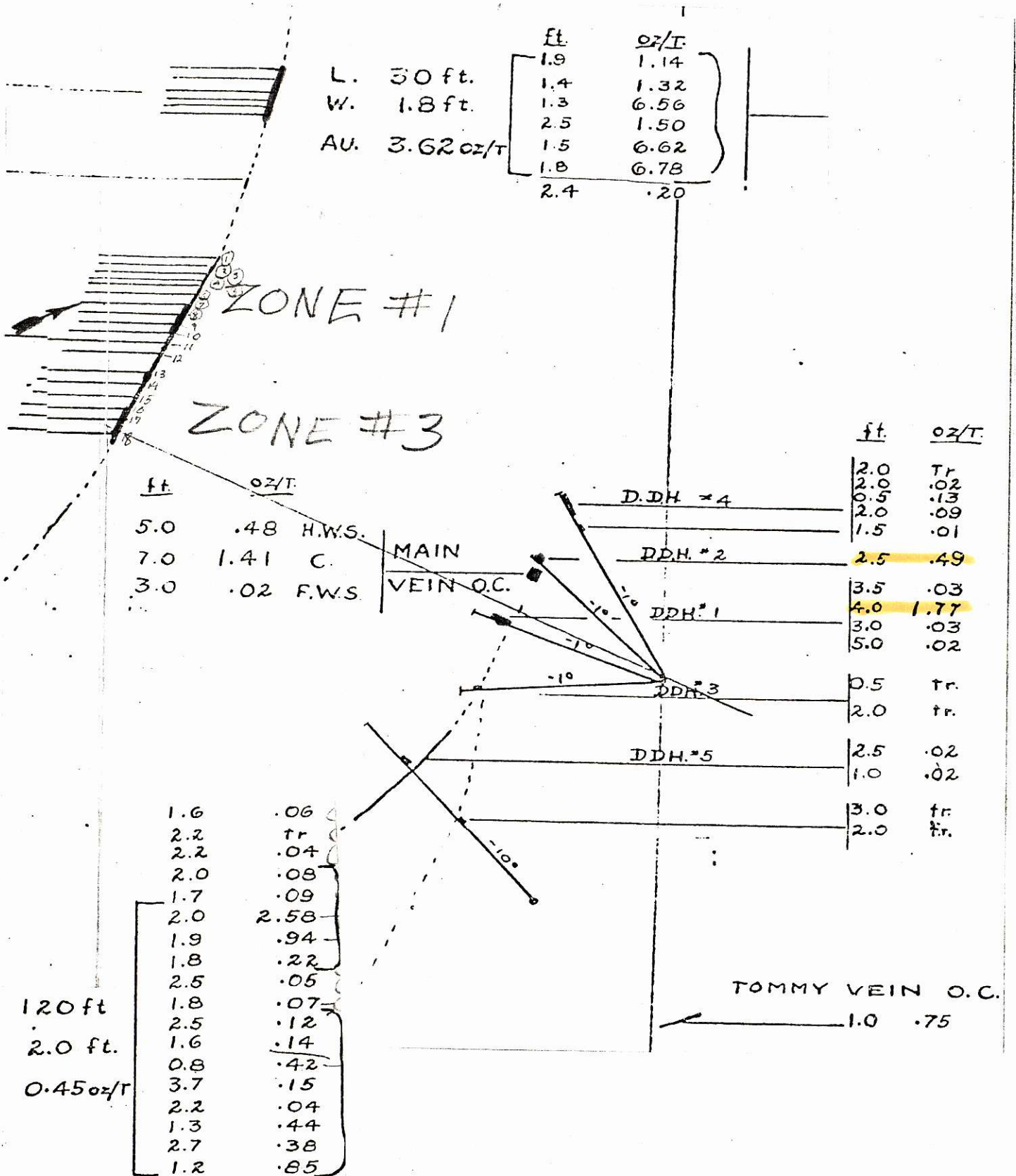
We used the 2ND method in 1986 and 1989. The problem with working after the melt is that the wet ground is unstable and landslides are common.

For 1990 we want to go early with a big cat so that when we open up the Discovery it will stay open. Furthermore we may have to "bench-down" 20' in order to follow the 1989 DISCOVERY and re-discover the 1941 DISCOVERY. The frost should hold the uphill ground stable.

Our objective is to thoroughly clean and sample and survey the two DISCOVERIES. We could drill for downward extension, or we could rehabilitate the 7220 Adit and extend the drift. Tom and I vote for the latter.

If the budget permits, we would like to expose and sample the West Vein all the way to the David Vein, and the Main Vein below DISCOVERY.

David
Whites
notes
1987



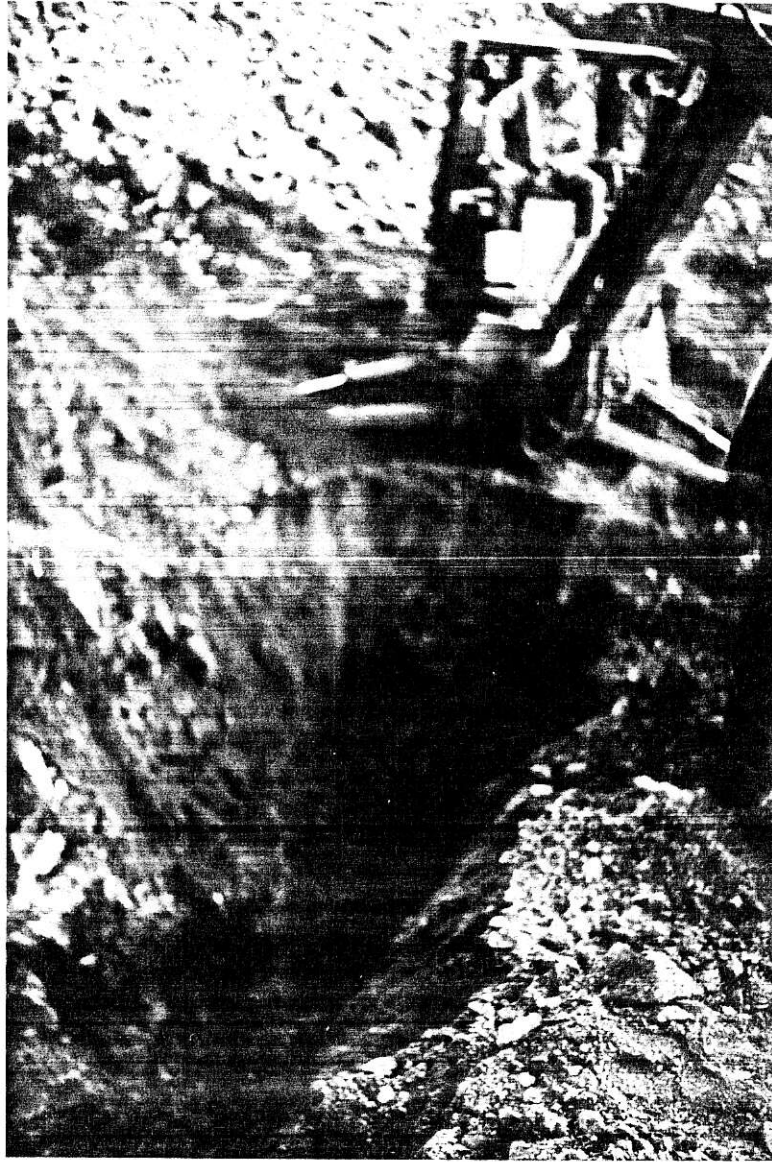


7230 Adit road requires work May 31
1987 - in 1986, June 17th, the road was
closed view from switchback and
close up



Upper Blue Creek Valley
May 31st 1987 elevation 7000

David Whites
photos



MOST NORTHERN POINT
ASSAYED 200 OZ AU/TON
- worth a second look!

David Whites
Notes

Proposed 1990 Program Budget \$100,000.

- ① Open the Elizabeth Early - frost should hold the "screes"
- ② Re-expose clean and sample 1989 and 1991 DISCOVERIES
- ③ Survey Drift FACE and "DISCOVERY" for relationship.
- ④ 7220 → re-timber, bring out 5 sets, re-track first 100', install air system, transport Tom's Big Compressor, establish a sump re-cycling system for water, and commence DRIFT EXTENSION
- ⑤ Locate a satisfactory GEOLOGIST to document the 1990 Program, ~~and~~ handle the surface and underground sample programs, and write a report.

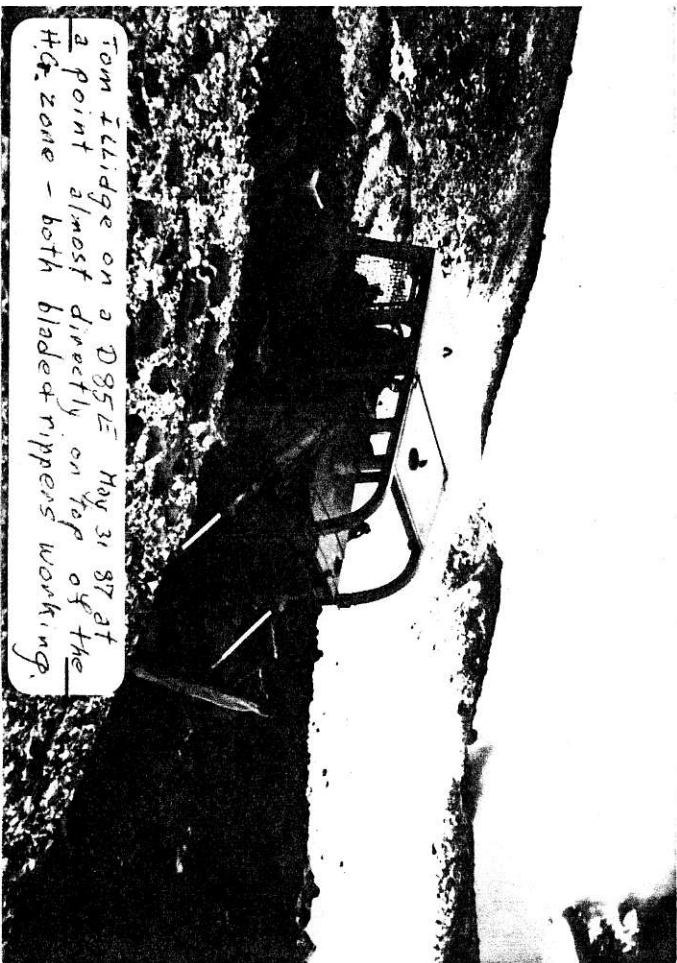
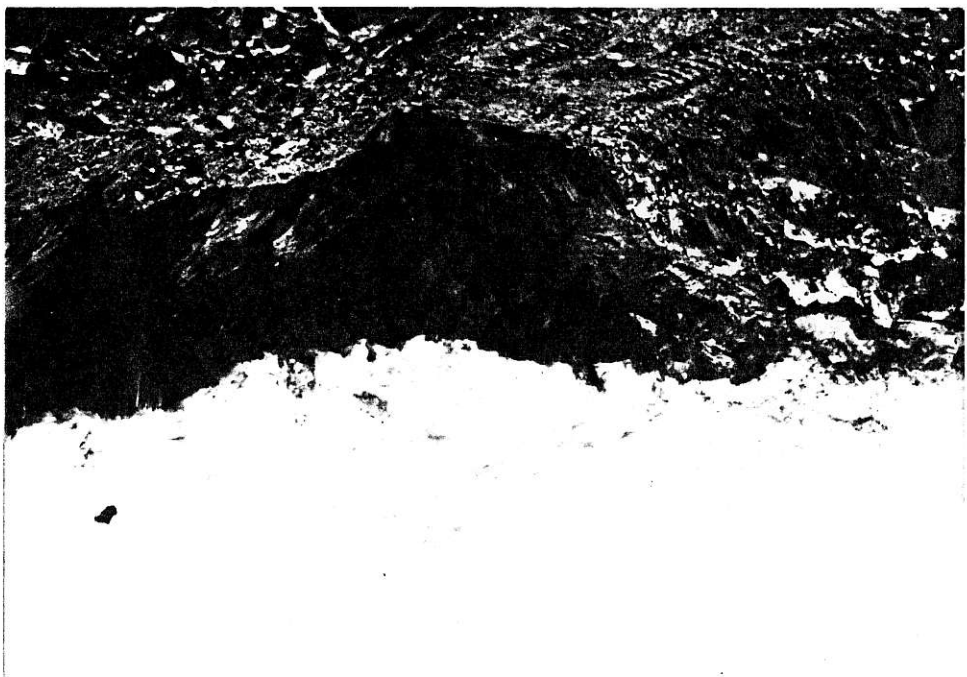
Note: An alternate strategy would be to collect a 100 TON BULK SAMPLE from SURFACE and transport it to Williams Lake for processing and use the proceeds to extend the Drift.

David Whites
Notes 1990

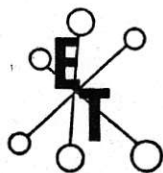
Parameters: Ideal Partner

- ① Would accept 50% N.P.I. in exchange for putting property into commercial production by spending at least one million dollars over three years to produce a "bankable" feasibility study and then using it, together with the property title to secure attractive financing, preferably by arranging a "gold loan".
- ② Would retain David and Tom as prime contractors providing rates are competitive and work is competent and professional.
- ③ Would provide \$10,000 (pre-signing) "look-see" money to open & clean roads, adits and trench.
- ④ Would reimburse David & Tom \$30,000
- ⑤ May be willing to enter into a separate "Bulk Sample" contract.
- ⑥ May allow David and Tom, at their own expense, to remove a 500 Ton "Bulk Sample" from surface.
- ⑦ May offer attractive share options.
- ⑧ May offer free expertise until production

David White's
notes



Tom Illidge on a D85LE May 31 87 at
a point almost directly on top of the
H₂O zone - both bladed rippers working.



ECO-TECH LABORATORIES LTD.

ASSAYING - ENVIRONMENTAL TESTING
10041 East Trans Canada Hwy., Kamloops, B.C. V2C 2J3 (604) 573-5700 Fax 573-4557

November 1, 1988


CERTIFICATE OF ANALYSIS ETK 88-603

TOM ILLIDGE
GENERAL DELIVERY
GOLDBRIDGE, B.C.
VOK IPO

SAMPLE IDENTIFICATION: 3 ROCK samples received October 25, 1988

ET#	Description		Au (g/t)	Au (oz/t)	Au (g/t)
603 - 1	1	36"	33.29*	.971	22.1
603 - 2	2	23"	10.86*	.317	3.9
603 - 3	3	30"	13.93*	.406	6.9

NOTE: * ENTIRE SAMPLE PULVERIZED FOR METALLIC ASSAY


ECO-TECH LABORATORIES LTD.
Frank J. Pezzotti, A.Sc.T.
B.C. Certified Assayer