

BLACKDOME MINING CORPORATION

P.O. BOX 549, CLINTON, B.C. V0K 1K0

680409
Fame
Property

DIRECT TELEPHONE LINES TO MINESITE:

FROM:
VANCOUVER 684-6031
KAMLOOPS 374-8338
100 MILE HOUSE 395-3960

January 5, 1989

920/7EW

920/10EW

RECEIVED
JAN 11 1989

Albert Reeve,
904-675 Hastings Street,
Vancouver, B. C.
V6B 1N2

Dear Bert:

Hope you are feeling better and had a good Christmas. Ivor passed a message on to me that you would like a copy of my file on the Gaspard Lake Property. I have enclosed a copy of it with this letter. There isn't much there, just the promotional memo that Barney Bowen gave us and a copy of my memo to Peter Busse regarding our visit to the property. More material may be available in the files that came to us from the Vancouver office. If anything turns up I'll send it to you.

Best regards,



D. W. Rennie

BLACKDOME MINING CORPORATION

DATE: October 31, 1988

TO: P. Busse

FROM: D. Rennie

SUBJECT: Visit to Canamax's Gaspard Property
=====

On Friday, October 27, Ivor Watson and myself visited the Gaspard Lake property presently held by Canamax under option from Barney Bowen. They have just recently completed a short drilling programme and invited us to have a look at their results in exchange for a visit and tour of our operation. We were met at the P&T logging camp by Chris Hodgson, Regional Manager for Western Canada, and Fred Harris, Project Geologist. Canamax uses this camp as their base of operations for this project.

The property, when offered to us, had a surface showing of volcanic rocks which had been hydrothermally altered as well as an outcrop of quartz veining located some 50 to 100 metres to the south. The quartz veining was accompanied by quartz float scattered over a wide area. Gold values in this material ranged from 0.1 to 1.0 ounces per ton. The discovery showing has quartz veining, breccias and stockworks exposed over a strike length of about 20 metres or so, over widths of up to 20 cm. Minor to moderate bleaching and clay alteration occurs with the quartz.

Canamax has located two other quartz vein occurrences on the property. These are situated some 3/4 of a kilometre to the northeast of the discovery showing and contain values in the order of 1 to 5 grams/tonne. The quartz veining here is consistent in character with that in the discovery showing and appears very like some of the veins that we see here. They most resemble the quartz veining seen in the Giant Vein system. Medium- to fine-grained quartz forms fracture- and breccia-fillings hosted in intermediate volcanic rocks. The degree of clay alteration in the showings is minimal and vein widths vary from 20 cm to 3 m.

Surface work done to date includes geological mapping, prospecting, soil geochemistry, trenching and diamond drilling. The prospecting was responsible for discovery of the two "new" showings. Soil geochemical results are not in as yet.

The trenching is very limited in scope and is mostly in the form of hand trenches. This makes evaluation of the veins very difficult as only very limited strike lengths, in the order of 5 to 20 metres, have been developed. Some backhoe trenching was done, but due to terrain problems, only limited exposures were developed. The Canamax people realize that much more trenching should be done, especially after seeing how we do our trench work.

MEMO TO: P. Busse

PAGE 2

A total of eight short diamond drillholes were completed this year. Three were drilled under the discovery showing, one under the best of the two new showings and the rest were scattered about near the discovery showing. The results were not impressive, with very few interesting numbers returned. In zones that were sampled, all of the core was sent for assay except for a short section which was left to serve as an example of what was taken. This made it almost impossible to get a feel for what they were getting in the zones. Fred Harris reports that they obtained only weak quartz structures under the discovery showing and strong shearing and clay alteration in all the holes. In the last hole, which was drilled under one of the new showings, the drill was unable to proceed through the structure and the hole was stopped after they had just entered the zone. A very short piece of core was returned from the bottom of the hole which displayed very interesting quartz veining.

Both Ivor and I were unable to draw much of a conclusion from viewing what core they had. We both agree that the drilling was done prematurely and that trenching is the most prudent course to follow. The Canamax people indicated that they would like to do more trenching, more extensive geochemistry and, possibly, some geophysics. However, to do this, they must first convince their head office that it is warranted to continue the work. Since I have no feeling for what their basic criteria are for continuing or cancelling a project, I cannot predict what their chances are.

The property still looks attractive to me and I have indicated to Mr. Hodgson that Blackdome is still interested in it. If they have difficulty in obtaining funds they may invite us to participate with them in some form of joint venture. It was very fortunate that they called us and gave us a chance to establish cordial relations. I will continue to monitor their progress.

D. W. Rennie,
Chief Geologist/Engineer

FAME GOLD - SILVER PROPERTY

B. K. Bowen & A. C. Gordon

FAME GOLD-SILVER PROPERTY

The Fame gold-silver property is located in the Blackdome Mountain area of southwestern British Columbia and is easily accessible by road. The property consists of two claims (40 units) which are jointly owned by B.K. Bowen and A.C. Gordon. Property terrain is relatively flat lying and much of the claims area is covered by overburden.

Centered on the Fame claim is an area of bedrock exposure which is located within a major northwest trending gully. This area (the Discovery Zone) is underlain by andesite which is cut by a small body of granodiorite.

Prospecting within the Discovery Zone has partially defined a precious metals target area which to date measures from 100 to 200 metres wide by about 400 metres long. Grab samples of bleached andesite and siliceous, vuggy vein/breccia material have returned anomalous to economically significant values up to 1.02 ounces per ton Au and 5.83 ounces per ton Ag. Prospecting was hindered by the recessive nature of the mineralized zones and by the overburden cover.

The Discovery Zone is located at the intersection of two inferred faults. Within the claim group there is potential for additional mineralized zones in other target areas including one located at the locus of inferred faulting on the adjacent Fortune claim.

This setting of volcanic hosted, epithermal veins and breccias at Fame, is similar to that at Blackdome Mine located 25 kilometres to the southeast. This mine, which commenced production in mid 1986, had start-up reserves estimated at 200,000 tons grading 0.79 ounces per ton Au and 3.76 ounces per ton Ag. Since start-up, mining operations have been highly successful and ongoing exploration has readily replaced depleted original reserves.

The geological similarities of these two properties, plus the widespread occurrences of gold and silver, indicate excellent potential for the discovery of bonanza style, epithermal mineralization similar to the Blackdome multiple vein deposit. An additional possibility is the discovery of "bulk" mineralization amenable to low cost open pit mining.

FAME PROPERTY

CLAIMS STATUS

(as of January 15, 1988)

<u>Claim Name</u>	<u>No. of Units</u>	<u>Record No.</u>	<u>Record Date</u>	<u>Expiry Date</u>
FAME 1	20	2147	Feb. 18, 1987	Feb. 18, 1988 *
FORTUNE 1	20	2489	Dec. 10, 1987	Dec. 10, 1988

* One Year of assessment work will be applied to the FAME 1 claim on or before February 18, 1988.

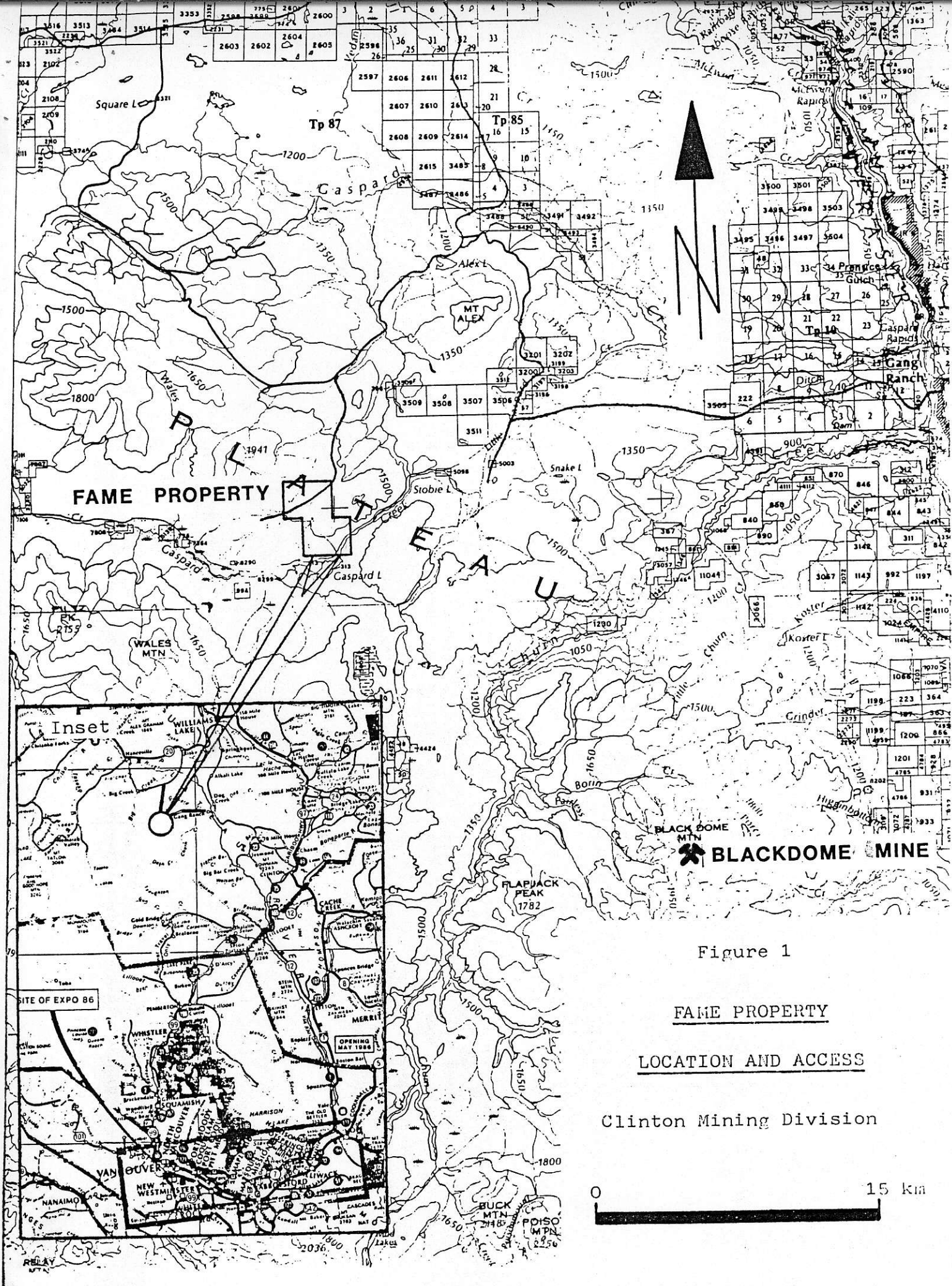


Figure 1

FAME PROPERTY
LOCATION AND ACCESS

Clinton Mining Division



SEDIMENTARY AND VOLCANIC ROCKS

QUATERNARY

PLEISTOCENE AND RECENT

Qal Till, gravel, sand, clay, and silt

TERTIARY

UPPER MIOCENE AND/OR PIOCENE CHILCOTIN GROUP

MPCv Olivine basalt, andesite; minor related tuff and breccia

MPCs Buff to grey siltstone, diatomite, clay and silty sand;
coarse reddish brown conglomerate; minor ash beds and lignite

OLIGOCENE AND (?) LOWER MIOCENE

OMv Grey to brown, fine-grained to porphyritic and amygdaloidal
andesite and basalt tuff, breccia, and flows; includes minor **Ev**

Eocene and younger (?), older (?)

Ev Rhyolitic and dacitic tuff, breccia, and flows; minor andesitic
to basaltic rocks; may include minor **OMv**; includes small areas
of **Ea** along Fraser River

CRETACEOUS

UPPER CRETACEOUS (CENOMANIAN)

KINGSVALE GROUP

uKkv Varicoloured andesitic, dacitic
basaltic pyroclastics; minor flows and
volcanic sediments

uKks Interbedded siltstone, greywacke,
conglomerate

JURASSIC

MIDDLE (BAJOCIAN) AND (?) LOWER JURASSIC

mJv Green porphyritic andesite breccia, tuff
and flows, minor argillaceous tuff

TRIASSIC

UPPER TRIASSIC

uTc (VORIAN) Massive grey limestone; minor pebble
conglomerate, shale

uTsv (KARNIAN AND/OR NORIAN) Interbedded shale, greywacke, andesitic to
basaltic volcanics

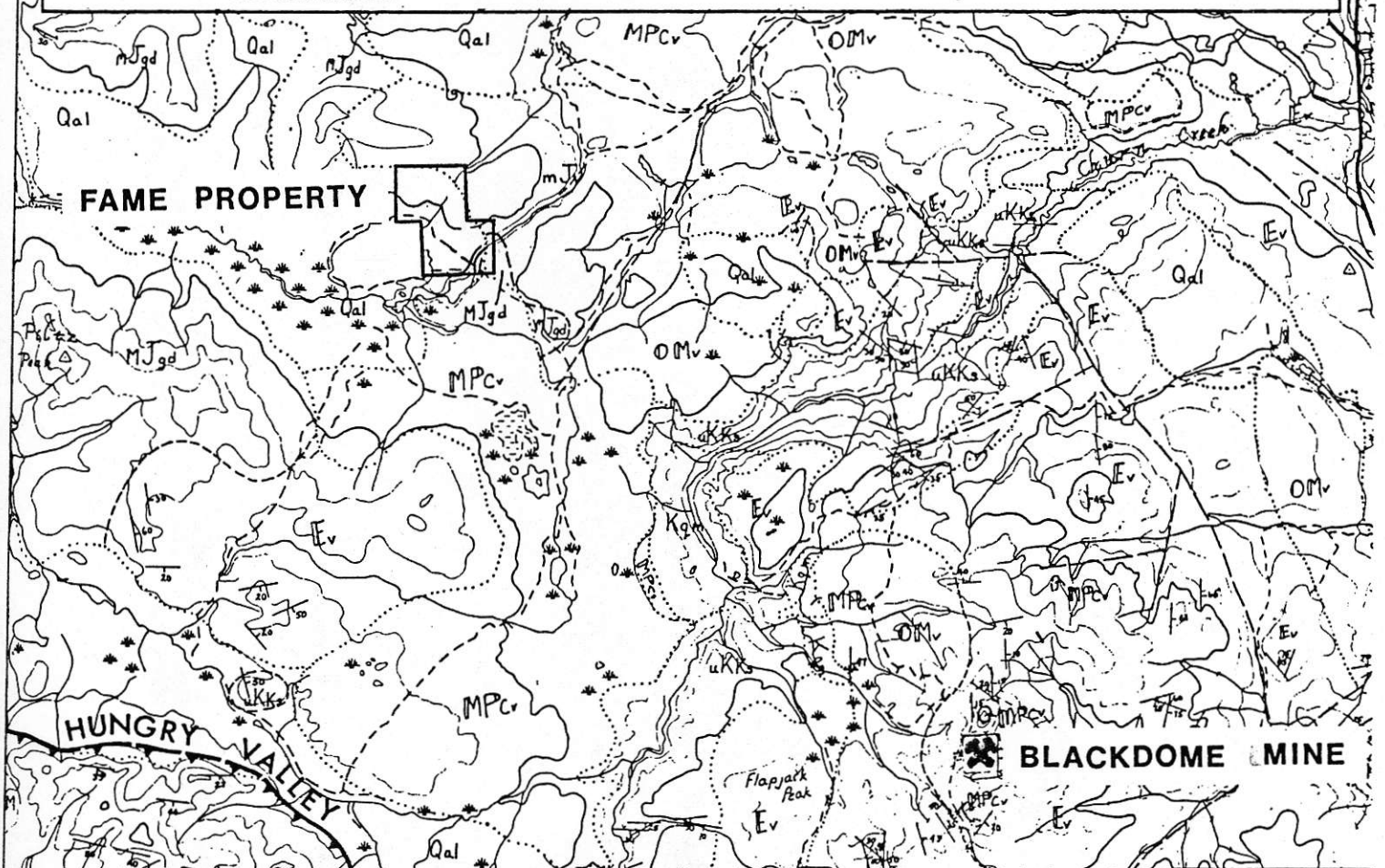


Figure 2

FAME PROPERTY

REGIONAL GEOLOGY

Clinton Mining Division

PLUTONIC ROCKS

CRETACEOUS

LATE CRETACEOUS

Kqm Quartz monzonite; minor granodiorite

JURASSIC

MIDDLE (?) JURASSIC

mJgd Gneissic granodiorite, diorite and quartz diorite

JURASSIC AND/OR OLDER

Jgd Granodiorite, diorite, inclusions of basic volcanic rocks

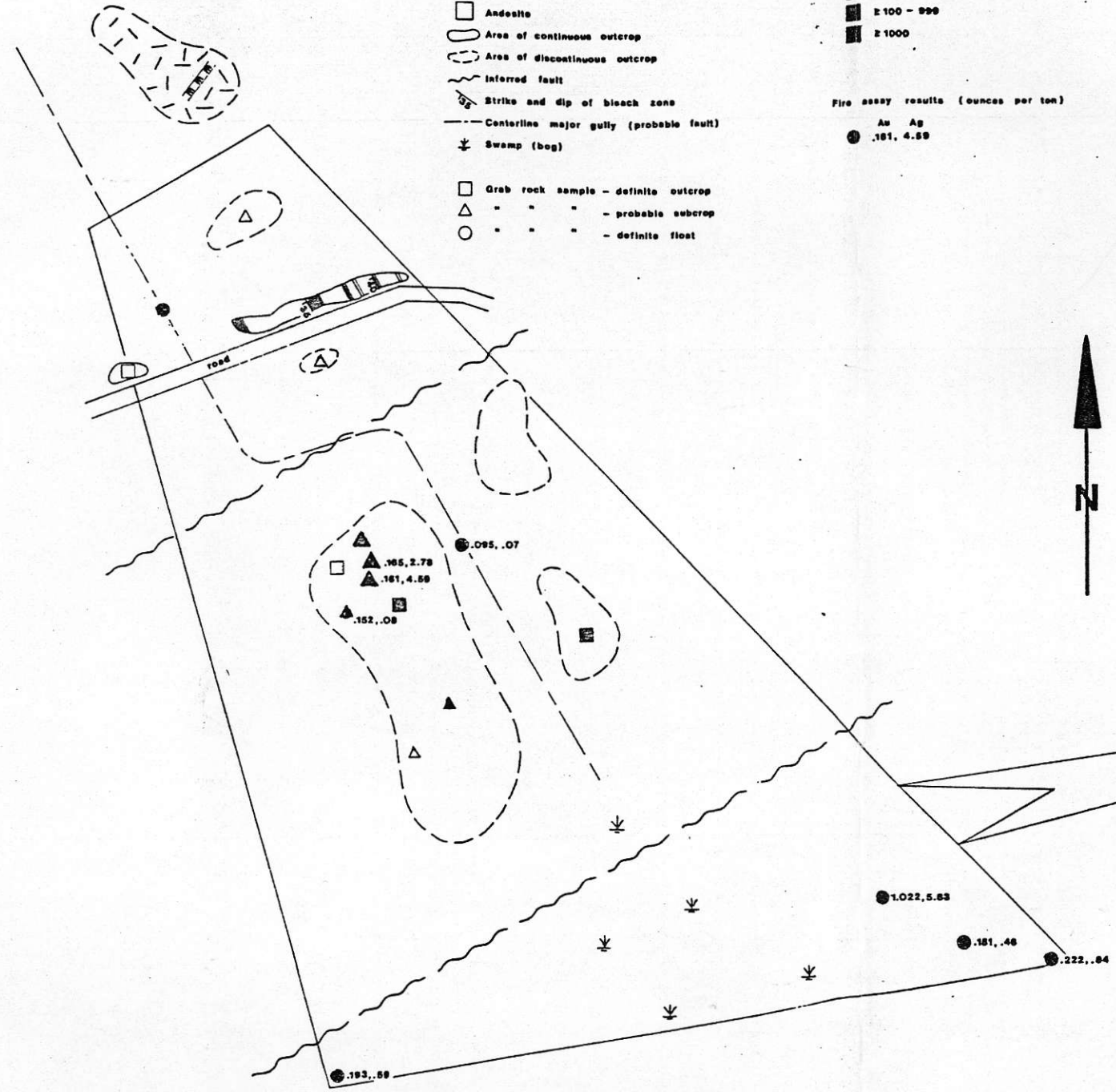


LEGEND

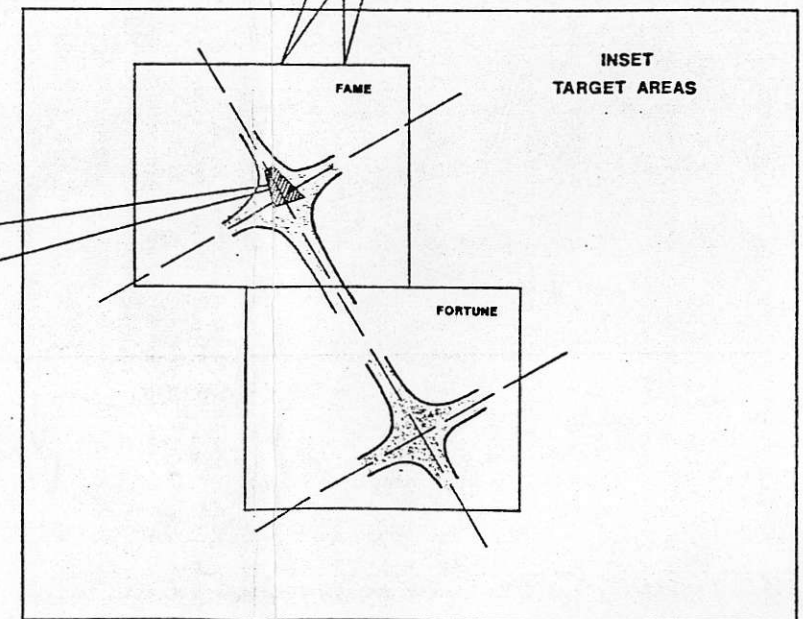
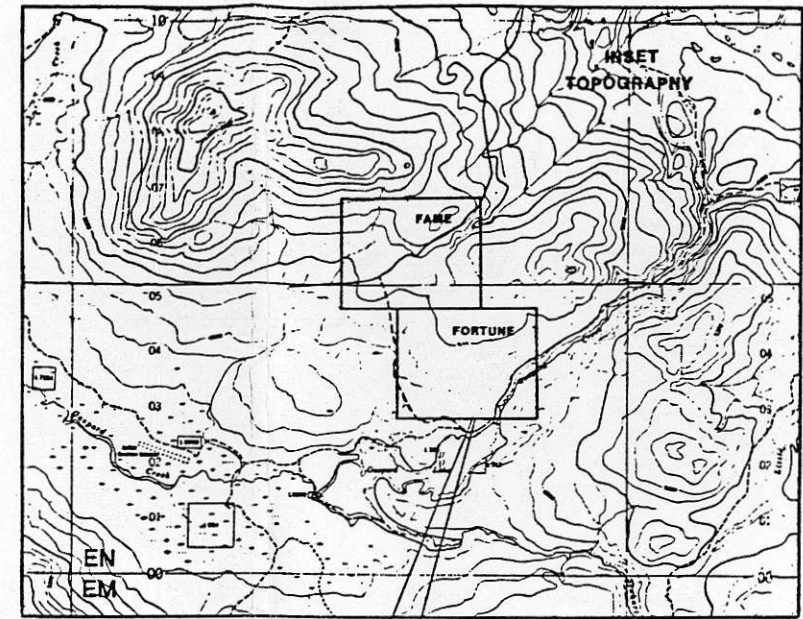
- Mafic dike
- Granodiorite
- Andesite
- Area of continuous outcrop
- Area of discontinuous outcrop
- Inferred fault
- Strike and dip of beach zone
- Centerline major gully (probable fault)
- Swamp (bog)
- Grab rock sample - definite outcrop
- " " " - probable subcrop
- " " " - definite float

- Au geochem colour-coded (ppb)
- 230 - 99
 - 100 - 999
 - 1000

- Fire assay results (ounces per ton)
- Au Ag
 - .181, 4.88



DISCOVERY ZONE



REVISED	FAME PROPERTY	
	DISCOVERY ZONE	
	GEOLOGY AND MINERALIZATION	
PROJ. No.	SURVEY BY: bb & AS	DATE Dec. '87
WT: 820-780	DRAWN BY: bb	SCALE
DWG. No.	3	OFFICE

DISCOVERY ZONE

SCHEMATIC SECTION AB

looking NW

1:7500

A

100 metres

B

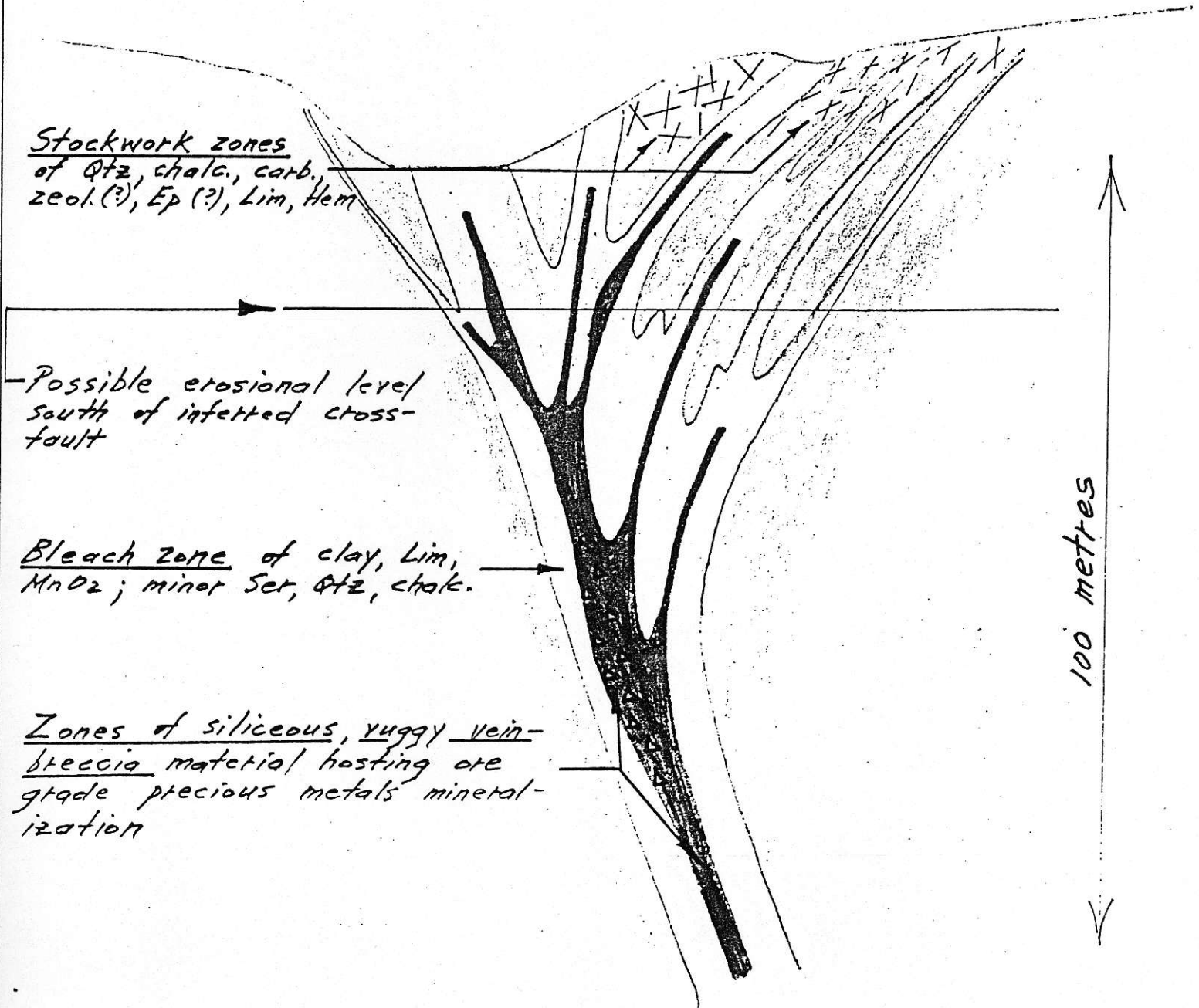
Stockwork zones
of Qtz, chalc., carb.,
zeol. (?), Ep (?), Lim, Hem

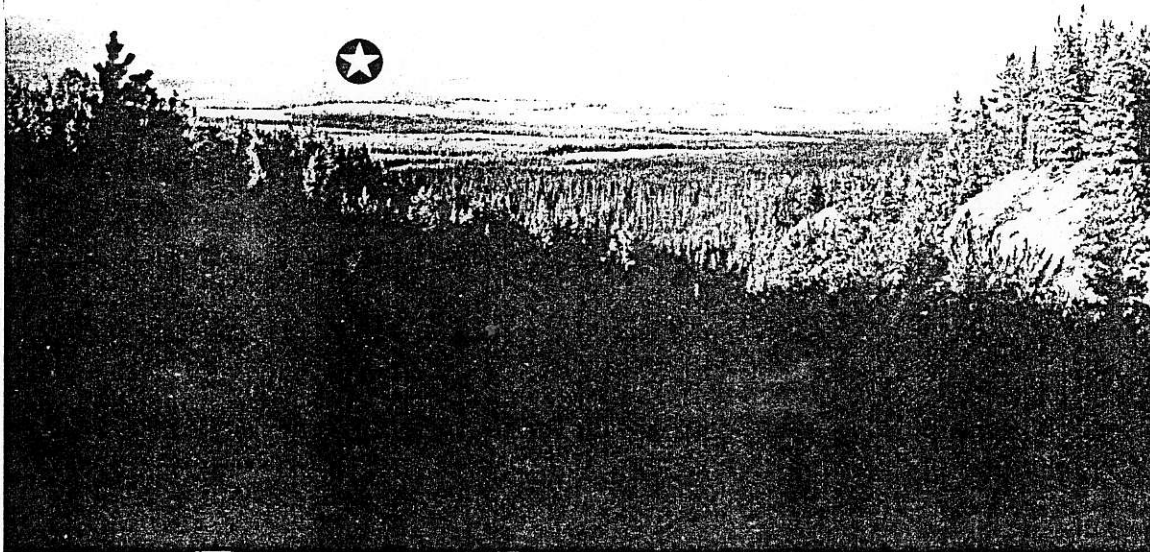
- Possible erosional level
south of inflected cross-
fault

Bleach zone of clay, Lim,
MnO₂; minor Ser, Qtz, chalc.

Zones of siliceous, raggy vein-
breccia material hosting ore
grade precious metals mineral-
ization

100 metres

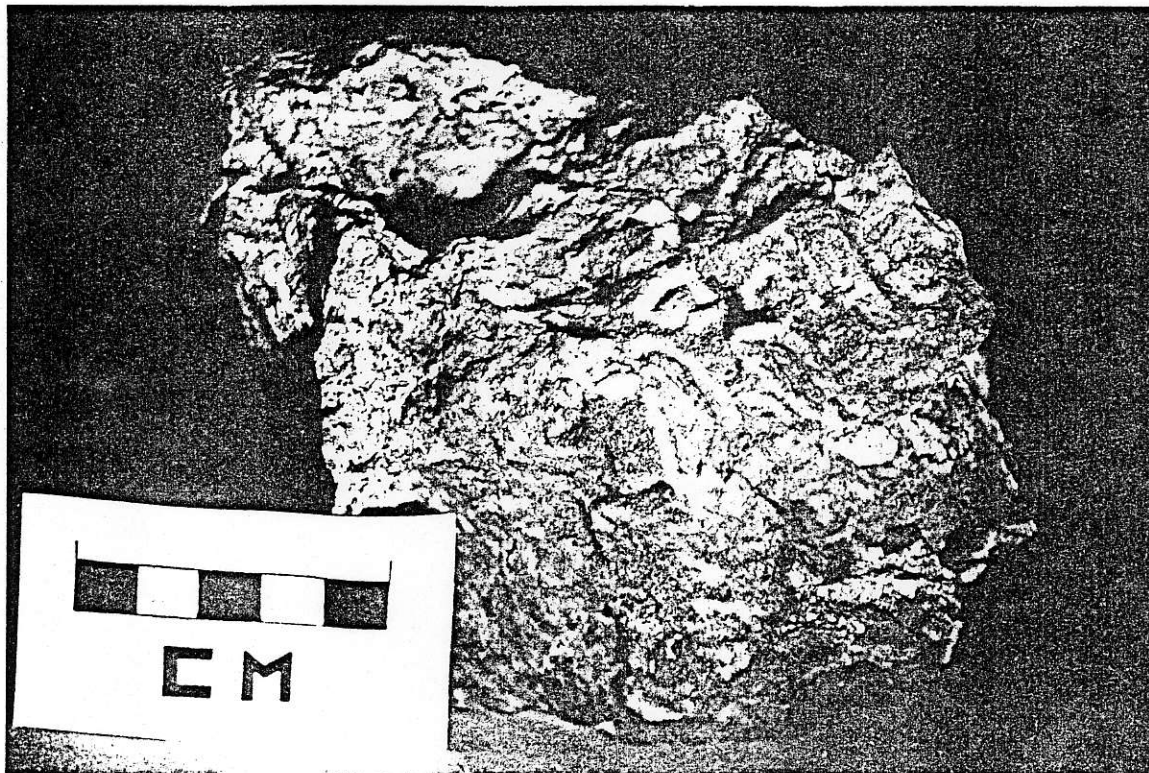




FAME Property Overview looking NE



Discovery Zone



Siliceous, Vuggy Vein/Breccia Material

Grading: 0.161 ounces per ton Au
4.59 ounces per ton Ag

FAME PROPERTY

ROCK GEOCHEMISTRY: CHRONOLOGICAL SUMMARY

ACME ANALYTICAL LABORATORIES LTD.
 852 E. HASTINGS ST. VANCOUVER B.C. V6A 1R6
 PHONE 253-3158 DATA LINE 251-1011

DATE RECEIVED:
 DATE REPORT MAILED:

GEOCHEMICAL ICP ANALYSIS

.500 GRAM SAMPLE IS DIGESTED WITH 3ML 3-1-2 HCL-HNO3-H2O AT 95 DEG. C FOR ONE HOUR AND IS DILUTED TO 10 ML WITH WATER.
 THIS LEACH IS PARTIAL FOR MN.FE.CA.P.CR.MG.BA.TI.B.AL.NA.K.W.SI.ZR.CE.SN.Y.NB AND TA. AU DETECTION LIMIT BY ICP IS 3 PPM.
 - SAMPLE TYPE: ROCK CHIPS AU ANALYSIS BY AA FROM 10 GRAM SAMPLE.

ASSAYER: *D. Toye* DEAN TOYE. CERTIFIED B.C. ASSAYER.

<u>SAMPLE NO.</u>	<u>As</u> <u>PPM</u>	<u>Au*</u> <u>PPB</u>	<u>PERIOD</u>
6DB-063R	642	240	<u>1986 F.A.M.E.</u> Prospecting
6DB-064R	762	290	
6DB-066R	4	1	<u>January 1987</u> FAME Staking
6DB-068R	12	1	
6DB-069R	50	1	
6DB-071R	207	75	
6DB-072R	215	129	
6DB-073R	377	44	
6DB-074R	477	101	
6DB-075R	191	7	
7DB-001R	57	39	<u>October 1987</u> FAME Assessment
7DB-002R	135	38	
7DB-003R	156	265	
7DB-005R	63	645	
7DB-006R	11	1	
7DB-007R	5	1	
7DB-009R	3	1	
7DB-010R	223	355	
7DB-011R	229	64	
7DB-012R	2	1	
7DB-013R	19	28	
7DB-014R	127	395	
7DB-017R	250	41	
7DG-001R	84	5530	
7DG-002R	243	76	
7DG-003R	245	191	
7DB-005R	3	9	
7DG-011R	84	3940	
7DG-012R	58	7190	
7DB-020R	95	3960	<u>November 1987</u>
7DB-021R	91	590	FAME Follow-up and FORTUNE Staking
7DB-022R	85	5430	
7DB-023R	2	22	
7DB-024R	76	38200	
7DB-025R	56	7420	
7DB-026R	130	4560	

Note: Yellow highlighting denotes sample of vuggy, siliceous vein/breccia material.

Blue highlighting denotes sample of bleached andesite.

1986 F.A.M.E. Prospecting,
REC MAY 10 1989

ANALYTICAL LABORATORIES LTD.
E. HASTINGS ST. VANCOUVER B.C. V6A 1R6
JNE 253-3158 DATA LINE 251-1011

DATE RECEIVED: DEC 3 1986

DATE REPORT MAILED: Dec 15/86

GEOCHEMICAL ICP ANALYSIS

.500 GRAM SAMPLE IS DIGESTED WITH 3ML 3-1-2 HCL-HNO3-H2O AT 95 DEG. C FOR ONE HOUR AND IS DILUTED TO 10 ML WITH WATER.
THIS LEACH IS PARTIAL FOR MN.FE.CA.P.CR.MG.BA.TI.B.AL.NA.K.W.SI.ZR.CE.SN.Y.NB AND TA. AU DETECTION LIMIT BY ICP IS 3 PPM.
- SAMPLE TYPE: PULP HG ANALYSIS BY FLAMELESS AA.

ASSAYER: *D. Toyer* DEAN TOYE. CERTIFIED B.C. ASSAYER.

B.K. BOWEN

FILE # 86-2733 R

PAGE 1

SAMPLE#	Cu PPM	Pb PPM	Zn PPM	Ag PPM	As PPM	Sb PPM	Hg PPB	Au PPB
6DB-063R	21	6	80	.9	642	4	60	240
6DB-064R	42	6	49	1.1	762	3	20	290

Jan 1987
FAME Staking

1E ANALYTICAL LABORATORIES LTD.
2 E. HASTINGS ST. VANCOUVER B.C. V6A 1R6
PHONE 253-3158 DATA LINE 251-1011

DATE RECEIVED: FEB 4 1987

DATE REPORT MAILED:

Feb. 9/87...

GEOCHEMICAL ICP ANALYSIS

.500 GRAM SAMPLE IS DIGESTED WITH 3ML 3-1-2 HCL-HNO3-H2O AT 95 DEG. C FOR ONE HOUR AND IS DILUTED TO 10 ML WITH WATER.
THIS LEACH IS PARTIAL FOR MN.FE.CA.P.CR.MG.BA.TI.B.AL.NA.K.W.SI.ZR.CE.SN.Y.NB AND TA. AU DETECTION LIMIT BY ICP IS 3 PPM.
SAMPLE TYPE: ROCK CHIPS AU* ANALYSIS BY AA FROM 10 GRAM SAMPLE.

ASSAYER: *D. Toye* DEAN TOYE. CERTIFIED B.C. ASSAYER.

B.K.BOWEN

FILE # 87-0249

PAGE 1

SAMPLE#	As PPM	Au* PPB
6DB-066R	4	1
6DB-068R	12	1
6DB-069R	50	1
6DB-071R	207	75
6DB-072R	215	129
6DB-073R	377	44
6DB-074R	477	101
6DB-075R	191	7
STD C/AU-S	40	47

NORANDA EXPLORATION COMPANY, LIMITED

N.T.S. 920/70 & 7000

PROPERTY FAME (BLACKJACK MINE AREA)

DATE SEP 3/87

SAMPLE REPORT

SAMPLE NO.	LOCATION & DESCRIPTION	TYPE	WIDTH	AS AG.		-ASSAYS- CHEMISTRY				SAMPLED BY	
				Ag	As						
B-0688	Plg - chalcidary ult. stockwork - vuggy. Some calcite present, lim. minor to locally mod. Hom. locally in grain.	GRAB	N/A	4	1						B.S.B.
B-0689	Stockwork mining. Pred. gangue mineral is pale gr in colour & fairly siliceous. Also grey carb.? minor white (?) & minor chalc. Some ult. contain diss'd lim. often Py? Blobs Hom in host rx conspicuous. Host rx. is v. f. gr'd dk. grey calc. rx (poss. fragment!?)	GRAB	N/A	12	1						B.S.B.
B-0690	Pyroclastic → tabilli frags Gen. rusty weathered surface, lim ± minor. on broken surface, looks a little bleached & is somewhat siliceous. Not part. veined, but typical gangue (w/ v. minor chalc. + carb.?) w/ Py? → lim. mod. locally occurring as blobs. No. & minor sphin.	GRAB	N/A	50	1						B.S.B.

NORANDA EXPLORATION COMPANY, LIMITED

PROPERTY FPM E (BLACKBERRY KIN ANSA)

N.T.S. 920/700 2 1000

DATE FEB. 3/87.

SAMPLE REPORT

2
3

SAMPLE NO.	LOCATION & DESCRIPTION	TYPE	WIDTH	AS		ASSAYS	GRAVITY				SAMPLED BY
				AS	AS						
GAB-0712	Uolo. tx. Pass. thin $\frac{1}{2}$ text. str. lim - MnO ₂ . Bleached \rightarrow (clay w/ minor silts + sp [?]). Pass. v. much vuggy text. Minor veining present \rightarrow carb. chalc. ult. (shows open spaced filling).	GRAB	N/A	207	75						BFB
GAB-0722	Coarsey thin slip 2-6" wide. Some silt - chalc. ult. mat. included. (\pm vugs locally) containing minor lim. after Py ^(?) . Wall - tx. bleached (mainly clay) abundant lim - MnO ₂ coating surfaces. Also lim. after Py ^(?) .	GRAB	N/A	215	129						BFB
GAB-0732	Narrow (2") slip - mainly clay - lim. w/ chalc. ult. noted in - re frag. Much coat. + lim. on weathered surface and lim. after Py ^(?) locally.	GRAB	N/A	377	44						BFB

GEOCHEMICAL ICP ANALYSIS

.500 GRAM SAMPLE IS DIGESTED WITH 3ML 3-1-2 HCL-HNO3-H2O AT 95 DEG. C FOR ONE HOUR AND IS DILUTED TO 10 ML WITH WATER.
 THIS LEACH IS PARTIAL FOR MN, FE, CA, P, CR, MG, BA, TI, B, AL, NA, K, W, SI, ZR, CE, SN, Y, NB AND TA. AU DETECTION LIMIT BY ICP IS 3 PPM.
 - SAMPLE TYPE: PULP

DATE RECEIVED: NOV 20 1987 DATE REPORT MAILED: *Nov 26/87* ASSAYER: *D. J. J.* DEAN TOYE. CERTIFIED B.C. ASSAYER.

B.K. BOWEN FILE #87-0249R

PAGE 1

SAMPLE#	Mo PPM	Cu PPM	Pb PPM	Zn PPM	Ag PPM	Ni PPM	Co PPM	Mn PPM	Fe %	As PPM	U PPM	Au PPM	Th PPM	Sr PPM	Cd PPM	Sb PPM	Bi PPM	V PPM	Ca %	P %	La PPM	Cr PPM	Mg %	Ba PPM	Ti %	B PPM	Al %	Na %	K %	W PPM
6DB-072R	1	70	8	76	.3	16	12	401	2.49	215	5	ND	1	101	1	2	2	43	.72	.081	11	9	.79	70	.06	15	1.57	.02	.08	1
6DB-074R	1	4	7	35	.6	6	5	235	2.52	477	5	ND	1	28	1	2	4	23	.16	.050	2	2	.44	51	.01	19	.78	.02	.12	1

JAN '87

FABE STAKING.

*- 30 ELEMENT ICP OF
BLEACHED ANDESITES*

ACME ANALYTICAL LABORATORIES LTD.
852 E. HASTINGS ST. VANCOUVER B.C. V6A 1R6
PHONE (604) 253-3158 FAX (604) 253-1716

DATE RECEIVED: OCT 7 1987

DATE REPORT MAILED: *Oct. 20/87.*

GEOCHEMICAL ANALYSIS CERTIFICATE

ICP - .500 GRAM SAMPLE IS DIGESTED WITH 3ML 3-1-2 HCL-HNO3-H2O AT 95 DEC. C FOR ONE HOUR AND IS DILUTED TO 10 ML WITH WATER.
THIS LEACH IS PARTIAL FOR MN FE CA P LA CR MG BA TI B W AND LIMITED FOR NA K AND AL. AU DETECTION LIMIT BY ICP IS 3 PPM.
- SAMPLE TYPE: P1-SOIL P2-ROCK AU* ANALYSIS BY AA FROM 10 GRAM SAMPLE.

ASSAYER: *D. Toye* DEAN TOYE, CERTIFIED B.C. ASSAYER

B.K. BOWEN File # 87-4788 Page 1

SAMPLE#	AS PPM	AU* PPB
7DB-0155	56	39
7DB-0165	4	2
7DG-0075	6	1
7DG-0085	32	1
7DG-0105	75	1
STD C/AU-S	41	52

OCT '87

FAHE

ASSESSMENT

Soil sample test sites.

SAMPLE#	AS PPM	AU* PPB		
7DB-001R	57	39		
7DB-002R	135	38		
7DB-003R	156	265		
7DB-005R	63	645		
7DB-006R	11	1		
7DB-007R	5	1		
7DB-009R	3	1		
7DB-010R	223	355		
7DB-011R	229	64		
7DB-012R	2	1		
7DB-013R	19	28		
7DB-014R	127	395		
7DB-017R	250	41		
7DB-018R	5	126		
7DB-019R	6	1		
7DG-001R	84	5530	.161	.165, 2.78
7DG-002R	243	76		
7DG-003R	245	191		
7DG-005R	3	9		
7DG-011R	84	3940	.114	.152, .08
7DG-012R	58	7190	.210	.123, .59
STD C/AU-R	38	485		

OCT '87

FAHE

Assessment.

ROCK SAMPLES.

GEOCHEMICAL ANALYSIS CERTIFICATE

ICP - .500 GRAM SAMPLE IS DIGESTED WITH 3ML 3-1-2 HCL-HNO₃-H₂O AT 95 DEC. C FOR ONE HOUR AND IS DILUTED TO 10 ML WITH WATER.
THIS LEACH IS PARTIAL FOR MN FE CA P LA CR MG BA TI B W AND LIMITED FOR NA K AND AL. AU DETECTION LIMIT BY ICP IS 3 PPM.
- SAMPLE TYPE: Pulp

DATE RECEIVED: NOV 20 1987

DATE REPORT MAILED:

Nov 27/87

ASSAYER: *D. Toyne* DEAN TOYE, CERTIFIED B.C. ASSAYER

B.K. BOWEN File # 87-4788 R

SAMPLE#	MO	CU	PB	ZN	AG	NI	CO	MN	FE	AS	U	AU	TH	SR	CD	SB	BI	V	CA	P	LA	CR	MG	BA	TI	B	AL	NA	K	W
	PPM	PPM	PPM	PPM	PPM	PPM	PPM	PPM	%	PPM	PPM	PPM	PPM	PPM	PPM	PPM	PPM	PPM	%	%	PPM	PPM	%	PPM	%	PPM	%	%	%	PPM
706-001R	149	18	57	20	96.5	2	2	80	1.15	84	5	ND	1	7	1	10	4	8	.05	.013	5	4	.07	16	.01	2	.27	.01	.07	1
706-011R	33	13	45	16	3.2	3	2	111	1.23	84	5	ND	1	4	1	2	2	9	.06	.018	5	2	.13	16	.01	2	.35	.02	.10	1
706-012R	39	28	137	49	24.8	6	3	295	1.05	58	5	9	2	20	2	10	2	17	.05	.016	2	7	.11	179	.01	6	.44	.01	.13	1

OCT '87

PARK ASSESSMENT

30 ELEMENT ICP OF
SILICEOUS VEIN/BRECCIA MATERIAL

ACME ANALYTICAL LABORATORIES LTD.
852 E. HASTINGS ST. VANCOUVER B.C. V6A 1R6
PHONE (604) 253-3158 FAX (604) 253-1716

DATE RECEIVED: DEC 16 1987

DATE REPORT MAILED: *Jan. 6, 1988...*

ASSAY CERTIFICATE

- SAMPLE TYPE: Pulp
AU** AND AG** BY FIRE ASSAY FROM 1/2 A.T.

ASSAYER: *B.K. Bowen* DEAN TOYE, CERTIFIED B.C. ASSAYER

B.K. BOWEN File # 87-4788R

SAMPLE#	AG** OZ/T	AU** OZ/T
7DG-001R	2.78	.165
7DG-011R	.08	.152
7DG-012R	.59	.193

OCT 1 87.

FIRE

ASSESSMENT

FIRE ASSAYS

ANALYTICAL LABORATORIES LTD.
E. HASTINGS ST. VANCOUVER B.C. V6A 1R6
PHONE (604) 253-3158 FAX (604) 253-1716

DATE RECEIVED: NOV 9 1987

NOV 24 1987

GEOCHEMICAL ANALYSIS CERTIFICATE

ICP - .500 GRAM SAMPLE IS DIGESTED WITH 3ML 3-1-2 HCL-HNO3-H2O AT 95 DEC. C FOR ONE HOUR AND IS DILUTED TO 10 ML WITH WATER.
THIS LEACH IS PARTIAL FOR MN FE CA P LA CR MG BA TI B W AND LIMITED FOR NA K AND AL. AU DETECTION LIMIT BY ICP IS 3 PPM.
- SAMPLE TYPE: Rock Chips AU* ANALYSIS BY AA FROM 10 GRAM SAMPLE.

ASSAYER: *D. Toye* DEAN TOYE, CERTIFIED B.C. ASSAYER

B.K. BOWEN File # 87-5524

SAMPLE#	AS PPM	AU* PPB
7DB-020R	95	3960
7DB-021R	91	590
7DB-022R	85	5430

NOVEMBER '87
same follow-up

ANALYTICAL LABORATORIES LTD.
32 E. HASTINGS ST. VANCOUVER B.C. V6A 1R6
PHONE (604) 253-3158 FAX (604) 253-1716

DATE RECEIVED: NOV 23 1987

DATE REPORT MAILED: *Dec. 8/87...*

ASSAY CERTIFICATE

- SAMPLE TYPE: Rock Chips
AU** AND AG** BY FIRE ASSAY FROM 1/2 A.T.

ASSAYER: *D. Toye* DEAN TOYE, CERTIFIED B.C. ASSAYER

B.K. BOWEN File # 87-5524

SAMPLE#	AG** OZ/T	AU** OZ/T
7DB-020R	.07	.095
7DB-021R	.01	.013
7DB-022R	4.59	.161

NOVEMBER 187

KINE FOLLOW-UP.

- KINE ASSAYS.

ACME ANALYTICAL LABORATORIES LTD.

DATE RECEIVED: DEC 2 1987

852 E. HASTINGS ST. VANCOUVER B.C. V6A 1R6

PHONE (604) 253-3158

FAX (604) 253-1716

DATE REPORT MAILED:

Dec. 4/87...

GEOCHEMICAL ANALYSIS CERTIFICATE

ICP - .500 GRAM SAMPLE IS DIGESTED WITH 3ML 3-1-2 HCL-HNO3-H2O AT 95 DEC. C FOR ONE HOUR AND IS DILUTED TO 10 ML WITH WATER. THIS LEACH IS PARTIAL FOR MN FE CA P LA CR MB BA TI B W AND LIMITED FOR NA K AND AL. AU DETECTION LIMIT BY ICP IS 3 PPM.

- SAMPLE TYPE: Rock Chips AU* ANALYSIS BY AA FROM 10 GRAM SAMPLE.

ASSAYER: *D. Toye*. DEAN TOYE, CERTIFIED B.C. ASSAYER

B.K. BOWEN File # 87-5971

SAMPLE#	AS PPM	AU* PPB			
7DB-023R	2	22			
7DB-024R	76	38200	1.114	1.022	5.57
7DB-025R	56	7420	.215	.272	.34
7DB-026R	130	4560	.455	.151	.46

NOVENBER '87

PLEASE FOLLOW-UP.

ACME ANALYTICAL LABORATORIES LTD.
852 E. HASTINGS ST. VANCOUVER B.C. V6A 1R6
PHONE (604) 253-3158 FAX (604) 253-1716

DATE RECEIVED: DEC 16 1987

DATE REPORT MAILED: JAN. 6, 1988.

ASSAY CERTIFICATE

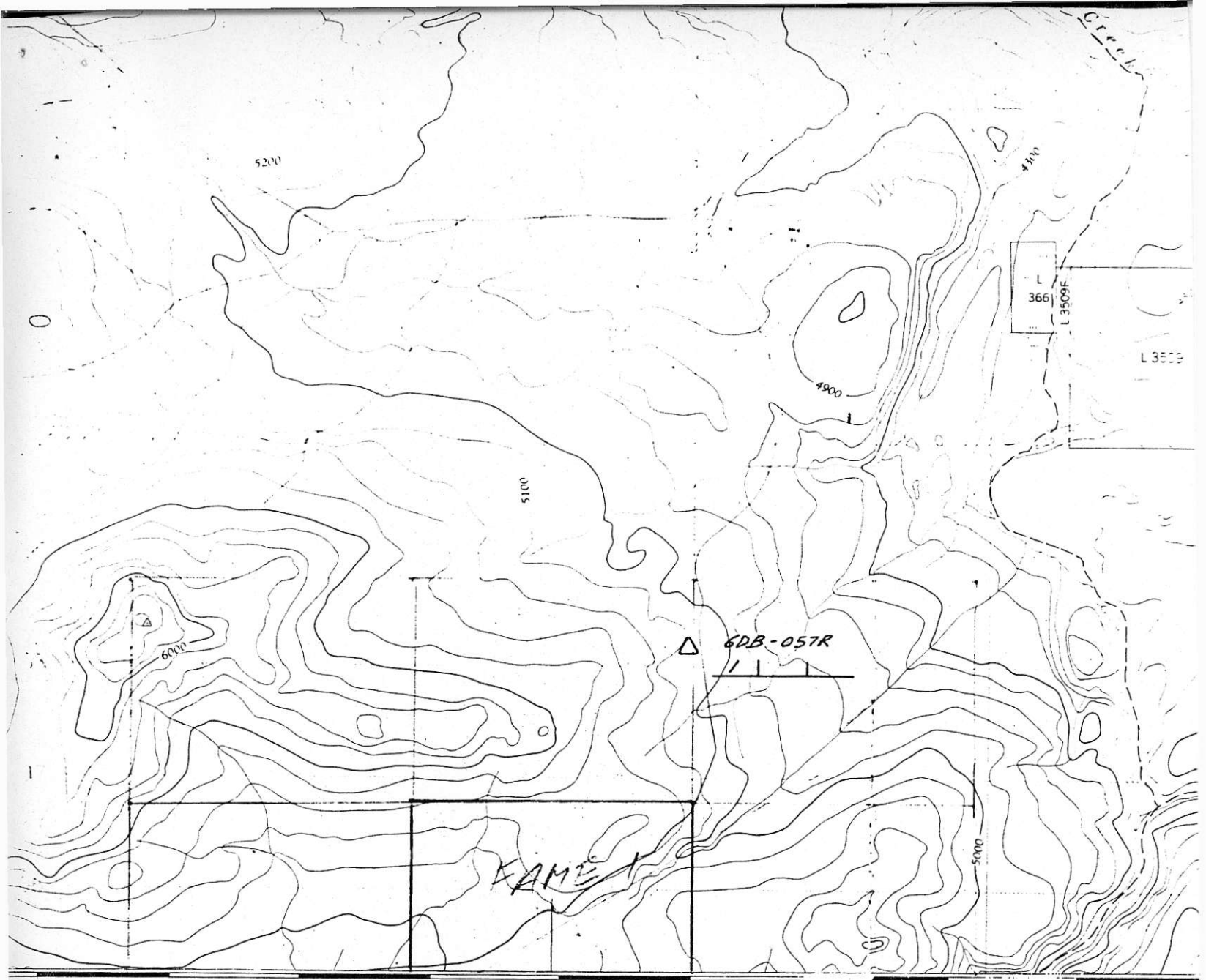
- SAMPLE TYPE: Pulp
AU** AND AG** BY FIRE ASSAY FROM 1/2 A.T.

ASSAYER: *B.K. Bowen* DEAN TOYE, CERTIFIED B.C. ASSAYER

B.K. BOWEN File # 87-5971R

SAMPLE#	AG** OZ/T	AU** OZ/T
7DB-024R	5.83	1.022
7DB-025R	.84	.222
7DB-026R	.46	.151

NOVEMBER 187
KANE BLOW-UP.
FIRE ASSAYS.

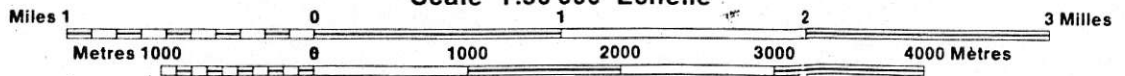


MOUNT

LILLOOET LAND

BRITISH COLUMBIA COLOMBIE-BRITANNIQUE

Scale 1:50 000 Échelle



Information can be obtained from

Metres

Feet

less than 2 lanes
moins de 2 voies

DES SIGNES, VOIR AU VERSO

Canada

Riske Creek 76 km

50'

45'

GDB-061R

GDB-063R

GDB-062R

GDB-064R

240 | 642 | 60 | .9 | 4 | 21 | 6 | 80

290 | 762 | 20 | 1.1 | 3 | 42 | 6 | 49

Fortune

Gaspard

Creek

L 8290

L 313

L 313

Gaspard

Lake

L 8299

L 994

7910 59

L 5004

GDB-058R

T
R
A
S
M
E
R
I
N

