

Harvey Tremblay
HY Tech Drilling
c/o Pine Resources

October 24, 1995

Via Fax

RE: Drilling Program on Sibola Property for Westly Technologies Limited

Dear Mr. Tremblay:

The following are the general specifications for the drill program we are proposing to carry out on the Sibola property located south of Houston, B.C.

Location: about 20 km north of the Huckleberry deposit (Princeton Mining); 70 km SW of Houston, B.C.

Access: via the main Tahtsa Reach logging road to Twinkle Lake (101K), then 6 km west along the Sibola Main logging road (Houston Forest Product) then a further 2½ km west along Berg mining road; from this point old drill roads (HBOG, 1975) provide access to the drill sites; the old drill roads are partly overgrown with sections of blow down but otherwise are in good condition with no washouts.

Footage: 2000 ft NQ in three holes.

Specifications: depth: max 1000 ft.
 min 400 ft.
 angle: -60° to 90°

Distance to water: two possible source which are shown on drill location sketch map; both are accessible by the old drill roads; distance to water varies from less than 200' for hole #2 to 1800' (straight line) for hole #3.

Start Date: Nov. 20/95 on or about.

Road Conditions: main Tahtsa road will be maintained by Northwood through the winter; we will try to make arrangements with the grader operator maintaining the Tahtsa road to open up and main-

G. BELIK AND ASSOCIATES
Consulting Geologist

2.

tain the Sibola Main as far as the Berg road; the drill contractor will be expected to provide a small dozer to maintain the last section of road and move the drill from site to site.

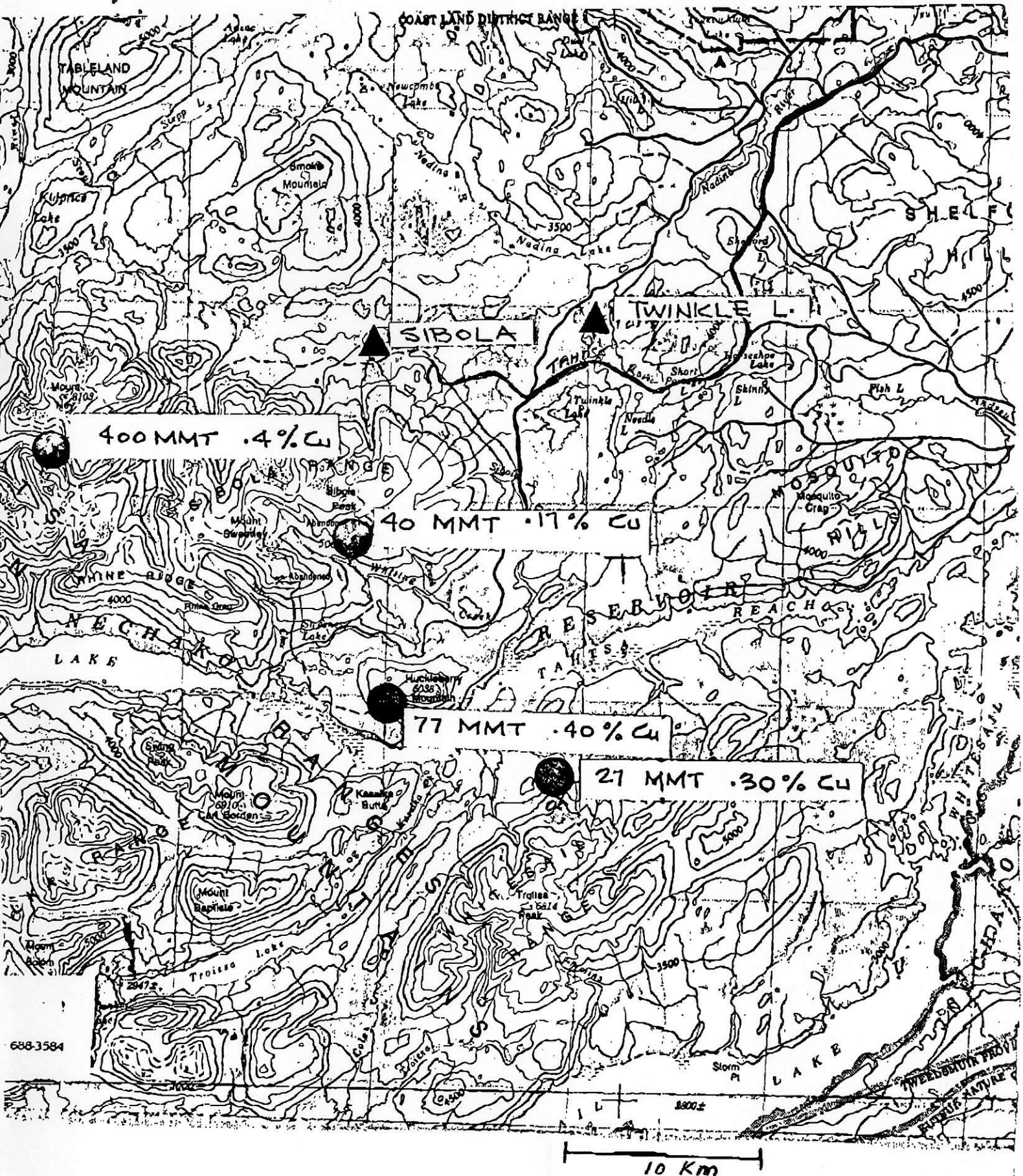
Accommodation: the drill contractor will be expected to provide his own accommodation; there is no camp on the property nor is there nearby accommodation; the travel time to Houston is about 2 hrs, one way.

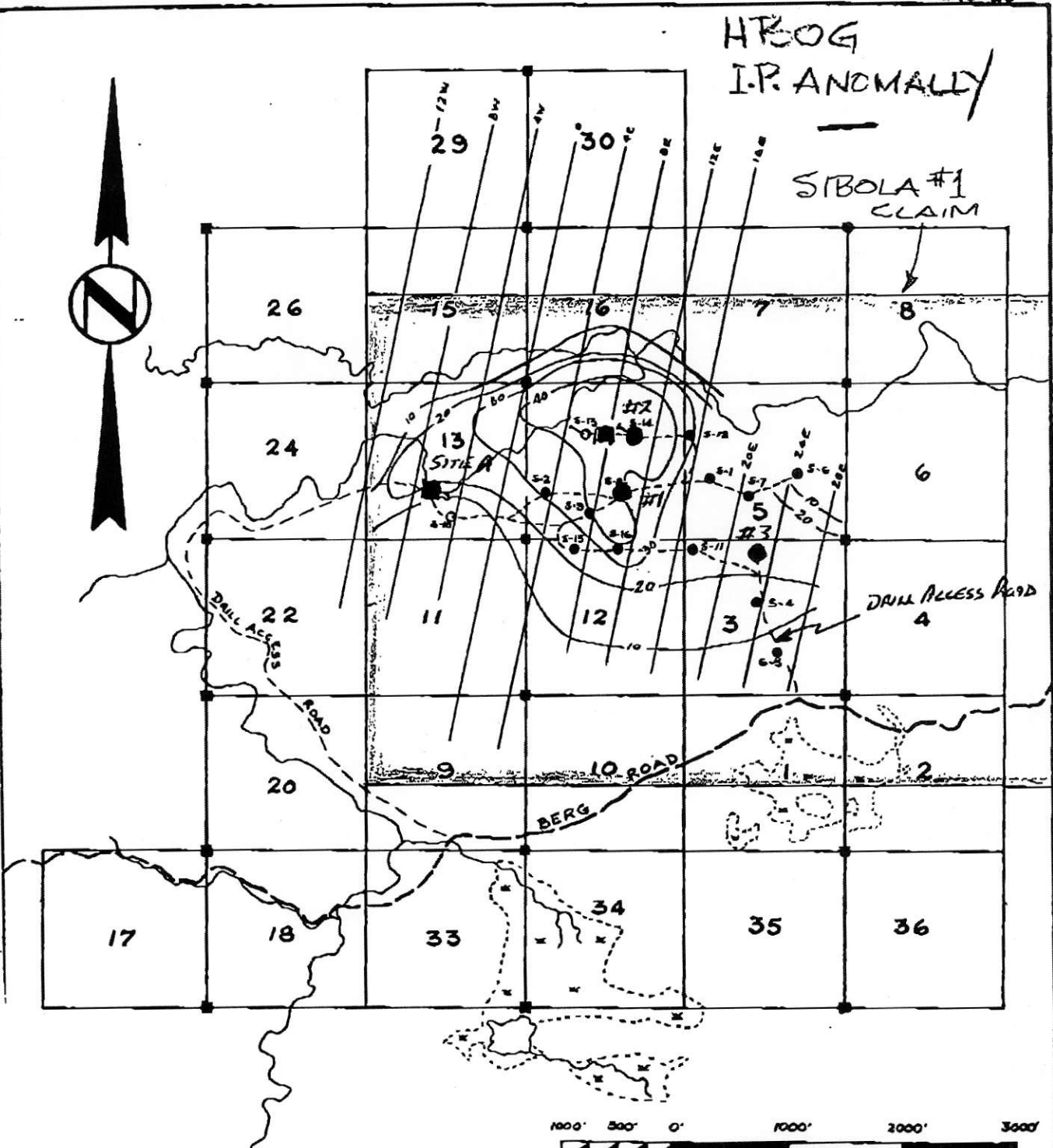
We look forward to receiving your proposal for the completion of this project. If you have any questions do not hesitate to call or fax me at (604) 376 8351.

Yours truly,



G.D. Belik





- S-2 Vertical percussion drill hole
- Claim post
- Chargeability contour in mv/volt
- ||| Flagged grid for I.P. survey
- S-10 Vertical percussion drill hole in overburden
- Drill access road
- Proposed diamond drill hole (#1 to #3)
- WATER SOURCE



Hudson's Bay Oil and Gas Company Limited
 MINERALS EXPLORATION
 VANCOUVER BRITISH COLUMBIA

TAHTSA PROJECT
 SYLVIA CLAIMS

INDUCED POLARIZATION
 CHARGEABILITY CONTOUR MAP

MAP	DATE	BY	SCALE	N.T.S.
Fig. 15	Nov. '75	JMS-B	1" = 1/4 mile	93E/14

to accompany 1978 Budget Proposal -
 N.C.A.L.