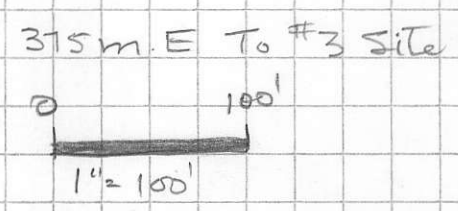
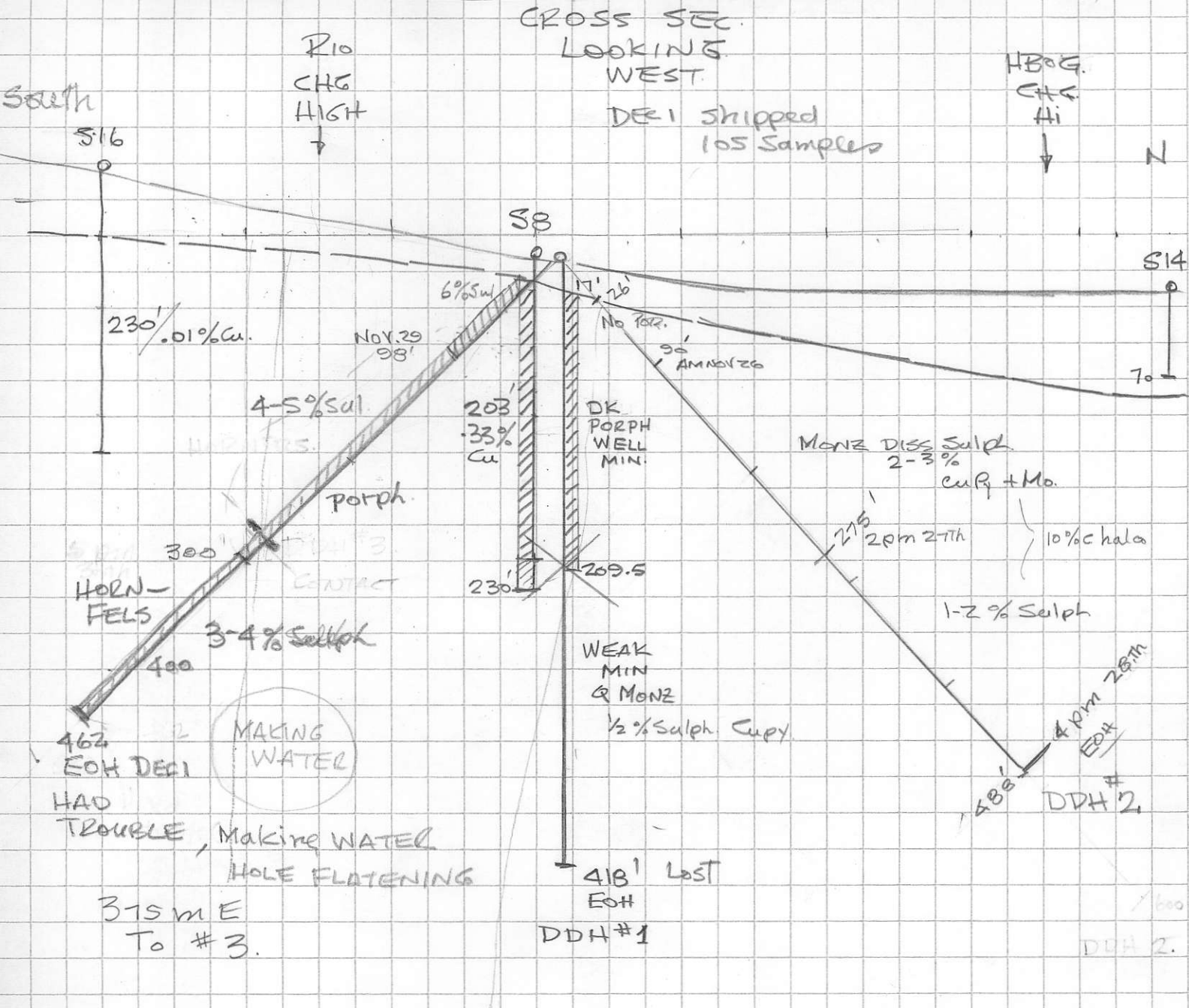


# SIBOLA DRILLING PROGRESS

NOV 21/95



TOTAL	418
	488
	300
	<hr/>
	1206

MANY FRACS II CA in No 1

Houston Motor Inn.  
604-845-7112

SITE FOR #4 156m E started Dec 1  
NEAR S1, DRILL S TOWARD S11

MOTOR INN.

Nov 24/95

- Houston ~~Hotel~~ - 845-7112

- WFLY - 689-3923

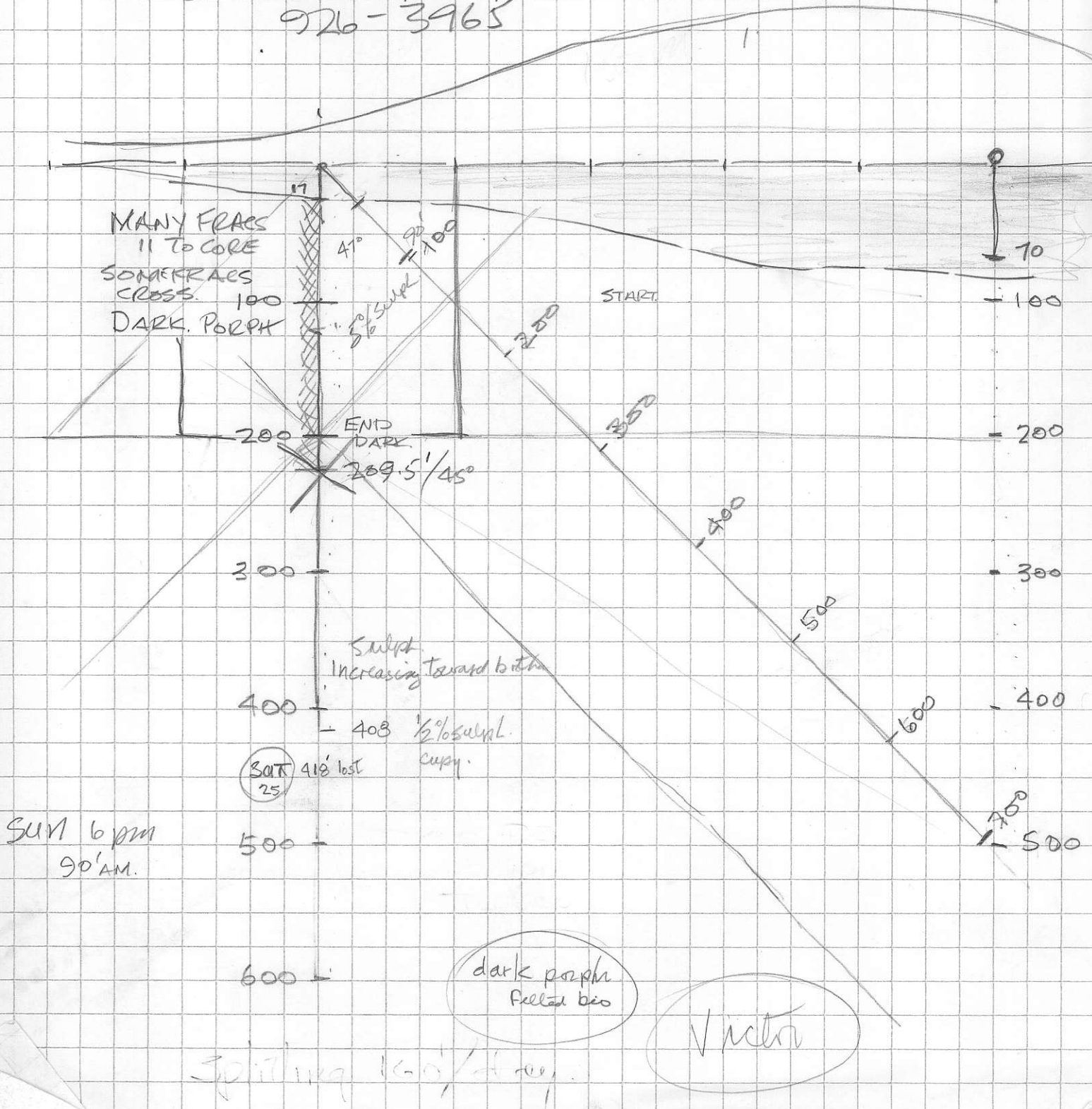
604-818-9830

- JTL 688-3584

- LINDA - 626-3489

Splitting 150'/day

Alvin J. 601-1337  
926-3965



KENNOCORE RESOURCES LTD  
TAHTSA LAKE  
PORPHYRY COPPER DISTRICT  
LOCATION MAP.

1:250,000 SCALE

