

FEB.

680334

Glen Huck
93K/Endaco
E3

GENE
Huck

(17 UNIT CLAIM.)

- 700M NW OF PIT.
- DRILLED TO BOUNDARY. No ALL The way
- GLEN & GENE Sampled Corelog
- Boundary dispute
- Drill PROGRAMME THIS SUMMER
- ASSESSMENT. one June 99.

- DRILLED A FEW HOLES. OTHERSIDE
- MINERALIZED ZC 500' from boundary.
- ON Fault
- ~~ENDACO~~ Q. Monz. one side
Volcanics on other.

~~200/97~~ 15-20 parts/annually/2 background

~~250/97~~
~~97/97~~
~~55/98~~

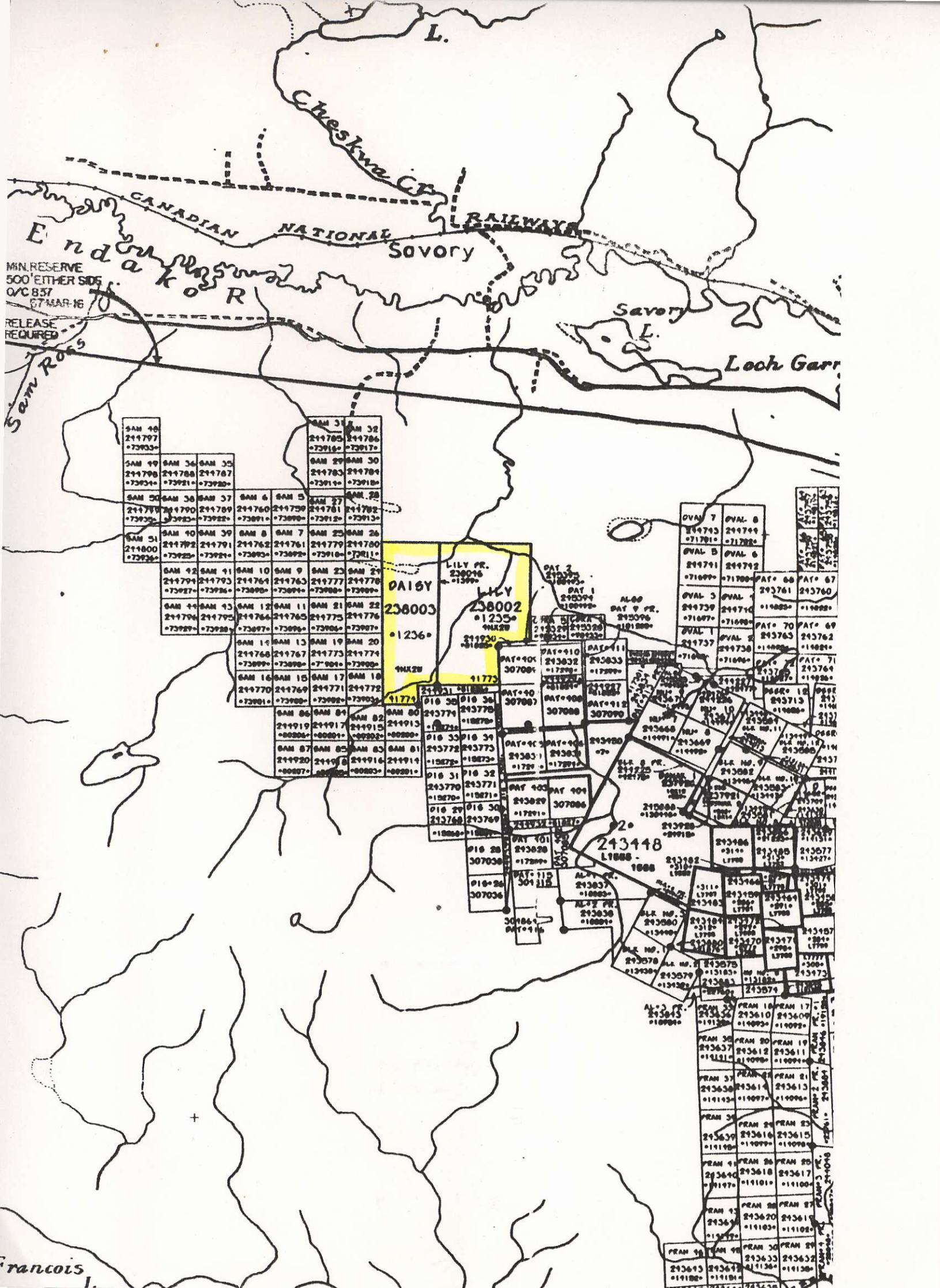
2684 - DEWDNEY Ave
Victoria
UBR 3M4

GENE Huck

VICTORIA 250-598-1632

MEETING MAR 4/97
34 HOLES DRILLED!

~~150~~
~~15~~
~~10~~
~~235~~



L.

Cheskwat
Savory

CANADIAN NATIONAL RAILWAY

Endako R.

Savory

Loch Garr

MIN. RESERVE
500' EITHER SIDE
OVC 857
67 MAR 16

RELEASE
REQUIRED

Sam Rds

SAM 48 211797 73933	SAM 31 211785 72916		SAM 32 211786 73917	
SAM 49 211798 73934	SAM 36 211788 73921	SAM 35 211787 73920	SAM 29 211783 73918	SAM 30 211784 73919
SAM 50 211799 73935	SAM 38 211790 73923	SAM 37 211789 73922	SAM 6 211760 73899	SAM 5 211759 73898
SAM 51 211800 73936	SAM 40 211792 73924	SAM 39 211791 73925	SAM 8 211762 73895	SAM 7 211761 73894
SAM 42 211794 73927	SAM 41 211793 73926	SAM 10 211764 73897	SAM 9 211763 73896	SAM 23 211777 73900
SAM 44 211796 73929	SAM 43 211795 73928	SAM 12 211766 73899	SAM 11 211765 73898	SAM 21 211775 73902
SAM 14 211768 73899	SAM 13 211767 73898	SAM 19 211773 73902	SAM 20 211774 73901	SAM 16 211770 73901
SAM 18 211774 73901	SAM 15 211769 73900	SAM 17 211771 73902	SAM 18 211772 73903	SAM 86 211919 00006
SAM 87 211920 00007	SAM 84 211917 00009	SAM 82 211915 00008	SAM 80 211913 00007	SAM 81 211914 00006

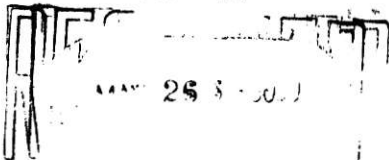
PAIBY
238003
1236

LILY
238002
1235

1172

PAT 2 24330 18895	PAT 1 24329 18894	AL-60 24328 18893	PAT 9 PR. 24327 18892	AL-60 24326 18891	PAT 110 24325 18890	PAT 111 24324 18889	PAT 90 24323 18888	PAT 90 24322 18887	PAT 90 24321 18886
PAT 10 24320 18885	PAT 10 24319 18884	PAT 10 24318 18883	PAT 10 24317 18882	PAT 10 24316 18881	PAT 10 24315 18880	PAT 10 24314 18879	PAT 10 24313 18878	PAT 10 24312 18877	PAT 10 24311 18876
PAT 10 24310 18875	PAT 10 24309 18874	PAT 10 24308 18873	PAT 10 24307 18872	PAT 10 24306 18871	PAT 10 24305 18870	PAT 10 24304 18869	PAT 10 24303 18868	PAT 10 24302 18867	PAT 10 24301 18866
PAT 10 24300 18865	PAT 10 24299 18864	PAT 10 24298 18863	PAT 10 24297 18862	PAT 10 24296 18861	PAT 10 24295 18860	PAT 10 24294 18859	PAT 10 24293 18858	PAT 10 24292 18857	PAT 10 24291 18856
PAT 10 24290 18855	PAT 10 24289 18854	PAT 10 24288 18853	PAT 10 24287 18852	PAT 10 24286 18851	PAT 10 24285 18850	PAT 10 24284 18849	PAT 10 24283 18848	PAT 10 24282 18847	PAT 10 24281 18846
PAT 10 24280 18845	PAT 10 24279 18844	PAT 10 24278 18843	PAT 10 24277 18842	PAT 10 24276 18841	PAT 10 24275 18840	PAT 10 24274 18839	PAT 10 24273 18838	PAT 10 24272 18837	PAT 10 24271 18836
PAT 10 24270 18835	PAT 10 24269 18834	PAT 10 24268 18833	PAT 10 24267 18832	PAT 10 24266 18831	PAT 10 24265 18830	PAT 10 24264 18829	PAT 10 24263 18828	PAT 10 24262 18827	PAT 10 24261 18826
PAT 10 24260 18825	PAT 10 24259 18824	PAT 10 24258 18823	PAT 10 24257 18822	PAT 10 24256 18821	PAT 10 24255 18820	PAT 10 24254 18819	PAT 10 24253 18818	PAT 10 24252 18817	PAT 10 24251 18816
PAT 10 24250 18815	PAT 10 24249 18814	PAT 10 24248 18813	PAT 10 24247 18812	PAT 10 24246 18811	PAT 10 24245 18810	PAT 10 24244 18809	PAT 10 24243 18808	PAT 10 24242 18807	PAT 10 24241 18806
PAT 10 24240 18805	PAT 10 24239 18804	PAT 10 24238 18803	PAT 10 24237 18802	PAT 10 24236 18801	PAT 10 24235 18800	PAT 10 24234 18799	PAT 10 24233 18798	PAT 10 24232 18797	PAT 10 24231 18796
PAT 10 24230 18795	PAT 10 24229 18794	PAT 10 24228 18793	PAT 10 24227 18792	PAT 10 24226 18791	PAT 10 24225 18790	PAT 10 24224 18789	PAT 10 24223 18788	PAT 10 24222 18787	PAT 10 24221 18786
PAT 10 24220 18785	PAT 10 24219 18784	PAT 10 24218 18783	PAT 10 24217 18782	PAT 10 24216 18781	PAT 10 24215 18780	PAT 10 24214 18779	PAT 10 24213 18778	PAT 10 24212 18777	PAT 10 24211 18776
PAT 10 24210 18775	PAT 10 24209 18774	PAT 10 24208 18773	PAT 10 24207 18772	PAT 10 24206 18771	PAT 10 24205 18770	PAT 10 24204 18769	PAT 10 24203 18768	PAT 10 24202 18767	PAT 10 24201 18766
PAT 10 24200 18765	PAT 10 24199 18764	PAT 10 24198 18763	PAT 10 24197 18762	PAT 10 24196 18761	PAT 10 24195 18760	PAT 10 24194 18759	PAT 10 24193 18758	PAT 10 24192 18757	PAT 10 24191 18756
PAT 10 24190 18755	PAT 10 24189 18754	PAT 10 24188 18753	PAT 10 24187 18752	PAT 10 24186 18751	PAT 10 24185 18750	PAT 10 24184 18749	PAT 10 24183 18748	PAT 10 24182 18747	PAT 10 24181 18746
PAT 10 24180 18745	PAT 10 24179 18744	PAT 10 24178 18743	PAT 10 24177 18742	PAT 10 24176 18741	PAT 10 24175 18740	PAT 10 24174 18739	PAT 10 24173 18738	PAT 10 24172 18737	PAT 10 24171 18736
PAT 10 24170 18735	PAT 10 24169 18734	PAT 10 24168 18733	PAT 10 24167 18732	PAT 10 24166 18731	PAT 10 24165 18730	PAT 10 24164 18729	PAT 10 24163 18728	PAT 10 24162 18727	PAT 10 24161 18726
PAT 10 24160 18725	PAT 10 24159 18724	PAT 10 24158 18723	PAT 10 24157 18722	PAT 10 24156 18721	PAT 10 24155 18720	PAT 10 24154 18719	PAT 10 24153 18718	PAT 10 24152 18717	PAT 10 24151 18716
PAT 10 24150 18715	PAT 10 24149 18714	PAT 10 24148 18713	PAT 10 24147 18712	PAT 10 24146 18711	PAT 10 24145 18710	PAT 10 24144 18709	PAT 10 24143 18708	PAT 10 24142 18707	PAT 10 24141 18706
PAT 10 24140 18705	PAT 10 24139 18704	PAT 10 24138 18703	PAT 10 24137 18702	PAT 10 24136 18701	PAT 10 24135 18700	PAT 10 24134 18699	PAT 10 24133 18698	PAT 10 24132 18697	PAT 10 24131 18696
PAT 10 24130 18695	PAT 10 24129 18694	PAT 10 24128 18693	PAT 10 24127 18692	PAT 10 24126 18691	PAT 10 24125 18690	PAT 10 24124 18689	PAT 10 24123 18688	PAT 10 24122 18687	PAT 10 24121 18686
PAT 10 24120 18685	PAT 10 24119 18684	PAT 10 24118 18683	PAT 10 24117 18682	PAT 10 24116 18681	PAT 10 24115 18680	PAT 10 24114 18679	PAT 10 24113 18678	PAT 10 24112 18677	PAT 10 24111 18676
PAT 10 24110 18675	PAT 10 24109 18674	PAT 10 24108 18673	PAT 10 24107 18672	PAT 10 24106 18671	PAT 10 24105 18670	PAT 10 24104 18669	PAT 10 24103 18668	PAT 10 24102 18667	PAT 10 24101 18666
PAT 10 24100 18665	PAT 10 24099 18664	PAT 10 24098 18663	PAT 10 24097 18662	PAT 10 24096 18661	PAT 10 24095 18660	PAT 10 24094 18659	PAT 10 24093 18658	PAT 10 24092 18657	PAT 10 24091 18656
PAT 10 24090 18655	PAT 10 24089 18654	PAT 10 24088 18653	PAT 10 24087 18652	PAT 10 24086 18651	PAT 10 24085 18650	PAT 10 24084 18649	PAT 10 24083 18648	PAT 10 24082 18647	PAT 10 24081 18646
PAT 10 24080 18645	PAT 10 24079 18644	PAT 10 24078 18643	PAT 10 24077 18642	PAT 10 24076 18641	PAT 10 24075 18640	PAT 10 24074 18639	PAT 10 24073 18638	PAT 10 24072 18637	PAT 10 24071 18636
PAT 10 24070 18635	PAT 10 24069 18634	PAT 10 24068 18633	PAT 10 24067 18632	PAT 10 24066 18631	PAT 10 24065 18630	PAT 10 24064 18629	PAT 10 24063 18628	PAT 10 24062 18627	PAT 10 24061 18626
PAT 10 24060 18625	PAT 10 24059 18624	PAT 10 24058 18623	PAT 10 24057 18622	PAT 10 24056 18621	PAT 10 24055 18620	PAT 10 24054 18619	PAT 10 24053 18618	PAT 10 24052 18617	PAT 10 24051 18616
PAT 10 24050 18615	PAT 10 24049 18614	PAT 10 24048 18613	PAT 10 24047 18612	PAT 10 24046 18611	PAT 10 24045 18610	PAT 10 24044 18609	PAT 10 24043 18608	PAT 10 24042 18607	PAT 10 24041 18606
PAT 10 24040 18605	PAT 10 24039 18604	PAT 10 24038 18603	PAT 10 24037 18602	PAT 10 24036 18601	PAT 10 24035 18600	PAT 10 24034 18599	PAT 10 24033 18598	PAT 10 24032 18597	PAT 10 24031 18596
PAT 10 24030 18595	PAT 10 24029 18594	PAT 10 24028 18593	PAT 10 24027 18592	PAT 10 24026 18591	PAT 10 24025 18590	PAT 10 24024 18589	PAT 10 24023 18588	PAT 10 24022 18587	PAT 10 24021 18586
PAT 10 24020 18585	PAT 10 24019 18584	PAT 10 24018 18583	PAT 10 24017 18582	PAT 10 24016 18581	PAT 10 24015 18580	PAT 10 24014 18579	PAT 10 24013 18578	PAT 10 24012 18577	PAT 10 24011 18576
PAT 10 24010 18575	PAT 10 24009 18574	PAT 10 24008 18573	PAT 10 24007 18572	PAT 10 24006 18571	PAT 10 24005 18570	PAT 10 24004 18569	PAT 10 24003 18568	PAT 10 24002 18567	PAT 10 24001 18566
PAT 10 24000 18565	PAT 10 23999 18564	PAT 10 23998 18563	PAT 10 23997 18562	PAT 10 23996 18561	PAT 10 23995 18560	PAT 10 23994 18559	PAT 10 23993 18558	PAT 10 23992 18557	PAT 10 23991 18556
PAT 10 23990 18555	PAT 10 23989 18554	PAT 10 23988 18553	PAT 10 23987 18552	PAT 10 23986 18551	PAT 10 23985 18550	PAT 10 23984 18549	PAT 10 23983 18548	PAT 10 23982 18547	PAT 10 23981 18546
PAT 10 23980 18545	PAT 10 23979 18544	PAT 10 23978 18543	PAT 10 23977 18542	PAT 10 23976 18541	PAT 10 23975 18540	PAT 10 23974 18539	PAT 10 23973 18538	PAT 10 23972 18537	PAT 10 23971 18536
PAT 10 23970 18535	PAT 10 23969 18534	PAT 10 23968 18533	PAT 10 23967 18532	PAT 10 23966 18531	PAT 10 23965 18530	PAT 10 23964 18529	PAT 10 23963 18528	PAT 10 23962 18527	PAT 10 23961 18526
PAT 10 23960 18525	PAT 10 23959 18524	PAT 10 23958 18523	PAT 10 23957 18522	PAT 10 23956 18521	PAT 10 23955 18520	PAT 10 23954 18519	PAT 10 23953 18518	PAT 10 23952 18517	PAT 10 23951 18516
PAT 10 23950 18515	PAT 10 23949 18514	PAT 10 23948 18513	PAT 10 23947 18512	PAT 10 23946 18511	PAT 10 23945 18510	PAT 10 23944 18509	PAT 10 23943 18508	PAT 10 23942 18507	PAT 10 23941 18506
PAT 10 23940 18505	PAT 10 23939 18504	PAT 10 23938 18503	PAT 10 23937 18502	PAT 10 23936 18501	PAT 10 23935 18500	PAT 10 23934 18499	PAT 10 23933 18498	PAT 10 23932 18497	PAT 10 23931 18496
PAT 10 23930 18495	PAT 10 23929 18494	PAT 10 23928 18493	PAT 10 23927 18492	PAT 10 23926 18491	PAT 10 23925 18490	PAT 10 23924 18489	PAT 10 23923 18488	PAT 10 23922 18487	PAT 10 23921 18486
PAT 10 23920 18485	PAT 10 23919 18484	PAT 10 23918 18483	PAT 10 23917 18482	PAT 10 23916 18481	PAT 10 23915 18480	PAT 10 23914 18479	PAT 10 23913 18478	PAT 10 23912 18477	PAT 10 23911 18476
PAT 10 23910 18475	PAT 10 23909 18474	PAT 10 23908 18473	PAT 10 23907 18472	PAT 10 23906 18471	PAT 10 23905 18470	PAT 10 23904 18469	PAT 10 23903 18468	PAT 10 23902 18467	PAT 10 23901 18466
PAT 1									

AMAXX



VANCOUVER OFFICE

Report on Percussion Drilling Program - 1978
Lily and Daisy Claims
Omenica Mining Division

NTS: 93K/3E Lat. 54° 04' Long. 125° 10'

Gene P. Huck ; Owner
Granges Exploration Aktiebolag : Operater
(on behalf of Scandinavian Syndicate)

By H.H. Shear, P. Eng.

November 23, 1978

21 Percussion Holes.
4300'

GRID Pattern over
MOST OF CLAIM.

Report on Percussion Drilling Program - March, 1979

Lily, Daisy, and Lily Fr. Claims

Omineca Mining Division

NTS: 93K/3E Lat. 54 04' Long. 125 10'

Gene P. Huck: Owner

Granges Exploration Aktiebolag: Operater

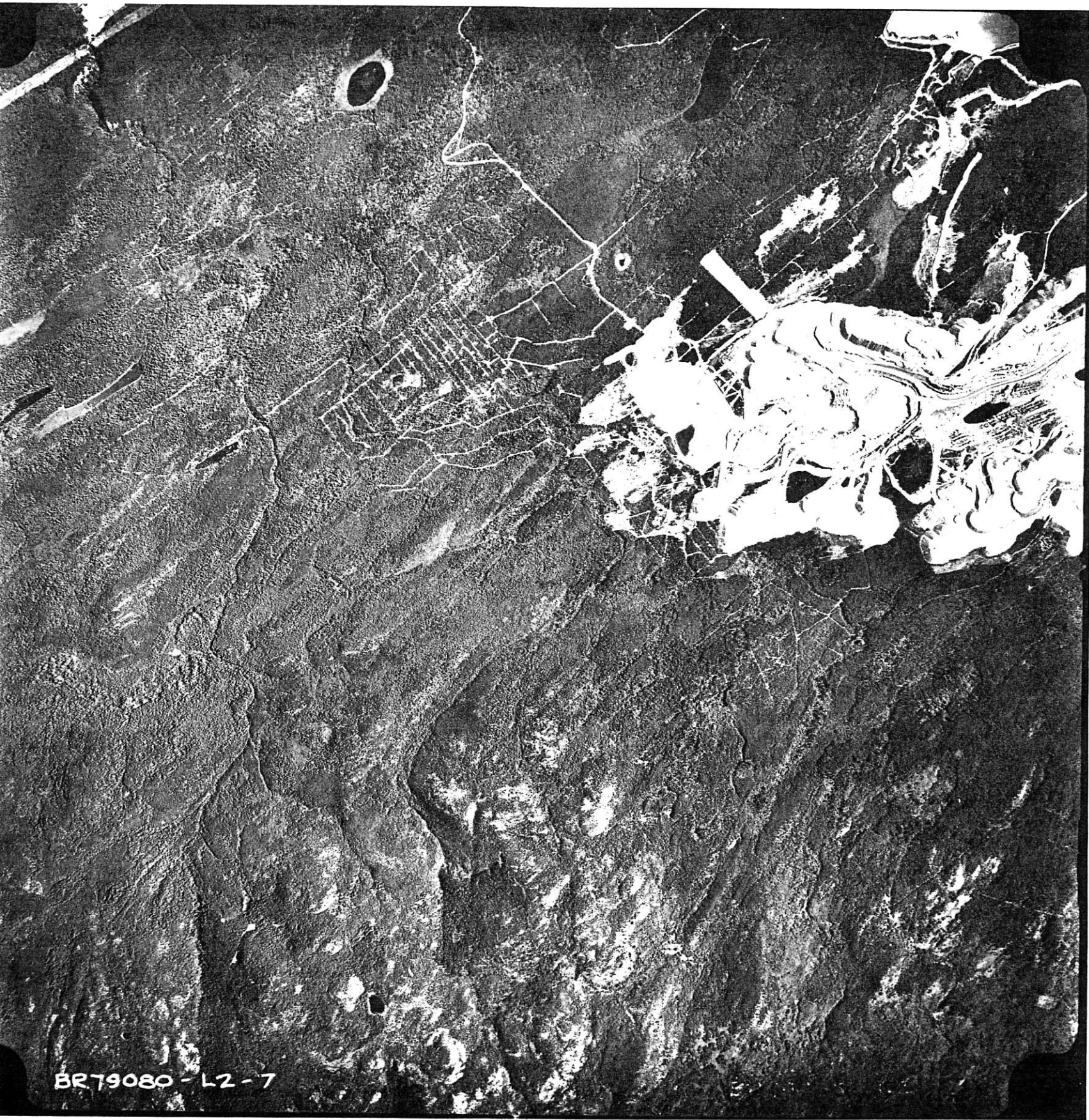
(on behalf of Scandinavian Minerals Syndicate)

By H.H. Shear, P. Eng.

April 6, 1979

13 Percussion Holes
2600'

Follow up

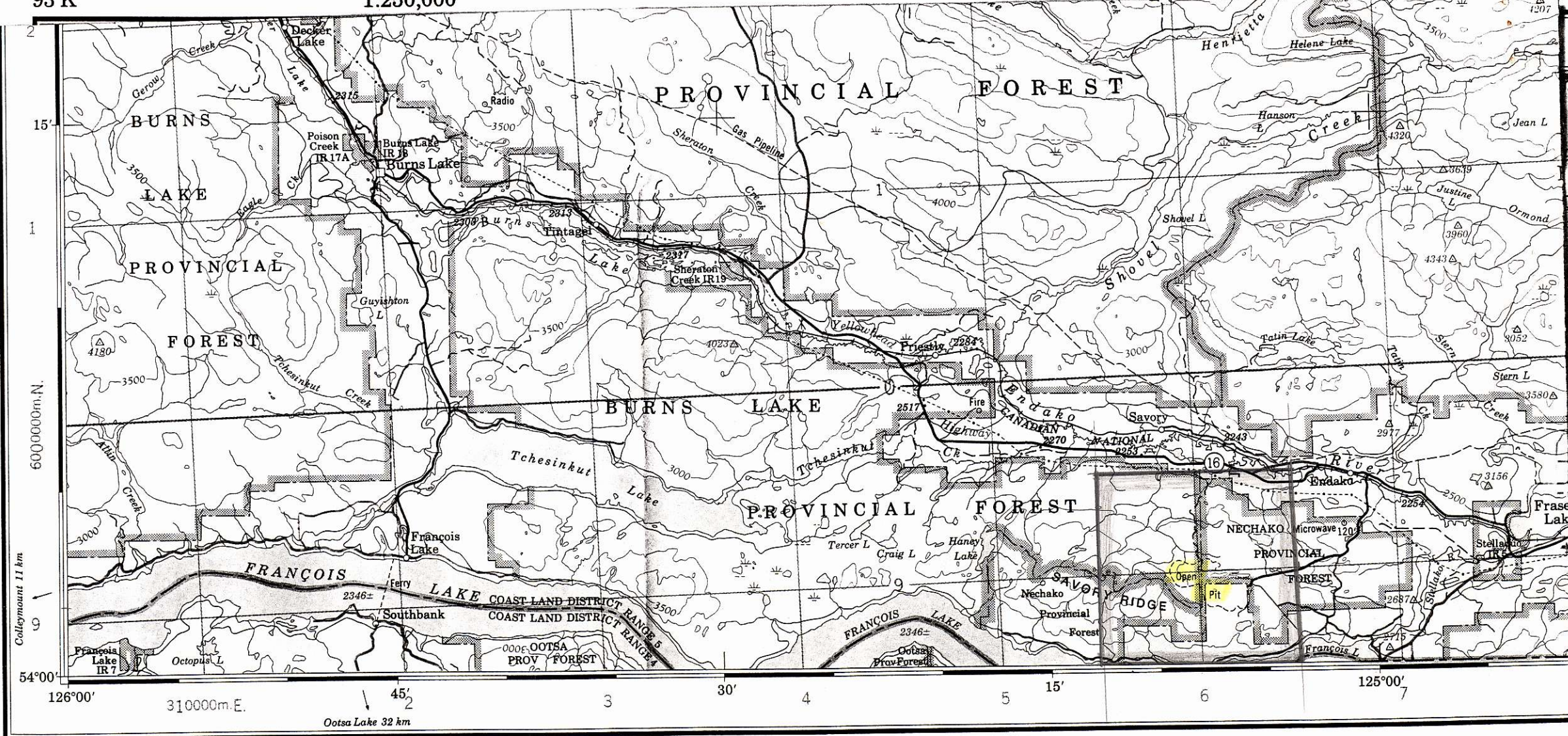


BR79080-L2-7

93 K

1:250,000

CANADA



Produced by the SURVEYS AND MAPPING BRANCH,
 DEPARTMENT OF ENERGY, MINES AND RESOURCES.
 Derived from 1:50,000 maps. Informations current as shown in
 diagram.

Copies may be obtained from the Canada Map Office,
 Department of Energy, Mines and Resources, Ottawa,
 or your nearest map dealer.

© 1979. Her Majesty the Queen in Right of Canada.
 Department of Energy, Mines and Resources.

125° 08'
 CENTRE 54° 02'
 10 K Square

FORT FRASER

BRITISH COLUMBIA

1976

Roads:	Routes:	dual highway	more than 2 lanes
hard surface, all weather	pavée, toute saison	2 chaussées séparées	plus de 2 voies
		2 lanes	less than 2 lanes
hard surface, all weather	pavée, toute saison	2 voies	moins de 2 voies
		2 lanes or more	less than 2 lanes

