

Ron Buckley

680180
Jim Smith Lake
82 G/SW

2 Holes Jim Smith Lake.

1967 - 300' each.

Has low banded pyrite

Why are we drilling there

LOT 297

Red

JIM GROUP 82 G/SW

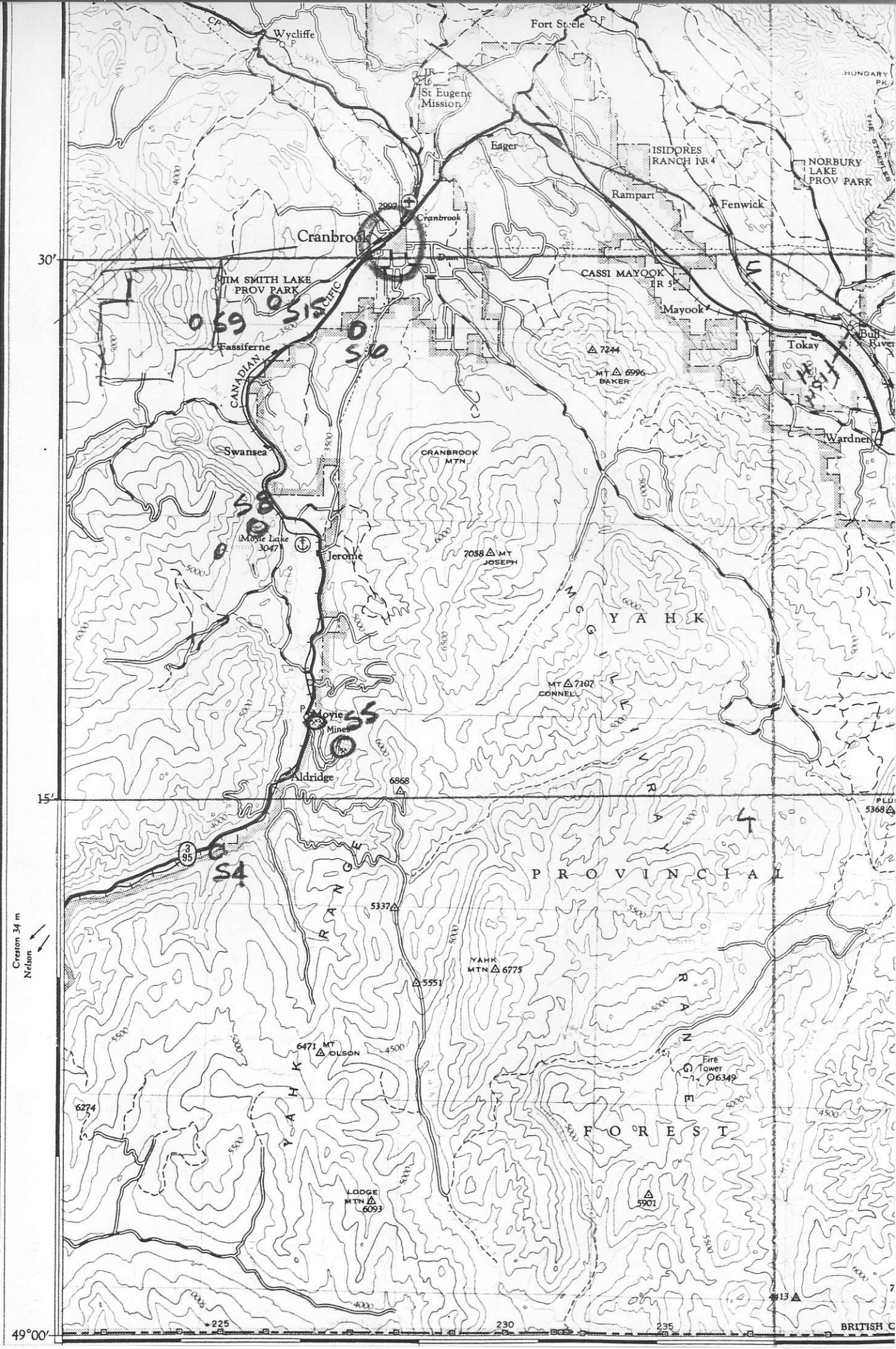
JIM SMITH LAKE DDH

Don Buckley
67.

MAP 08265*

B2G SW-1

REP-NO	NTS	NAME(S)	OPERATOR/ AUTHOR(S)	YEAR OF WORK	DATE OF AFFIDAVIT	M.D. CLASS.	WEEK	TYPES REPORTED
0001	082605W	BARKSHANTY ETNA LARSON TRADEDOLLAR	ST. EUGENE MIN. SMITH, ALEXANDER	47	777777	FS	0	GFOL
0011	082604W 082605W	ML 60-71	ST. EUGENE MIN. SMITH, ALEXANDER	47		FS	0	GFOL
0041	082605W	BARKSHANTY ETNA LARSON TRADEDOLLAR	ST. EUGENE MIN. SMITH, ALEXANDER	48		FS	0	MAGG
0056	082605W	ML	ST. EUGENE MIN. SMITH, ALEXANDER	51		FS	0	MAGG
0057	082604W 082605W	ML	ST. EUGENE MIN. SMITH, ALEXANDER	51		FS	0	MAGG
0085	082604W 082605W	ML	ST. EUGENE MIN. SMITH, ALEXANDER	52		FS	0	RIUG
* 0104	082605W	ST. JOSEPH	NORTHWESTERN EX. NEY, C.S.	55		FS	0	GFOL
0813	082604W	STONEV	KENNCO EX. NORTHCOTE, K.E.	66		FS	0	SOIL
0834	082605W	HELG	COMINCO GIFFORD, R.G.	66		FS	0	GEOL SILT SOIL EMGR
0863	082605W	CAT	PLACID OIL SCOTT, J.S. BUCKLEY, R.A.	66		FS	0	MAGG GEOL
0895	082605W	BERI ELEPHANT ST. JOSEPH	RIMROCK MIN. HAMILTON, S.B.	66		FS	0	MAGG
RDH * 1043	082605W	JIM	PLACID OIL SCOTT, J.S. BUCKLEY, R.A.	66		FS	0	GFOL MAGG
* 1063	082605W	PEE PEE	COMINCO STUTSKY, R.E.	67	✓	FS	0	GEOL
* 1174	082605W	JIM CAT CARUL NEIL	PLACID OIL BUCKLEY, R.A. SCHOUR, W.	67	✓	FS	0	GFOL IPOL
* 1148	082605W 082612W	CAROL NEIL	PLACID OIL BUCKLEY, R.A.	67	✓	FS	0	MAGG
* 1207	082605W	JIM	PLACID OIL COOK, J.T.	67	✓	FS	0	FMGR
* 1244	082605W	NORD	PLACID OIL BUCKLEY, R.A.	68		FS	0	MAGG
* 1670	082605W	JILL	PLACID OIL BRAZEAU, A.R.	68		FS	0	IPOL
* 1876	082605W	DAISY BONNET TRILLIUM	MERCURY EX. CURRIE, R.	69		FS	0	GRAY MAGG
2556	082606W 082611W	ALKI	COMINCO SZABO, N.L. HAMILTON, J.M.	69		FS	0	FMGR MAGG SOIL
2604	082606W	JAF	COMINCO HAMILTON, J.M. SZABO, N.L.	70		FS	0	MAGG EMGR SOTI
2851	082606W	TIE	COMINCO HAMILTON, J.M.	70		FS	0	FMGR MAGG
3436	082606W	RIO	RIO ALTO EX. ANSELMU, G.L.	71		FS	0	SOIL
3437	082606W	RIO	RIO ALTO EX. ANSELMU, G.L.	71		FS	0	SOIL
3438	082606E	RIO	RIO ALTO EX. ANSELMU, G.L.	71		FS	0	SOIL
3439	082606E	RIO	RIO ALTO EX. ANSELMU, G.L.	71		FS	0	SOIL
3678	082606W	TIE	COMINCO LANCASTER, D.H.	72		FS	0	SOIL
3700	082606W 082611W	NEW MAX NEW UAM PROVIDENCE	PLACID OIL JENKS, J.D.	71		FS	0	GFOL LINE



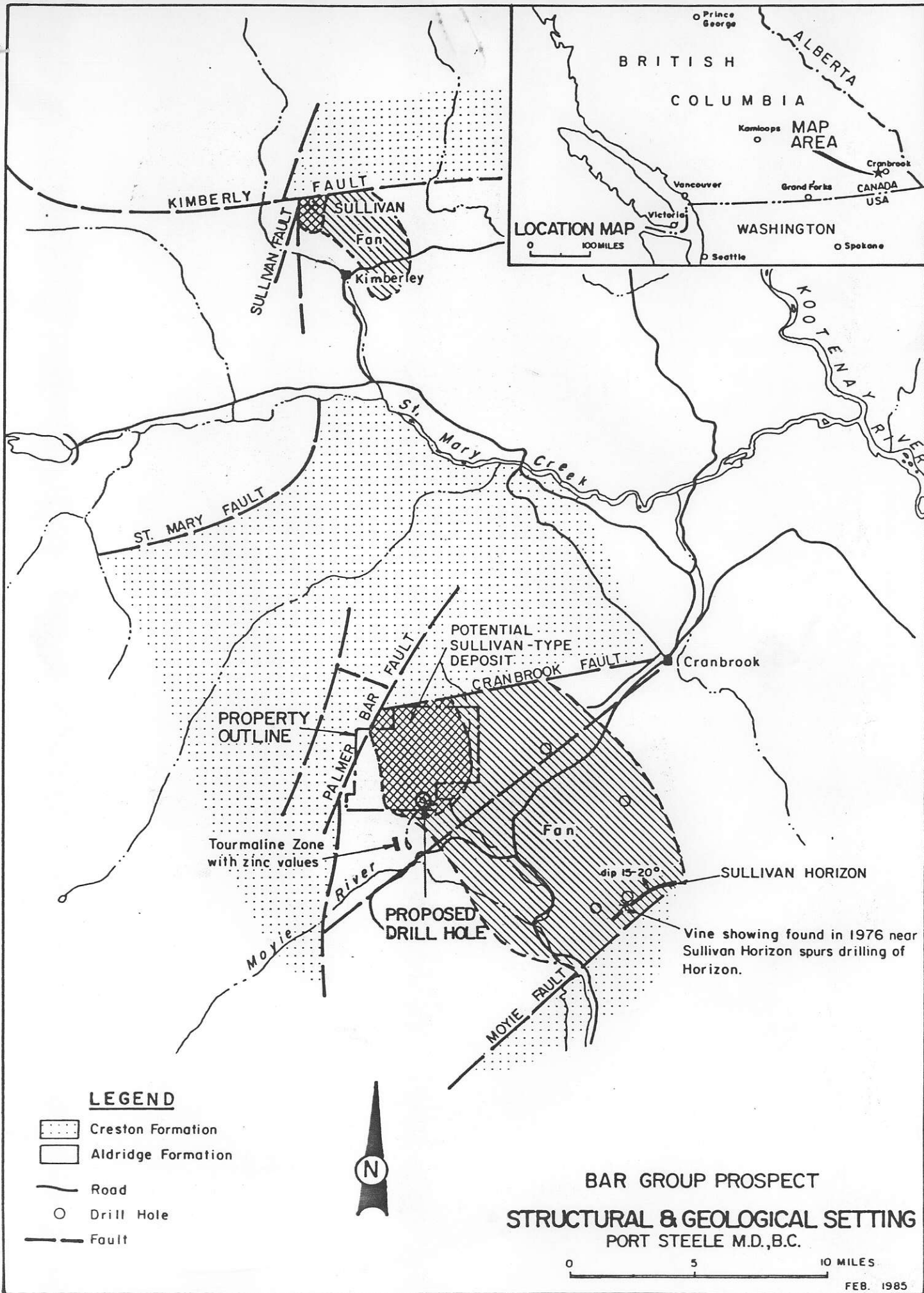
30'

15'

Creston 34 m
Nelson

49°00'

BRITISH C



KIMBERLY FAULT

SULLIVAN FAULT

SULLIVAN Fan

Kimberley

ST. MARY FAULT

St. Mary Creek

KOOTENAY RIVER

POTENTIAL SULLIVAN-TYPE DEPOSIT

CRANBROOK FAULT

Cranbrook

PROPERTY OUTLINE

PALMER BAR FAULT

Tourmaline Zone with zinc values

Moyle River

PROPOSED DRILL HOLE

Fan

dip 15-20°

SULLIVAN HORIZON

Vine showing found in 1976 near Sullivan Horizon spurs drilling of Horizon.

MOYIE FAULT

