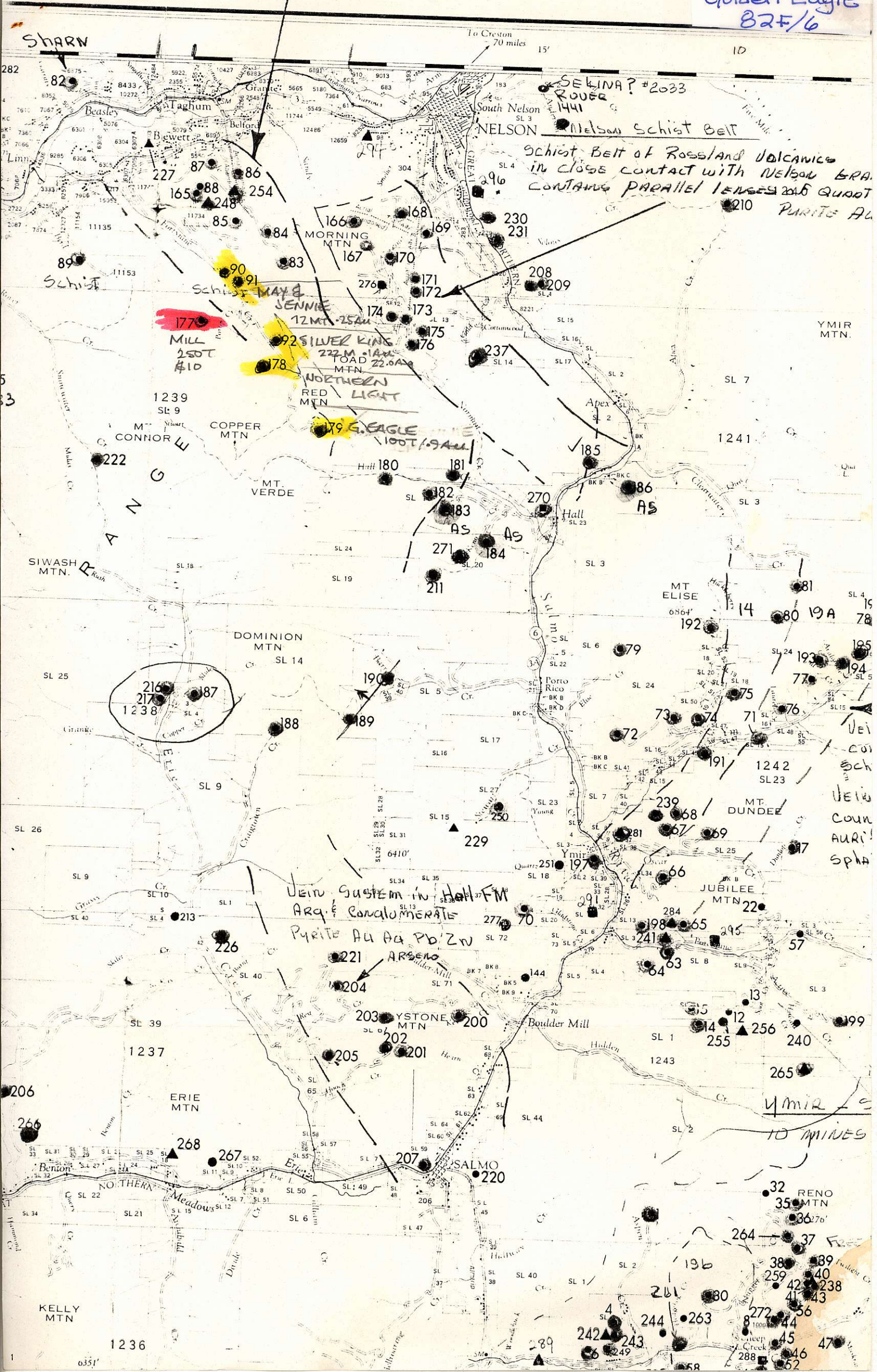


QUARTZ VEINS IN ROSSLAND FM & NELSON BATH.  
CONTAIN PYRITE AU AG PO ZN

680109  
Golden Eagle  
82F/6



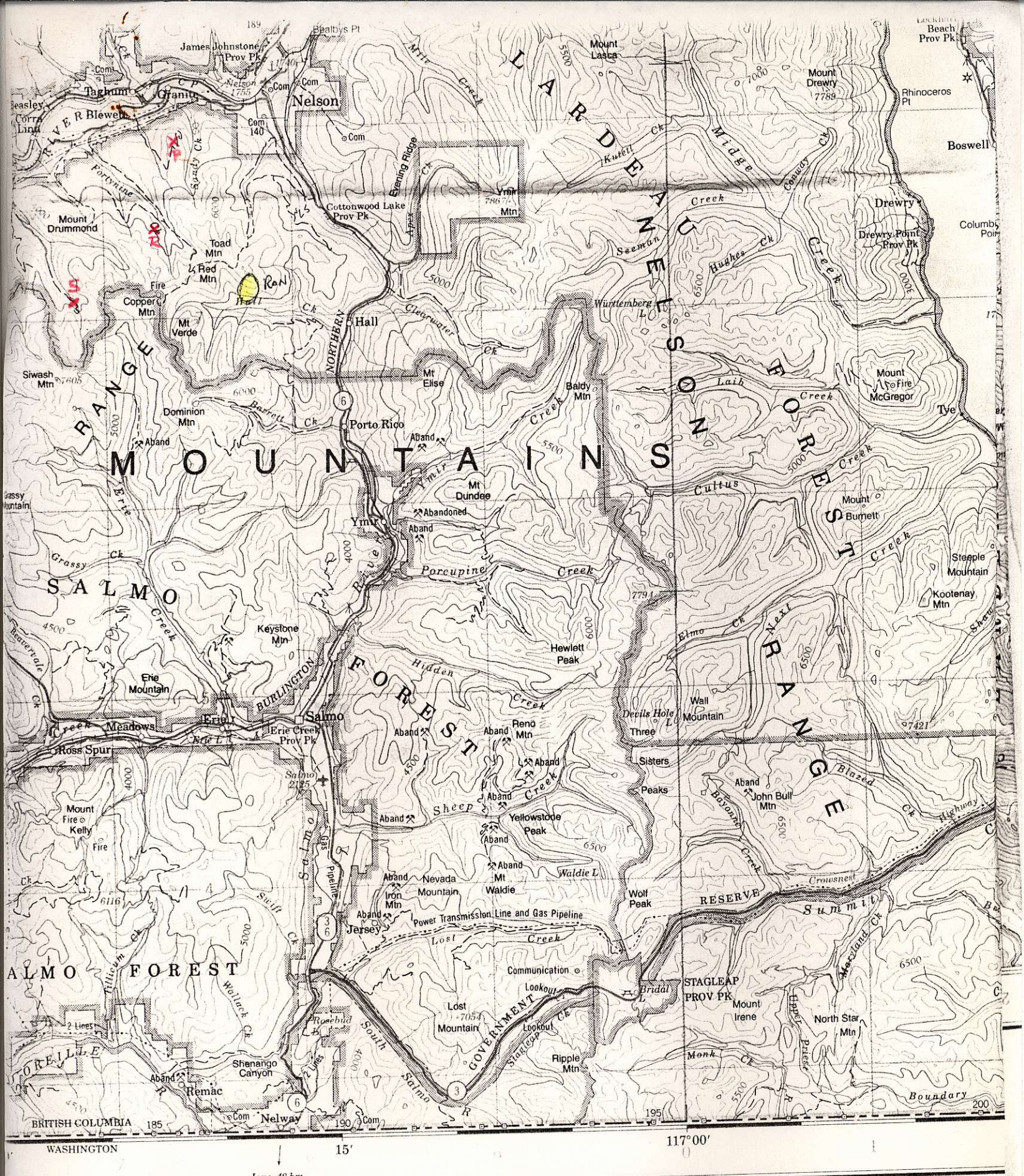
SELINA? #2033  
ROVER 1441  
NELSON Schist Belt  
Schist Belt of Rossland Volcanics  
in close contact with Nelson GRA  
CONTAINS PARALLEL LENSES OF QUARTZ  
PYRITE AU

177 MILL 250T #10  
178  
179 G. EAGLE 100T / 9.5AU

Vein system in Hall FM  
ARq & Conalumerate  
Pyrite Au Ag PO ZN  
ARSENIO

Ymir  
10 MINES

RENO MTN  
32  
35  
36  
37  
38  
39  
40  
41  
42  
43  
44  
45  
46  
47  
48  
49  
50  
51  
52  
53  
54  
55  
56  
57  
58  
59  
60  
61  
62  
63  
64  
65  
66  
67  
68  
69  
70  
71  
72  
73  
74  
75  
76  
77  
78  
79  
80  
81  
82  
83  
84  
85  
86  
87  
88  
89  
90  
91  
92  
93  
94  
95  
96  
97  
98  
99  
100



BRANCH SOURCES as shown in  
 Information concerning bench marks and horizontal survey monuments can be obtained from Geodetic Survey, Surveys and Mapping Branch, Ottawa.

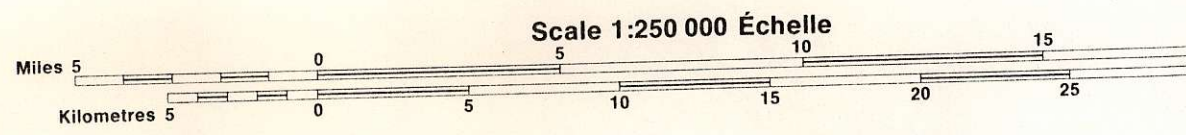
Pour tout renseignement aux levés géodésique

# NELSON

## BRITISH COLUMBIA COLOMBIE-BRITANNIQUE

Office,  
Ottawa.  
Canada.  
es.

—+—+—+—+—	more than 2 lanes
—+—+—+—+—	plus de 2 voies
—+—+—+—+—	less than 2 lanes
—+—+—+—+—	moins de 2 voies
—+—+—+—+—	2 lanes or more
—+—+—+—+—	2 voies ou plus



Magnetic declination 1986 varies from 20°03' easterly at centre of west edge to 19°25' easterly at centre of east edge. Mean annual change decreasing 12.3'.

En 1986, la déclinaison magnétique varie de 20°03' vers l'est au centre du bord ouest à 19°25' vers l'est au centre du bord est. La variation annuelle moyenne décroît de 12.3'.

PLÈTE DES SIGNES. VOIR AU VERSO