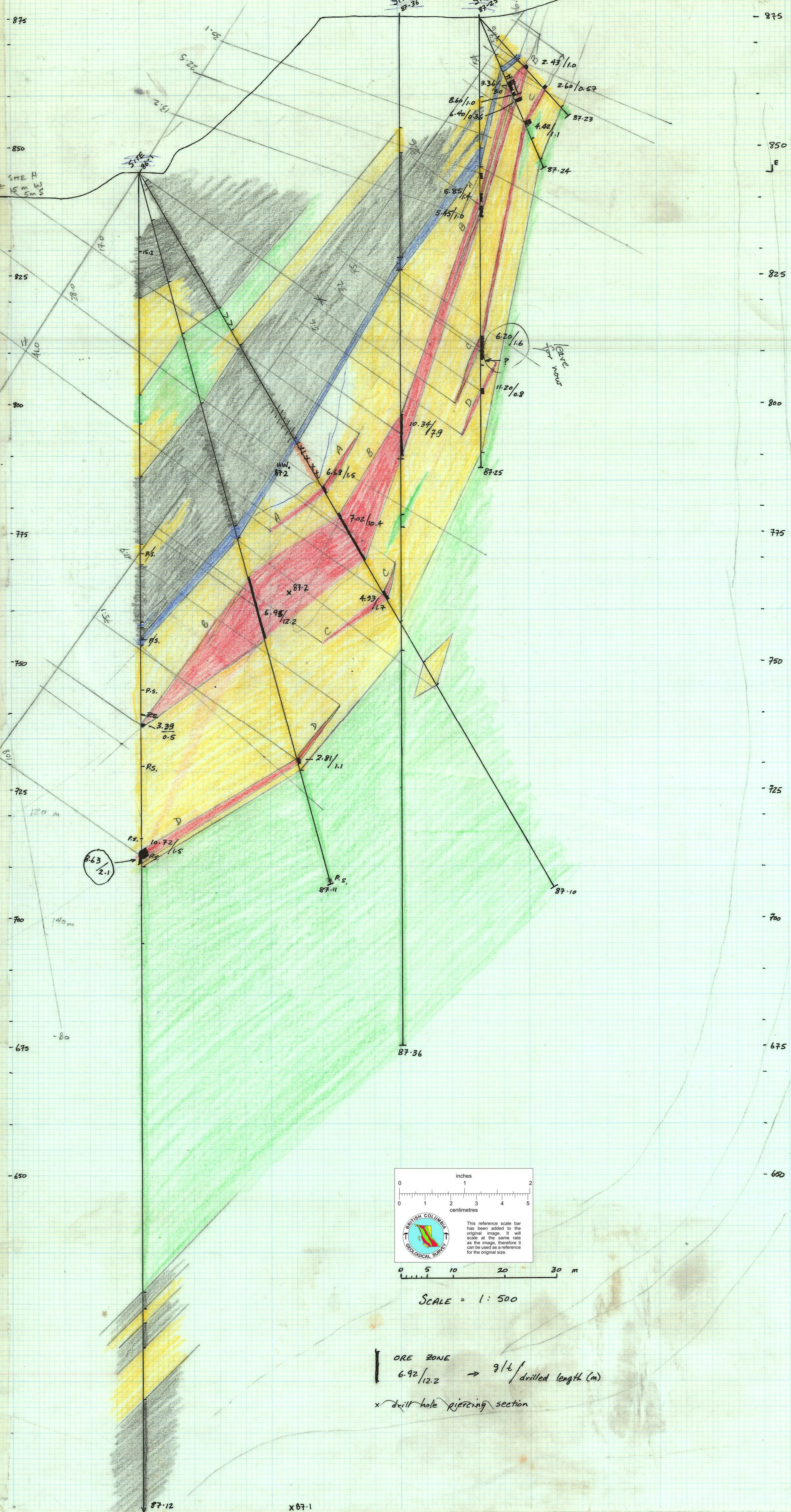
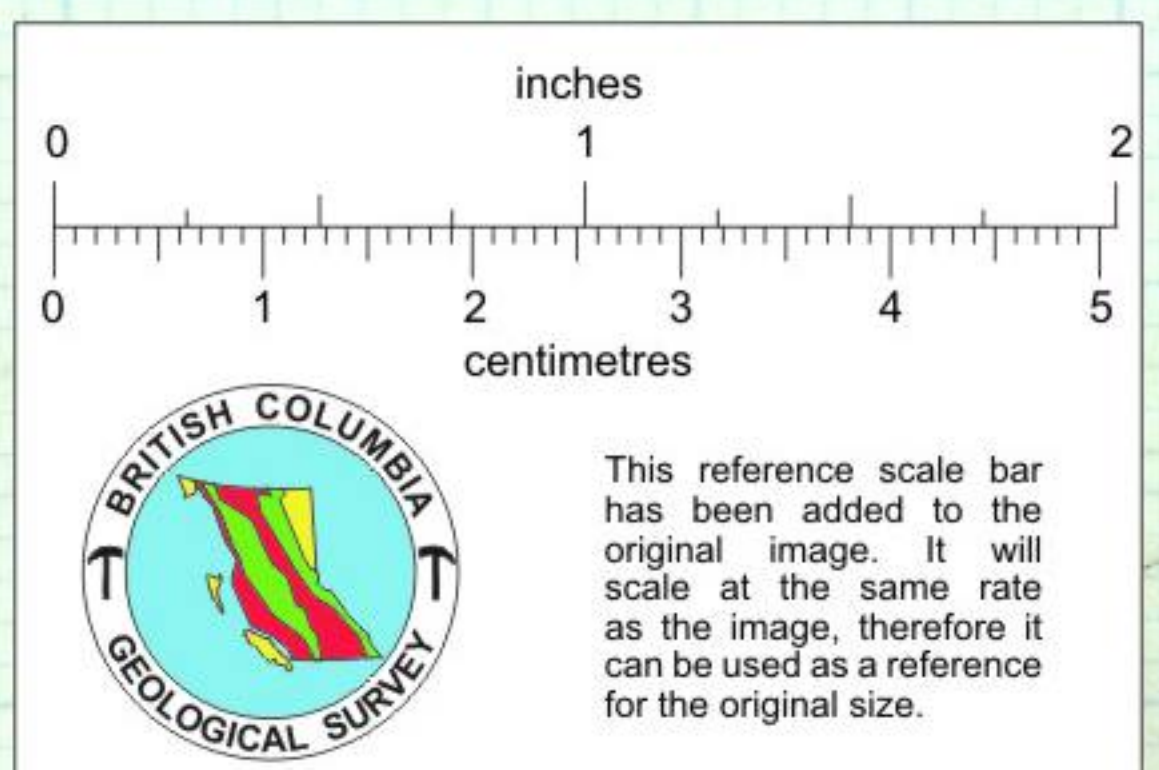


SECTION 100 S.



- strike between Hw 87-2 and Hw projection is 147°
- dominant shear dir. in Imperial zone is 145°
- strike between 60 S & 100 S is 160°

colour on section	LEGEND
black	--- - black argillite & chert
green	v v v - volcanics
yellow	v v v - " : altered
blue	? - "white tuff"
orange	x x x x - dyke
red	■ - "ore zone"



SCALE = 1:500

ORE ZONE
6.92/12.2 → 9 1/2' drilled length (m)
x drill hole piercing section