

SICKER BELT

676954
092B110

LARA

- end of 1986:

- indicated geological reserves (Coronation + Extension)
~ 820,000 tonnes @ 4.1 gms/ft Au, 96.0 gms./ft Ag,
4.5% Zn, 1.0% Pb, 0.75% Cu
- tested to 150 metres depth
- strike length: 400 metres

[includes high-grade zone with strike length 160 metres
@ 8.2 gms/ft Au, 230 gms/ft Ag, 14.9% Zn, 3.1% Pb,
1.5% Cu]

- submitted prospectus to MDR Committee in February
- management indicated need to reach 1.8 million tonnes
reserves before W/g decision.

1987

- drilled 12,000 metres in 59 holes so far
(3500 metres of above was recce. drilling)
- plan 3500 metres more (all recce.) before year end.
- Coronation zone now tested to depth 300 metres & strike
length 550 metres
- reserves not announced but "close to target".
- have announced decision to go W/g with a decline early in 1988.

Debbie Project - Westmin 50%, Nexus 25%, Angle 25%

- includes old Vancouver Island Gold Mine & Regina Mine sites.

- 3 separate zones being intensively drilled:

Mineral Creek zone: - major N-S fault-controlled alteration zone (300 m. strike)

- mafic volcanics sheared & altered to carbonate, sericite, pyrite, & qtz.

- e.g. 4.3 gms. Au / 11.3 metres

~~20.2 gms Au / 2.1 metres~~

900 Zone: - 1220 m. SSE of Mineral Creek Zone

- magnetite, jasper, & sulphide-bearing chert with q.v. stockwork in footwall basalt

- e.g. 39.0 gms. Au / 13.5 metres

94.6 gms Au / 2.1 metres

Linda Zone: - 213 m. east of M. Crk. zone

- qtz. vein structures

- e.g. 19.8 gms. Au / 3.0 m.

44.9 gms. Au / 1.4 m.

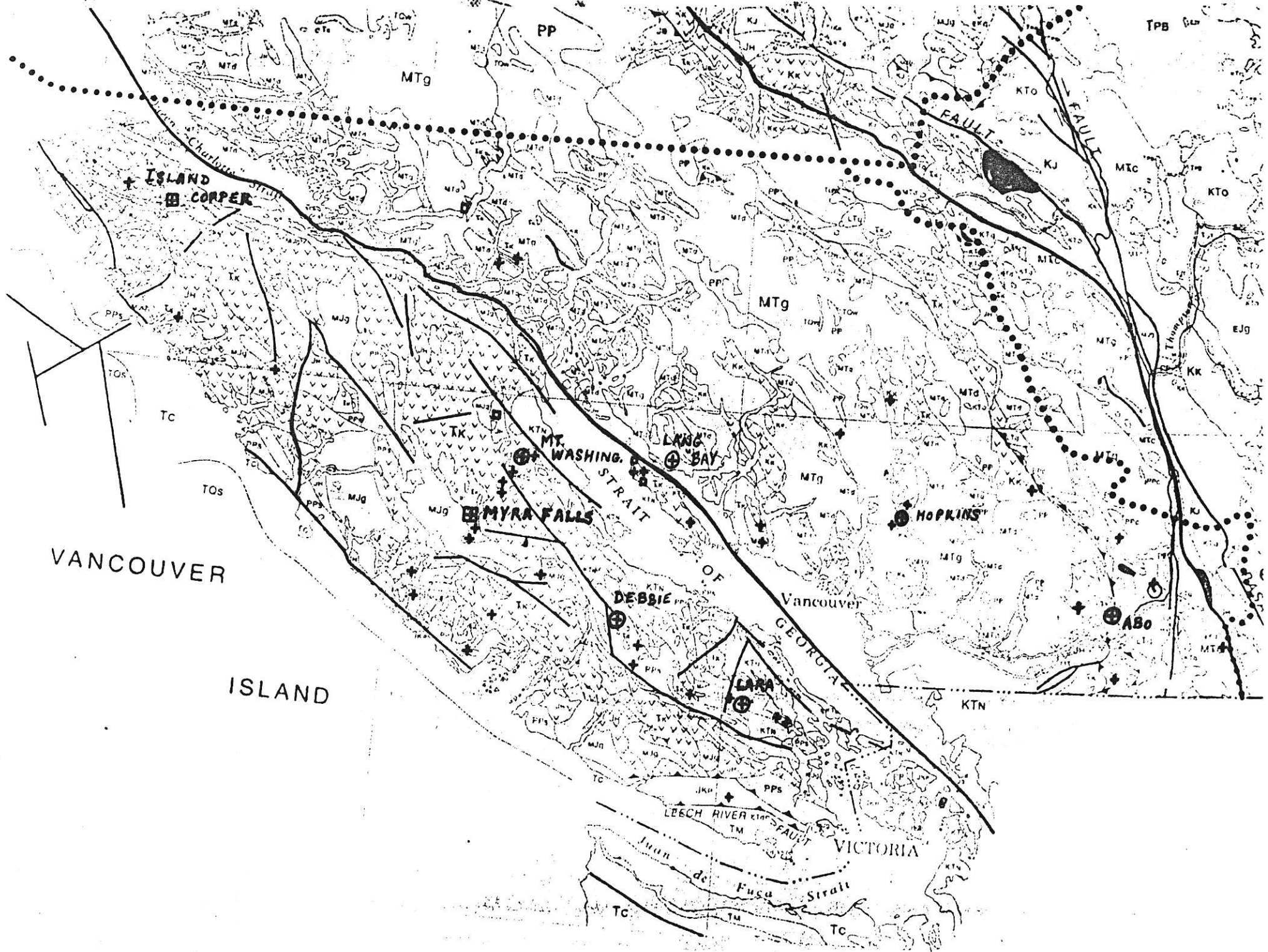
- major program with several geological crews.

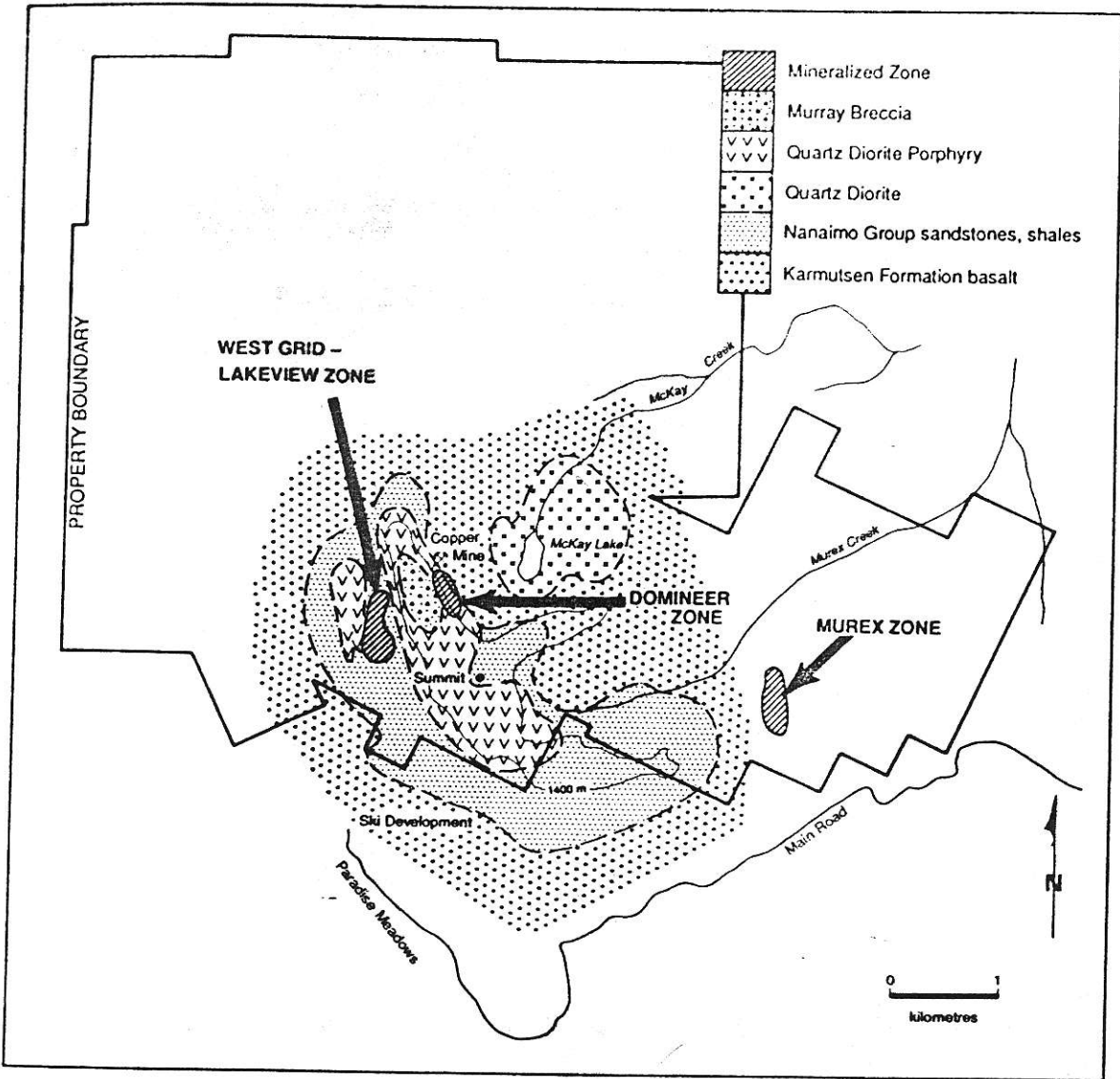
- several other anomalous zones yet to be tested.

- Westmin has made J.V. arrangement with Silver Cloud Mines to work on Yellow claim (extension of Mineral Creek Zone).

Mt. Washington - Better Resources

- tabular, shallow-dipping alteration zone up to 30 m. thick in central bx in py/arsenopy.
 - previous production: ~ 363,000 tonnes @ 1.09% Cu
 - total drill indicated @ end of 1986: 235,900 tons @ 0.23 oz/t Au (7.9 gms.)
1.15 oz/t Ag (39.4 gms.)
 - " " inferred reserves: 485,700 tons @ 0.18 oz./t (6.2 gms. Au).
 - one hole in Murray breccia: 52.3' (15.9 m) @ 0.178 oz. Au (6.1 gms. Au)
0.12 oz. Ag (4.1 gms. Ag).
- 1987
- have had 2 (and sometimes 3) drills operating since May
 - drilled exactly 100 holes in 1987 (@ Oct. 9th) + still drilling. (+ 8 holes @ Murray)
↳ (incl. 8 holes on Oyster + 6 holes on Glacier Ridge.)
 - most recent drill results reported: (hole no 128 on Lakeview)
 - 3 "bands" of ore in a 39 metres zone of alteration:
 - 1.2 m. @ 6.8 gms. Au
 - 3.0 m. @ 13.0 gms. Au
 - 1.5 m. @ 24.0 gms. Au
 - total: 19.6 m. @ 4.25 gms. Au.
 - $\frac{1}{9}$ - 300 m. adit underway (@ 75 m. on Oct. 9th)
 - portal @ DDH # 42: 3.5 m. @ 11.2 gms. Au, 85.4 gms. Ag
 - will get 6000 tonne sample of which 20 tonnes will be tested this year.
 - assays on wall of slot: averaged 26.4 gms. Au, 115.5 gms. Ag avg. 2 m.
 - incl. high-grade bands up to 106 gms. Au





LAKEVIEW - DOMINEER AREA
GENERALIZED CROSS - SECTION A - A

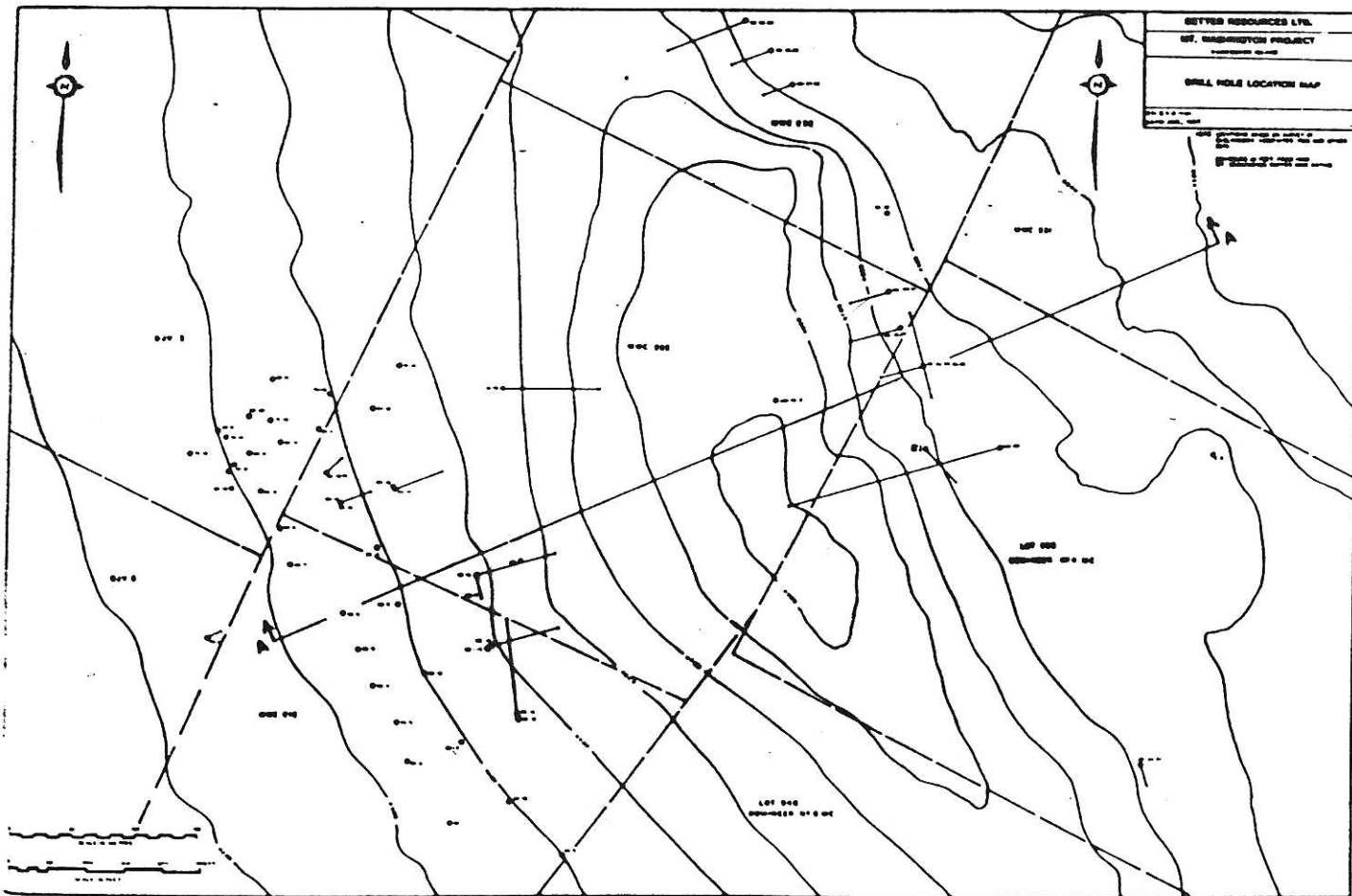
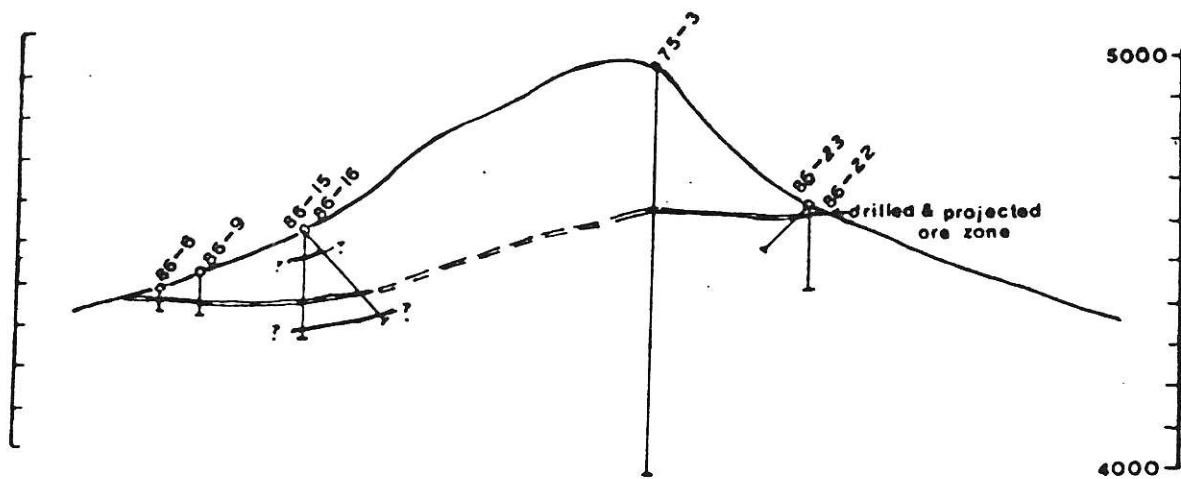


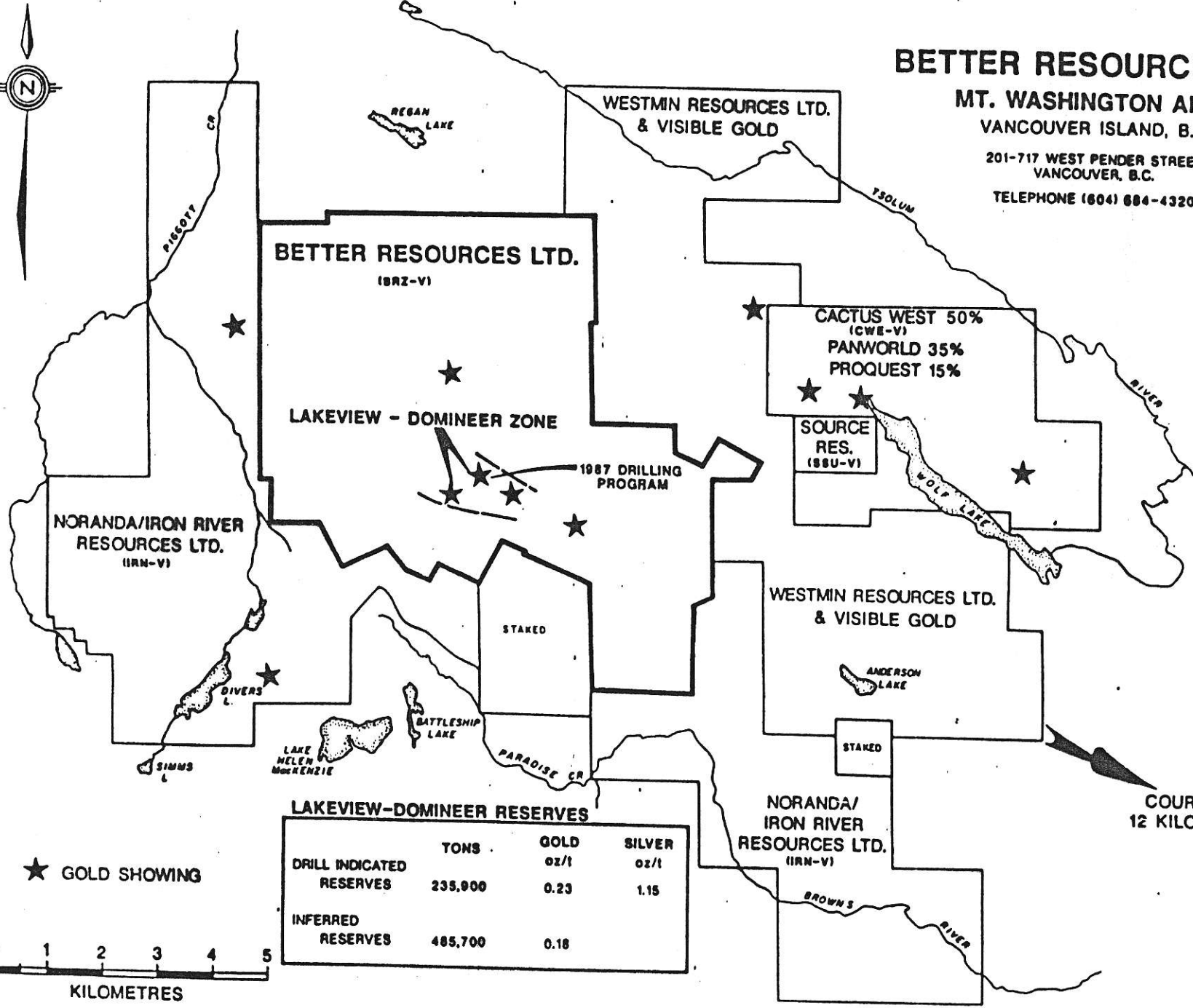
FIGURE 4



BETTER RESOURCES LTD.

**MT. WASHINGTON AREA
VANCOUVER ISLAND, B.C.**

201-717 WEST PENDER STREET
VANCOUVER, B.C.
TELEPHONE (604) 684-4320



LAKEVIEW-DOMINEER RESERVES

	TONS	GOLD oz/t	SILVER oz/t
DRILL INDICATED RESERVES	235,900	0.23	1.15
INFERRED RESERVES	485,700	0.18	

★ GOLD SHOWING

