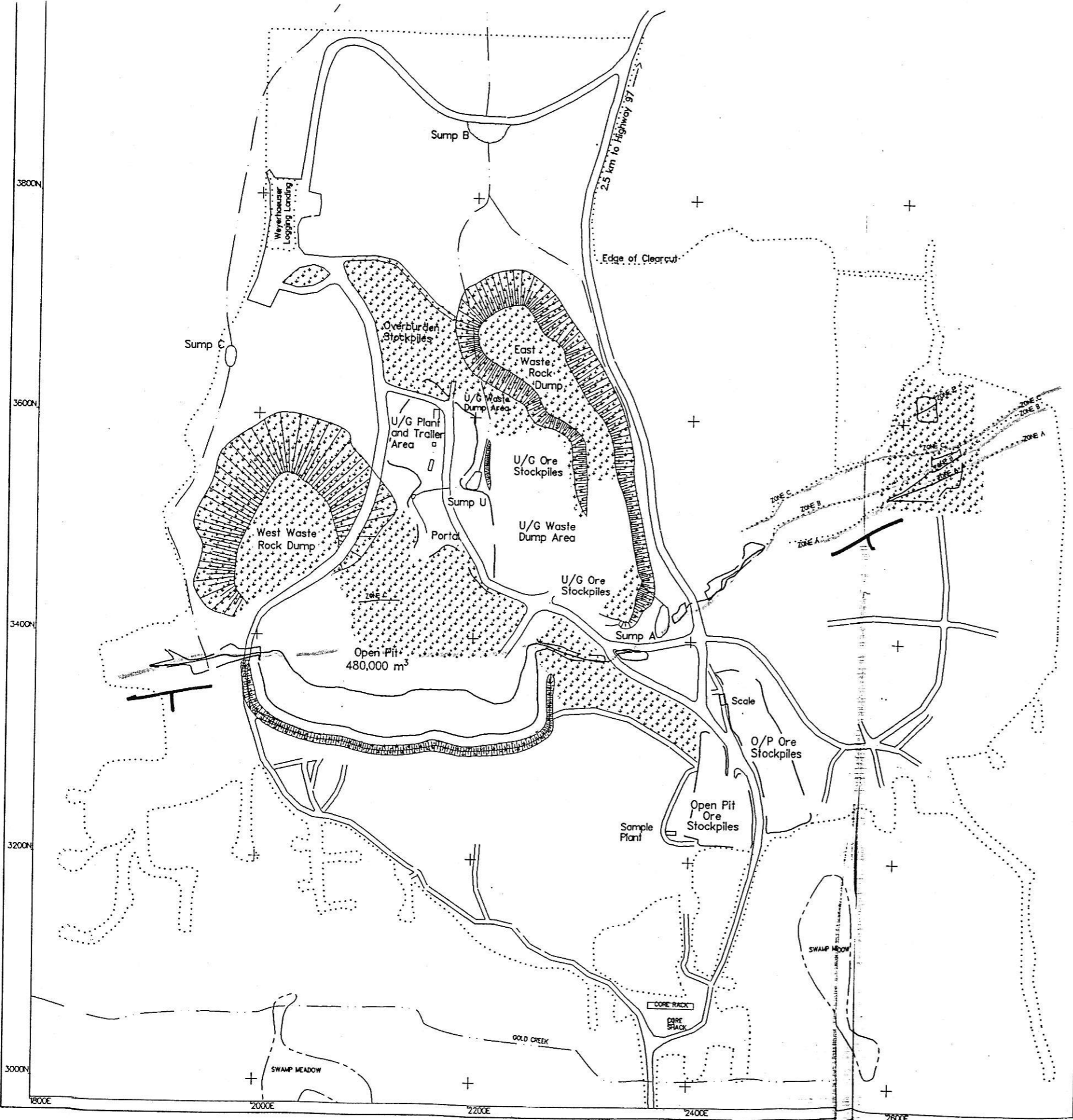


Fairfield Minerals Ltd.

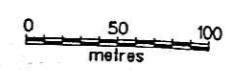
Ministry of Employment and Investment
Kamloops, B.C.
Rec'd **JAN 13 1998**



3800N
3600N
3400N
3200N
3000N
1800E
2000E
2200E
2400E
2600E

SYMBOLS

- ROAD
- EDGE OF CLEARCUT
- CREEK
- TRACE OF MINERALIZED ZONE
- PROJECTED TRACE OF MINERALIZED ZONE
- OUTLINE OF OPEN TRENCH
- RECLAIMED AREA - SLOPED, OVERBURDEN COVERED AND SEEDING



SIWASH GOLD MINE

GENERAL SITE PLAN

SCALE 1 : ~~2500~~

FAIRFIELD MINERALS LTD.
1880 - 1055 West Hastings Street Vancouver, British Columbia V6E 2E9

Drawn by WJ
Mar. 1998

Figure 3

676908
092HNE096