



BRITISH  
COLUMBIA

# FOX PROPERTY (27 km N. of Merritt)

[Samples collected + analyzed by Tom Schroeter]  
+ photos  
Oct. 16/00

## BRIEF DESCRIPTION

SAMPLE #	BRIEF DESCRIPTION
[TS-FOX-] 1	Meta volcanic (Nicola Gr.?) - epidote + hematite. Intense folding.
2	Banded massive sulphides (sphalerite, chalcopryite, galena, tetrahedrite(?) + barite. Stretched alt'd fragments of sericite schist within MS.
3	Bedded/banded massive sulphides (as above). Small sample - not cut/analyzed <small>photo-graphed</small>
4	Banded massive sulphides (sphalerite, pyrite, galena, tetrahedrite(?), chalcopryite(?) in siliceous (cherty) host.
5	Brecciated massive sulphides (sphalerite, chalcopryite, galena, pyrite, tetrahedrite). folding + boudinage of quartz ± sericite schist frags. looks like a 'sulphide mud'.
6	Mineralized (pyrite, chalcopryite, sphalerite, galena, tetrahedrite(?) chert breccia <small>(exhalite?)</small>
7	As above - exhalite?
8	As above - exhalite?
9	Very fine-grained massive sulphides (sphalerite, chalcopryite, galena, pyrite, tetrahedrite) matrix with <small>rotated</small> fragments of quartz ± sericite schist (hint of 'Durchbewegung' texture <small>ie Besshi-type?</small>
10	Well-mineralized <small>banded</small> cherty (exhalite?) horizon (chalcopryite, pyrite, sphalerite, galena, tetrahedrite?)
11	Plagioclase-phyric flow (tuff) cut by quartz veinlets.
12	Very finely bedded massive sulphides (sphalerite, chalcopryite, galena, pyrite, tetrahedrite) ± sulphosalts with cherty (exhalite?) horizon. [metamorphic 'stretching'??]
13	Similar to #5 - more banded than brecciated [sulphide mud?]
14	Very finely banded massive sulphides (sphalerite, chalcopryite, galena, pyrite, tetrahedrite) - Durchbewegung texture (qtz. fragments) [ie Besshi-type?]
15	Mineralized (pyrite + ?) chert breccia
16	'Typical' (eg. #5, 9, 13, 14) banded massive sulphides cut by qtz. veinlets
17	Well foliated intermediate to felsic tuff / sericite schist [part of host?]
18	'Typical' (eg. #5, 9, 13, 14, 16) banded massive sulphides with eyes/knots of qtz. ± sericite schist. Sample from Gitenes (est. grades - 33.26% Zn, 3.22% Cu, 0.86% Pb, 1459 Au, 1.069 Ag)
19	Altered side - light grey to maroon 'clays' (hematitic ± zinc) Fresh surface - banded to folded massive sulphides (chalcopryite, sphalerite, galena, pyrite, tetrahedrite(?), other sulphosalts(?)).

B.C. MINISTRY OF ENERGY, MINES AND  
PETROLEUM RESOURCES

To:

Ron Smyth → Dave E.

Date:

Nov. 21/00

From:

Tom Schroeder

- |                                                           |                                                          |
|-----------------------------------------------------------|----------------------------------------------------------|
| <input type="checkbox"/> For your approval.               | <input type="checkbox"/> Prepare reply for my signature. |
| <input checked="" type="checkbox"/> For your information. | <input type="checkbox"/> Prepare draft of reply.         |
| <input type="checkbox"/> For necessary action.            | <input type="checkbox"/> Return to me.                   |
| <input type="checkbox"/> Send me copy of reply.           | <input type="checkbox"/> File.                           |
| <input type="checkbox"/> For your comments.               | <input type="checkbox"/> For signature.                  |
| <input type="checkbox"/> Wish to discuss.                 |                                                          |

Re: FOX Property

- assays
- sample descriptions
- xerox of colour photos  
(previously sent) with numbers.

cc. Mike Cathro

Tom

ASSAY CERTIFICATE

B.C. Ministry of Employment (Van) File # A004264

301 - 865 Hornby St., Vancouver BC V6Z 2G3



SAMPLE#	Cu %	Pb %	Zn %	Ag** gm/mt	Au** gm/mt	Ba* %
TS-FOX-1	.007	.05	.03	<.3	<.01	.37
TS-FOX-2	1.742	.69	20.34	42.9	.29	4.03
TS-FOX-3	.145	2.72	3.71	58.6	.46	19.15
TS-FOX-4	.564	.05	9.83	46.2	.55	.07
TS-FOX-5	2.393	1.00	31.18	124.4	.73	8.20
TS-FOX-6	.223	1.15	1.81	79.5	.66	11.14
TS-FOX-7	.008	.01	.07	1.9	.04	2.06
TS-FOX-8	.177	.02	4.40	9.5	.33	.05
TS-FOX-9	1.839	1.08	27.12	75.6	.78	7.44
TS-FOX-10	2.235	.07	7.42	139.3	1.07	.41
TS-FOX-11	.007	<.01	.03	<.3	.03	.03
TS-FOX-12	.419	.04	13.77	64.9	.70	.02
RE TS-FOX-12	.420	.04	13.80	65.1	.70	.02
TS-FOX-13	3.520	.96	33.03	146.7	.82	8.13
TS-FOX-14	4.066	.85	34.39	141.5	.55	9.60
TS-FOX-15	.082	.03	.14	102.6	.52	5.03
TS-FOX-16	4.167	.73	35.10	142.1	.44	8.18
TS-FOX-17	.003	<.01	.05	<.3	<.01	.03
STANDARD R-1/AU-1/SO-15	.842	1.30	2.23	98.4	3.50	.20

COPY

GROUP 7AR - 1.000 GM SAMPLE, AQUA - REGIA (HCL-HNO3-H2O) DIGESTION TO 100 ML, ANALYSED BY ICP-ES.  
 - SAMPLE TYPE: ROCK R150 60C AG\*\* & AU\*\* BY FIRE ASSAY FROM 1 A.T. SAMPLE.  
 BA\* BY FUSION, ANALYSIS BY WHOLE ROCK ICP ASSAY.  
 Samples beginning 'RE' are Reruns and 'RRE' are Reject Reruns.

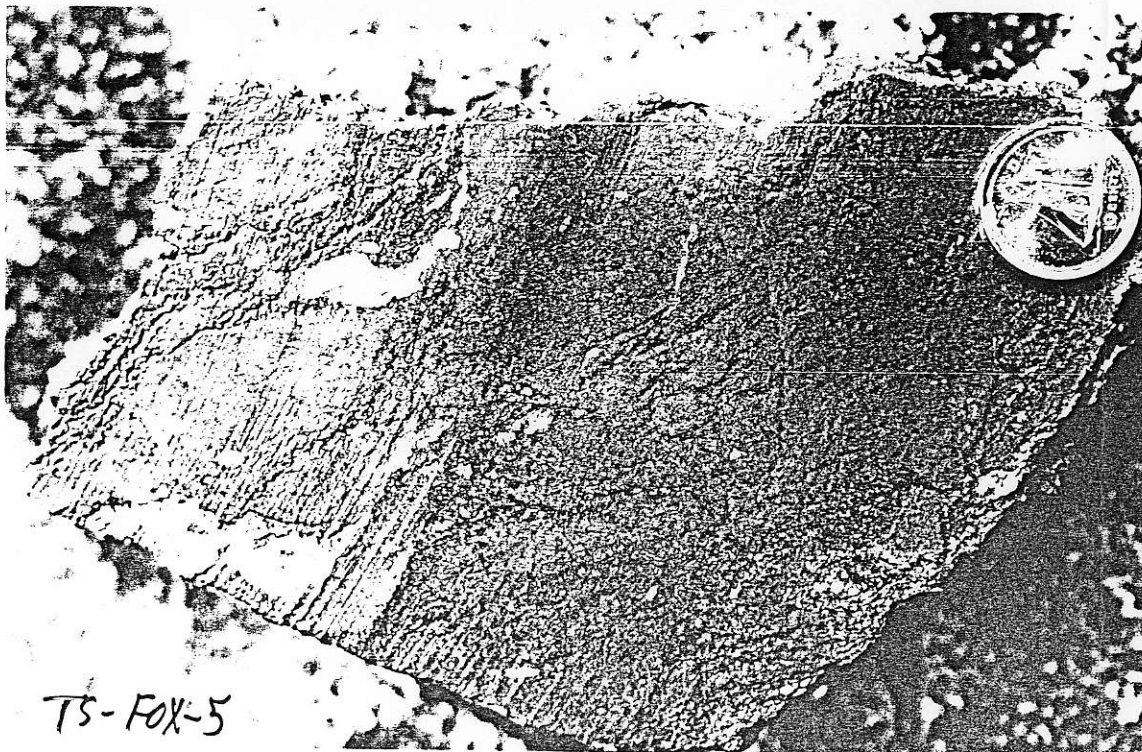
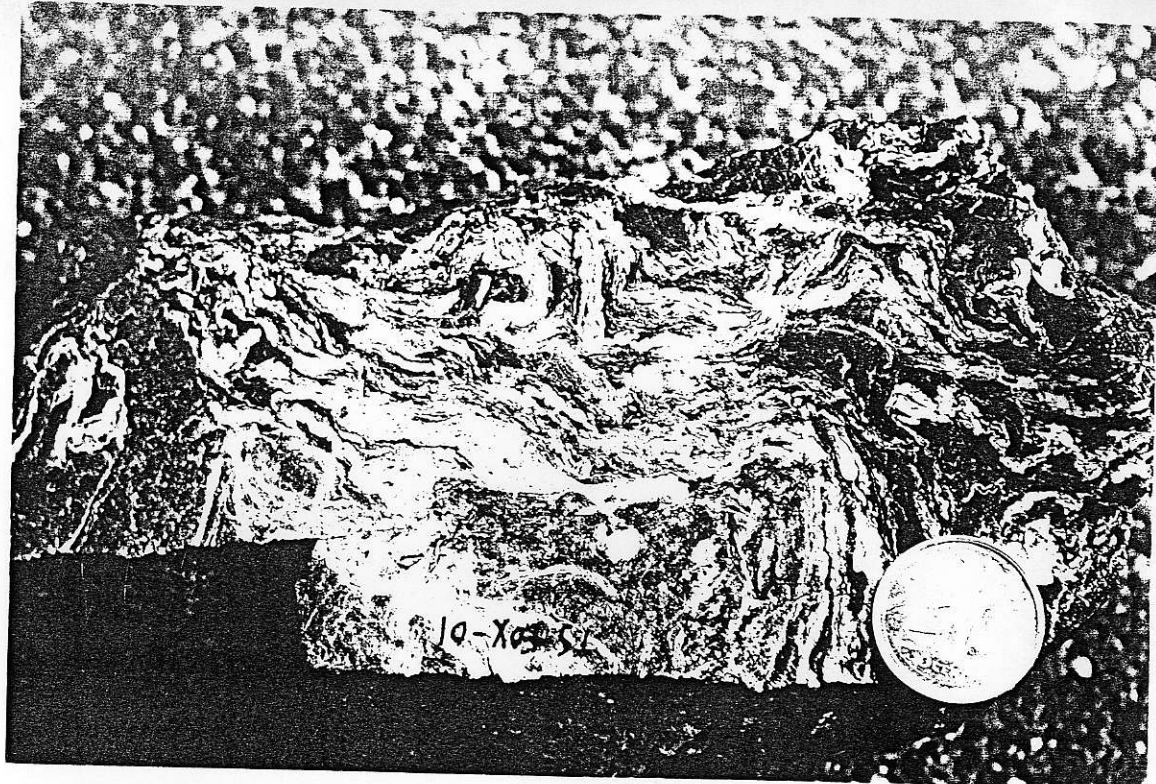
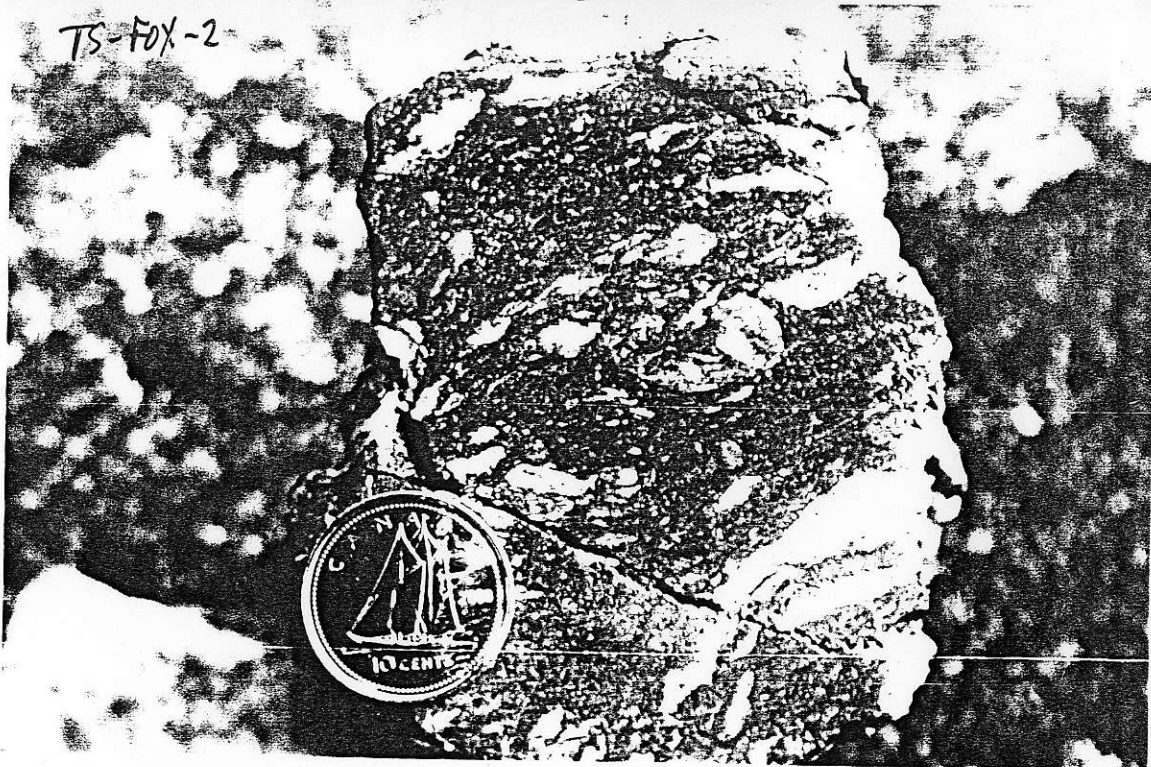
DATE RECEIVED: OCT 23 2000

DATE REPORT MAILED: Nov 7/00

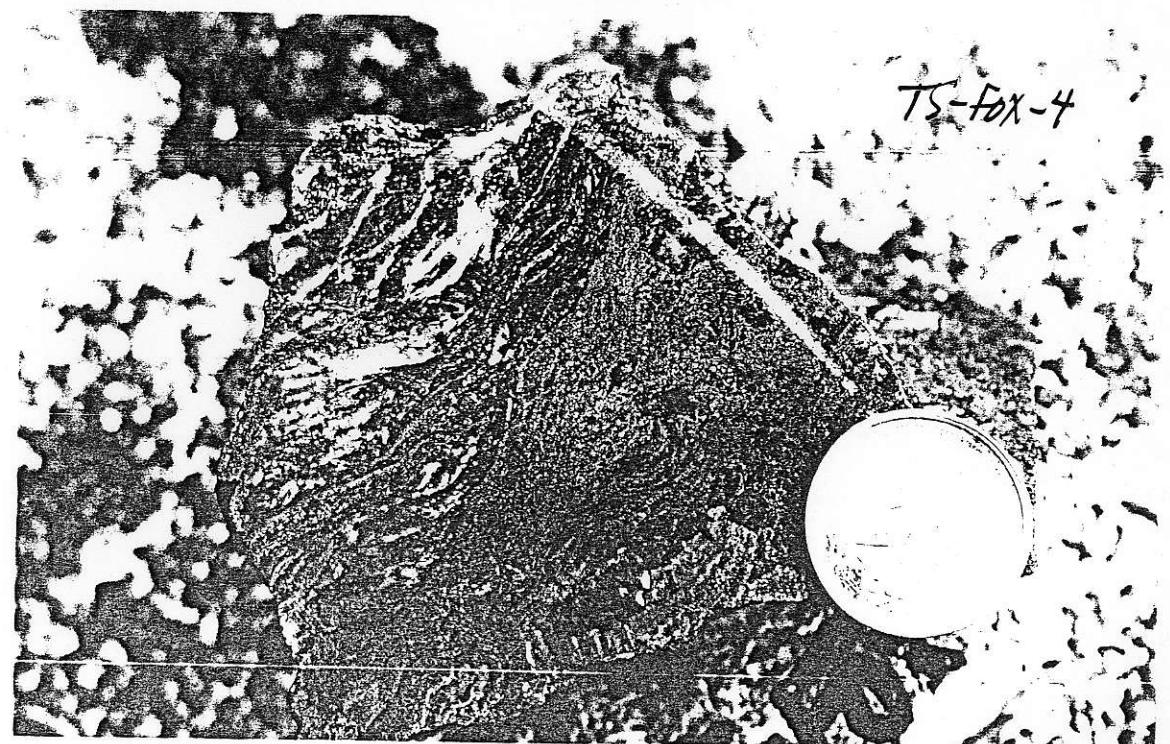
SIGNED BY: *C. Leong* .D. TOYE, C.LEONG, J. WANG; CERTIFIED B.C. ASSAYERS

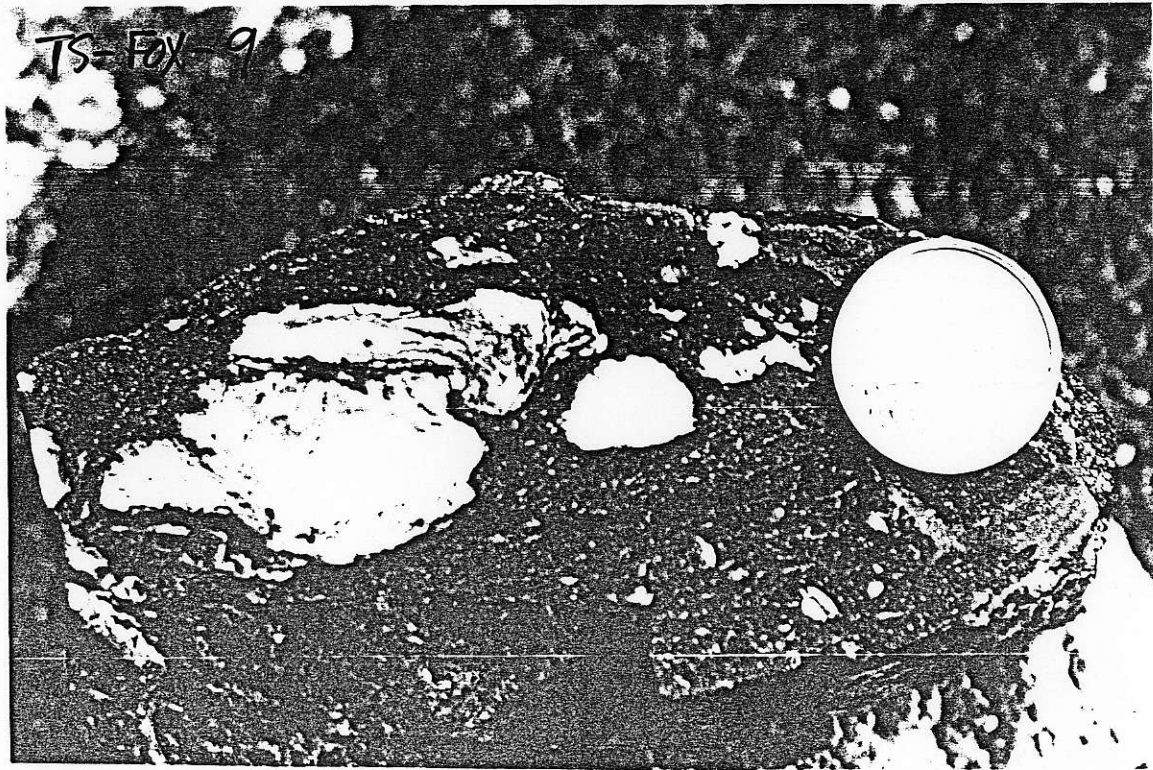
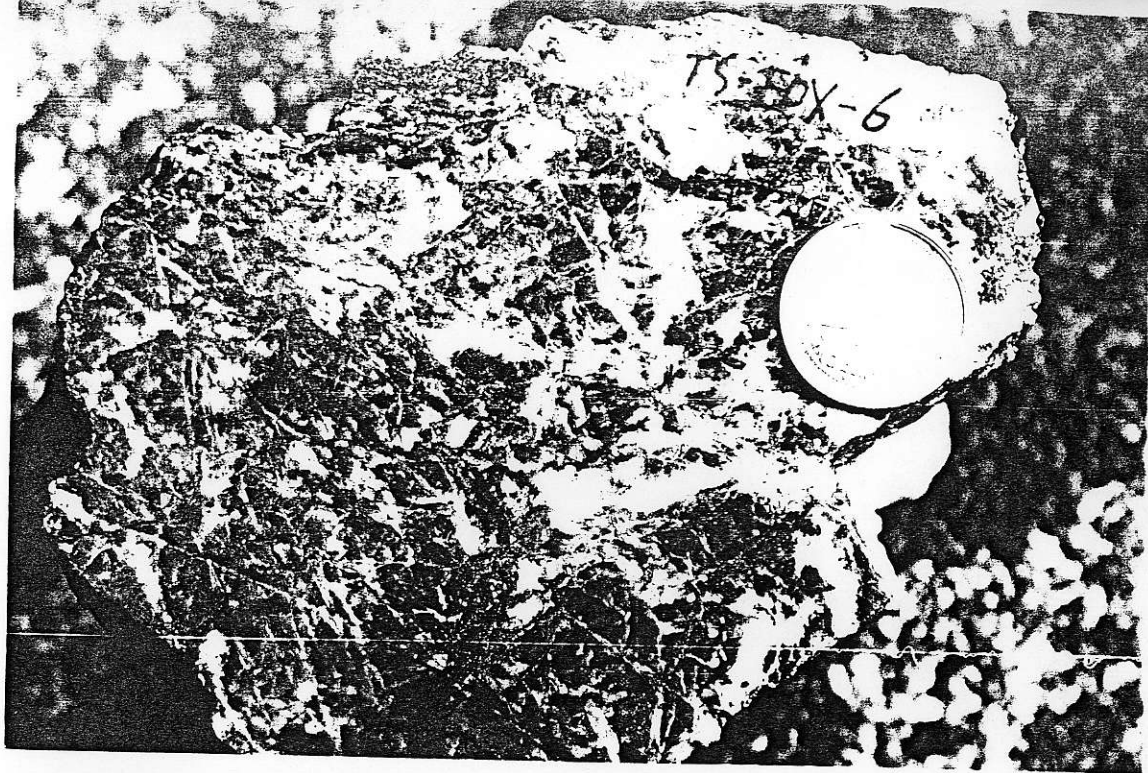
*Tom Schwelt*  
 Nov. 20, 2000

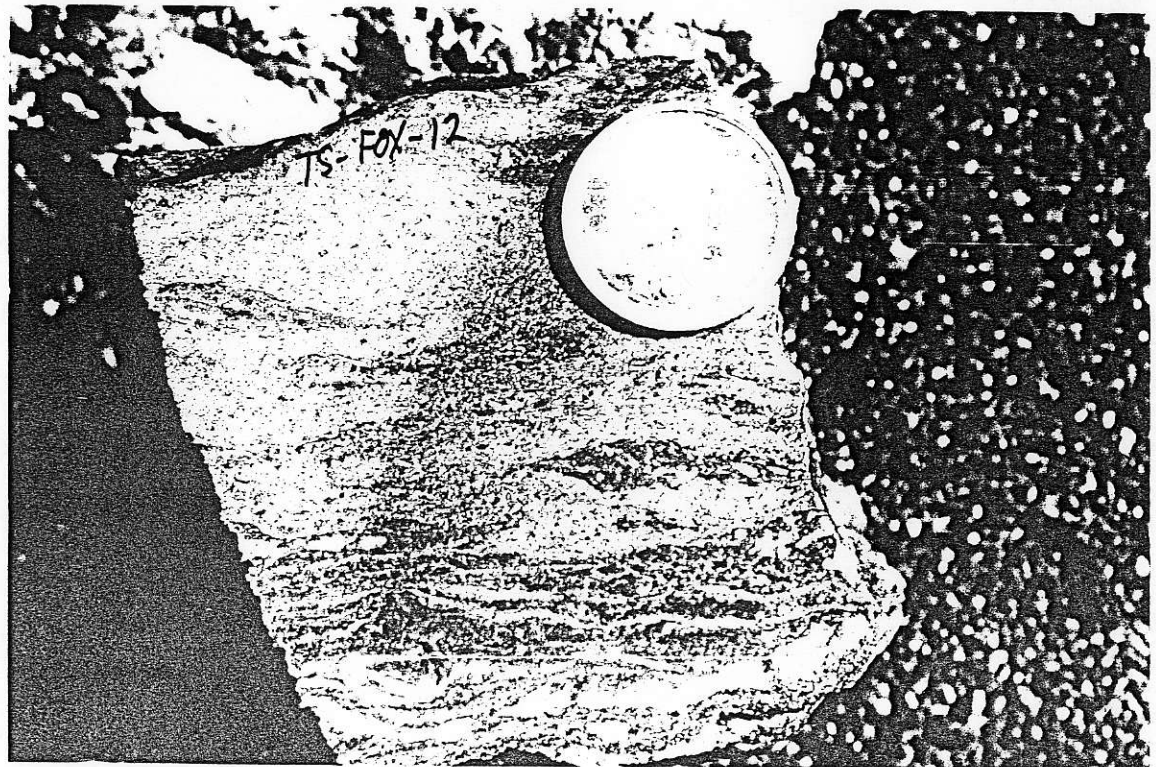
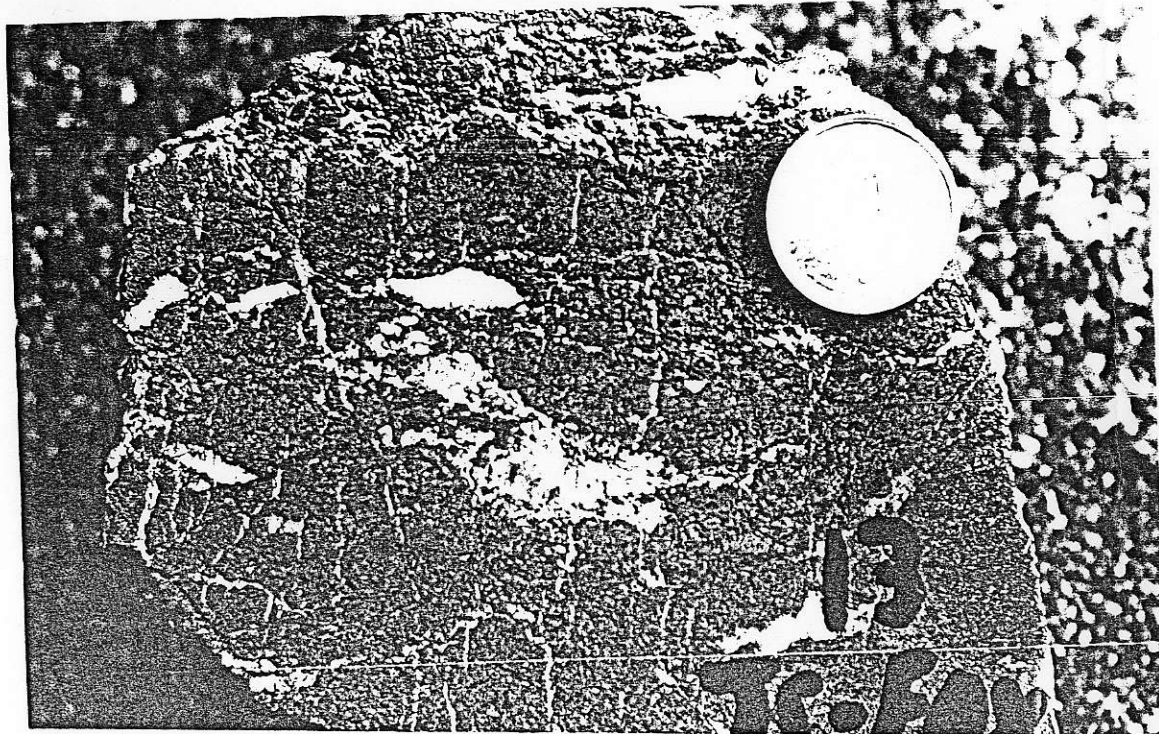
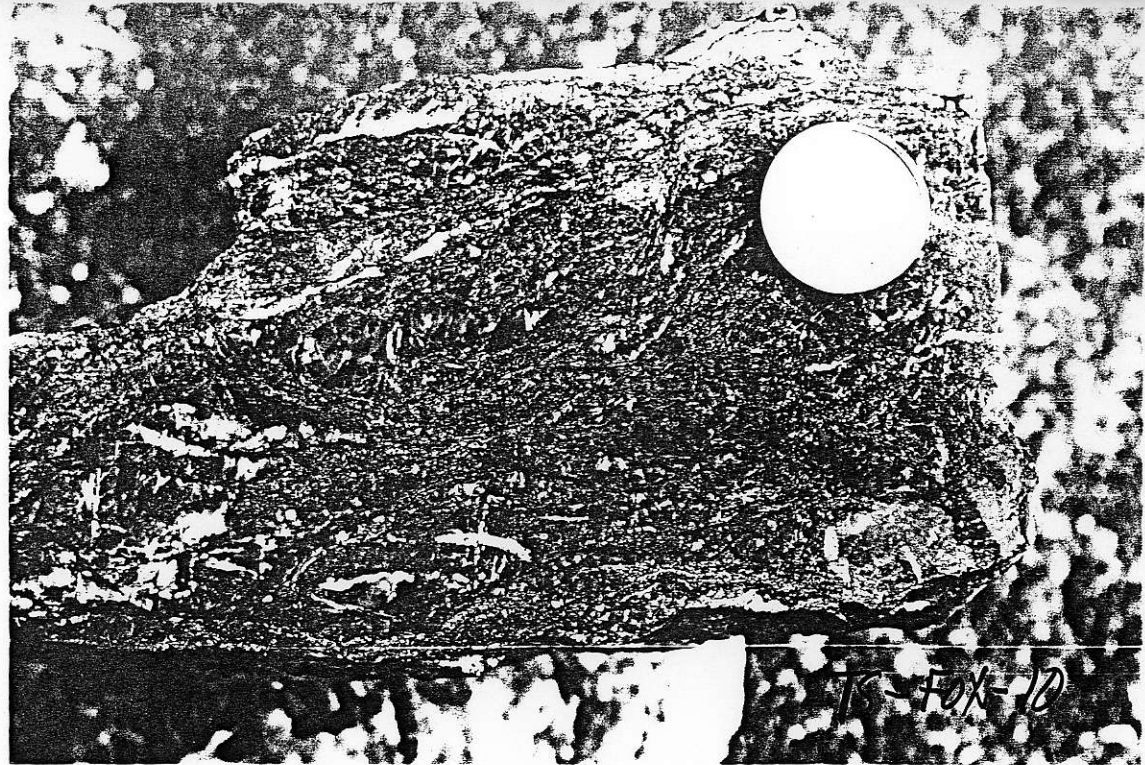
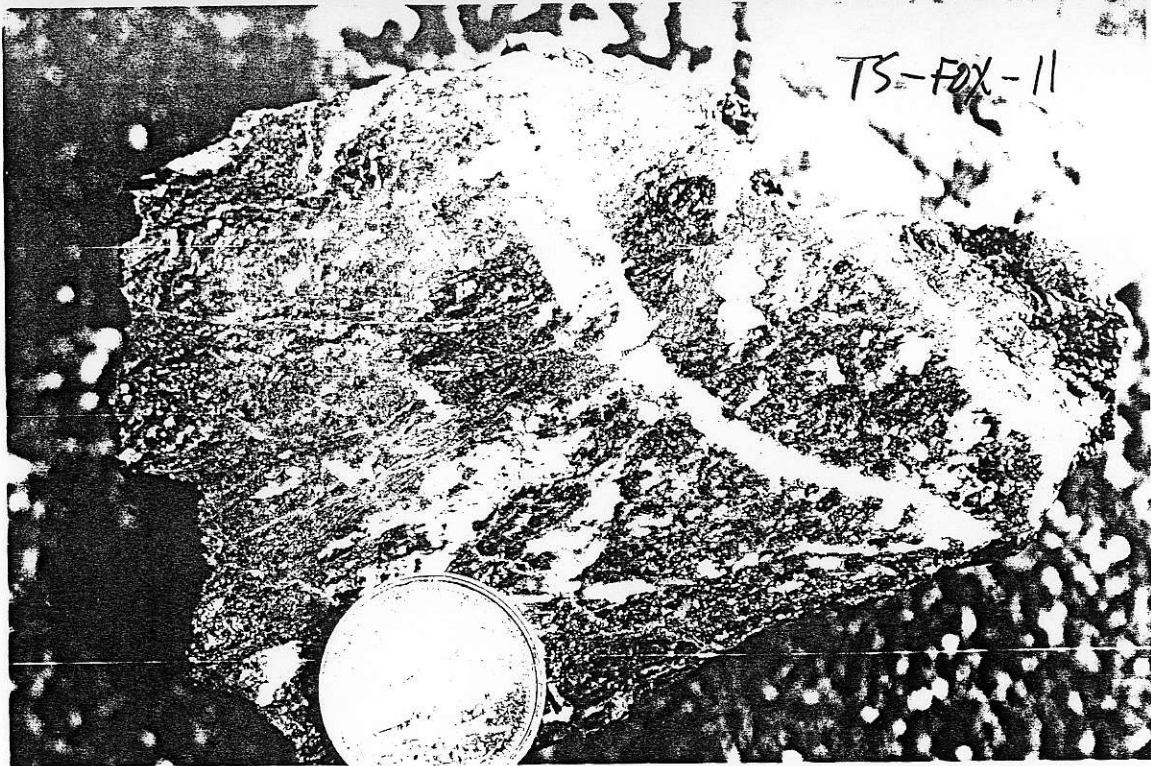
TS-Fox-2

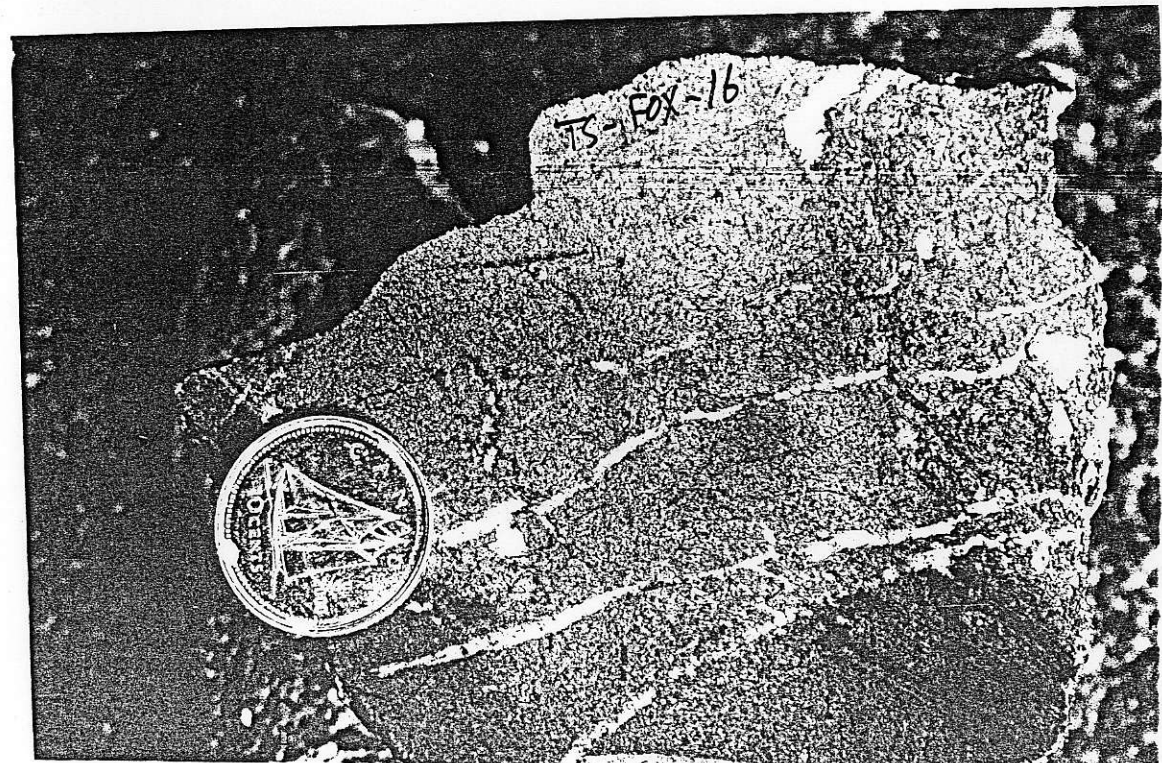
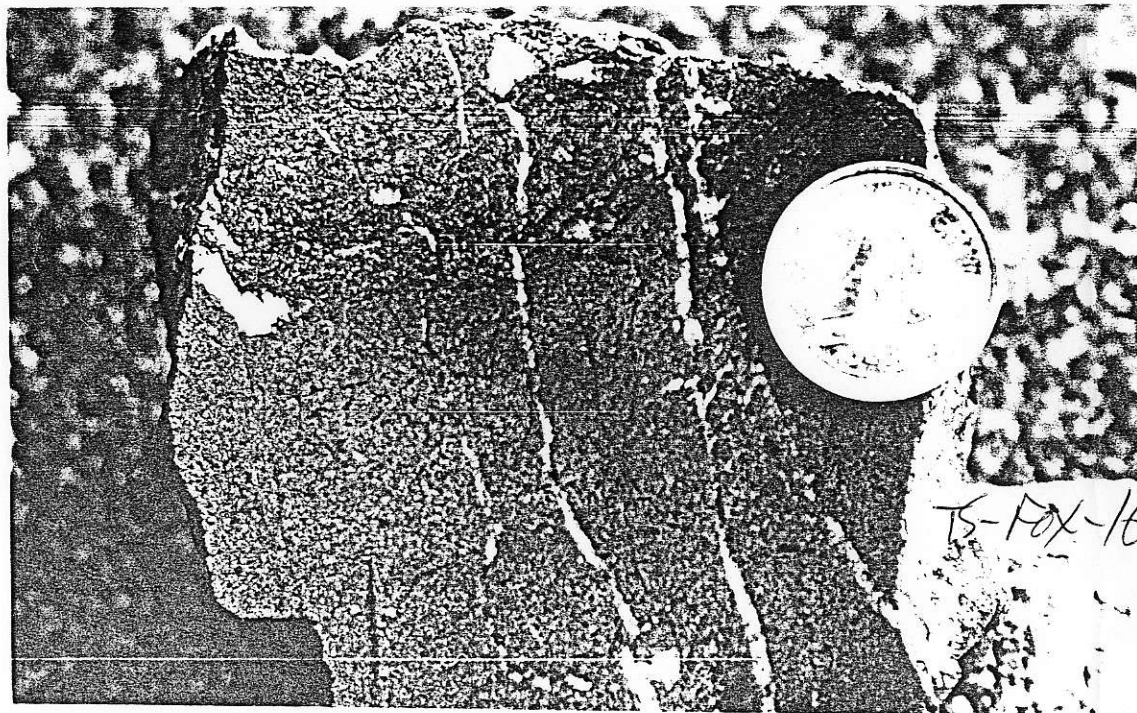
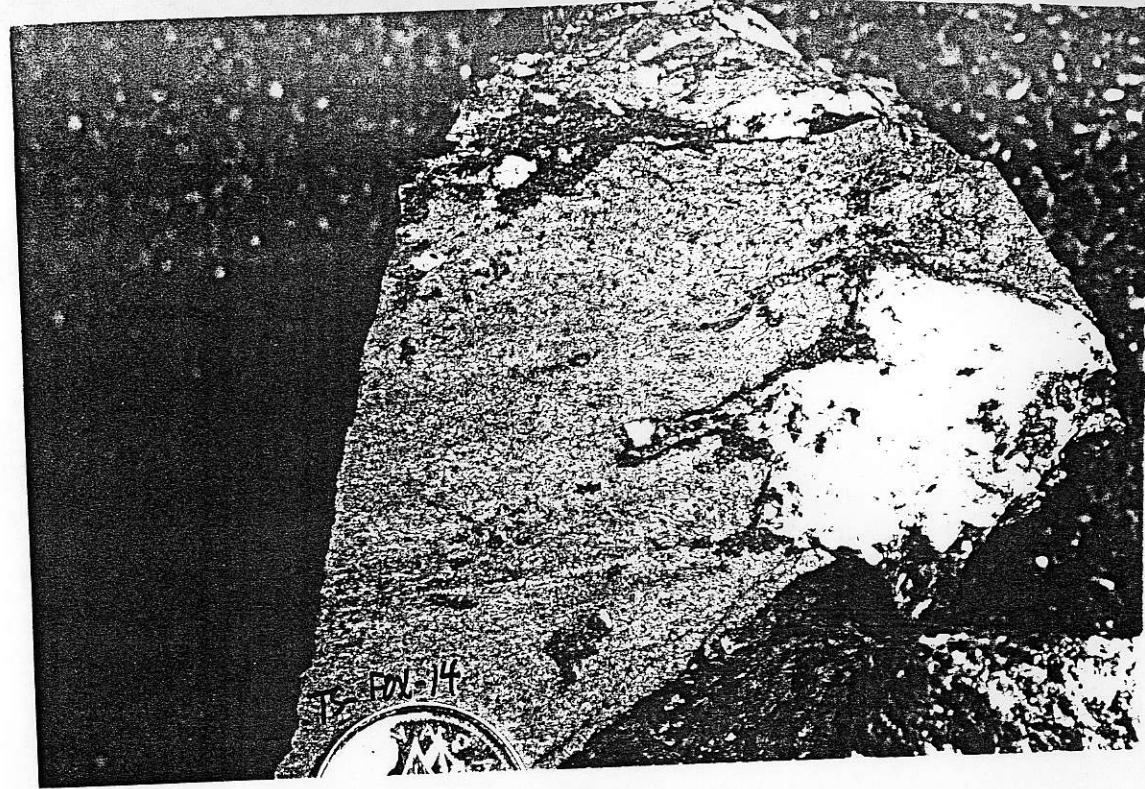
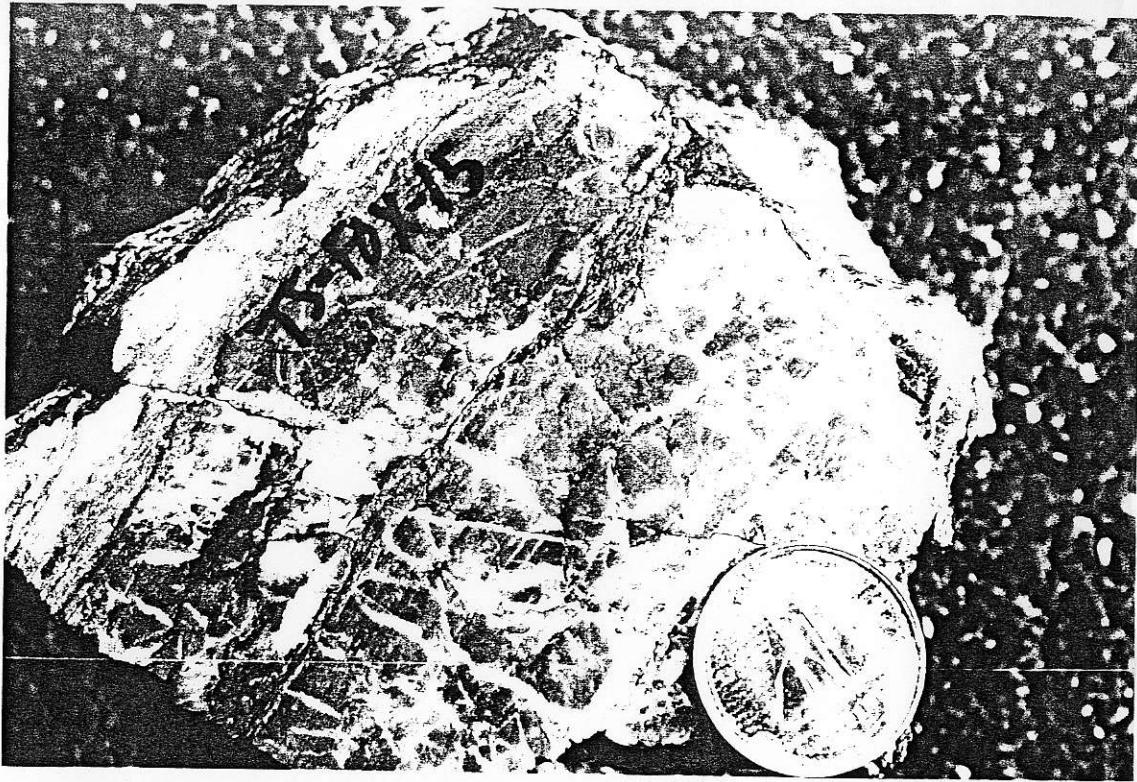


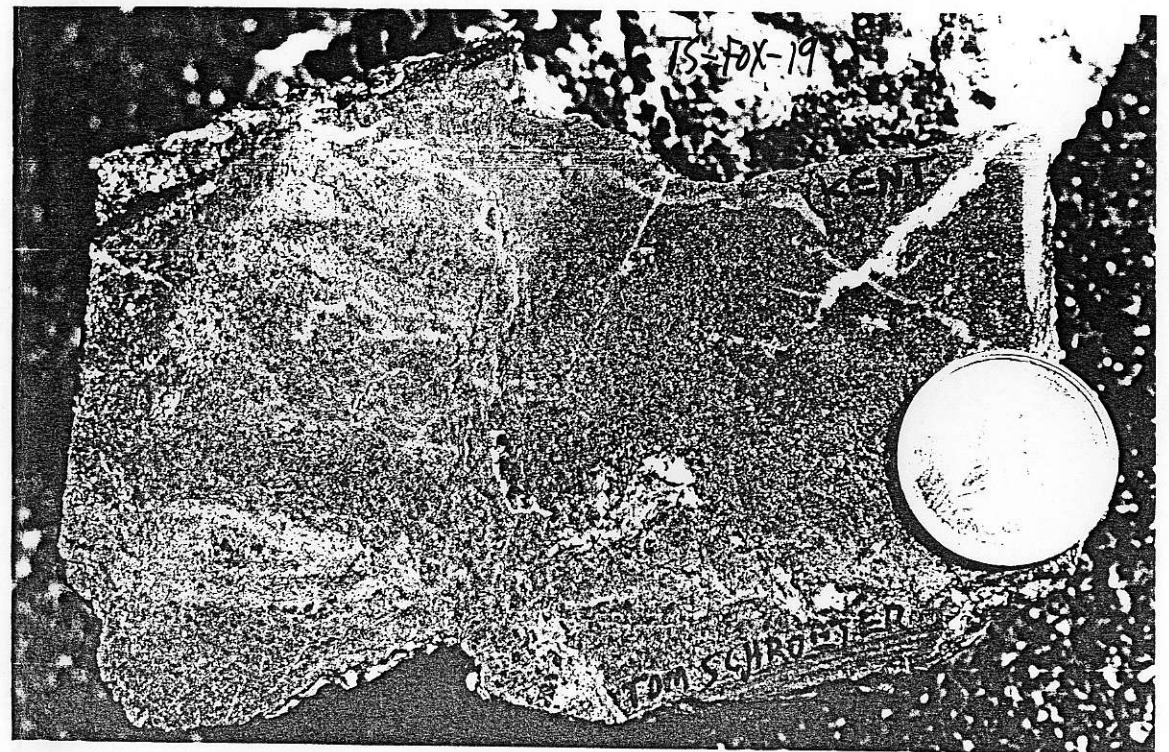
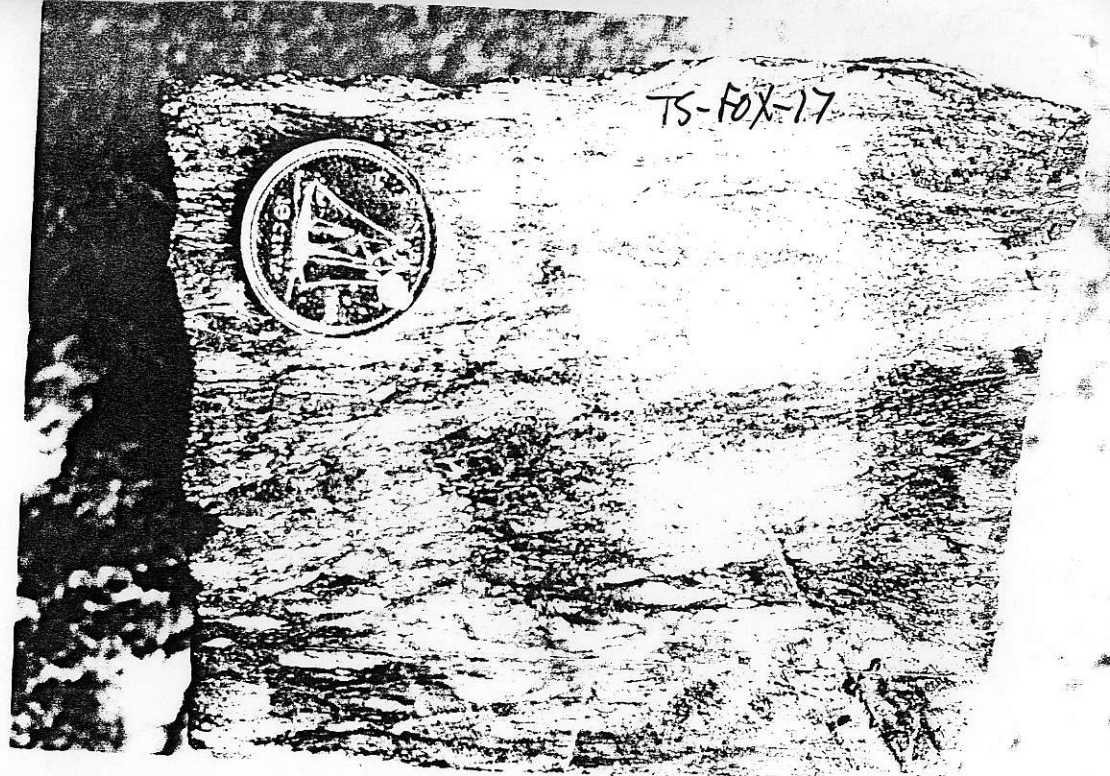
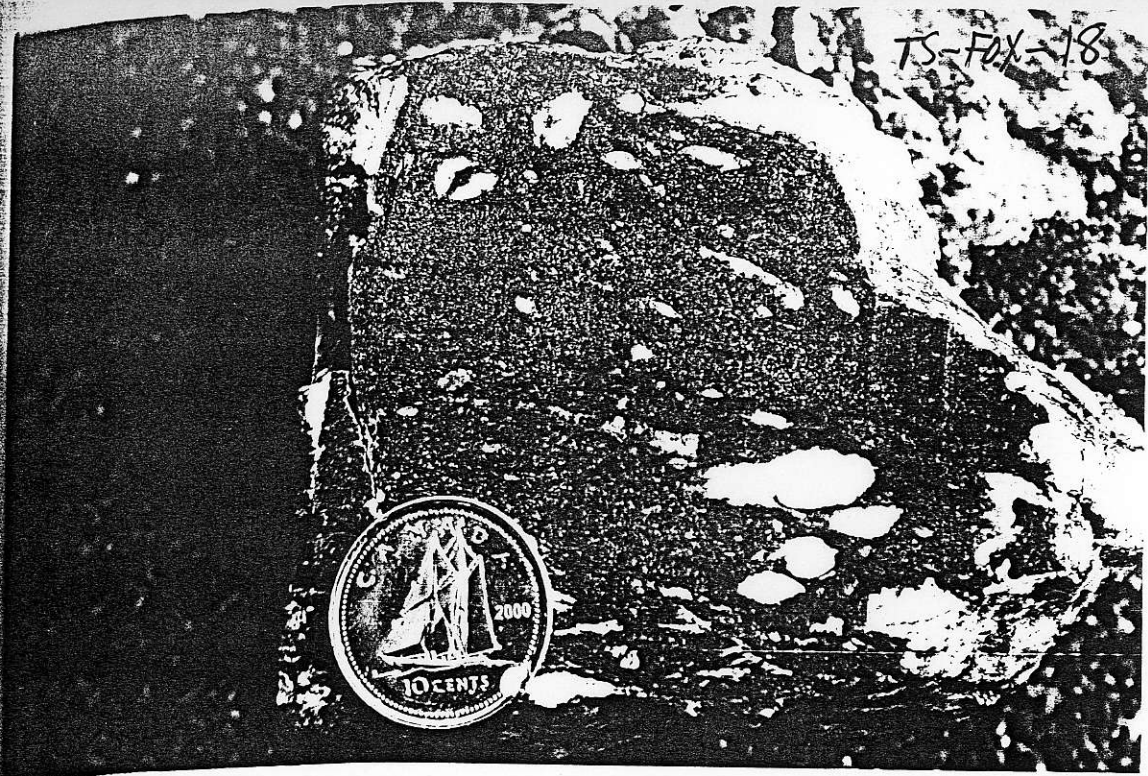
TS-Fox-5















Fox discovery on Coquihalla Highway  
north of Merritt

- found by Michael Moore
- Gerry Blackwell, Jim Mustard  
and Gerry MacArthur?
- photos by Tom Schroeter

016 NAQB ARACNNP 2 2002

(No. 5A)



Fox

Massive sulphides?

Tom's photo

CHG. I

A

035 N908 R992 N994 1 0003



Fox

clots of deformed gtz  
in massive sulphides

019 NA08B A9A2 NNNT 2 2803

<No. 15>