

modified after Struick (1988)

Figure 6. Regional Geology of Barkerville Subterrane

LEGEND

- mainly Hardscrabble Mtn. succession
- Downey succession
- mainly Harvey Ridge succession
- lower Snowshoe Group
- fault
- thrust fault
- fold

INTERNATIONAL WAYSIDE GOLD MINES LTD.

CARIBOO GOLD PROJECT

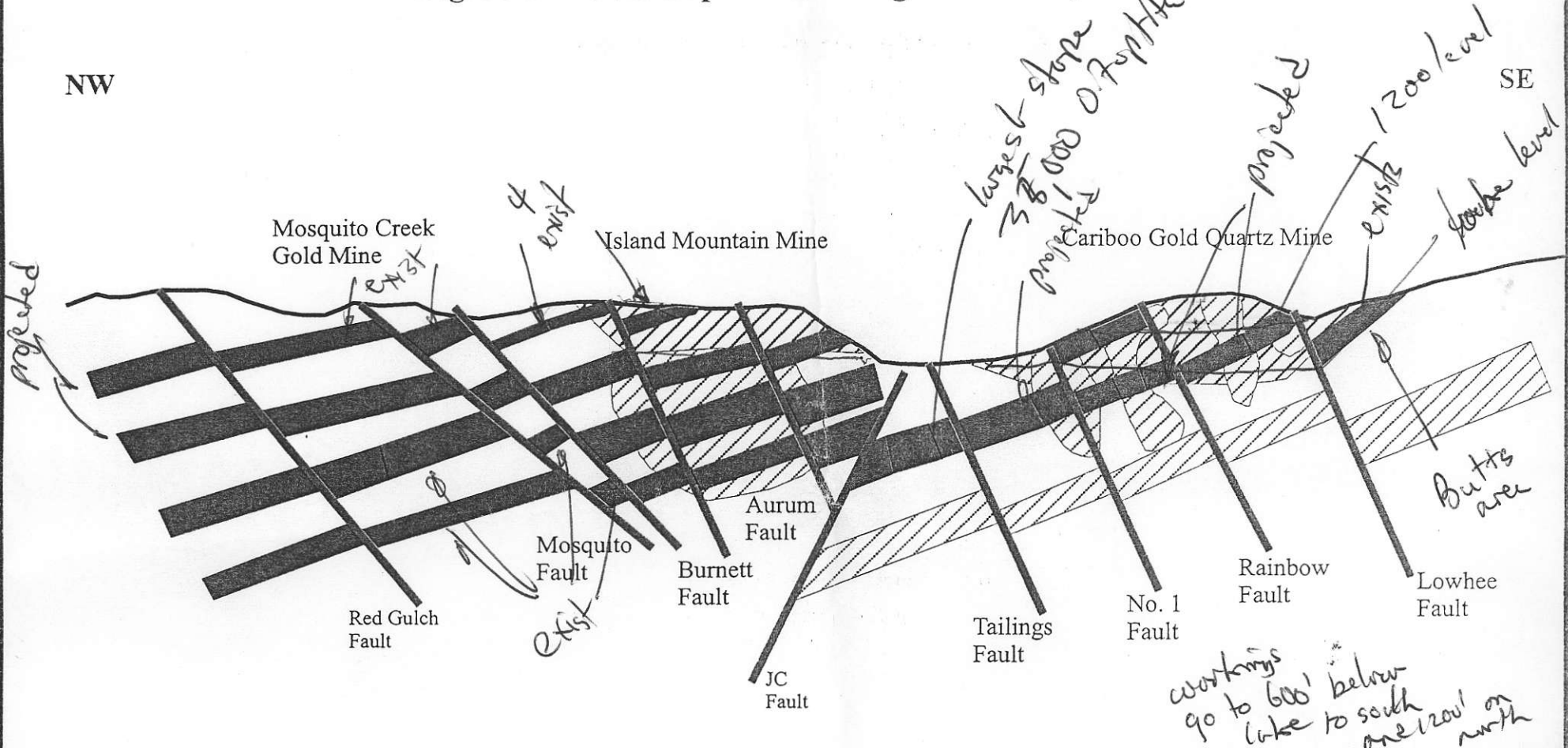


NTS: 93 H; A CARIBOO MINING DIVISION
R.D. Hall, Ph.D., P. Eng. Date: Jan 1999

Fig. 6

676869

Figure 1 Gold Exploration Targets at Wells, B.C.



- Mined areas Pyrite-type ore
375,000 ounces
- Unmined projected part in mineralized plane.
- Inferred Target in mineralized plane.
- Mined area of Quartz vein-type ore
855,000 ounces
- Potential Open pit target

International Wayside Gold Mines Ltd.

Cariboo Gold Project

Section Bearing 224°

S. Dykes

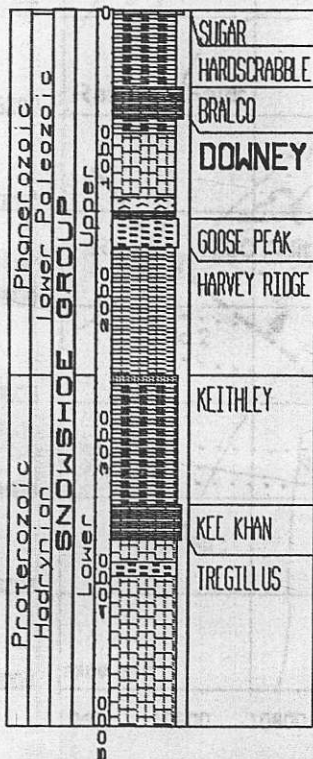
0 1000 2000 3000

Scale in Feet

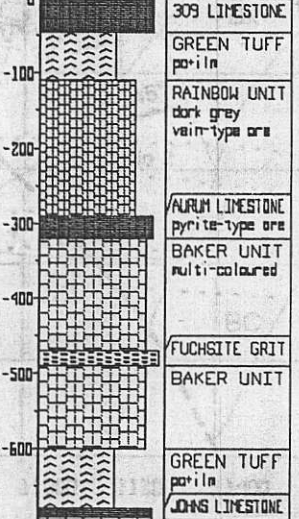
Figure

1

BARKERVILLE SUBTERRANE

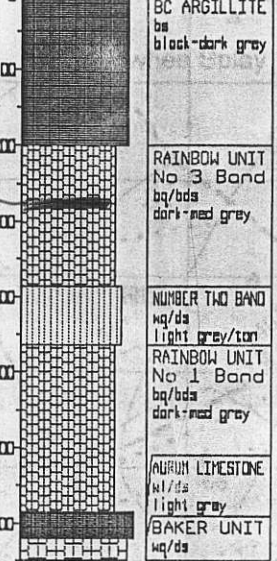


JUKES ADIT

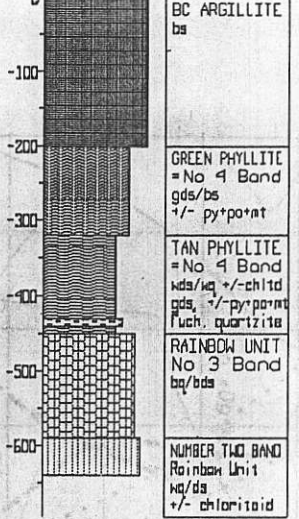


ten unit

1500L-201XCUT



PINKERTON



(old)

BC VEIN

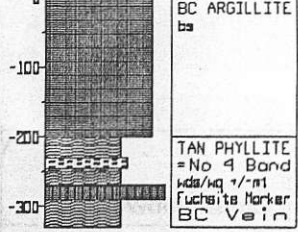


Figure 7. Schematic Stratigraphy of the Mine Section

LEGEND

- b dark grey
- w light grey
- g green
- d dolomitic
- q quartzite
- s siltstone
- l limestone
- py pyrite
- po pyrrhotite
- mt magnetite
- ilm ilmenite
- bedding
- cleavage
- lineation

INTERNATIONAL WAYSIDE GOLD MINES LTD.

CARIBOO GOLD PROJECT

scale as shown in feet

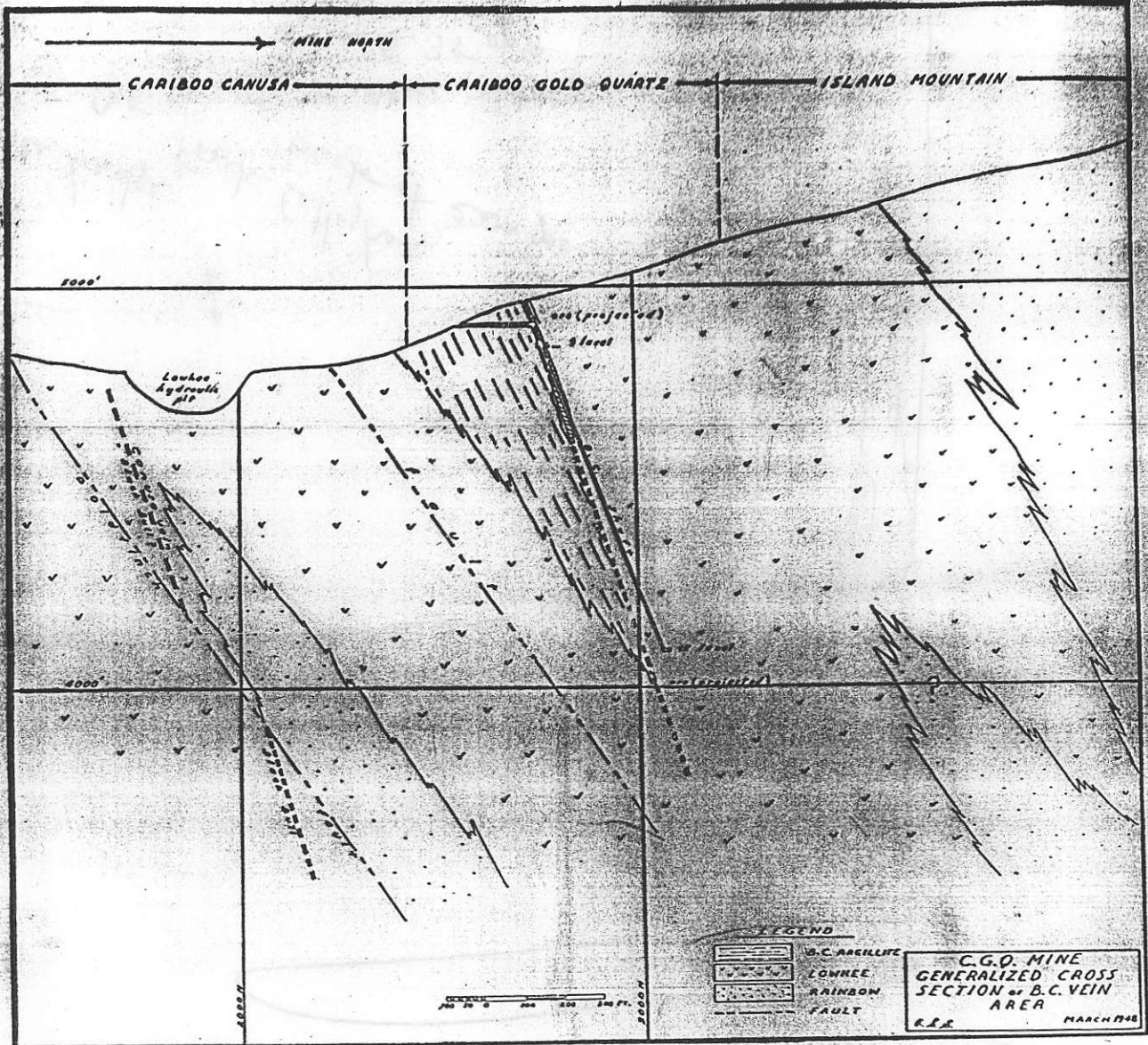
N.T.S.: 93 H/4E

CARIBOO MINING DIVISION

R.D. Hall, Ph.D., P. Eng.

Date: Jan 1999

Fig. 7



after Skerl (1948)

INTERNATIONAL WAYSIDE		
CARIBOO GOLD PROJECT		
SECTION B.C. VEIN		
PROJECT	DRAWN	FIGURE
NTS	DATE 97	15
R.D. HALL, Ph.D., P.Eng.		

RD HALL B'D B'D		
NO.	DATE	12
PROJECT	DRYING	FIGURE

RB

Baker =

Im.



Bomanza Ledge
 Front Callaghan
 back of envelope
 0.5 m or - new zone
 ~ 0.35 opt

