



Bag 5000, Smithers, B. C. V0J 2N0

To: V.A. Preto, Don MacIntyre

093L022
Date: June 10, 1986

Our File:

FROM: D.V. Lefebure

RE: Property Visit to Dome Mountain; Property of Canadian-United
Minerals Inc.; 093LE022

Introduction

On May 27, 1986 Tom Schroeter, Bryan Good and I visited the Dome Mountain property of Canadian-United Minerals Inc. to examine the drilling program in progress. The following Monday I examined some of Canadian-United's core with Gordon Leask, Project Geologist. The core is stored in Smithers and should be examined by the MDA mappers.

Location & Access

Dome Mountain is located 35 km east of Smithers in the Babine Range (Figure 1). Gravel and dirt roads from Smithers provide ready access to the Dome Mountain property via the Babine Lake and Chapman Lake Forest Service roads. At this time of year the dirt roads on the property are virtually impassable because of the mud.

Claims

The mineral rights are held in two groups of claims, Dome North and Forks (Figure 2). Dome North Group (100 units) was optioned by Noranda from A. & J. L'Orsa, K. Coswan, and W. McGowan and the Forks Group (93 units) from Reako Explorations Ltd. and Panther Mines Ltd. Noranda joint ventured the Dome Mountain property with Canadian-United Minerals Inc. early in 1985. On December 10, 1985 Canadian-United Minerals granted Teeshin Resources Ltd. an option to acquire a 75% interest by spending \$1,250,000 in 1986 and 1987 and putting the property into production by December 1988.

Apparently Canadian-United Minerals has just signed an agreement covering the Repeater 2, Luki and Dome A claims with Reako Explorations Ltd. and Panther Mines Ltd.

Regional & Local Geology

Refer to reports by MacIntyre (1984) and Meyers (1984) and Meyers (1985).

To: V. Preto, Don MacIntyre
From: D. Lefebure
Re: Dome Mountain

Work in Progress

In May Canadian-United Minerals Inc. drilled 8 holes to test the Boulder Vein (Figure 3) which strikes east and dips 45 to 50° south. These holes were spotted to test the vein down dip and along strike (east) from the January drilling (Schroeter Monthly Report, January 1986). The deepest hole to date is 800' (244 m.) and Gordon Leask's impression was that no significant intersections were found below ~250' (76 m.) down dip. Teeshin Resources Ltd. claims reserves of 400,000 tons of 0.5 oz. Au/T (Press Release, May 9, 1986).

Confidential

Current company plans are to resume drilling in July to test the Boulder Vein to the west towards the Cabin Vein and the Free Gold Showing. A new 5% grade road is propped for access to the proposed 1,000' adit near Boulder Creek (86-Roll 2-12). Underground exploration is planned with 1,000' of drifting and 10,000' of drilling.

Conclusions

1. Major exploration program in progress with a number of significant Au-rich intersections.
2. Dome Mountain MDA project members should plan to log representative holes from Forks and Boulder Veins. Discussed with D. MacIntyre.
3. No strong evidence presented for stratabound control on gold mineralization.

<u>Samples</u>	DDH F85-6	BQ 32° -50°	Forks Showing
----------------	-----------	-------------	---------------

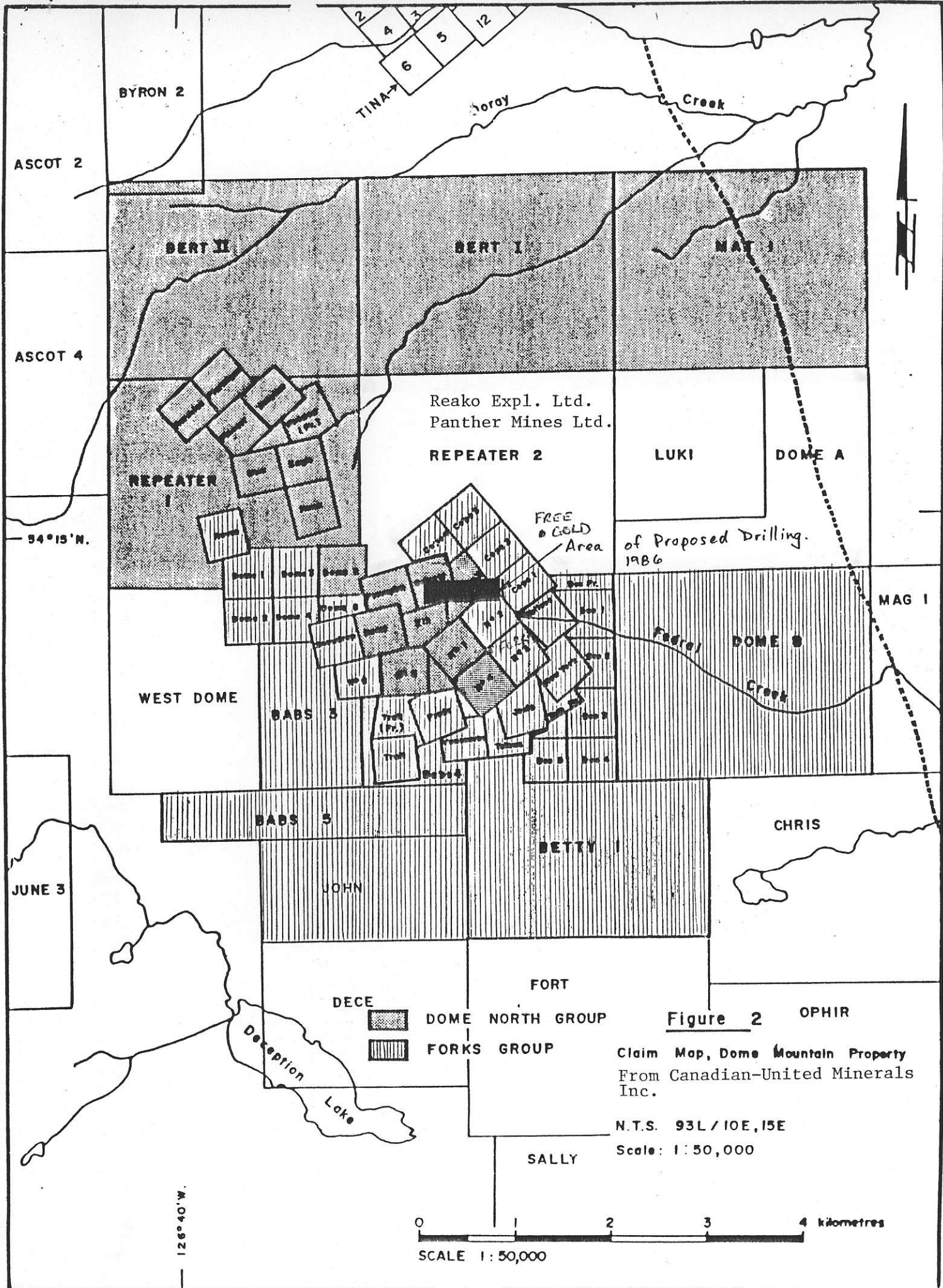
- | | |
|----------|--|
| DVL-86-6 | - fractured pyrite (<15%) grains gray and white tuffaceous matrix, possible light coloured rounded fragments
- sample cut for assay - 21.02 - 22 m. contains 0.34 gmt Au, 12.3 gmt Ag, 0.02 % Cu, 0.32% Pb, and 0.50% Zn (Noranda Assess. Report #13,827) |
| DVL-86-7 | - 32 m. - purple bedded volcanic siltstone, sandstone and conglomerate with matrix-supported clasts
- clasts elongate, angular, principally feldspar phyrlic andesite
- patches of white and light green secondary minerals
- bedding to core angle 75° |
| DVL-86-8 | - 34.2 m. - altered purple lapilli-tuff, tiny veinlets of sericite throughout with discreet patches of dark green mica (fuchsite?) and patches of white quartz, minor reaction to HCl, moderate/weak foliation. |

To: V. Preto, D. MacIntyre
From: D. Lefebure
Re: Dome Mountain

DVL-86-9 - 64.9 m. - similar to 86-7 but larger fragments, up to
15 cm

Photographs 86-Roll 2-11 to 24

David Lefebure



Reako Expl. Ltd.
Panther Mines Ltd.

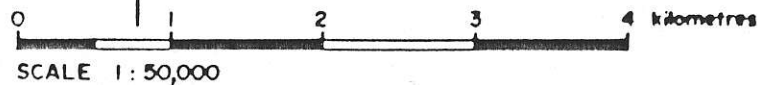
of Proposed Drilling.
1986

FREE & GOLD
Area

Figure 2 OPHIR

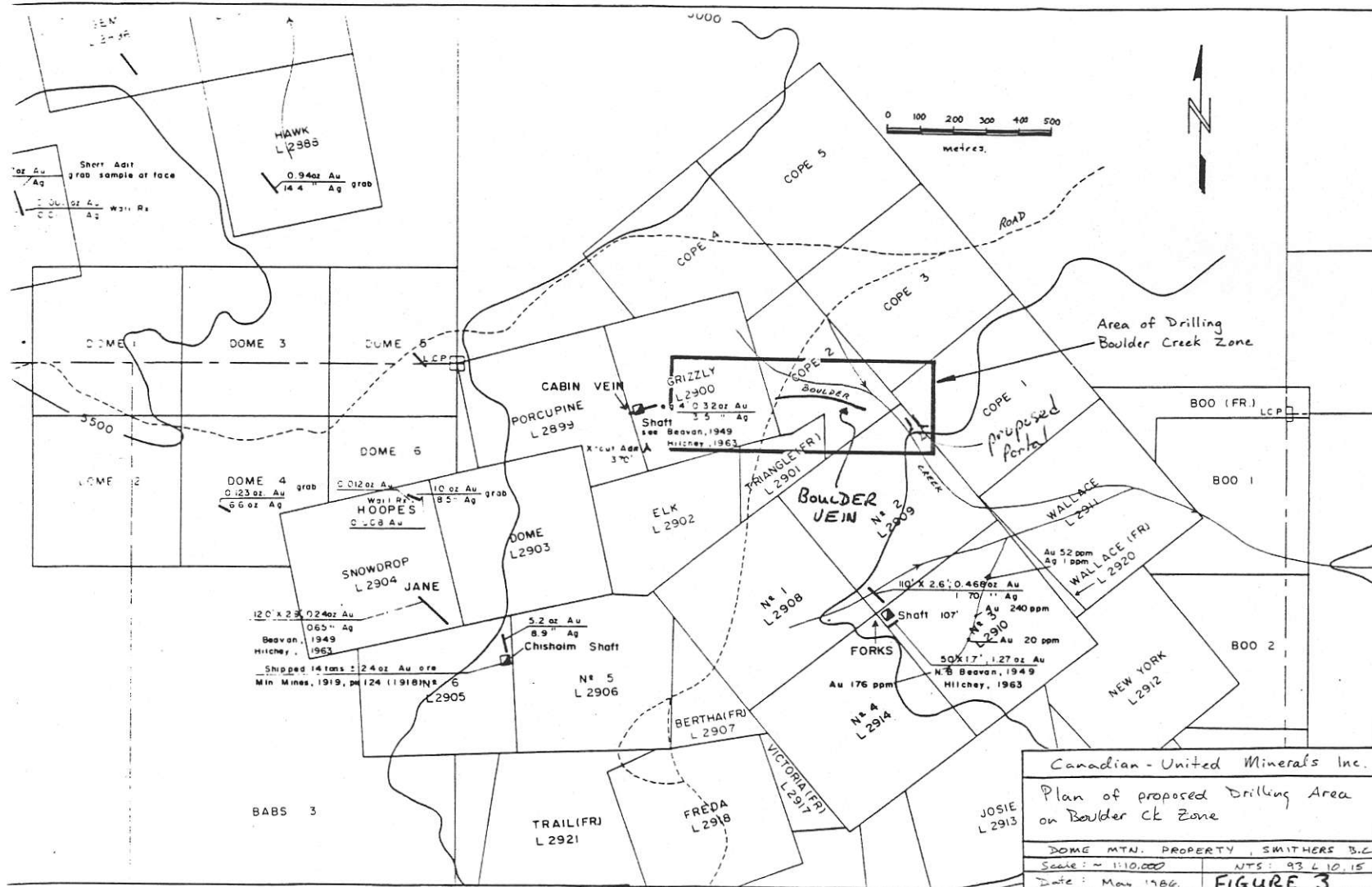
Claim Map, Dome Mountain Property
From Canadian-United Minerals
Inc.

N.T.S. 93L/10E,15E
Scale: 1:50,000



126°40'W.

94°15'N.





86-Roll 2-11 Tom's found an old core shack southeast of Free Gold showing; core badly disrupted.



86-Roll 2-12 Coil stove and pump on Boulder Creek.
Proposed portal location for adit by
Canadian-United Minerals Ltd.



86-Roll 2-13 J.T. Thomas drill coring hole T-86-51,
the last hole of the current program.



86-Roll 2-16 Core from T-86-51 showing multiple quartz veins cutting a purple andesite breccia.



86-Roll 2-18 Snow-covered trench uphill from drill is surface exposure of Boulder Creek quartz vein.



86-Roll 2-21 Looking south towards Forks headframe.



86-Roll 2-22 Another view of the headframe with the snow-covered dump in the foreground. Noranda's 1985 ddh core stored beneath the 2" x 4" plank in foreground.



86-Roll 2-23 Strongly foliated volcaniclastic rock northwest of shaft on road. Location of sample DVL-86-6.



86-Roll 2-24 Noranda core for holes 1985-1 to 6. Holes drilled around Fordh Shaft.