

INTERNATIONAL SKYLINE GOLD CORPORATION

**EXPLORING BRITISH COLUMBIA
AND THE WORLD**

UPDATE ON:

BRONSON SLOPE PORPHYRY GOLD, COPPER PROJECT

BEAR LAKE PORPHYRY COPPER, MOLYBDENUM PROJECT

KENT PORPHYRY COPPER PROJECT

INDONESIAN (IRIAN JAYA) PROJECT

JANUARY, 1997

1.0 BRONSON SLOPE PORPHYRY GOLD, COPPER PROJECT

1.1 Location

- In the Iskut River region of northwestern British Columbia, Canada.
- Approximately 975 kilometres northwest of Vancouver, B. C.

1.2 Description

- Porphyry gold, copper deposit with recoverable silver, molybdenum and magnetite.
- 56 holes drilled comprising 10,318 metres.
- Total measured and indicated in-situ resource greater than US\$6.00 NSR is 74.5 million metric tonnes containing an average of 0.56 grams gold/tonne, 0.20% copper and 2.67 grams silver/tonne.
- NSR value contained in this resource is US\$678 million (CDN\$904 million) or an average of US\$9.10 (CDN\$12.13) per metric tonne.
- A further 23.4 million tonnes of similarly mineralized material (NSR US\$9.66) is classified as inferred. Undrilled geologic potential exists for an additional 80 million tonnes at similar grades.

1.3 Mine Plan

- Deposit is mineable by open cut methods utilising in pit crushing, in pit conveyors, ore pass to the valley bottom, and gravity conveyor system to the concentrator.
- 12,000 tonne per day concentrator planned using gravity and froth flotation recovery.
- Metallurgical testing indicates 90% recovery of gold and copper.
- Projected capital costs = CDN\$130 million
- Projected operating costs = CDN\$5.80/tonne ore

1.4 Infrastructure Requirements

- 31 kilometre extension of Iskut River road to Cassiar Stewart highway.
- 20 megawatt run of river hydro electric power plant on Iskut River canyon.
- Relocation of Johnny Mountain camp.

1.5 Permitting

- Environmental Assessment baseline study nearing completion and Project Report in preparation.
- Feasibility study and project report targeted for April, 1997.

2.0 BEAR LAKE PORPHYRY COPPER, MOLYBDENUM PROJECT

2.1 Location

- Central British Columbia, 150 kilometres north of Smithers, B.C.
- 5 kilometres west of B.C. Rail line at Bear Lake.
- Logging roads within 28 kilometres.

2.2 Description

- Granitic hosted copper, molybdenum porphyry deposit.
- 14 holes drilled comprising 2,028 metres.
- The following table highlights the holes drilled in the deposit showing grades equal to or better than comparable porphyry deposits in past or present production in B.C.:

Hole No.	From m.	To m.	Length m.	Copper %	Molybdenum %
3	9.8	153.0	143.2	0.23	0.05
4	5.8	153.3	147.5	0.19	0.035
8	30.5	192.3	161.8	0.27	0.061
14	4.0	125.0	121.0	0.32	0.089

2.3 Potential

- Mineralised trend is open in several dimensions and to depth with sufficient tonnage potential to warrant aggressive exploration.
- Physiography is amenable to access road construction, low strip ratio mining, and low cost open cut - ore pass mining method.
- Molybdenum market predictions for the foreseeable future are extremely optimistic.

3.0 KENT PORPHYRY COPPER PROJECT

3.1 Summary

- Volcanic hosted porphyry system located at margin of Guichon Batholith near Highland Valley region.
- Coincident geochemical and geophysical anomalies in area of propylitic and argillic alteration.
- Copper and gold bearing float occurrences.
- Near highway and power infrastructure.

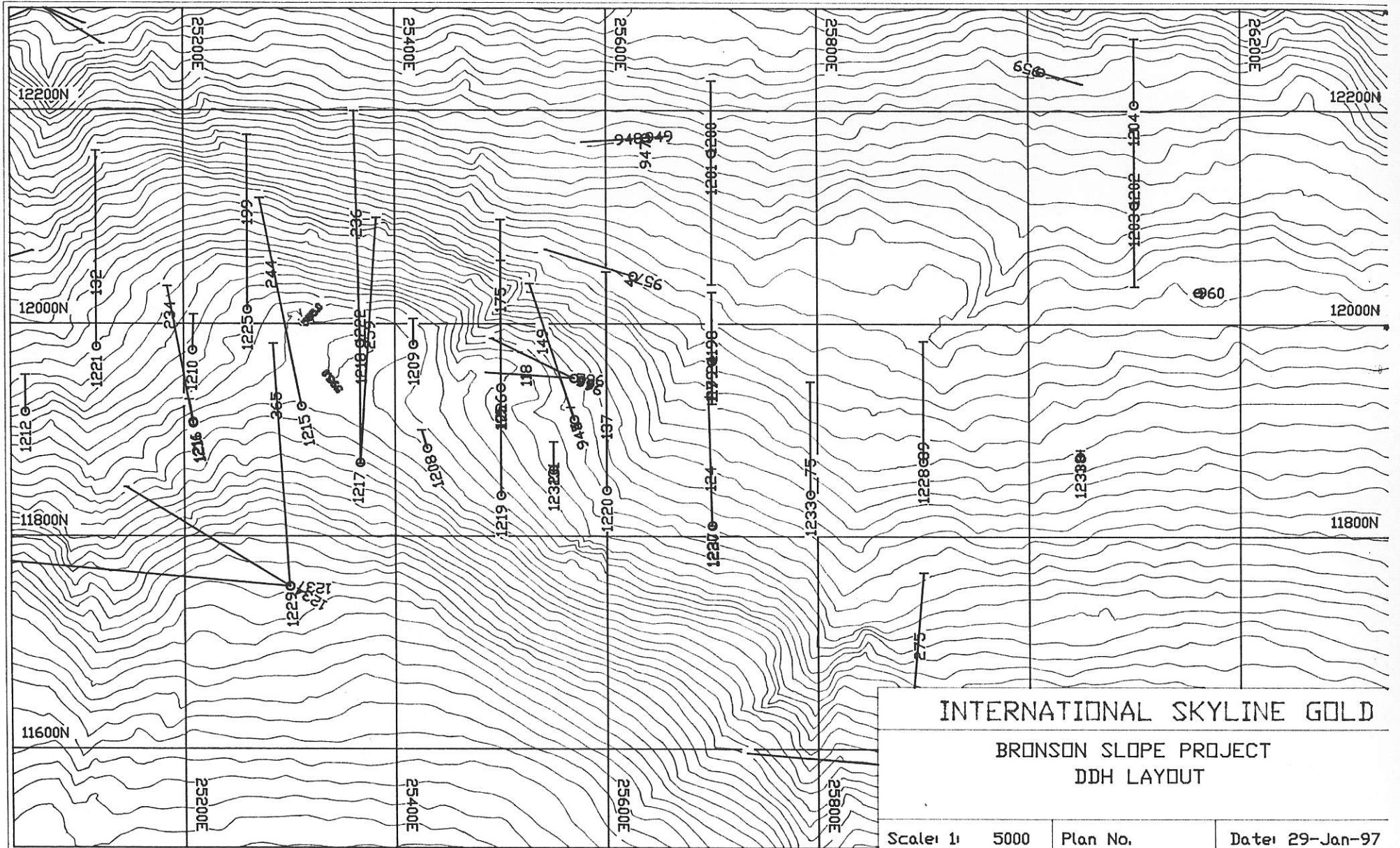
4.0 INDONESIA (IRIAN JAYA) PROJECT

4.1 Summary

- Through corporate reorganisation, the company has created a new vehicle, **Iriana Resources Corporation (TSE - IR)**, with 16.2 million acres of premium mineral tenure on the Indonesian side of the island of New Guinea (Irian Jaya Province).
- All exploration work is farmed out to the major companies Barrick Gold, Battle Mountain Gold and Cyprus Amax.
- Combined exploration budgets for 1997 = US\$17 million.
- This is probably the first completed acquisition of secure, significant mineral tenure by a North American junior in Indonesia.

5.0 FUTURE OUTLOOK

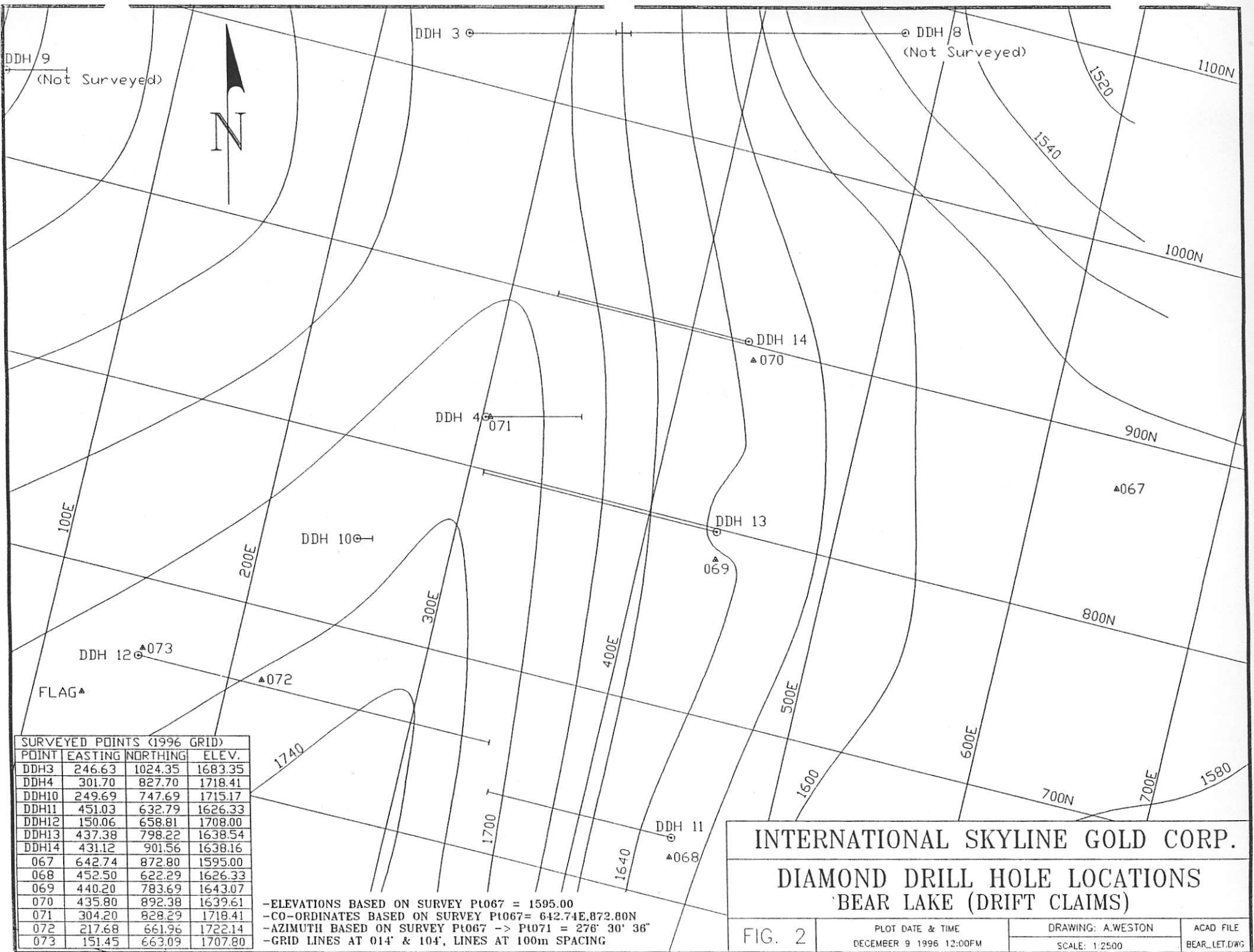
- **The company will continue its plan to place the Bronson Slope gold deposit into production.**
- **The company is continuing its policy of aggressive acquisition of quality exploration and production targets.**



INTERNATIONAL SKYLINE GOLD

BRONSON SLOPE PROJECT
DDH LAYOUT

Scale: 1: 5000 Plan No. Date: 29-Jan-97



DDH 9
(Not Surveyed)



DDH 3

DDH 8
(Not Surveyed)

1520

1100N

1540

1000N

DDH 14
▲070

DDH 4
▲071

900N

▲067

DDH 10

DDH 13
▲069

800N

100E

200E

300E

400E

500E

DDH 12
▲073

FLAG

▲072

1600

600E

700N

700E

1580

1700

DDH 11
▲068

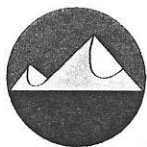
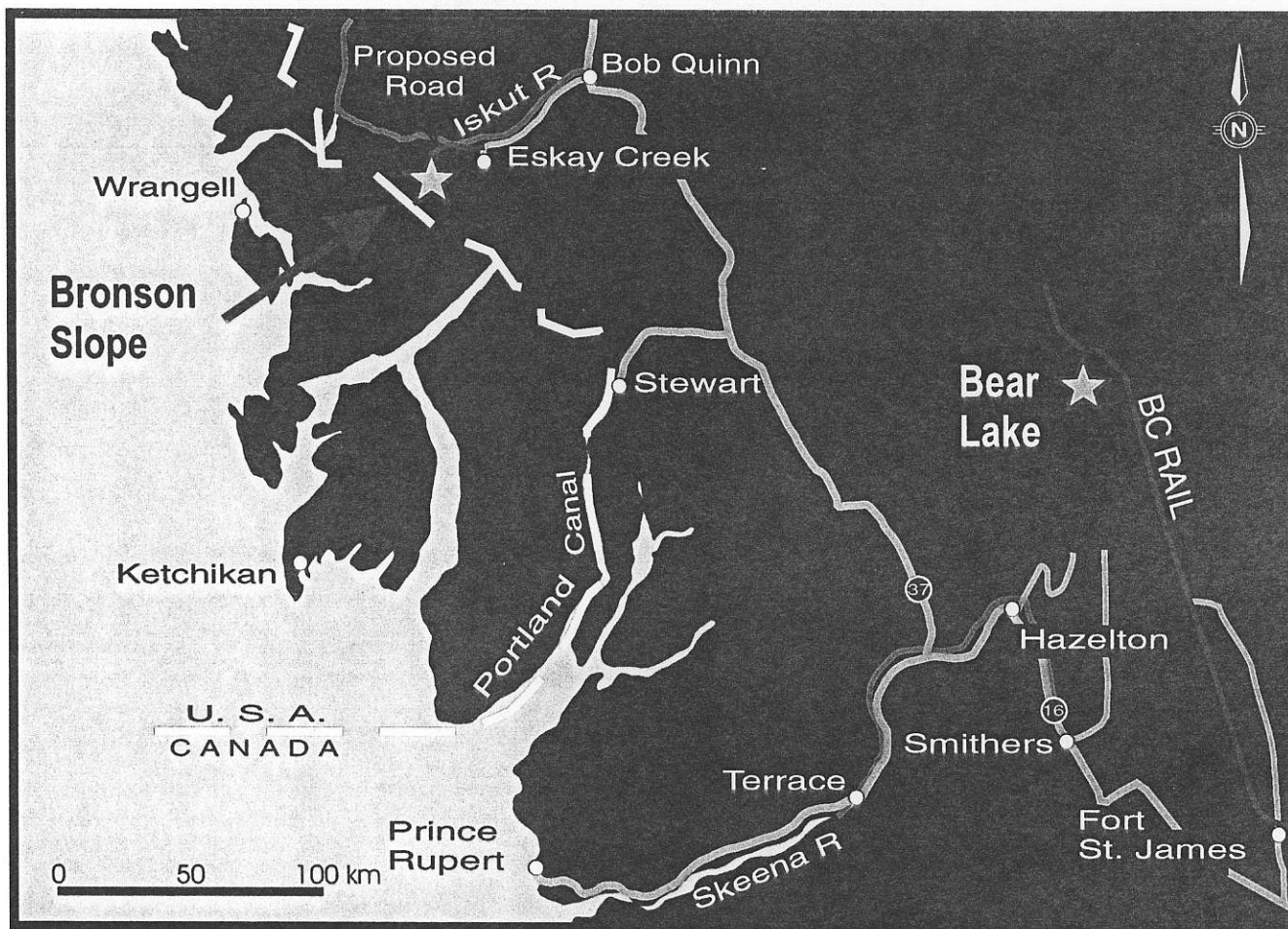
1640

SURVEYED POINTS (1996 GRID)			
POINT	EASTING	NORTHING	ELEV.
DDH3	246.63	1024.35	1683.35
DDH4	301.70	827.70	1718.41
DDH10	249.69	747.69	1715.17
DDH11	451.03	632.79	1626.33
DDH12	150.06	658.81	1708.00
DDH13	437.38	798.22	1638.54
DDH14	431.12	901.56	1638.16
067	642.74	872.80	1595.00
068	452.50	622.29	1626.33
069	440.20	783.69	1643.07
070	435.80	892.38	1639.61
071	304.20	828.29	1718.41
072	217.68	661.96	1722.14
073	151.45	663.09	1707.80

-ELEVATIONS BASED ON SURVEY Pt067 = 1595.00
 -CO-ORDINATES BASED ON SURVEY Pt067 = 642.74E, 872.80N
 -AZIMUTH BASED ON SURVEY Pt067 -> Pt071 = 276° 30' 36"
 -GRID LINES AT 014' & 104', LINES AT 100m SPACING

INTERNATIONAL SKYLINE GOLD CORP.		
DIAMOND DRILL HOLE LOCATIONS 'BEAR LAKE (DRIFT CLAIMS)		
FIG. 2	PLOT DATE & TIME DECEMBER 9 1996 12:00PM	DRAWING: A.WESTON
	SCALE: 1:2500	ACAD FILE BEAR_LET.DWG

REGIONAL ACCESS MAP



International Skyline Gold Corporation