

Flew from Tyeek Lk to Mayfield Lk  
via Smithers Air Service

Approx 2 1/2 hrs flying time

Picked up at Lk by TWTA  
and flown to Driftpile Camp

D+J Dilling J. Schussler of Van.

2-10 hr shifts - on 10th hole

Started mid May approx 10 more  
to go. No major interest yet

Joan Carne and helper in  
camp for Screen Leaving tomorrow

JOB .....

DATE .....PAGE .....

BL

X → ○ 12 S.  
| 210m |



PARTY CHIEF .....

WEATHER .....

JOB ..... Driftpile creek .....

DATE ..... June 21, 1979 ..... PAGE .....

Recon of area W of Geophoto Ck  
DDH 79-10 located  $\approx$  10 m W of @

BL 125 inclined hole to NE  
Transfer of geol data from  
Texasgulf regional geol map  
to base maps.

Examination of drill core  
B. Ballantyne arrived in  
afternoon with assistant

Plotted location of new  
DDH's onto property map

Currently drilling hole 79-18

Went through intersection  
of massive py c sp Minor  
galena UH min zone

Peter Boyle of Texasgulf  
arrived in camp

Discussed geol of DDP and  
Rough claims (opt to Rio)

PARTY CHIEF .....

WEATHER .....  
.....



Examination of Rough claims  
with P. Boyle

Left DP camp @ 8.25

Picked up Peter Boyle and helper  
Arrived at Rough ca 8.45 (30 min  
chopper time) Traverse down  
creek examining trenches along  
sil cherty shale - 1st cont. Some  
good grade sph, min gl, py QZ  
veining and brecc common

Returned to chop ca 10.05 a.m.

Flew to ridge on E side of prop  
to begin traverse back toward  
camp. Picked up @ 4.25

STN RG 1 - 28

Helicopter time

	<u>Time</u>	<u>To Date</u>
① Move into camp	.4	0
② June 22	.8	1.2
③ June 23	.4 (1/2)	1.6
④ June 24	0	1.6
⑤ June 25	.3	1.9
⑥ June 26	.3	2.2



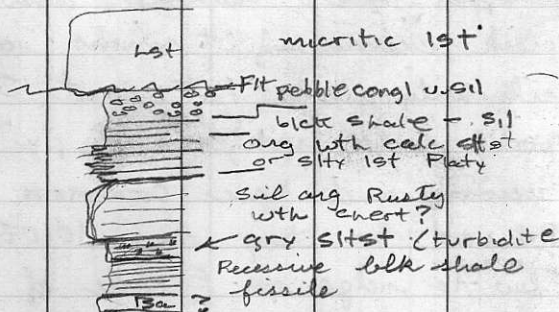
JOB .....

DATE ..... June 23, 1979 ..... PAGE .....

49 55 210

50 80 235 1165 Approx blk shale - grey  
silty shale cont

51 1148 Approx Org with sh - 1st  
cont



PARTY CHIEF .....

WEATHER .....

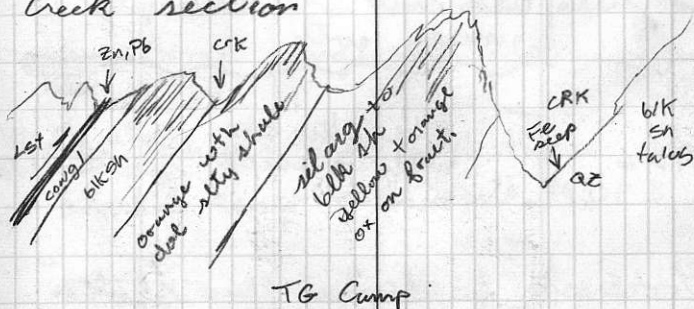


JOB Driftpile Creek

DATE June 23, 1979 PAGE .....

Continuation of traverse across  
Rough Claim. Beginning at STN 28  
left Driftpile Camp 8.12 a.m.  
Arrived at STN 28 ca 8.25 a.m.

Creek section



Completed traverse c.a. 3.00

Picked up at TG camp  
around 3.45 pm.

Split helicopter charter with  
Bruce Ballantyne of BSC



PARTY CHIEF .....

WEATHER Mixed rain & snow



DMg

blk cherty arg sil gry with

DMg6

sil baritic midst lampy baritic  
ba rosettes highly resist  
blk carb sh - mass py lenses  
ba bales

DMg

blk carb sh - mn py  
rusty with

Orr 6

blk stly sh platy brown  
with - grapt, receptaculites  
mod → high fissile

Orr 5

fissile paper thin shales

Orr 4

rhytmite (sol coal)  
arg lst flaggy, cone bed  
trail mark

Orr 3

gray tale shale qz/cal pods

Orr 2

calc sh + arg lst ribbons  
rhythmic success.

Orr ?

blk flyy lst org with  
~~xxx ZnS mal spars filled~~  
fract.

E

lst lt gry micritic lst



Tour with Rob Carne


B<sub>7</sub> unit - very fissile md sil Py cb nodules Py lam  
- rusty with silty gritty due to radiol.

Tour

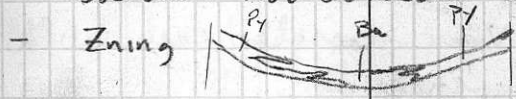
Stop 2 Talus slope. Boxwork after mass  
Py. Some anglesite float. 2 samples  
79DP 2, 2a

Stop 3 Trenched area and talus slope  
Sample of bedded barite 79DP 3

- Hw of UH V. Calc highly sheared  
with cb balls Extremely fissile Cs  
gracting upward into more sil  
beds.

- Blebby Ba =  ↑ Top graded  
upward?

- Upper Atam - algal mats, limy  
shales Not observed in area



central part of prop - mostly Ba  
less P1

- Ferrite reduces geochem resp  
along c clay lb seeds 1" thick





~~org~~  
Fenicate

DP - A Bould of sil cal  
baritic m. sulph Py sp gl



DP 6  
cherty argillite  
Ba blebs

DP - 5 (chip sample)  
chert fins blk  
graph shale  
carb nods with rem  
bed. Tect unding?

DP 6 - Rusty with sil argil  
drag cleav along folded  
bedding planes? chert  
sheared

DP 7 Very fossiliferous carb blk  
shale

JOB .....

DATE .....

June 25, 1979

PAGE .....

Helicopter tour of Galaga Lks  
area E. R. Currie B. Ballentyne  
Approx time .5 hrs (ACMM .17 hrs)

Take off 8.50 am.

Arrive Mt Alcock 9.05 a.m

Bedded barite with galena  
bearing horizons Resist with  
Prod large kill zone on  
dip slope. May be quite  
thick 50 m?



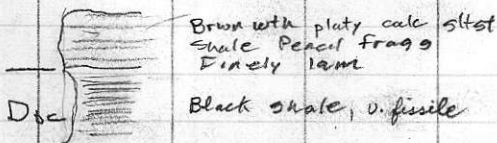
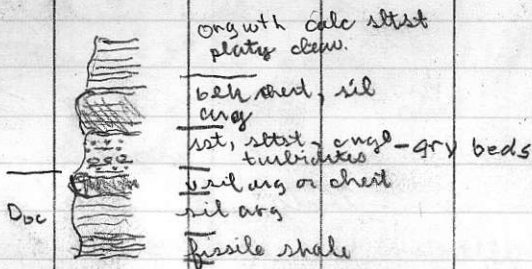
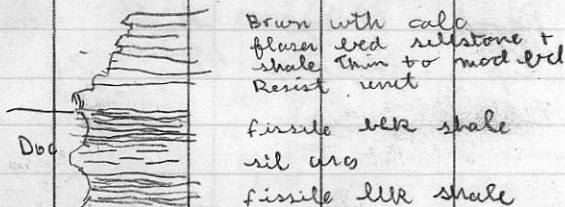
Black mod sil argillite hw  
Barite beds @ 325/35 SW  
ox flt in talus on SW slope  
also ox flt with qz gangue

PARTY CHIEF .....

WEATHER .....

Broken cloud

Traverse down ridge SW  
of camp Helicopter time  $\approx$  1 hrs  
to top of ridge  
Arrive  $\approx$  12.50  
Returned to camp 7.00 PM



JOB .....

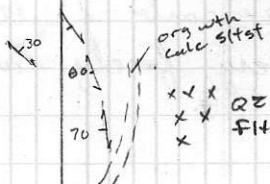
DATE .....

June 26, 1979

PAGE .....

Left Driftpile camp @ 8.50  
Set out on ridge N of  
camp at 8.55

Ridge o/c



180/225°

Packed up on ridge @ 4.30  
Return to camp Arr. 4.35

PARTY CHIEF .....

WEATHER .....

Sunny



DDH  
78-1Starts in blebby Ba in  
sil arg.Sil argillite with radiolarian  
interbeds? Scattered py laminar

Qz-carb fault zones 90-108

Very finely lam

JOB .....

DATE ..... PAGE .....

78-1 45' Radiolarian in sil argillite  
66' " " " " ?  
78' Lam sil arg.

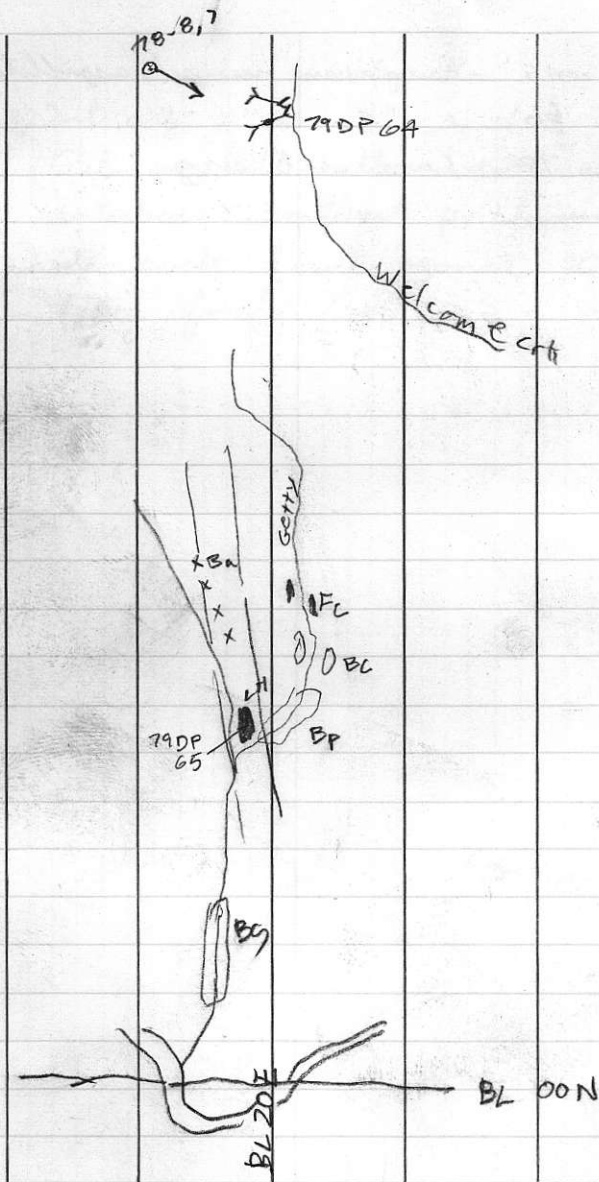
PARTY CHIEF .....

WEATHER .....



JOB .....

DATE ..... PAGE .....



PARTY CHIEF .....

WEATHER .....

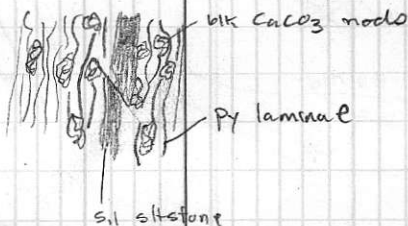


JOB ..... Driftpile Creek .....

DATE ..... June 27, 1979 ..... PAGE .....

Examination of N. Zone DDH  
78-7, 8 @ BL 20E / 42N

OK of LH in DP Creek.  $\approx$  340 / steep  
Photos of exposure in Creek



Helicopter at Muncho hk for  
repairs

PARTY CHIEF .....

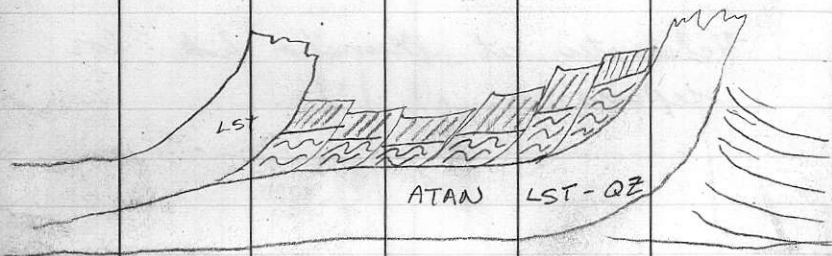
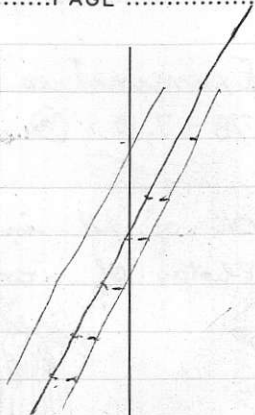
WEATHER ..... Sunny .....





JOB .....

DATE ..... PAGE .....



PARTY CHIEF .....

WEATHER .....

JOB ..... Driftpile Creek .....

DATE June 28, 1979 ..... PAGE .....

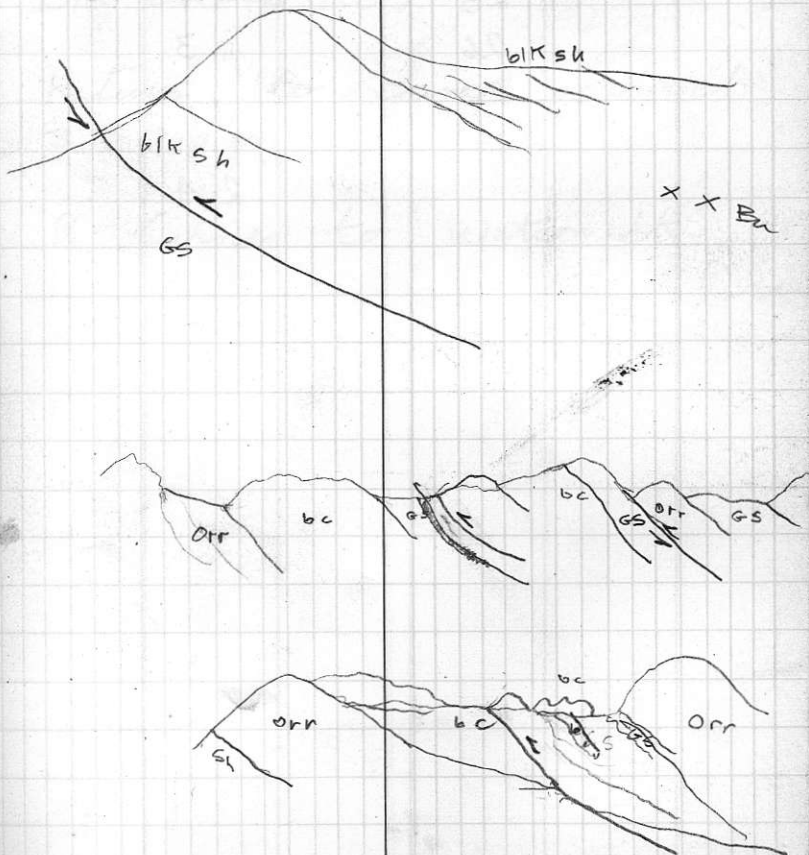
left DP camp @ 8.35 am

left out @ 8.40 am.

Ridge SE of camp

Return to camp ca 4.40 pm

Ridge S of camp



PARTY CHIEF .....

WEATHER .....



JOB .....

DATE ..... PAGE .....

Helicopter Charges

June	20	.4
	22	1.0
	23	.4
	26	.3
	28	.3
		2.4



PARTY CHIEF .....

WEATHER .....

JOB .....

DATE June 29, 1979 PAGE .....

Anticipated arrival of BB July 16, 1979  
at Pretzel Lake  
Helicopter inoperable  
Traverse up creek W of  
DP camp

Return to camp around  
3.30 p.m.

R. Carne to Watson Lk

PARTY CHIEF .....

WEATHER .....



JOB ..... Driftpile Creek .....

DATE ..... June 30, 1979 ..... PAGE .....

Heavy Rain - fresh snow  
@ 4500'

- preparation of 1:125,000  
geologic map
- rock labelling



PARTY CHIEF .....

WEATHER ..... Heavy Rain .....

JOB ..... Driftpile Creek .....

DATE ..... July 1, 1979 ..... PAGE .....

Heavy rain

- continued draughting 1:125,000  
geologic map

PARTY CHIEF .....

WEATHER ..... Heavy Rain .....



JOB .....

DATE (M) July 2, 1979 PAGE .....

Moved camp -				
Picked up at Mayfield				
Lk by Smithers Air				
beaver @ 5.00 pm				
after 7 hour wait				
Smithers soaked in				



PARTY CHIEF .....

WEATHER ..... Overcast

JOB .....

DATE ① July 3, 1979 .....

PAGE .....

Smithers

- Unpacked equipment
- Set tent up to dry
- Sorted out rock samples?
- Prepared monthly report and expense accounts

PARTY CHIEF .....

WEATHER .....





JOB .....

DATE (W) July 4, 1979 ..... PAGE .....

- Began rock descriptions  
and sorting equipment  
for Pretzel Lake camp



PARTY CHIEF .....

WEATHER .....

JOB .....

DATE (Th) July 5, 1979 PAGE .....

- Packed equipment for Pretzel hk camp
- rock sample descriptions
- purchased groceries for camp

PARTY CHIEF .....

WEATHER .....



JOB .....

DATE (F) July 16, 1979 .....

PAGE .....

- drafting 1: 25,000  
geologic map
- continued rock  
descriptions
- purchased equipment  
for camp
- filled propane  
tank.
- purchased gas for  
boat and chain saw



PARTY CHIEF .....

WEATHER .....

JOB .....

DATE .. (5,5) July 7, 8 ..... PAGE .....

Days off

PARTY CHIEF .....

WEATHER .....



JOB ..... Pretzel Lake Camp .....

DATE ..... July 11, 1979 ..... PAGE .....

- worked on 1:125,000 map for south part of Gataga Pb-Zn-Ba district
- low cloud conditions make flying difficult
- examination of core  $\bar{c}$  Charlie Jefferson + Geoff Hodgson 7:30 p.m.

- 1978

78-4 14 boxes

- 5 16 "

- 6 26 "

1979

79-1 35 - 387 [211; 198-300]

2 34 - 408 [210-300]

3 0 - 725 [444-599]

4 0 - 1183 [1600-1100]

5 0 - 1146 [756-875]



PARTY CHIEF .....

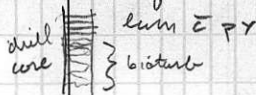
WEATHER ..... Heavy Rain .....

finely lam mudst  $\pm$  py  
 m-gr. py gl  $\pm$  sp,  $\pm$  Ba granular  
 may be detrital. Also carb  
 py interbeds - prob diagenetic  
 Also coarse py.

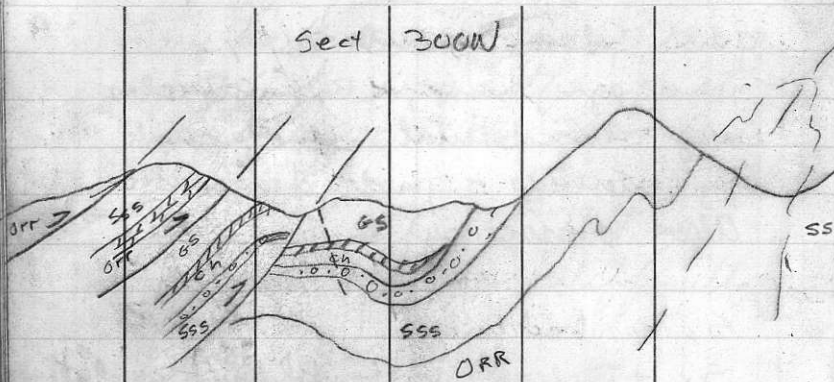
S<sub>0</sub> - bedding

S<sub>1</sub> - clew due to folding - axial plane

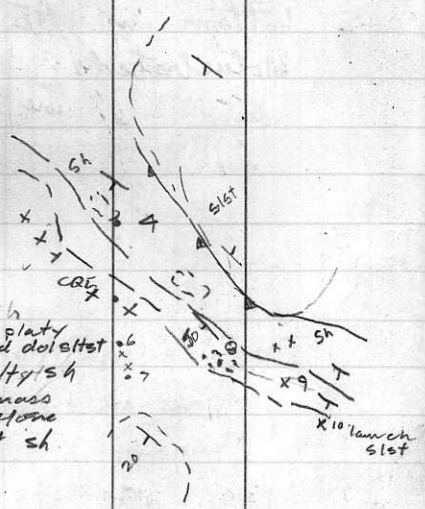
bottom of AE seq in S<sub>1</sub> slot  
 bioturbated



Sect 300W



dk gray  
 dk dolost  
 blocky with  
 qz Org with platy  
 + flaser bed dolost  
 lamcheat + silty sh  
 lt gray with mass  
 blk dolostone  
 black gray sh



JOB .....

DATE July 12, 1979 .....

PAGE .....

left camp 9:35 - arrived 9:45  
 Traverse on Carque property  
 Start traverse at upper DDH  
 1635 elev N45E/75°NE

CQ4 blk sooty shale Fossiliferous  
 Graptolites Blk st interbeds

CQ5 1780 m Mass lt to md grey  
 with sil arg or chert  
 py cubes Blocky with  
 large blocks or slabs  
 apparently overlies grapt  
 blk sh - st.

CQ6 1790 m Brown to org with  
 blocky dk grey flaser bed  
 stst Dolomitic?

CQ7 1835 Brown with platy finely  
 lam stst Py nodos common  
 Py billings worm burrows  
 Swirl struct on bedding surf.

PARTY CHIEF .....

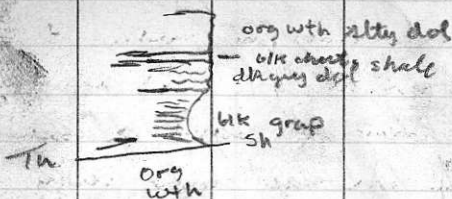
WEATHER Heavy Rain .....





CQ 8 1865 Md planar bedded  
 dk grey with dk grey  
 silty dolostone or dol siltst  
 (B) 290/55 SW apparently  
 underlies org with dol  
 siltst or mudst Worm burrows

CQ 9 2010 Mass blocky to slabby  
 lt to dk grey with silty dolostone  
 Dk grey Nodular py Md  
 bedded. Apparently underlies?  
 org with silty dol  
 Poss rel



interbed blk chert and dk  
 grey lam shale apparently  
 overlies dolostone see 9A

CQ 10 Top of ridge 2050 interbed sh + chert

PARTY CHIEF .....

WEATHER .....

Core Logging

DDH 79-1

35-100 Shale Dk grey, fissile, S.H. S<sub>1</sub>



very graph, locally calc, occasional spher  
conc. of dissem py, talcy in places,  
finely lam with crenulations of  
bedding ≡≡≡ Lt grey to cream coloured

Dsh

lam. Mod sil in places  
Somewhat decomposed.

100-104 Very finely lam py with



graph lam silty shale interbed,  
minor soft red def. Coarser grained  
secondary py appears to be  
assoc with calcite which  
locally disrupts finely lam beds  
also x-cutting veins. Dissem  
py lam in siltst or mudst. Ba?

DPT

104-107 Dk grey lam silty shale



or mudstone Few lam of  
v. f. gr py and granular py  
l.

Dss

107-108 V. f. gr lam py (see 100-104)

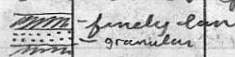
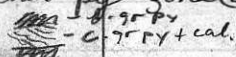
108-111 lam silty shale or siltst  
bed ⊥ to core axis

Dss

PARTY CHIEF .....

WEATHER ..... Rain / Fog .....



DPY 111 - 112	lam py ± stly shale interbeds
112 - 118	lam dk gry silty shale or siltstone. Fairly mass. Some lam py interbeds
DSS	
118 - 121	Finely lam py. with sec carb py nodules + veins local struct in py lam micro faults. Soft sed
DPY	
Dsl 121 - 124	Dk gry lam siltst
124 - 129	Finely lam py with siltst interbeds. Granular py beds  Graph partings Calcite py horizons @ 127 qz filled tension gash <sup>or</sup> siltst Py in qz. Py cubic in places
Dpy	
129 - 145	Shale Dk gry to black Fissile. Graphitic partings S // S <sub>1</sub> ? Few gross py laminar Crumblly core Thin py zone @ 140 May be x lam  - C. 75 PY + cal.
Dsh	
145 - 151	Finely lam py, alt w/ qz and m. qz granular lam. Sec cal nodules and vults Felt gauge 166?
DPY	
151 - 192	Dk gry siltst or silty shale

DSS




PARTY CHIEF .....

WEATHER .....

Locally finely lam. Few py lam. Some  
dissem py. Mod siliceous. Graph partings.

192-195 Lt grey siliceous v. finely lam  
siltstone. Cut by qz filled tension

D51 gashes. Tr. gl in qz. Tension gashes  
⊥ to lam. Siltst bounded by  
soft v. graph fault gouge?  Harry  
siltst

Overlies mass sulph zone  
Lam irregular Fraser bed?

195-196 Mass gran py c interstitial

Dpy galena gl increases down to 196  
May be detrital

196-299 Bedded barite with granular  
and laminated pyrite zones

Galena interstitial to barite and  
inherbed c granular pyrite

Bedding in barite irregular

D6a non planar wavy to lenticular  
May be biolubated in places

Coarse white barite disrupts  
bedding - Granular py/gl 217-222

Coarse gl around 256 Blk graph sh @ 272

Lumpy around 279. 295-299 mostly  
bedded barite

- 299 - 377 Shale Dk gry - black. Graphitic  
Soft. Fissile. Locally decomposed  
Few sbl interbeds. Few py lam  
Some white barite laminae
- 377 - 380 Sil arg or chert. Dk to med  
gry. Tension gashes common  
Some graph partings. Cal in tension  
gashes. Silty appearing. Locally brecc.
- 380 - 387 Same as 299 - 377 End of hole

DDH 79-4

- 36 - 69 alt dark med. Lt sil arg  
and siltst Banded. Numerous qz  
filled tension gashes Some py  
in qz Graph partings
- 69 - 76 Dk gry stly shale or siltst  
~~the~~ Sil + non sil graph partings  
(soft nonz) some py - carb rods (small)  
Calc
- 76 - 168 M. gry finely lam siltst  
Qz tension gashes. Mod sil  
Calcareous. Qz @ 88, 100, 104, 126  
Graph partings Dk gry banded  
siliceous interbeds Chert?  
Laminar bedding

PARTY CHIEF .....

WEATHER .....

- Varies from dk grey sil weakly calc to grey very calcareous. Banded to finely lam.  
 Few graph partings. Tension gashes in dk cherty horizons. Competent rock.  
 Turbidite sequences alt dark and light bands. Few granular py lam.
- 161-172 Brecciated zone. Calcite veining. Graph.
- 172-207 Dk to med grey calc stst  
 Graph shale interbeds  
 Calcite filling tension gashes.  
 Banded. Locally granular py lam  
 around 195 Wkly sil to non sil
- 207-212 graph shale. Fossiliferous carb veins. Calcareous in places
- 212-221 Dk grey v finely lam stst  
 Planar bed. Graph partings  
 Bed @ 45° to core to // to core  
 Dissem py. Calcareous Wkly to med sil.
- 221-254 Dk grey stst Pyritic Very fine py lam or pinches. Lam is very subtle. Calcareous Dissem py

- 299 - 377 Shale Dk gry - black. Graphitic  
Soft. Fissile. Locally decomposed  
Few sil interbeds. Few py lam  
Some white barite laminae
- 377 - 380 Sil arg or chert. Dk to med  
gry. Tension gashes common  
Some graph partings. Cal in tension  
gashes. Silty appearing. Locally brecc.
- 380 - 387 Same as 299 - 377 End of hole

DDH 79-4

- 36 - 69 alt dark and. Lt sil arg  
and siltst Banded. Numerous qz  
filled tension gashes Some py  
in qz Graph partings
- 69 - 76 Dk gry silty shale or siltst  
~~the~~ Sil + non sil Graph partings  
(soft nonz) Calc) Some py - carb rods (small)
- 76 - 168 M. gry finely lam siltst  
Qz tension gashes. Mod sil  
Calcareous. Qz @ 88, 100, 104, 126  
Graph partings Dk gry banded  
siliceous interbeds Chert?  
Laminar bedding

159,-

- Varies from dk grey sil weakly calc to grey very calcareous. Banded to finely lam. Few graph partings. Tension gashes in dk cherty horizons. Competent rock.
- Turbidite sequences alt dark and light bands. Few granular py lam.
- 161-172 Brecciated zone. Calcite veining, graph.
- 172-207 Dk to med grey calc stst graph shale interbeds. Calcite filling tension gashes. Banded. Locally granular py lam around 195. Wkly sil to non sil.
- 207-212 graph shale. Fossiliferous carb veins. Calcareous in places.
- 212-221 Dk grey v finely lam stst planar bed. Graph partings. Bed @ 45° to core to // to core. Dissem py. Calcareous. Wkly to med sil.
- 221-254 Dk grey stst Pyritic. Very fine py lam or pinches. Lam is very subtle. Calcareous. Dissem py.

PARTY CHIEF .....

WEATHER .....



Cal lam and small lenses Cal filling  
 tension gashes.  $\left. \begin{array}{l} \text{---} \\ \text{---} \\ \text{---} \end{array} \right| \begin{array}{l} \text{---} \\ \text{---} \\ \text{---} \end{array}$  <sup>cal.</sup> locally  
 lam and banding present.

So at oblique angle to S. Mod to  
 very siliceous Cal filled gashes  
 at 246. Very finely lam.  $\approx$  265  
 Qz @ 305, 313, 321, 332

354-369 Soft ground up core Calc.

369- Dk grey mudst. Very siliceous  
 Calcareous Cal + qz filled gashes  
 Finely lam in places Comp  
 TX Some graph partings  
 Cal micro vnlts

386

JOB ..... Pretzel Lake Camp .....

DATE ..... July 14, 1979 ..... PAGE .....

low ceiling until 1.00 pm.  
Chopper assigned to drill more

PARTY CHIEF .....

WEATHER .....



JOB ..... Cirque .....

DATE ..... July 15 ..... PAGE .....

Early morning fog → broken cloud  
left camp @ 9.45  
Traverse W of Cirque claims

STW 12

20m  
sect

12F  
12E  
12D  
12C  
  
12B x  
12A x



brown to arg with Fraser bed calc stst  
platy calc lam sst - locally v fissile  
lam x lam calc lt brown with sst + sst  
turbidite seq  
blk chert + shale  
lt gry lam lst  
calc and blk chert lam band E slump struct

gry with mass granular lst

turbidite sequence



chert + argillite

12A x lst

dk gry shale parting  
lam platy calc sst  
blocky dk gry mass sst (calc)  
py cubes

\* lst includes thin up sect

left camp @ 10.40 am.  
Arrive Mt Yuen ≈ 10.50 a.m.

Picture towards NW

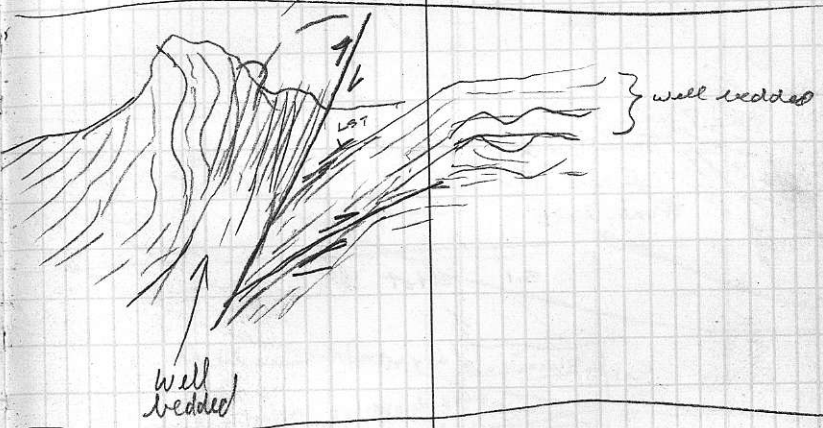
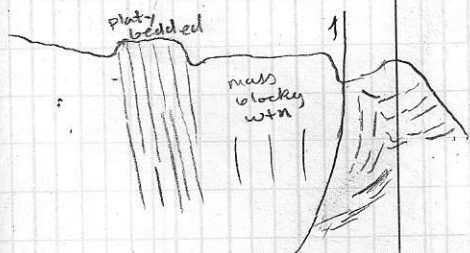


Photo Sta 6. Looking east



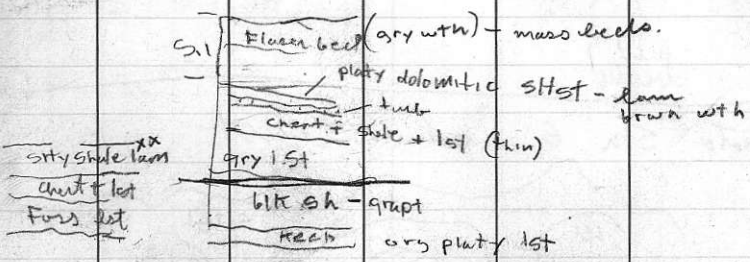
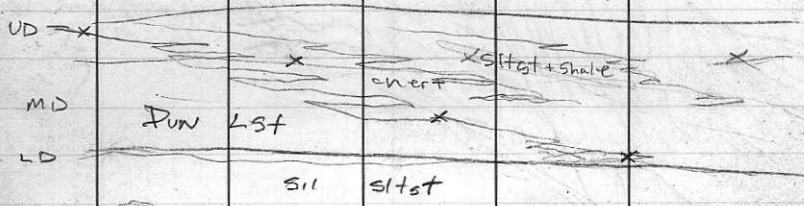
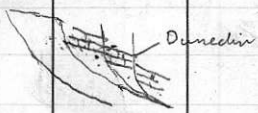
also photo toward cirque

PARTY CHIEF .....

WEATHER .....



Left camp @ 9.16 am.  
 Arrived at start of traverse 9.25

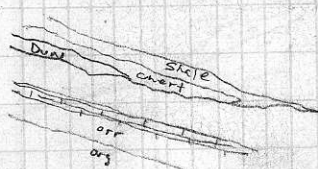
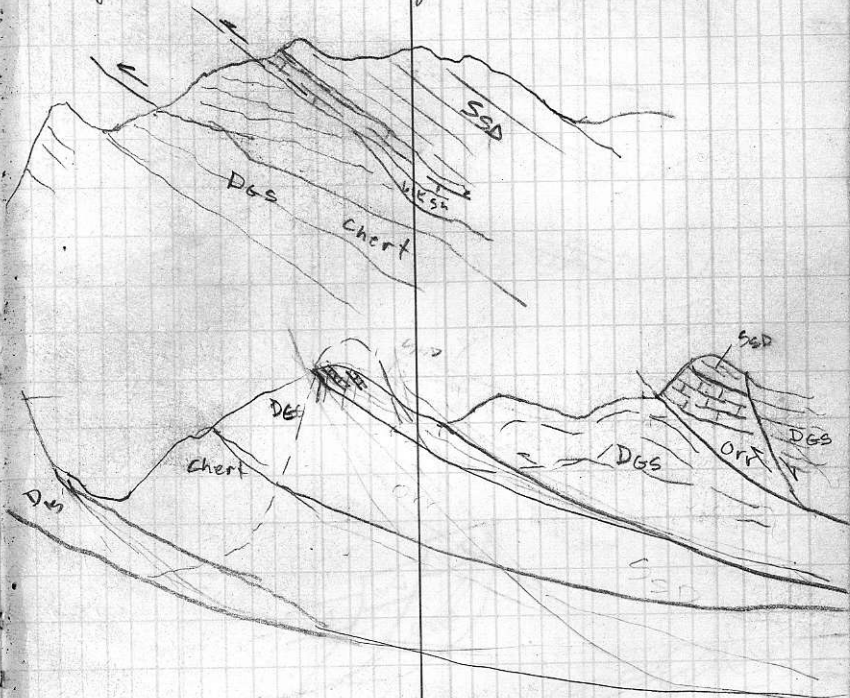


JOB ..... *Yule Property* .....

DATE ..... *July 18, 1979* ..... PAGE .....

Left camp 8.45. arrived at  
Yule claims 8.56. - .7 hrs

View toward Argyle



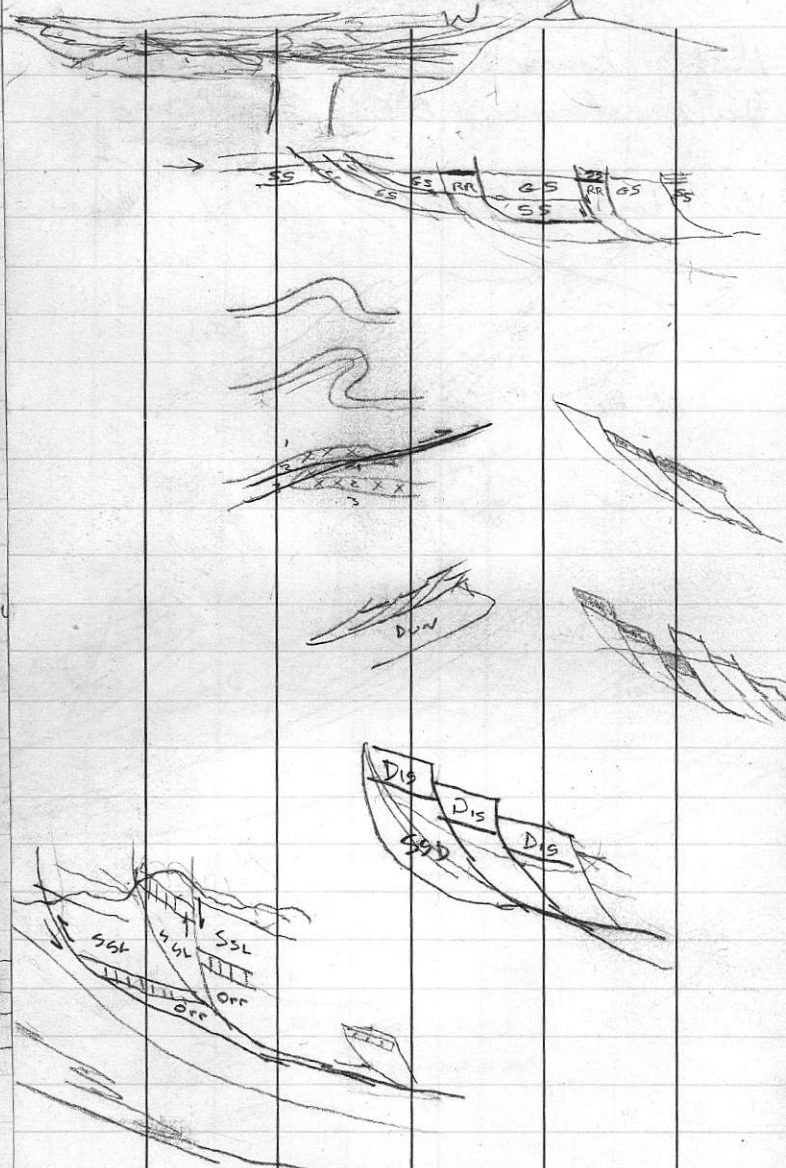
PARTY CHIEF .....

WEATHER ..... *Sunny* .....



JOB .....

DATE ..... PAGE 2 .....



PARTY CHIEF .....

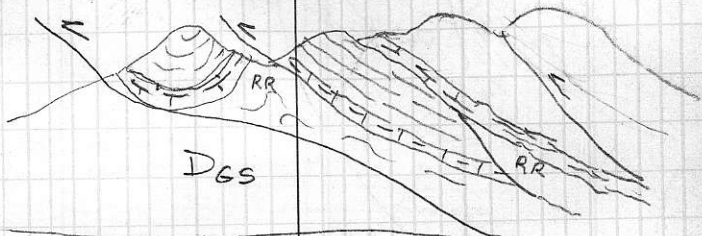
WEATHER .....



JOB ..... July 19, 1979 ..... Cirque.....

DATE ..... PAGE .....

Traverse  $\bar{z}$  B. Ballantyne



Foliation 320/V Black stly  
shale o/c in creek below  
showing Bedding 340/50NE?

PARTY CHIEF .....

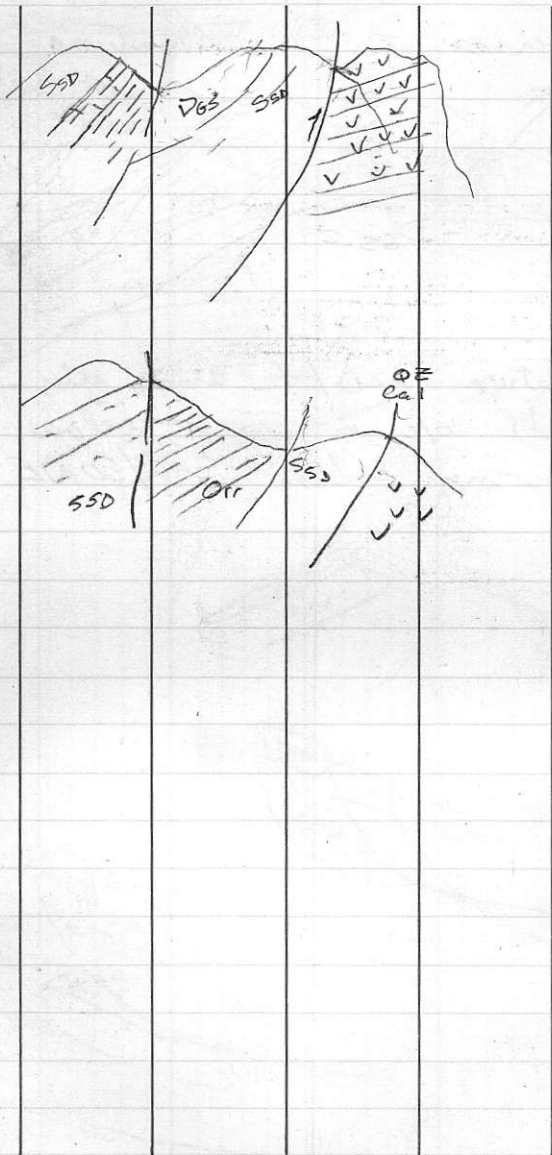
WEATHER ..... Overcast / Sunny .....





JOB .....

DATE ..... PAGE .....



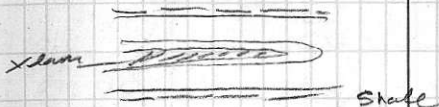
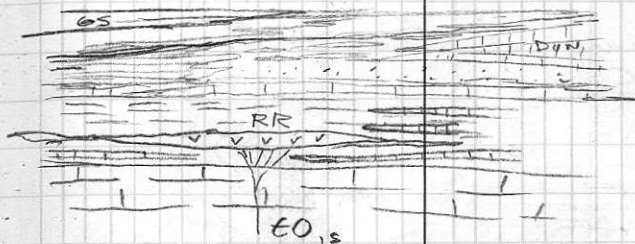
PARTY CHIEF .....

WEATHER .....

JOB .....

DATE July 21, 1979 ..... PAGE .....

completion of traverse across  
Pul claims



330/28SW

PARTY CHIEF .....

WEATHER Intermittent Rain .....

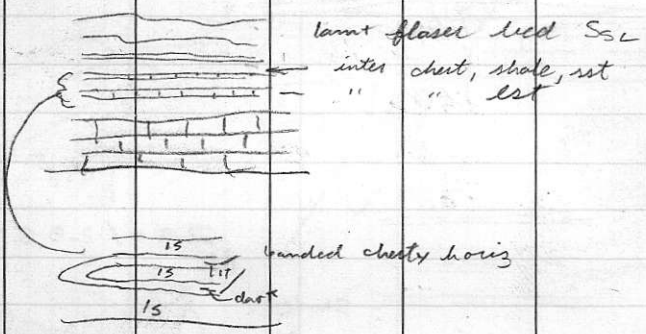


JOB ..... Fluke - Dog Claims .....

DATE ..... July 22 ..... PAGE .....

Left camp 9.44 am  
Arr Dog Claims 9.55 a.m.

Exposure of S<sub>1st</sub> at base  
of S<sub>2L</sub>



Pickup 4.50 p.m.



PARTY CHIEF .....

WEATHER .....

JOB ..... ELF Showing.....

DATE ..... July 23, 1979..... PAGE .....

left camp ca 12.10 pm

Showing on Elf Claims

1245 m elevation

Bedded m to cgr. galena ±  
barite ± sil pyritic argillite  
and shale interbeds. Slabby  
with rusty ox. Some bands  
of Barite Bed @ 300°/50SW

79 EF 1 - m. gr. bedded galena ±  
few shaly lenses. Float

79 EF 1A Cal - qz on ± c. gr  
galena.

79 EF 1B hum m - cgr galena

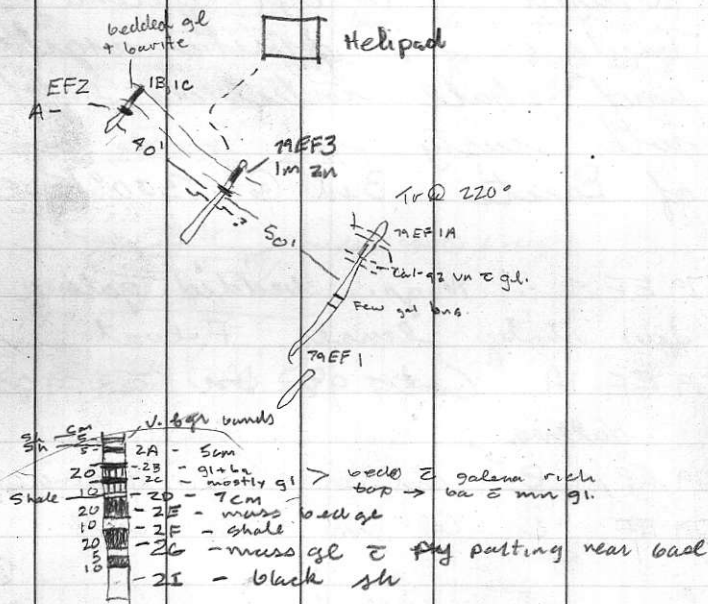
79 EF 1C Gd in mass Barite

79 EF 2 Seq. Top of trench to  
bottom

PARTY CHIEF .....

WEATHER ..... Rain / Overcast.....

**NW**  
wade



JOB ..... Mt. Alcock Traverse .....

DATE ..... July 24, 1979 ..... PAGE .....

Traverse across Mt Alcock  
ridge. left camp ca 8.30  
am. c B. Ballantyne and  
Sam Sam

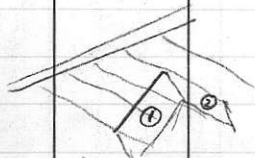
PARTY CHIEF .....

WEATHER ..... Sunny .....



Left camp 9.15 am  
 Arrive head of Elf Creek 9.40

Current measurement in SSL



Bedding 305 / 88 NE

- ① Plane I to trend 225 / 40 NW  
 ② Plane II to trend 210 / 55 SE

JOB .....

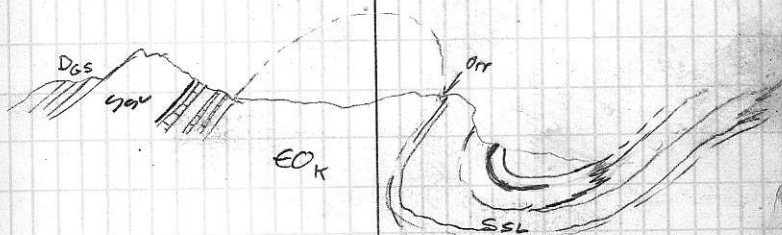
DATE July 26 / 1979 PAGE .....

SAM SEN  
1320 CAHILL DR.  
OTTAWA, ONTARIO  
K1V-7K4

B. Ballantyne  
601 Booth St.  
Ottawa  
K1A 0E8

Supplies for next camp  
- garbage bags  
- lunch bags

Traverse on Elf Claims  
left camp c.a. 10.00. 530 pickup



PARTY CHIEF .....

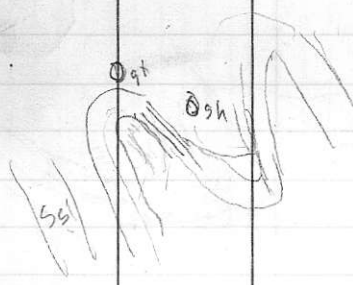
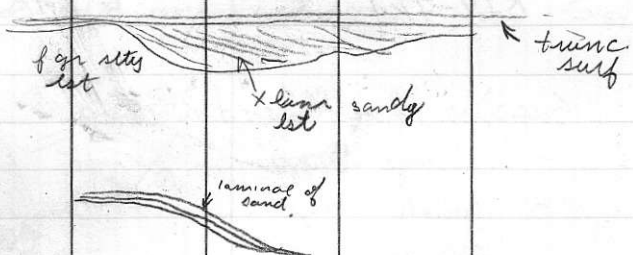
WEATHER Sunny / Overcast



JOB Ridge S of Elf Creek

DATE July 27, 1979 PAGE

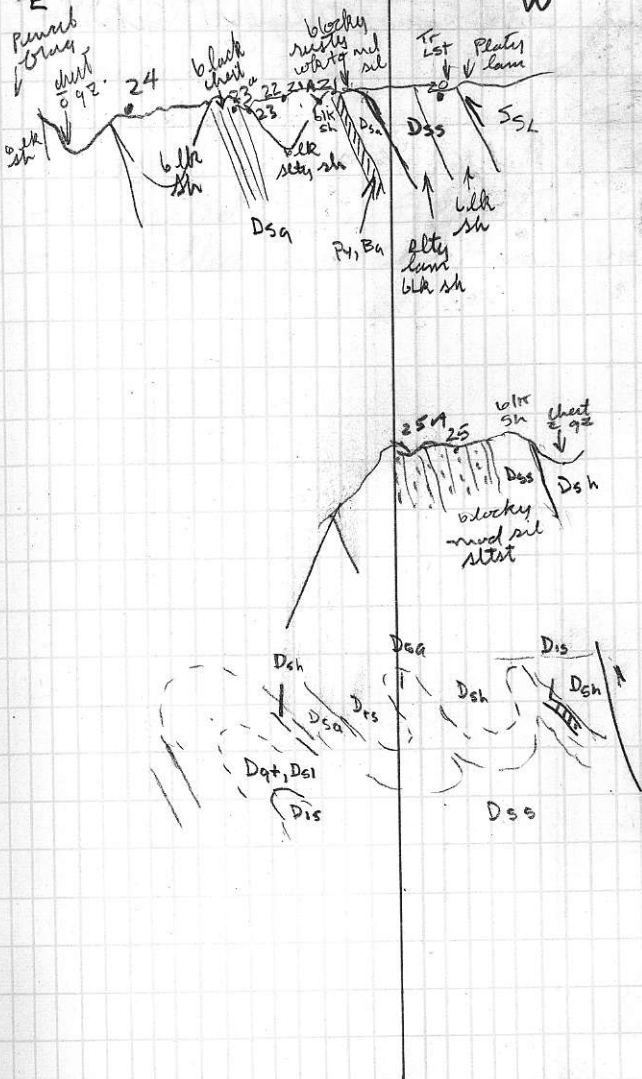
Load structures in lst



PARTY CHIEF

WEATHER Sunny / Overcast

# Gunsteel Stratigraphy



JOB .....

Smithers

DATE (S) .....

July 29, 1979

PAGE .....

Unloaded rock samples  
Plotting and monthly report  
preparation

Nick..

Aug 16, 1979



PARTY CHIEF .....

WEATHER .....

JOB ..... Smithers .....

DATE (M) July 30, 1979 ..... PAGE .....

- Set up rock saw in Mine Rescue Station
- began cutting rocks
- continued plotting and monthly report prep.
- visited T. Shoeter in A.M.
- called NCC in Victoria

PARTY CHIEF .....

WEATHER .....



JOB ..... *Smithers* .....

DATE .. *July 31, 1979* ..... PAGE .....

- cutting, labelling and
- description of rock samples
- plotting and preparation  
of travel vouchers.

JOB ..... Smithers .....

DATE ..... (w) Aug. 1, 1979 ..... PAGE .....

- cutting, labelling and description of rock samples
- plotting of geology on 1:125,000 scale map.

PARTY CHIEF .....

WEATHER .....



JOB .....

Smithers

DATE (1) .....

Aug 2, 1979

PAGE .....

- cut rock samples
- plotting of geology map
- stratigraphic section
- travel vouchers.



PARTY CHIEF .....

WEATHER .....

JOB ..... Smithers .....

DATE ① ..... Aug 3, 1979 PAGE .....

- cut rock samples -
- plotting of geology map
- purchased groceries
- for Pretzel Lake camp
- filled propane tank

PARTY CHIEF .....

WEATHER .....





JOB ..... *Smithers* .....

DATE ..... *⑤ Aug 4, 1979* ..... PAGE .....

- Day	off			
-------	-----	--	--	--



PARTY CHIEF .....

WEATHER .....

JOB ..... Smithers .....

DATE .. ⑤ ..... Aug 5, 1979 ..... PAGE .....

- continued cutting rock samples
- packed office supplies for Pretzel LA camp.
- packed personal gear

PARTY CHIEF .....

WEATHER .....



JOB ..... Smathers → Pretzel Lk .....

DATE ..... July 6, 1979 ..... PAGE .....

Left	Tyce Lk	ca	10:45am
Smathers	Air Service	Otter	
Split	charter	in	Cyprus.

left camp, ca 10:45 am.

barite

mass finely lam grey siltst

fol soft graph shale inter blk ch + blk silt

grey phyllite shale + inter siltst

Divisions  
of D sh  
in Croque  
Drilling

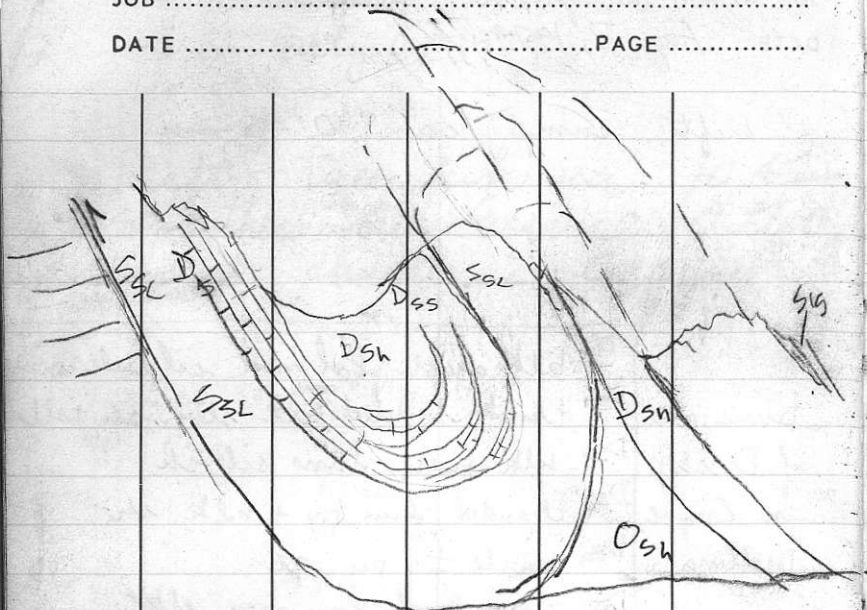
- D<sup>sh</sup> blk graph fol mod sil shale mx siltst
- D<sup>sh</sup> thick bedded blk sily sh + siltst
- D<sup>ss</sup> blk finely lam sil sh
- D<sup>py</sup> banded lam py + blk sh
- D<sup>ba</sup> barite ± py, qz
- D<sup>sl</sup> mass finely lam grey siltst
- D<sup>sa</sup> fol soft graph shale - inter blk ch + blk siltst
- D<sup>sh</sup> grey phyllite shale + inter siltst

### Structural Sect E of traverse



JOB .....

DATE ..... PAGE .....



Helicopter Time

July 7	40 min	.40 min
8	60 min	1.40 "
9	1.20 min	3.00 "
10	60 min	4.00 "
11	60 min	5.00
12	1.20 min	6.20
13	0	6.20
14	1.20	7.40
15	1.40	9.20
16	.20	

PARTY CHIEF .....

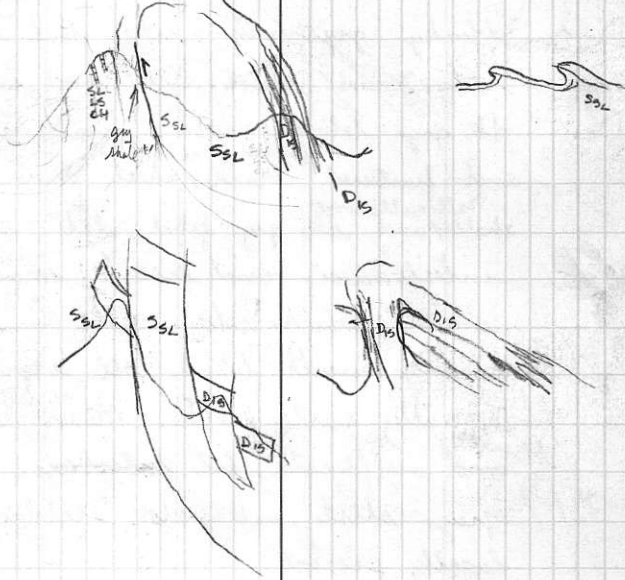
WEATHER .....

JOB ..... Mt Luke Traverse

DATE ..... Aug 7, 1979 ..... PAGE .....

Left camp ca 10.45 arrv C.A.  
11.00

Mt Luke Section



PARTY CHIEF .....

WEATHER .....



Left camp ca 9.15  
 Three spot checks E of mt Alcock  
 Start traverse ca 9.40

Devonian Shale Facies

- D<sub>5c</sub> blocky grey with stst and minor sst. minor chert. Stst mod sil
- D<sub>5h</sub> dk grey blocky with, usually veined and fractured, <sup>grey and chalcocyanic</sup> black chert Minor black, <sup>siltstone</sup> shale and dk grey fctd lst interbeds
- D<sub>5a</sub> interbedded mod fissile, mod siliceous black silty shale and slabby weath black sil argillite Typically rusty with. Minor <sup>v. fissile</sup> chert shale, and org weath lst interbeds, and grey stst interbeds. Blebby Ba locally present.
- D<sub>5h</sub> black carbonaceous soft very fissile silty shale + shale. Minor silty shale. Rocal thin brown rusty with x lam sst interbeds
- D<sub>5g</sub> dk grey with mod to very sil finely laminated to banded silty black shale and fissile <sup>blk shale</sup> minor stst and brown with x lam sst interbeds Min sil arg.
- D<sub>5i</sub> unbed chert + lst talchites

PARTY CHIEF .....

WEATHER .....

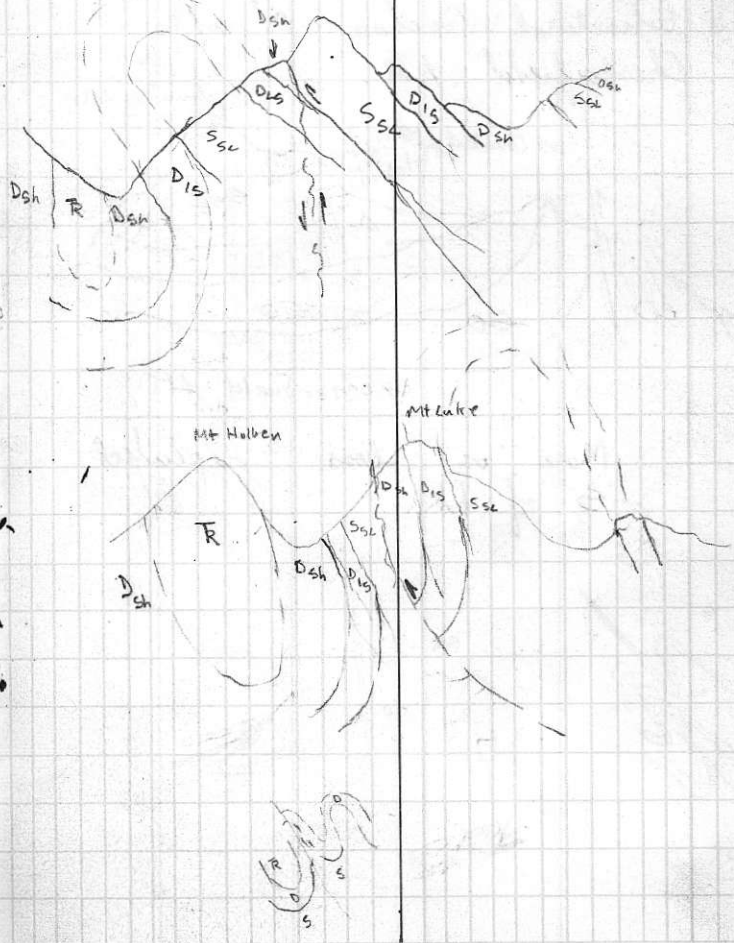


JOB ..... Kwadacha Ridge

DATE ..... Aug. 10, 1979 ..... PAGE .....

Left camp @ 8.55  
Arrived Kwadacha Ridge c.a. 9.10

Poss structural section on ridge to W



PARTY CHIEF .....

WEATHER .....



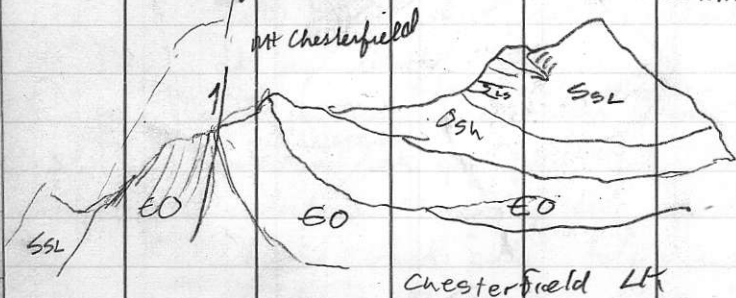


JOB ..... Traverse E of Kwasadacha Ridge  
 DATE ..... Aug. 11, 1979 ..... PAGE .....

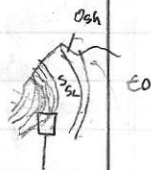
Left camp c.a. 8.50 am

Structural Section N of  
 Chesterfield Lk.

cloudmaker Mtn



More or less repeated  
 S of Lk

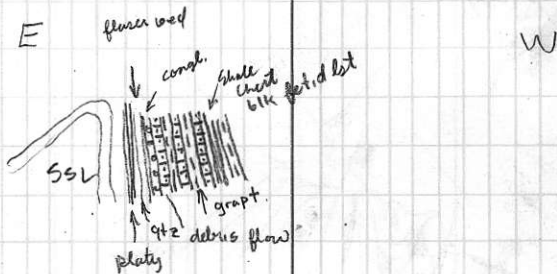


JOB ..... GIN CLAIMS .....

DATE ..... Aug. 12, 1979 ..... PAGE .....

Left camp c.a 9.30am  
45 min flt to gin claims.

Section on GIN claims



PARTY CHIEF .....

WEATHER .....



JOB ..... Pretzel Lk .....

DATE ..... Aug. 13, 1979 ..... PAGE .....

Chopper assigned to drill  
mound  
Plotting 1:125,000 and  
and 1:50,000 geology  
maps.



PARTY CHIEF .....

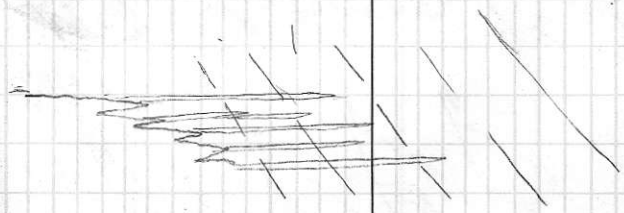
WEATHER .....

JOB ..... *Gr. Claims - traverse*

DATE ..... *Aug. 14, 1979* ..... PAGE .....

*left camp c.a 8.30 a.m.*  
*arrive c.a 8.50 am.*

*Chert, sil arg*  
 +



*x-lam chert*

*cong*

*ss*

*51451*

	<i>black quartz stty sh</i>	<i>black sh</i>	<i>chert</i>	<i>black fetid det</i>
<i>151</i>	<i>qtz stty</i>	<i>sil stty shale sil arg</i>	<i>ch</i>	
	<i>rst</i>	<i>stty 1m stty shale</i>	<i>shale</i>	<i>shale</i>
<i>det</i>	<i>cong</i>	<i>rst stty</i>	<i>stty shale</i>	<i>shale</i>

*S1 316 / 35N*

*S0 330 / 85N*

PARTY CHIEF .....

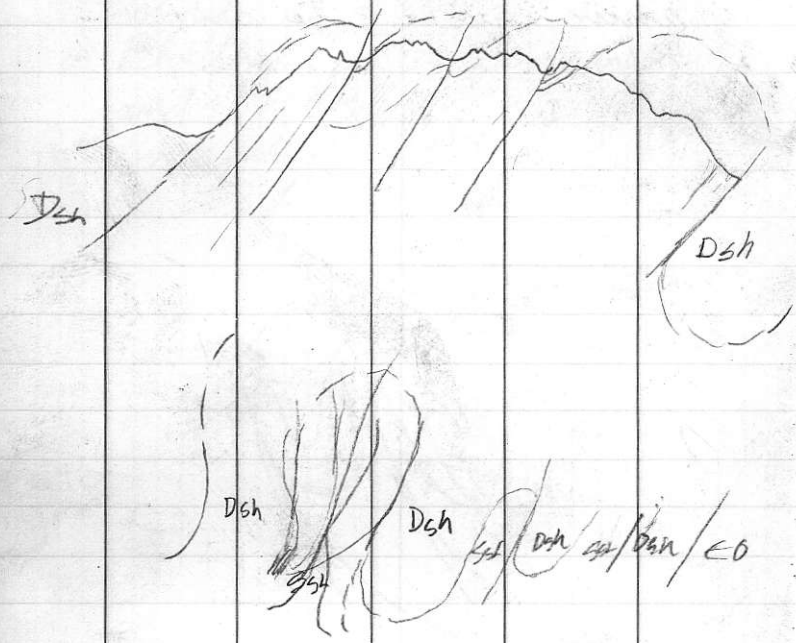
WEATHER .....



JOB ..... Traverse W of 6th Claims

DATE ..... Aug. 15, 1929 ..... PAGE .....

Section on ridge to N



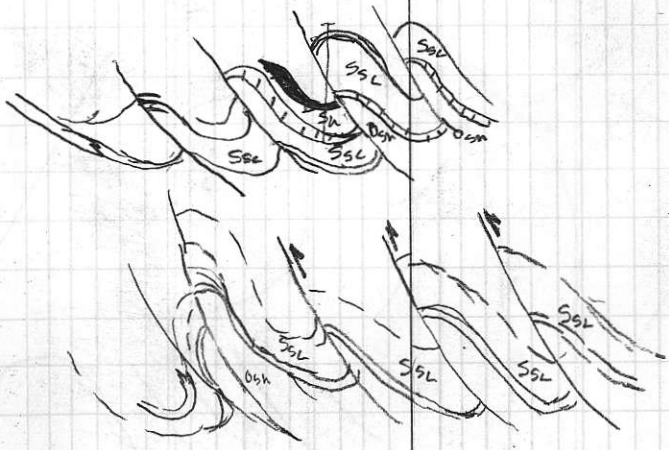
PARTY CHIEF .....

WEATHER .....

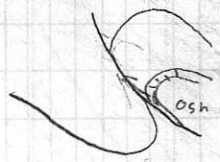
JOB ..... Cirque Claims.....

DATE ..... Aug. 16, 1979..... PAGE .....

Left camp c.a 12.05  
Arrive Cirque 12.15 (10 min)



Foss # 1



PARTY CHIEF .....

WEATHER .....



JOB .....

DATE ..... Aug. 17, 1979 ..... PAGE .....

Tour. of Cirque, Mt Alcock				
Exp. E. N. C. Carter, R. Harst				



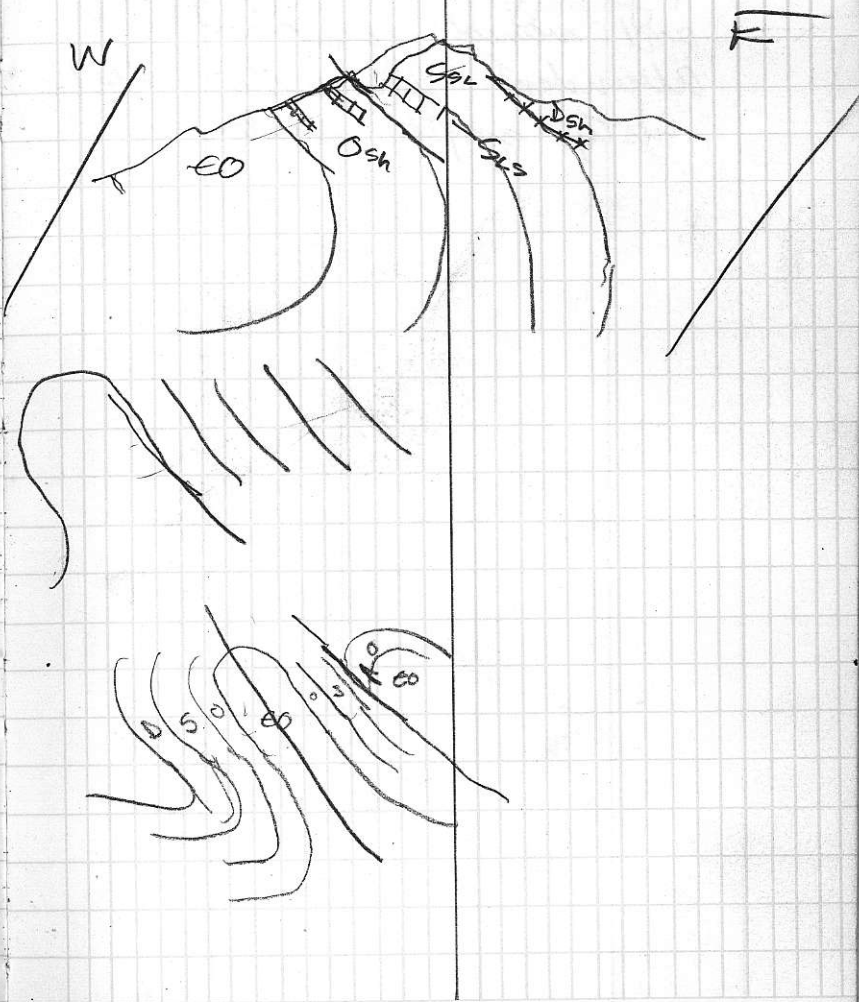
PARTY CHIEF .....

WEATHER .....

JOB ..... Fluke Traverse .....

DATE ..... Aug 18, 1979 ..... PAGE .....

9 left camp c.a. 9.05  
arr. c.a. 9.15



PARTY CHIEF .....

WEATHER .....





Fluke showing laminar  
banded py. Some c. gr.  
py + galena Highly sheared  
and veined. Graph.  
Abundant ferr. crete. 65%  
rusty graph shales

JOB .....

DATE ..... Aug 19, 1979 ..... PAGE .....

Pretzel Lk Pt + Smothers.

PARTY CHIEF .....

WEATHER .....



JOB ..... Smithers .....

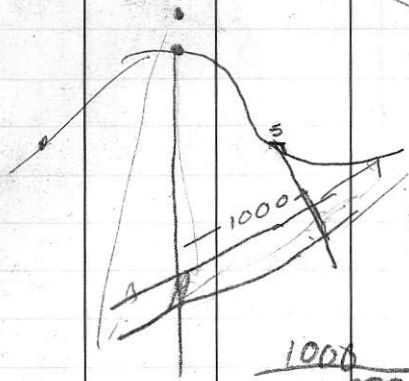
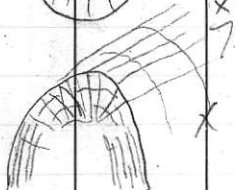
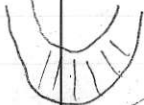
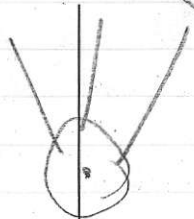
DATE ..... Aug. 20, 1979 ..... PAGE .....

- cut rx samples
- moved equipment
- packed rx samples

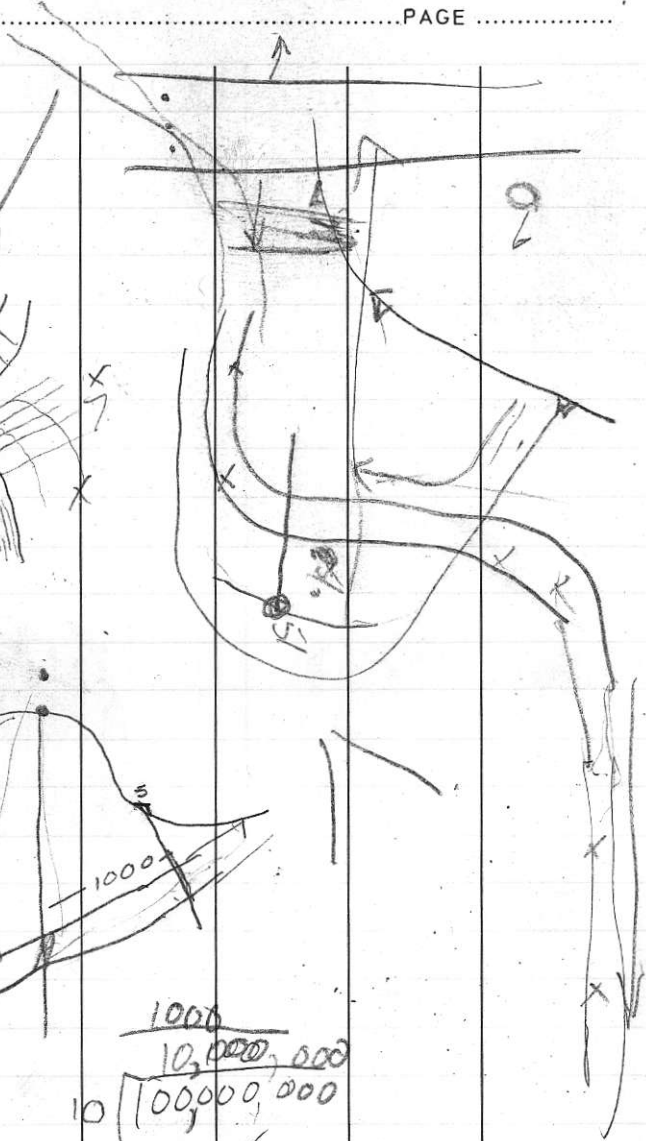


PARTY CHIEF .....

WEATHER .....

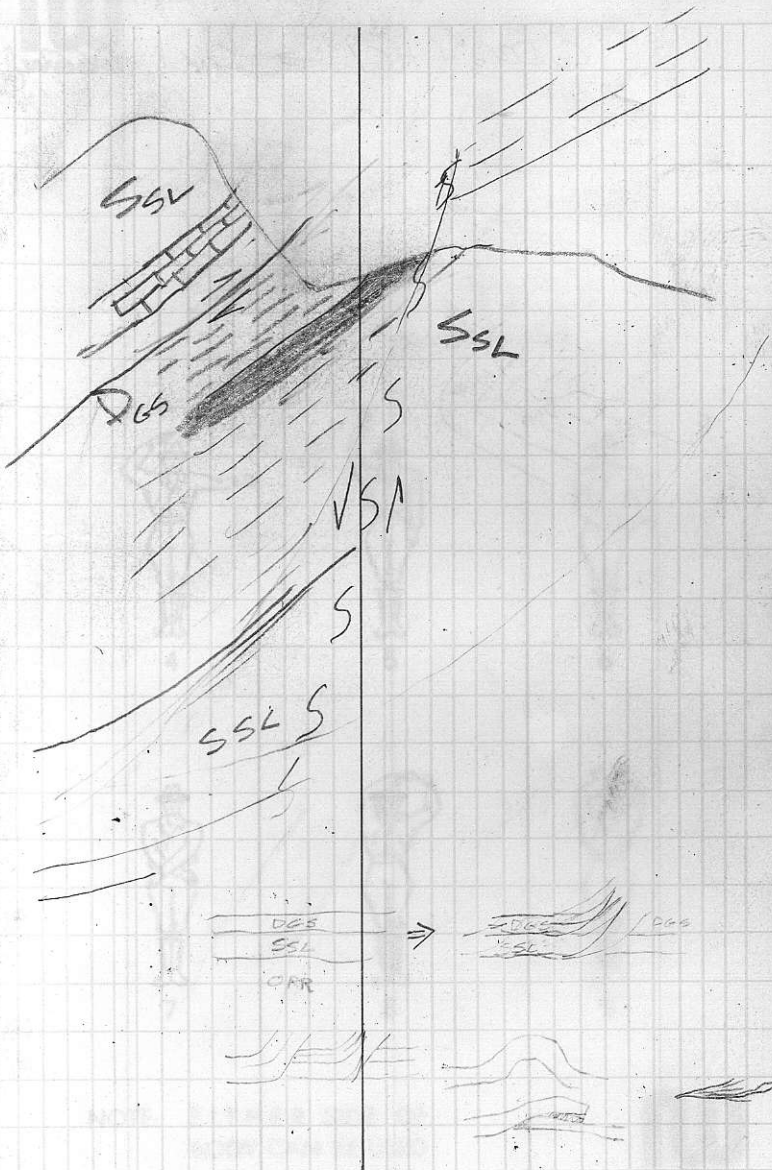


1000  
 10,000,000  
 10 | 100,000,000



JOB .....

DATE ..... PAGE .....



PARTY CHIEF .....

WEATHER .....



