

676077
MAC
93K/13

RIO ALGOM EXPLORATION INC

P O Box 10335 Pacific Centre
1650, 609 Granville Street
Vancouver, B C V7Y 1G5

Tel: (604) 688 3646

Fax: (604) 669 0447

To: ~~DR. R. K. KIRKHAM~~

From: ~~C. D. SPENCE~~

Re: MAC MOLY.

cc R. Anderson
B. Stauik
K. Dawson
J. Whalen

* Colin,
Wants this kept
confidential until the
paper in the CIM
porphyry vol. is published
R. K.

Herewith abstract from short paper
for CIM Volume and location/geology
map. NTS is 93 K 13.

We welcome any study of this
and can make specimens available

We can discuss it further if
you wish.

A K-Ar date on the mineralized
granite (biotite) is 136 ± 5 my.

The adjacent unmineralized granodiorite
is 141 ± 5 my.

Cheers!

~~C. D. Spence~~

A total of 3 page(s) will be transmitted, including this cover sheet.

Date: Oct 19, 94 Time: 15.15

Operator: ~~AT~~

10/18/84 10.21 004 008 0447 RIO ALBION EXP. 777 GSC FENDER 51 002/003

Abstract

The MAC porphyry molybdenum prospect is located 100 km east of Smithers in central British Columbia. The identification of anomalous levels of Mo, Cu, and Ag in three adjacent lakes, sampled during a regional lake sediment survey, lead to the discovery of molybdenite mineralization in float. Subsequent magnetic and soil geochemistry surveys, together with prospecting and mapping, located the source of the float. Mineralization is hosted by a leucocratic granite stock of the Lower Cretaceous Topley Intrusions which has invaded Carboniferous and Permian Cache Creek Group volcanic and sedimentary rocks. The stock measures 500m x 300m at surface and is mineralized throughout. Sulfide mineralogy is simple and consists of molybdenite with minor pyrite and local chalcopyrite. Molybdenite mineralization comprises up to 0.2% and occurs within fractures and as selvages along quartz stockwork veins.

Known mineralization is coincident with distinct soil geochemistry and magnetic anomalies. Two additional areas of the property display similar features and these remain to be tested.

LAT $54^{\circ} 51' 30''$ N.
LONG $125^{\circ} 34' 30''$ W

93K13

NW corner
RT Power shut

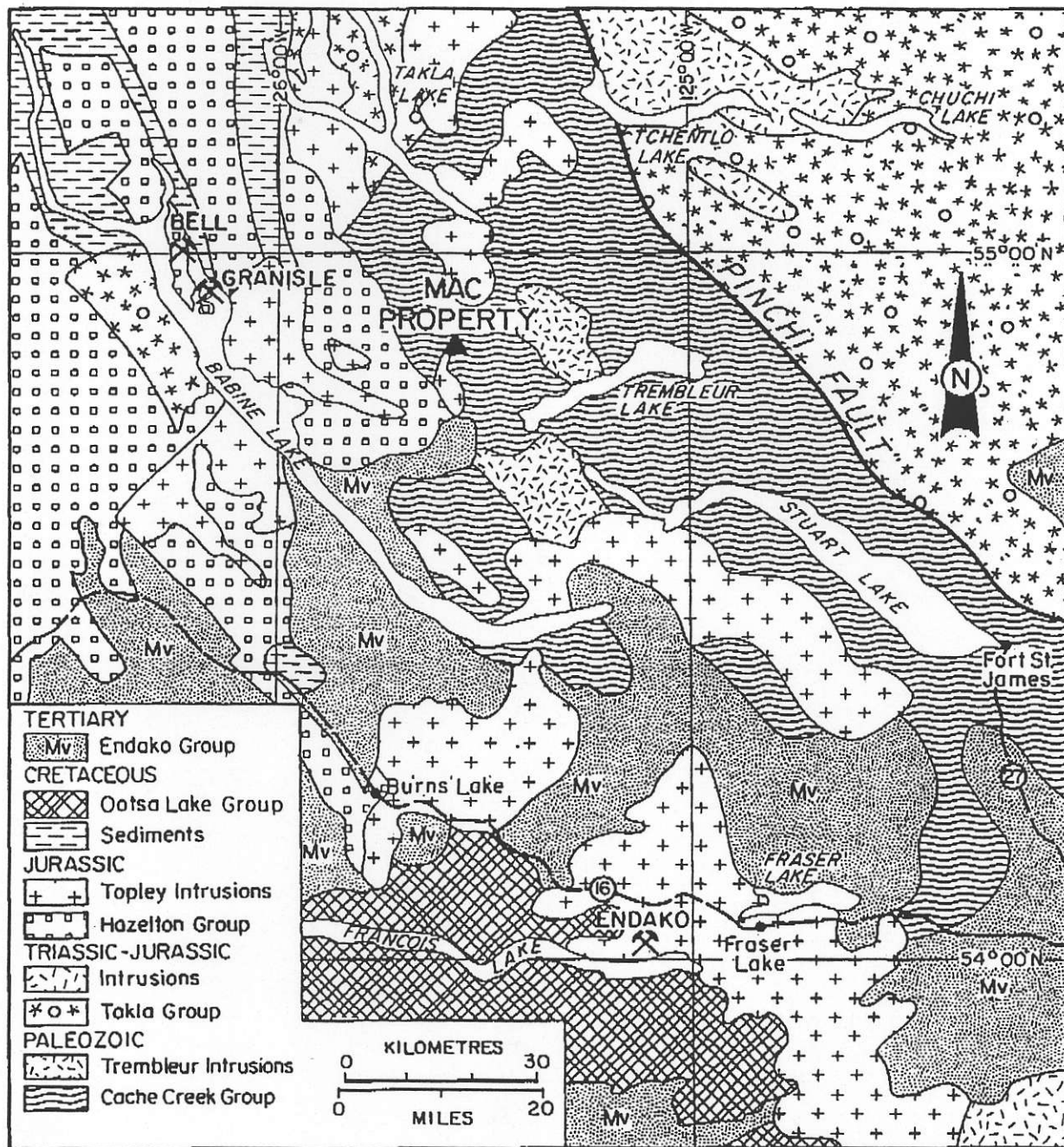


Figure 1 Regional geology showing distribution of the Topley Intrusions and location of the MAC property.