

2762?

Windy Craggy  
114P/13

676028

\* 2800 basalt adjacent area

2795 vale flow or sill in RW

\* 2785 pillowed basalt NE  
end archbody ridge

\* 2786 ✓ amygdaloidal basalt  
NE of DD 38

2756 ✓ dyke, SW end (diss pyrr.)

2758 ✓ ? sill SW end

\* 2749 ✓ dacite? sill or flow, SW  
end  
fresh but - qtz - clay.

\* 2735 ✓ Ridge S of archbody: group from  
Flows

\* 2724 ✓ felsic pillowed

\* 2725 ✓ " + 64

2726 ✓ "

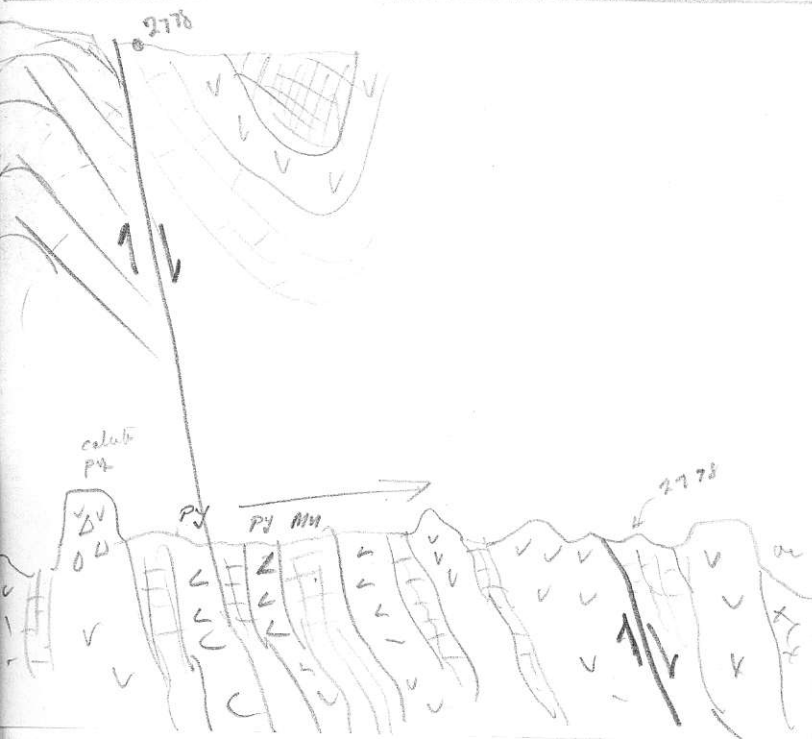
Au \$400/oz @ .303 = \$120<sup>00</sup> (1)

Cu \$ .60/lb @ 30lb \$18.<sup>00</sup> (2)

Ag \$8/oz @ .303 2.40 (4)

Co .1 = 2lbs ~ 10/10. 20. (3)

= Au Cu Co Ag deposit



5-4678

Wendy Croffy - Paul  
Mannering  
CANNETT

Co. all interests to RES  
+ RESz

unbound pulpstone, open  
spaces between fragments.

Intersect Chalcopyrite

looks like scaplon accumulation.

large cavities in drilling

- oxidized or primary?

- like USGS drawing on

Iron de Ruca

From Lead Table

Eestall

206/204 ~~19.607~~ 18.303

207/204 15.549

208/204 37.788

---

Britanna eK

avg of 7

206/204 18.507

207/204 15.562

208/204 38.085

---

Seneca durati

avg of 2

206/204 18.316

207/4 15.576

208/4 37.905

---

Nifty (J-K)

18.818

15.622

38.427