

MEMO from

R. SOMERVILLE

675951

Erikson Gold

104P/4

Ken Dawson

I have enclosed
a sample just given to
me on Friday from the
line #4 vein on the
Cusac property which
I think has some galena.

Also enclosed is a
galena sample from the
Bad Bear claim on
Mc Dame Creek near

over ↘

Centerville. This
property is listed in
MMAR - 1965 P 14

as M^c Dame Belle.

The deposit is in a
skarn zone in the
Atan carbonates

I'll be interested
to hear the results

Rief

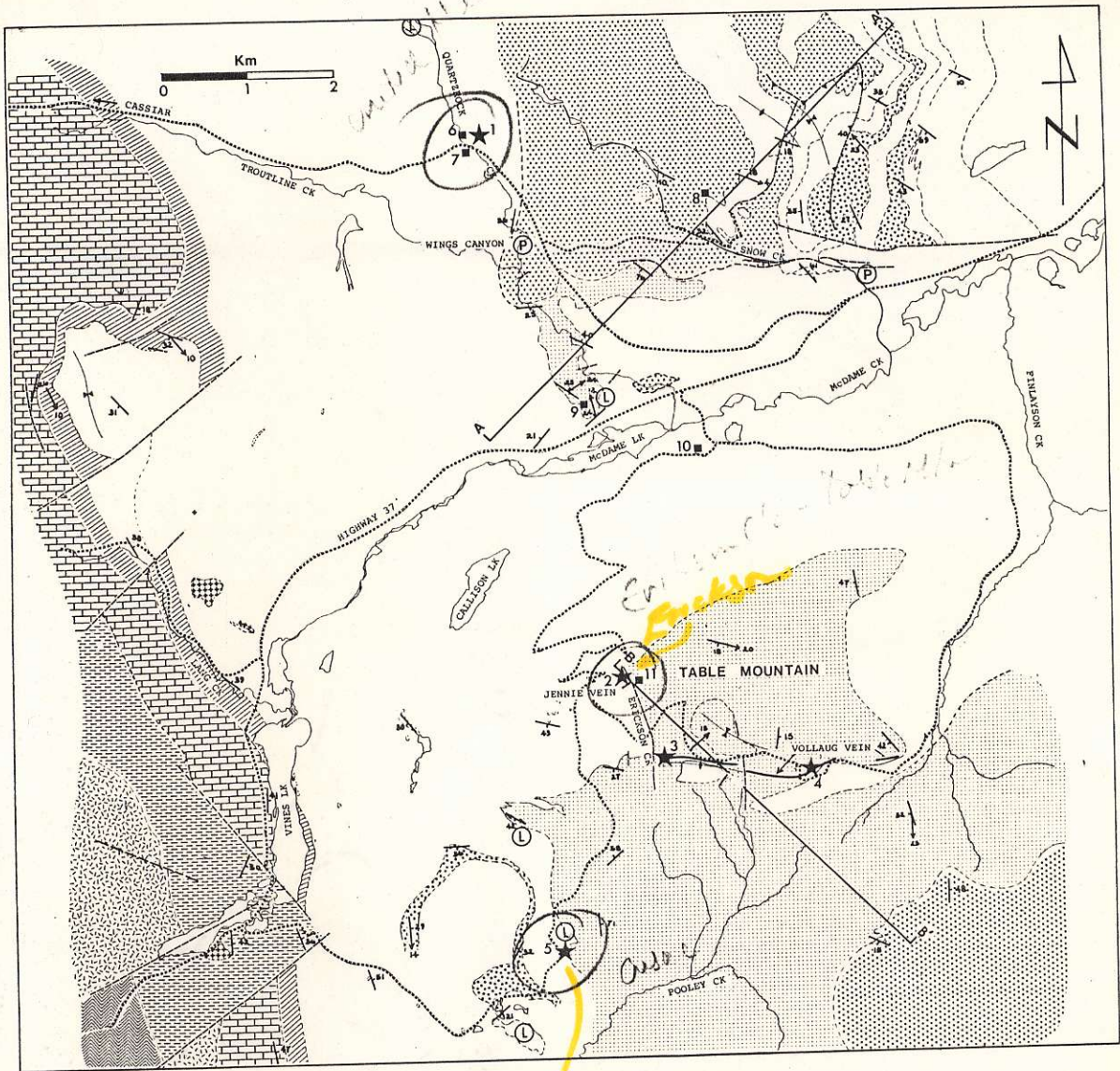


Figure 18. Geology of the McDame map-area.

Cusae.

DY 2544 2/12/82
ph isotope analysis of Zn Cu Pb
ven.

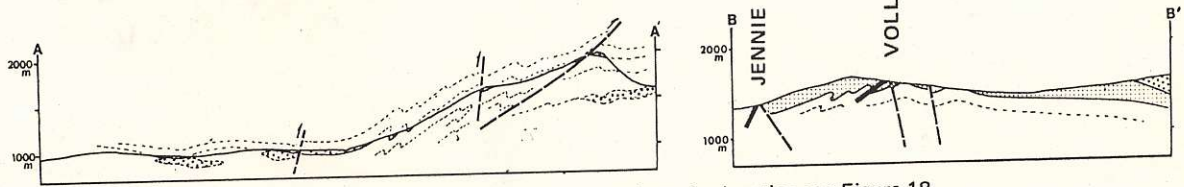
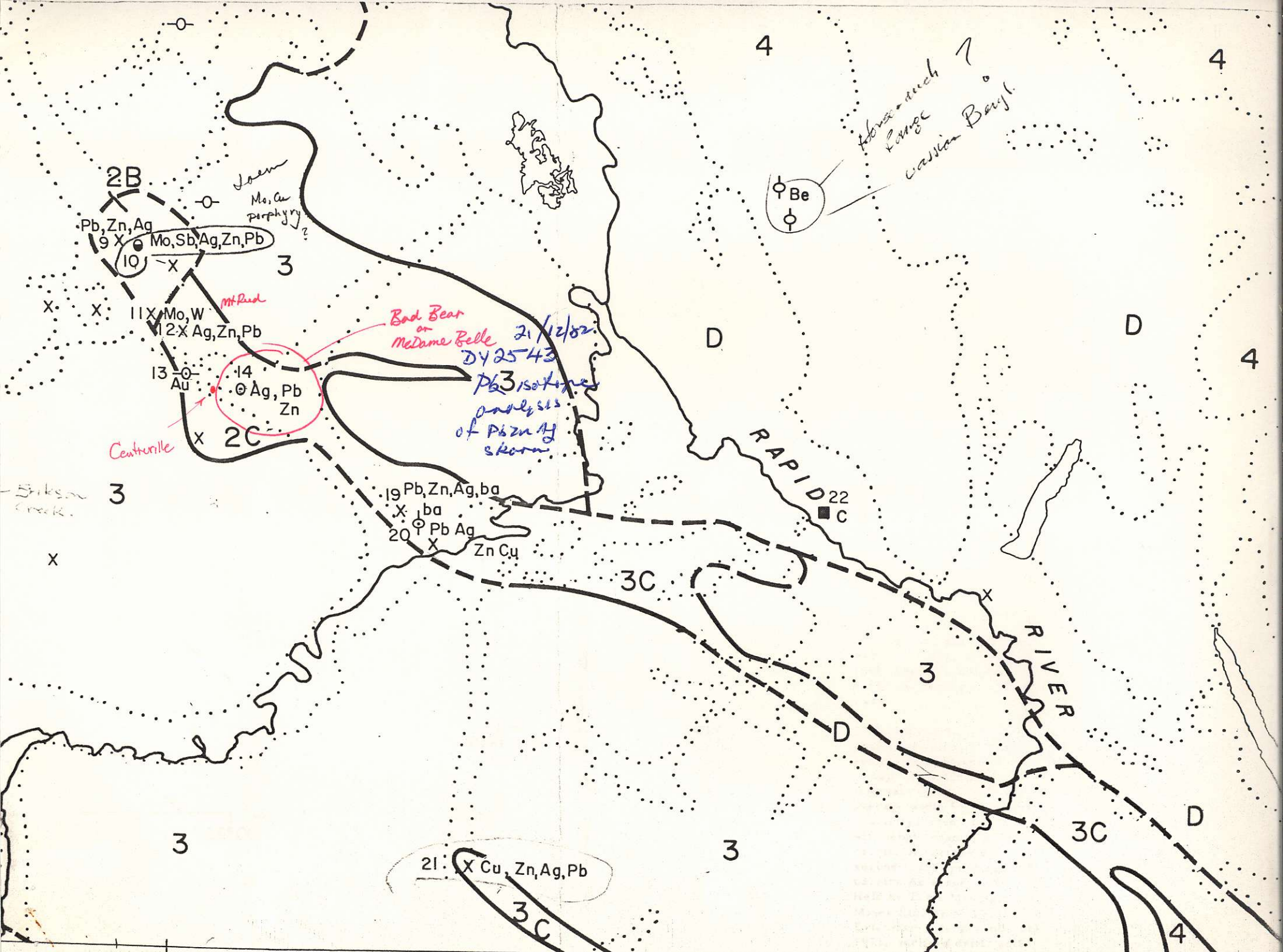
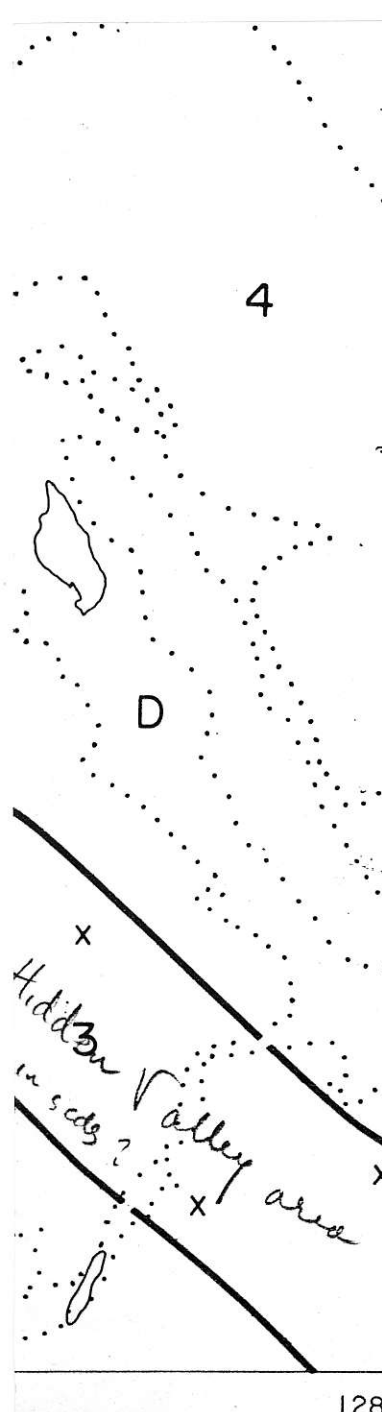


Figure 19. McDame map-area, cross-sections; for location see Figure 18.





A 11

DOME Mo, W SKARN
(Mt Reed)

No. 17 hole averaged 1.39%
Sb, 1.21 oz./ton Ag, 0.35%
Pb, 0.5% Zn over 60' core
length.

Several areas of skarn
with molybdenite, scheelite
and magnetite. North
side skarn samples suggest
grades of 0.2% MoS₂, 0.16%
WO₃. Total of 5598'
drilling 1956 and 1970.

GEM 1970 p. 35

12

REED, Ag, Zn, Pb SHEAR ZONE
IRON CAP

Shear zone 10 to 20' wide
at quartzite-limestone
contact in Atan Group
mineralized with sphalerite,
galena, pyrite.

GSC Mem. 319 pp. 114-116

13

McDAME Au PLACER
CREEK

Since discovery in 1874, at
least 64,117 oz. Au
recovered by 1945.

MMAR 1931 pp. 54-61;
1949 pp. 236-237;
GEM 1969 p. 41

14

McDAME Ag, Pb, Zn SKARN AND SHEAR
BELLE

Dolomitized limestone of
Atan Group contains galena,
sphalerite, chalcopryrite,
scheelite, hydrozincite.
Picked shipment of 750 lbs.
contained 80 oz./ton Ag, 1964.

GSC Mem. 319 p. 114;
MMAR 1965 pp. 14-15

15

VINES, Cu, Zn VEIN OR BEDDED
CLAY

"Vein" of sulphides 3'
wide conformable with
bedding in argillaceous
limestone wall rock.
(Drilling 1961, 1967
totalled 4,351' but may
have been on claims to
north and south.)

MMAR 1967 p. 26;
1961 p. 7

16

ELOISE, Mo, Cu PORPHYRY
RUSTY

Fracture fillings and
disseminations in a latite
(monzonite) stock with
molybdenite, chalcopryrite.
Adit 2,905' long driven in
1968, 1969; 1,500' drilling
1969. No record of subsequent
work.

GEM 1969 p. 41

CASSIAR MOLY

17

VOLLAUG, Au, Ag VEIN
HURRICANE GROUP

Ribboned quartz vein at
contact of volcanics and
sediments in Sylvester
Group. Exposed at
intervals along 7,000' with
average width 5'. Two ore
shoots reported: one of
450' length grading 0.72
oz./ton Au across 4.7';
second 1,200' grading 0.68
oz./ton Au across 4.6'.
Held by Table Mountain
Mines Ltd. since 1953.
Extensive underground work
1973; inclined drift, adit,
drifts.

GEM 1970 p. 36;
GSC Mem. 319 pp. 116-117;
MMAR 1937 pp. B24-34

59°00'
128°00'