

- Mike Bradley  
 - Day Perkins

H.C. PIRES

# NEWS RELEASE

VSE Symbol: LYS

For Immediate Release

October 18, 1989

## Initial Sampling Indicates Discovery of a Major Copper/Gold Porphyry System

**Lysander Gold Corporation** (LYS - Vancouver Stock Exchange) announces that analyses from its recent trenching program at the CAT property have yielded significant widths of copper/gold mineralization which may indicate the presence of a major economic porphyry environment.

Lysander has an option to earn a 50% interest in the CAT property and an option to earn a 100% interest in the internal BET claim. The property, accessible by road, is located 90 miles northwest of the Mt. Milligan deposits in B.C. and is in a similar geological setting.

### Trenching Program

The trenching program has been based on the presence of bornite, chalcopyrite and gold bearing magnetite veins hosted by altered volcanic units adjacent to a syenite stock. Trenching results have been used to select initial drill targets. Trenching has been completed across only a portion of the apparent width of mineralization on two zones exposed on Cat Mountain. Significant results of the program are shown in Table 1.

### Drilling Program

Following the very encouraging results from trenching, a 2,000 foot diamond drilling program commenced on October 9th, 1989. The initial drill hole was located on the Upper Copper Zone and is designed to test the true width of the mineralization and grade continuity to depth. Results of this hole and subsequent holes will be announced as available.

### Increase of Claim Area

Because of the success of the exploration program to date Lysander has increased the CAT claim area from 7 sq km to 85 sq km. It is noted that staking activity in the area of the CAT claims has increased substantially over the latter part of September and early October.

On behalf of the Board

Lou Duarte, President  
(604) 681-8069

The Vancouver Stock Exchange has neither approved nor disapproved the information contained herein.

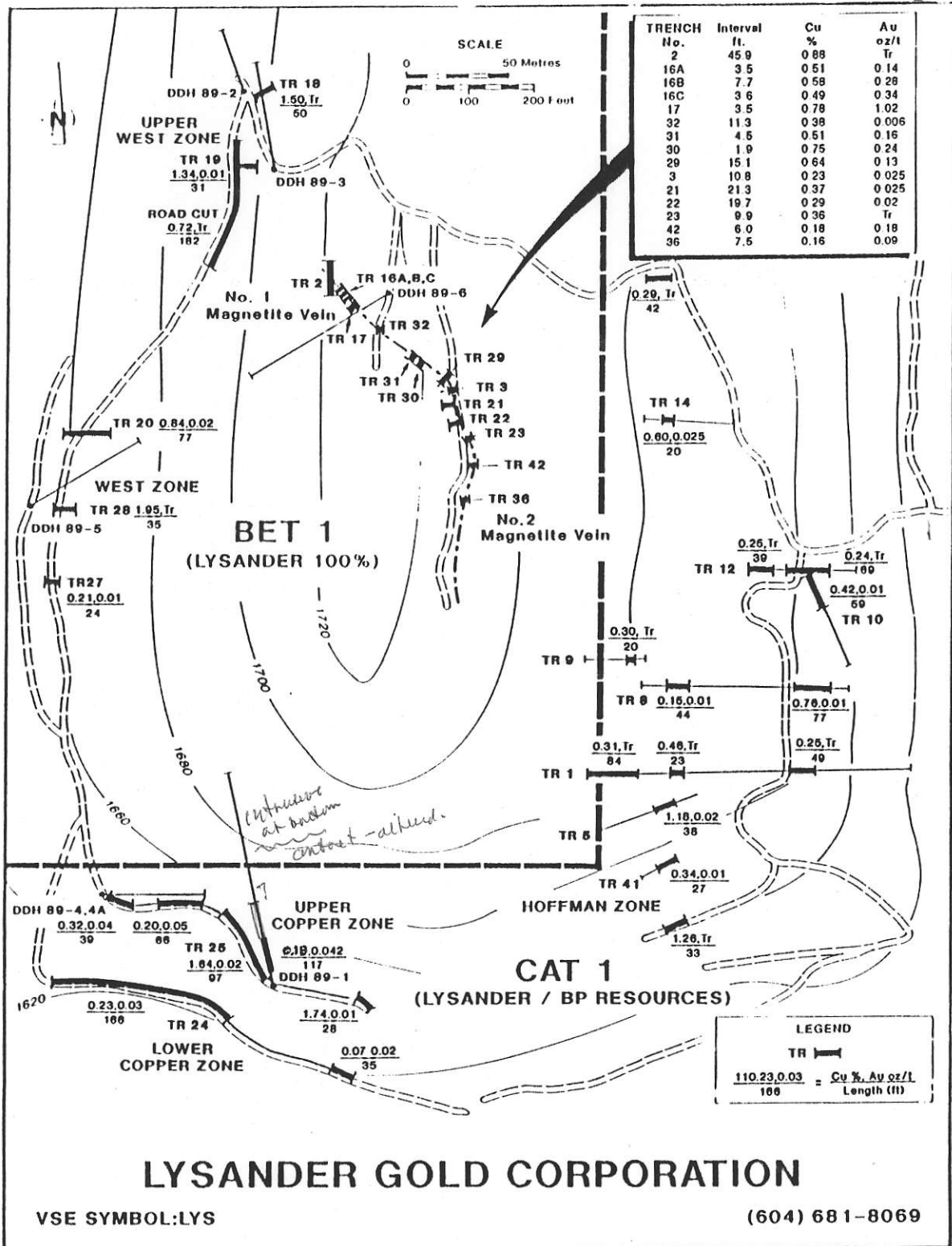
**Table 1: Results of Sampling Program**

October 1989

<u>Zone</u>	<u>Horizontal Distance (ft)</u>	<u>Copper %*</u>	<u>Gold oz/ton*</u>
<b>Upper Copper Zone</b> (South Face of Cat Mountain)			
Trench 25.....	97.....	1.64.....	0.02
	36.....	No Sample.....	No Sample
Trench 25 appears to be mineralized over its entire length of more than 300 feet but only the most obvious mineralization has been sampled to date.	66.....	0.20.....	0.05
	39.....	No Sample.....	No Sample
	39.....	0.32.....	0.04
	28.....	1.74.....	0.01
<b>Lower Copper Zone</b> (Approximately 150 feet south of Trench 25)			
Trench 24.....	166.....	0.23.....	0.03
<b>West Zone</b> (West Face of Cat Mountain 600 feet north north-west of Upper Copper Zone)			
Trench 20.....	77.....	0.84.....	0.02
Trench 28.....	35.....	1.95.....	Trace
Trench 27.....	24.....	0.21.....	0.01
<b>Upper West Zone</b> (Approximately 150 feet north of West Zone)			
Trench 18.....	50.....	1.50.....	Trace
Trench 19.....	31.....	1.34.....	0.01
Road Cut.....	182.....	0.72.....	Trace

\*All assays have been completed by atomic absorption technique and are at present being checked by fire assay.

Cu New porphyry like Mt Milligan



Vein zones are rubbly, chloritic - poor zone.

## PRIME GEOCHEMICAL METHODS LTD.

Dramatic changes in the methodology of exploration geochemistry have occurred in recent years. A strong competitive advantage is available to those exploration and mine development companies which make a strategic investment in geochemical expertise. Advantages to your program include:

- reduced overall costs.
- enhanced data presentation and interpretation.
- higher confidence in exploration target selection.
- effective "audits" of your sampling and analytical methods.
- efficient follow-up recommendations.
- specializing in Cu-Au alkalic porphyries (Mount Milligan type). See example from Cat Mountain project, Lysander Gold Corporation (below).
- reinterpreted B.C. Regional Geochemical Surveys in Atlas Format now available.

To maximize returns on your investment in geochemical surveys (or on chemical analysis), funds must be well spent. This does not just happen! **Prime Geochemical Methods Ltd.** is in business to service your needs in an efficient and cost-effective manner. For your multi-element plotting requirements contact **Cambria Data Services Ltd.** (see the accompanying advertisement).

**Stan Hoffman, Ph.D.**  
Consulting Geochemist

**Prime Geochemical Methods Ltd.**  
630 - 1199 West Pender St.  
Vancouver, B.C., Canada V6E 2R1  
Telephone (604) 684-0069  
Message (604) 731-8892  
FAX (604) 682-7354

## CAMBRIA DATA SERVICES LTD.

### MULTI-ELEMENT GEOCHEMISTRY

#### Data Processing - Map Plotting

In conjunction with **Prime Geochemical Methods Ltd.**, we offer services for the processing of your multi-element data. Our in-house computer systems are optimized for the rapid turnaround of large volumes of data. Enhanced data presentation allows all analytical results to be viewed in map form, ensuring a cost-effective and confident interpretation.

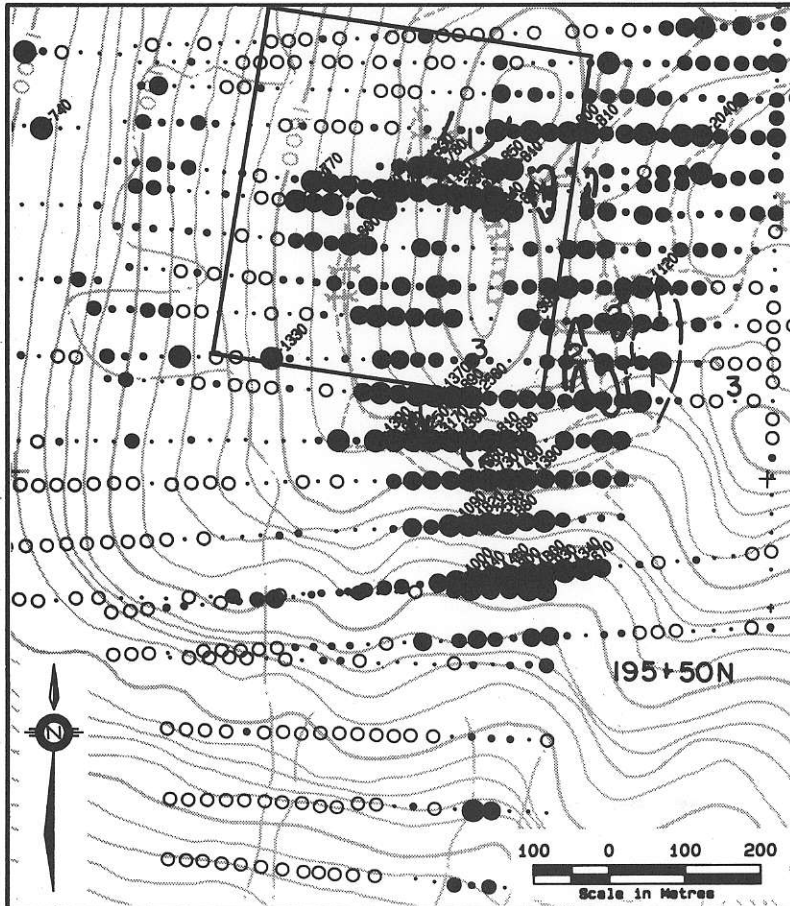
- Forward your sample location map upon completion of the sampling program. Your basemaps are ready for immediate plotting upon completion of the analysis.
- Interpretation and geochemical consulting are available from Dr. Stan Hoffman.
- If your processing requirements are large, talk to us about computer software sales and training.

**Cambria Data Services Ltd.** also markets and supports software for database, computer-aided map drafting and diamond drill logging applications.

Contact:

**Paul J. McGuigan, Consulting Geologist**  
**Michael Pond, Geologist-Programmer**  
**Bob Sandu, Programmer**

**Cambria Data Services Ltd.**  
630 - 1199 West Pender St.  
Vancouver, B.C., Canada V6E 2K1  
Telephone (604) 682-5313  
FAX (604) 682-7354



**LG** **LYSANDER GOLD CORPORATION**  
VSE SYMBOL: LYS 604-681-8069

## CAT MOUNTAIN PROPERTY

OSILINKA RIVER, BC

GOLD (ppb) IN SOILS

BET CLAIM (SHOWN) - 100% LYSANDER  
CAT CLAIMS - BP RESOURCES/LYSANDER

#### GEOCHEMICAL LEGEND

- > 600
- >400 TO 600
- >200 TO 400
- >100 TO 200
- >40 TO 100
- >15 TO 40
- 0 TO 15

#### GEOLOGICAL LEGEND

- INTRUSIONS
  - 1. monzodiorite
  - 2. syenite
- VOLCANIC ROCKS
  - 3. augite porphyry
- < trench

For further information contact:  
Mr Don Mustard 926-2144

MAP PREPARED BY CAMBRIA DATA SERVICES LTD