

Outdoorsmen Enjoy Legacy of Mining

In the 1880s, after paying 25 cents a head to cross the toll bridge superceding the natives' bridge which gave the Bridge River its name, prospectors could begin their arduous journey upstream from the Fraser River, panning in hopes of locating the mother lode.

Eventually their tenacity left Bridge River country laced with a network of roads and trails which remain for today's outdoors enthusiasts to explore. Glimpses of history, as well as spectacular mountain vistas beckon.

Backroad access to Gold Bridge and Bralorne (see map below) can be gained from Hwy 99 at Pemberton via the High Line Rd. (for 4x4s March through November) or Hurley River Forest Access Rd. (for pick-up trucks in summer or snow vehicles December through March).

Experienced snowmobilers can unload their machines at the Outdoor School north of Pemberton Meadows for the two hour trek over Railroad Creek Pass on the Hurley.

An advance phone call to Gold Bridge Hotel or Gold Dust Motel will reveal whether con-

ditions permit snowmobiling right to their doorsteps. However, even if lower elevations have thawed or been plowed for loggers, arrangements can be made with those same businesses to be met enroute.

"There is more accessible, mountain snowmobiling within 20 miles of Gold Bridge than anywhere else in B.C.," claims Wayne Yasinowski, owner of T & T Sports and an admitted snowmobile addict. He estimates one could not cover all of the side trips available just along the Hurley Rd. in four days of steady running time.

Logging activities in recent years also have opened Pearson Cr. Rd. (#4), Downton Lk. Rd. (#15) and Kingdom Lk. Forest Access Rd. (#21 and 24), where thousands of hectares of rolling terrain ideally suit family ATV expeditions. Even in severe winter conditions, they have minimal avalanche hazard.

Unoccupied Crown land surrounds Gold Bridge and Bralorne, where ATV-assisted access to wilderness camping can erase civilization's "rat race" from the mind. However, many Forest Service Recreation Sites also are available for those who prefer to have picnic tables and pit toilets provided (#1, 6, 8, 12, 22, 27, 28 and 30).

Gold Bridge Hotel offers shower and laundromat facilities to campers. Similar plans are afoot at the Gold Dust Motel.



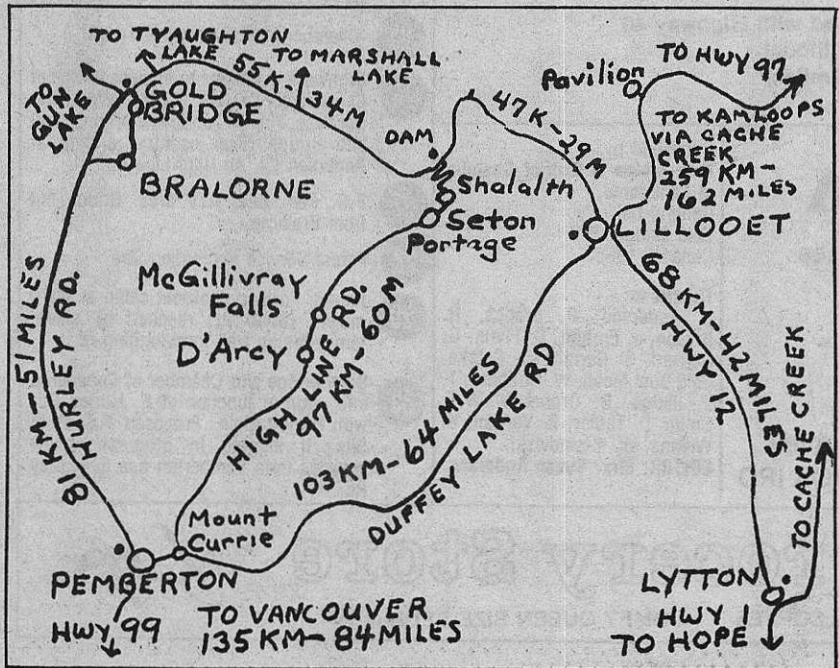
McGILLIVRAY PASS, 1934, [past #26] was site of Standard Mine cabins at 1740 m [5800 ft.] elevation. Then Pioneer Mine was B.C.'s leading lode-gold producer, with 86,622 ounces of gold in 1933 and 89,786 in 1934. Little Gun Lake Lodge was built for Pioneer mine directors in 1934.



McGILLIVRAY PASS, 1984, where old mining cabins offer shelter to winter-sports devotees, saw prospectors cut original horsetrail to Bridge River gold country in the 1880s, a route present-day hikers can follow to McGillivray Falls, served by B.C. Rail, on the High Line Rd. [See map]



BRADIAN DAZE, 1985, [25] attracted snowmobile enthusiasts to this gold-mining ghost town. Elevation at the Empire Portal is 1234 m [4112 ft.], where 26 Bralorne Mine claims were transferred to establish Bradian Mine in 1934. The Empire shaft was sunk to the 1000 level in 1936 to connect these mines' underground workings.



SECRETIVE PREDATORS like the cougar, above, and small relatives the lynx and bobcat, attract hunters to Game Management Units 3-32 and 3-33, separated by the Bridge River. Also hunted here: mule deer, grouse, moose, black and grizzly bear, wolverine, California bighorn sheep, mountain goat and migratory game birds. [Some limited-access hunts, some species closed in some years. Consult hunting regulations]. Licences are available at Gold Bridge Store.



FOUR WHEELERS can reach the alpine from Pearson Cr. Rd. [#4], Taylor Cr. Rd. [past #16], Grey Rock Rd. [#18], Hurley Rd. [#17 and 24] and McGillivray [#26].



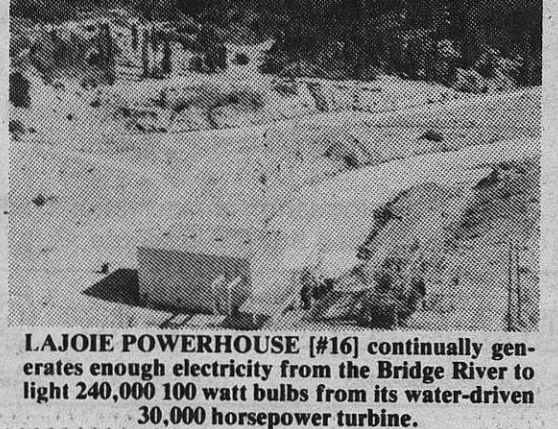
FROM WINDY PASS, powder snow beckons rider towards summit of Taylor Cr. R., [past #6], where old cabin remains from Lucky Strike Gold Mine, 1936.

Glacier Gifts: Placer Gold, Hydro Power

QUESTION: Why is the Bridge River that mysterious, milky-green color? **ANSWER:** Because glaciers at the river's source melt and leave sediment from the ages suspended in the water.

Question: Why did so much placer gold build up where the Hurley River joins the Bridge River? **ANSWER:** Because in prehistoric times the Bridge Glacier stopped the glacier coming down the Hurley and carrying free gold with it.

So, glaciers are responsible for the location of the placer gold, as well as the volume of Bridge River water which flows through four powerhouses to generate nearly \$50 million of electric power for the year 1977, for example.



LAJOIE POWERHOUSE [#16] continually generates enough electricity from the Bridge River to light 240,000 100 watt bulbs from its water-driven 30,000 horsepower turbine.

LaJoie Dam (#16) backs up the reservoir named Downton Lake, after B.C. land surveyor Geoffrey Downton, who suggested the river's hydro-electric potential in 1912.

Travellers along Lillooet-Pioneer Rd. 40 will wonder where the water went when they reach Terzaghi Dam. What appear to be concrete towers above the dam are intake structures where the Bridge River is diverted through Mission Mountain in two long tunnels to powerhouses near Shalalth.

Public Can Pan for Gold
According to Ed Beswick, B.C. Ministry of Mines, the public may pan for gold on Placer Mineral Leases with the owner's permission. However, private property must be respected. At Gold Bridge, the public is welcome to pan along the east bank of the Hurley River (formerly called the South Fork) upstream from the Bridge River, on PMLs 1018, 1016, 1015, and L5474, as far as the Powder Magazine Rd. Access can be gained at Southfork Bridge or from the Powder Magazine Rd., which starts just east (uphill) of the intersection of Road 40 and Haylmore Ave. Gold pans are available at The Valley Hardware. Other necessities: waterproof boots and a spade.

Welcome to the Bridge River Valley

Gold Bridge & District Chamber of Commerce and the advertisers present this brochure about an historic and rugged recreation retreat 168 air-kilometres [105 air miles] due north of Vancouver, B.C.

The map inside pinpoints 30 local spots whose numbers reappear in articles and photo captions on the front and back pages.



RIDERS SAVOR alpine wilderness in high pass of Chilcotin Mountains

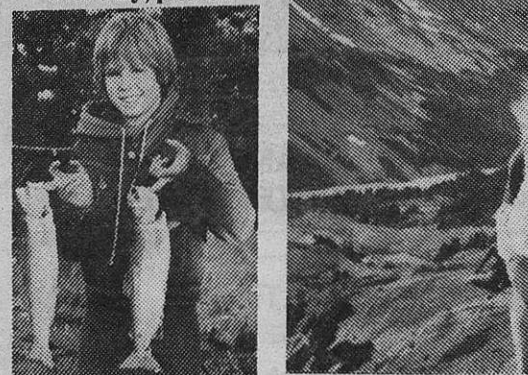
High Country Lures Riders

A vast mountain recreation region stretches beyond the wildflower-strewn grasslands of Gun Creek (#5,7 and 8) west to the Bridge Glacier and north to the Chilcotin Plateau.

Because it has been gold country, it is laced with trails ideal for family backpackers or trail-riders.

Hunting and fishing are unsurpassed.

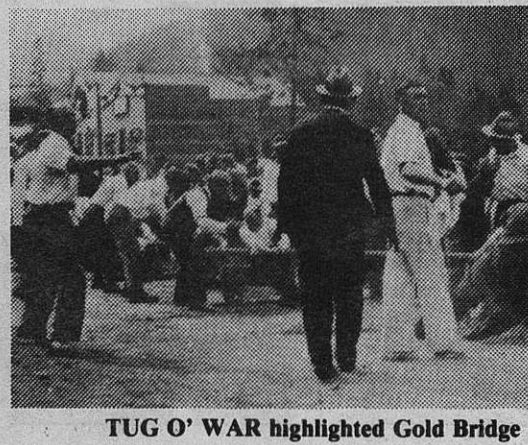
SRUCE LAKE [below] yields nice rainbows but, flies only, please!



DESCENT FROM DEER PASS drops toward Warner Lake at headwaters of Cun Creek [#8].

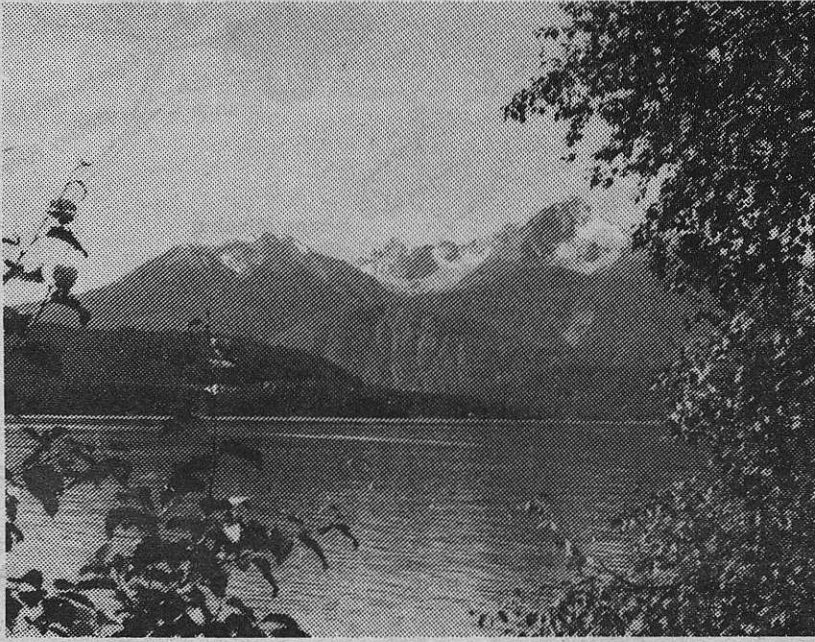
Cheers to Frontier-Style Sports Day

Gold Bridge and Bralorne boomed into raw frontier towns when the price of gold rose in the early 1930s. The 1935 Voters Lists show Bralorne Mine, 369; Gold Bridge, 321; Lillooet, 364; Minto, 146; Pioneer Mine, 345; and Tyauthton, 15.



TUG O' WAR highlighted Gold Bridge Sports Day, 1939.

Gold Bridge and Bralorne



MOUNTAINS TOWER over Gun Lake [#12, 13 and 14].

B R V Lakes, Streams Abound with Fish

The Bridge River Valley's unpolluted lakes and streams abound with fish, including rainbow or brown trout, Eastern brook trout, kokanee, Dolly Varden and whitefish.

Day-trips to many fishing spots can start from either Gold Bridge or Bralorne. Additionally, the Forest Service maintains a host of recreation sites on major lakes, where picnic tables and pit toilets are provided for campers.

No motors are allowed on LaJoie Lake. However, nearby Gun Lake (#13) is big enough to handle powerboats to-

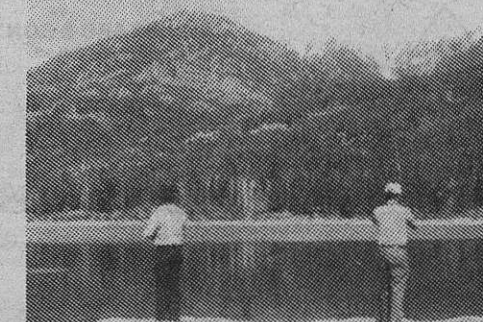
wing water skiers, as is Tyauthton Lake (#6). However, most lakes are better suited to the family rowboat or inflatable raft.



BIG "DOLLIES," which include two weighing 3.6 kilo [8 lbs] were caught where Gun Creek empties into Carpenter Lake. Nearby was the former location of Minto City, built by "Big Bill" Davidson to house employees of the hardrock Minto Gold Mine, operational by 1933. Today, Forest Service maintains a campsite beside the creek. [#8].



SPLASHING YOUNGSTERS use Tyauthton Lake [#6] to cool off on hot August day



FISHERMEN CAST for pan-sized rainbow trout in Liza Lake, accessible [past #6] on circle route from Tyauthton to Marshall Lakes [see #1]. Forest Service maintains nearby recreation sites at north end of Marshall Lake and also at Carol Lake.

conditions should be consulted. Licences are available at Gold Bridge Store.



KINGDOM LAKE Recreation Site [#22] gives family camping access to chain of lakes, where rainbow trout flourish, along western flank of Mt. Fergusson.

Annual Summer Events Planned

Summer's long weekends will see the annual ball tournament July 1 weekend at Bralorne and Gold Bridge Daze B.C. Day Weekend in August.

Concession food will be available. Profits help Bralorne's Volunteer Fire Dept. and Community Club. BC Day weekend events will centre at Gold Bridge, starting with a "Main Street Parade" Saturday morning and including horse races, children's and over-50 events, loggers' sports, tug o' war, raffle, bingo and beer garden. Music will be live for Saturday's open-air dance at the skating rink, followed by a pancake breakfast Sunday and canoe race Monday. Profits support the Gold Bridge Community Club.

BRALORNE MUSEUM
(in the school)
July - August open 6 days
10 a.m. to 5 p.m.
Closed Wednesdays