

675535  
82E/4

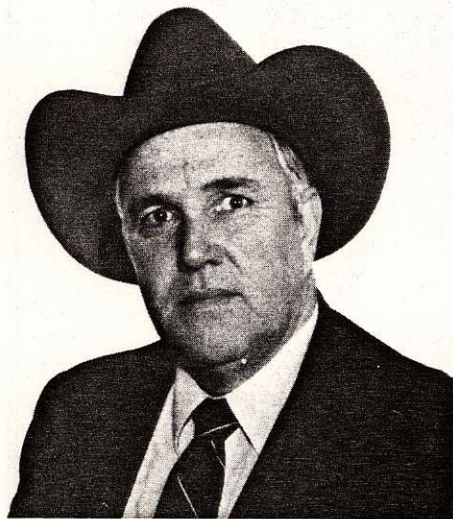
# Highland Valley Well Located In Fairview And Franklin Gold Camps

Highland Valley, a recent listing on the Vancouver Stock Exchange, has assembled a pair of very interesting properties in the Fairview and Franklin gold camps.

The Fairview Camp is four miles west of the town of Oliver, B.C. and 25 miles west of Hedley, B.C. where Mascot Gold is preparing for production on its massive open pit-lode gold mine. Gold was first located in the late 1800's and small scale mining took place for a number of years. In the early thirties a number of mines were put into production, these included the Stemwinder, Susie, Fairview and Morning Star.

Highland Valley has acquired a ten year renewable lease on both the Susie and Stemwinder Mines from the Fairview Mining Company Limited, a division of ASARCO. The main vein of the Stemwinder property has been subjected to over 13,000 feet of drilling and the results suggest a potential, so far, of 750,000 tons of gold and silver bearing quartz. The zone is estimated to be 1,500 feet long, 20 feet wide, 300 feet deep and could be open at depth.

Another zone of immediate interest is the Stemwinder's HW3 vein, where limited drilling has intersected significant gold and silver values up to 0.445 ounces



*John Carson, Highland Valley President*

of gold and 0.42 ounces of silver per ton over 2.5 feet and 0.318 ounces of gold and 0.318 ounces of gold and 3.68 ounces of silver per ton over 2.5 feet. Plans call for slashing the adit and drifting on the vein.

With the technological advances in tank and heap leaching, the Fairview camp is an interesting mining target. The mineralized veins in this area are persistent in strike length and can increase in width to 50 feet or more. Located in the

sunny Okanagan region, the camp has the right climate, degree of precipitation, vein size and ore grade for a very profitable leach operation. It also enjoys easy access, power, water and the necessary support services for a mining operation.

A more recent acquisition is the 20 unit property in the Franklin Gold Camp, 43 miles north of Grand Forks, B.C.

This part of south-central British Columbia hosts a prolific amount of mineralization and is now being explored or mined by better than 24 major and junior resource companies. Recoverable minerals range from gold and silver to lead and zinc, uranium to platinum. The camp is also well known for its "bonanza" gold deposits, such as at the Union Mine.

Lode platinum is known to exist on several claims in the vicinity of Highland Valley's property and recorded shipments included assays to 0.26 ounces per ton of platinum and values as high as 0.40 ounces have been reported.

Most of today's platinum production is centred in the Soviet Union and South Africa, the concern of ensuring the availability of this strategic mineral and its associated platenoid group metals has spurred many companies to expand their exploration efforts in this direction. ■