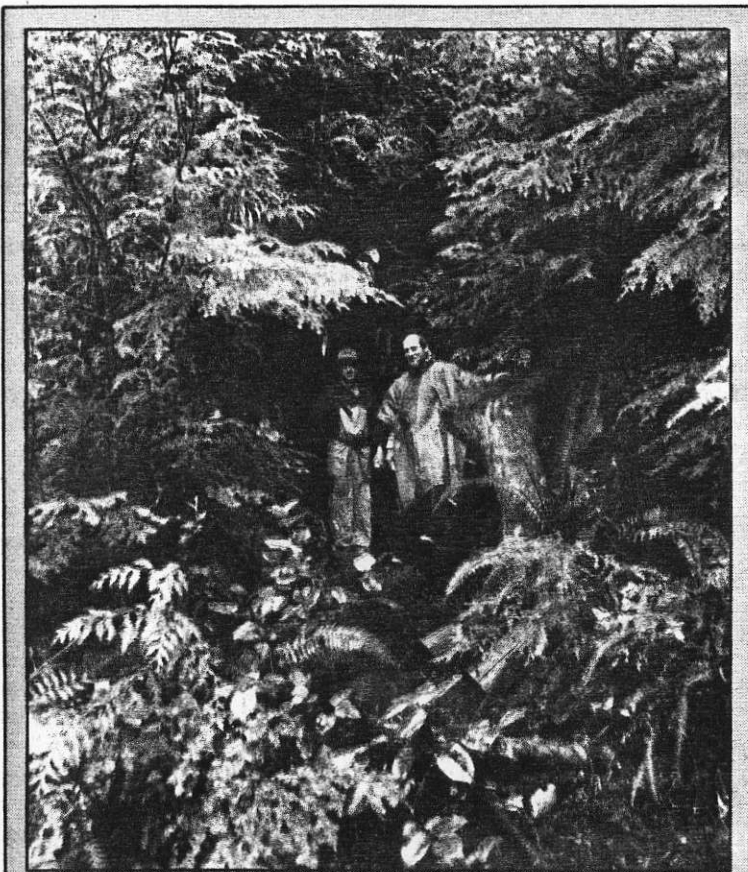


# Tamara anticipates Prosper claims development



Roy Hogarth, left, of Vicore Mining Developments Ltd., and Wayne Ash, vice president of Tamara, examine the upper portal on the Prosper claims, located on the west coast of Vancouver Island.

VANCOUVER, BC—Encouraged by recent dump assays at its Prosper mine property on the west coast of Vancouver Island, **Tamara Resources Inc.** is anticipating full-scale development work will begin before the end of April.

Four samples of unsorted broken mine muck totaling approximately 100 pounds were recovered from the upper dump and grade between 0.340 and 1.048 ounces of gold per ton with a weighted average of 0.824 ounces of gold per ton.

Previous sampling of the underground workings has indicated that there is more than C\$1 million in gold in proven reserves and a good possibility of more.

Closed down during World War II, the Prosper mine is 25 miles northeast of Tofino and three miles upstream from the head of Bedwell Sound.

George Krueckl, P.Eng., Tamara's consultant, noted in his report that the mine is in excellent condition with the entire lower level fully tracked. There is no loose ground despite the fact that no support timber or rock bolting was used.

*Continued on page two*

675371

92F/4

## **Tamara Resources**

*Continued from front page*

Krueckl added that due to the strong vein continuity and the strength of the hanging wall, the ore can be mined by inexpensive shrinkage stopping methods.

The access road to the property needs some repair, but can be easily upgraded in a short period of time.

In the near future, **NAGMIN** will publish a feature outlining how Tamara will be putting its "instant mine" into production. ✱

NAGMIN on 25/86