

45°

30'

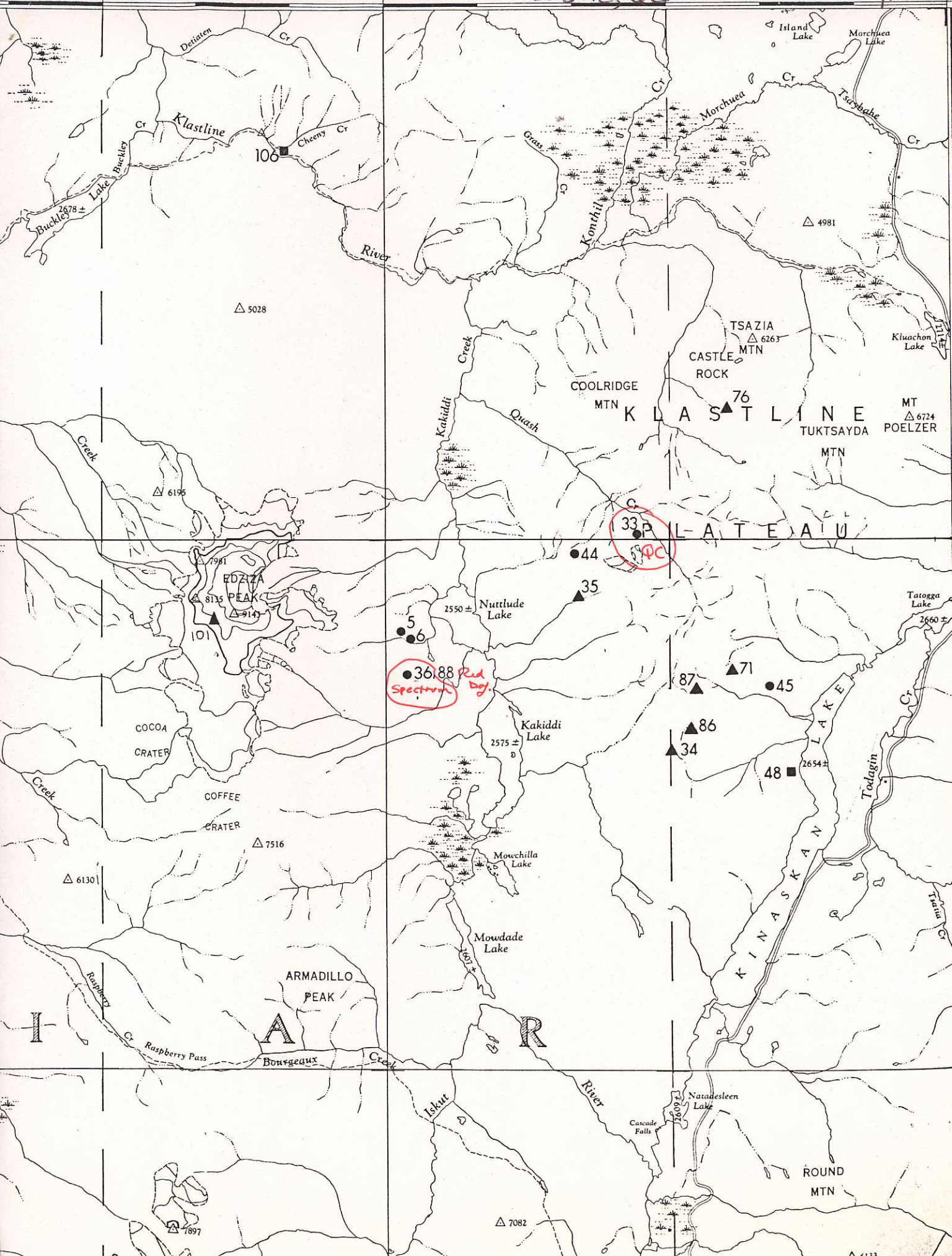
Spectrum, Castle, QC

675180

104G/9

130°00'

58°00'





Data compiled from published and unpublished reports.

Accuracy of location:

- 1 ● known within a radius of 1,000 feet
- 2 ▲ 1,000 feet to 2 miles
- 3 ■ not known within 2 miles

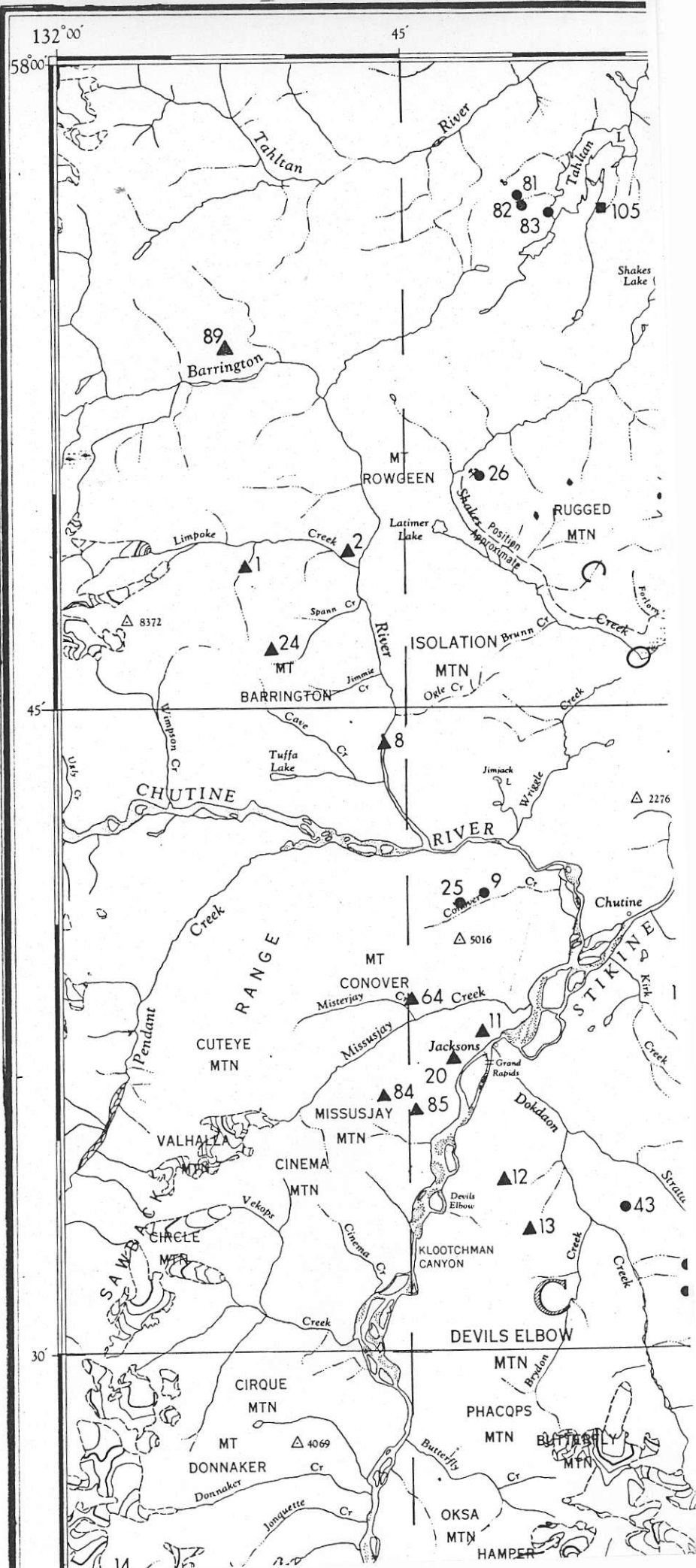
Location and name subject to revision. Data known to be incomplete.

Copies of this map may be obtained for \$1.00 per sheet. Orders for maps should specify the map sheet number and letter. Orders should be addressed, with prepayment, to the

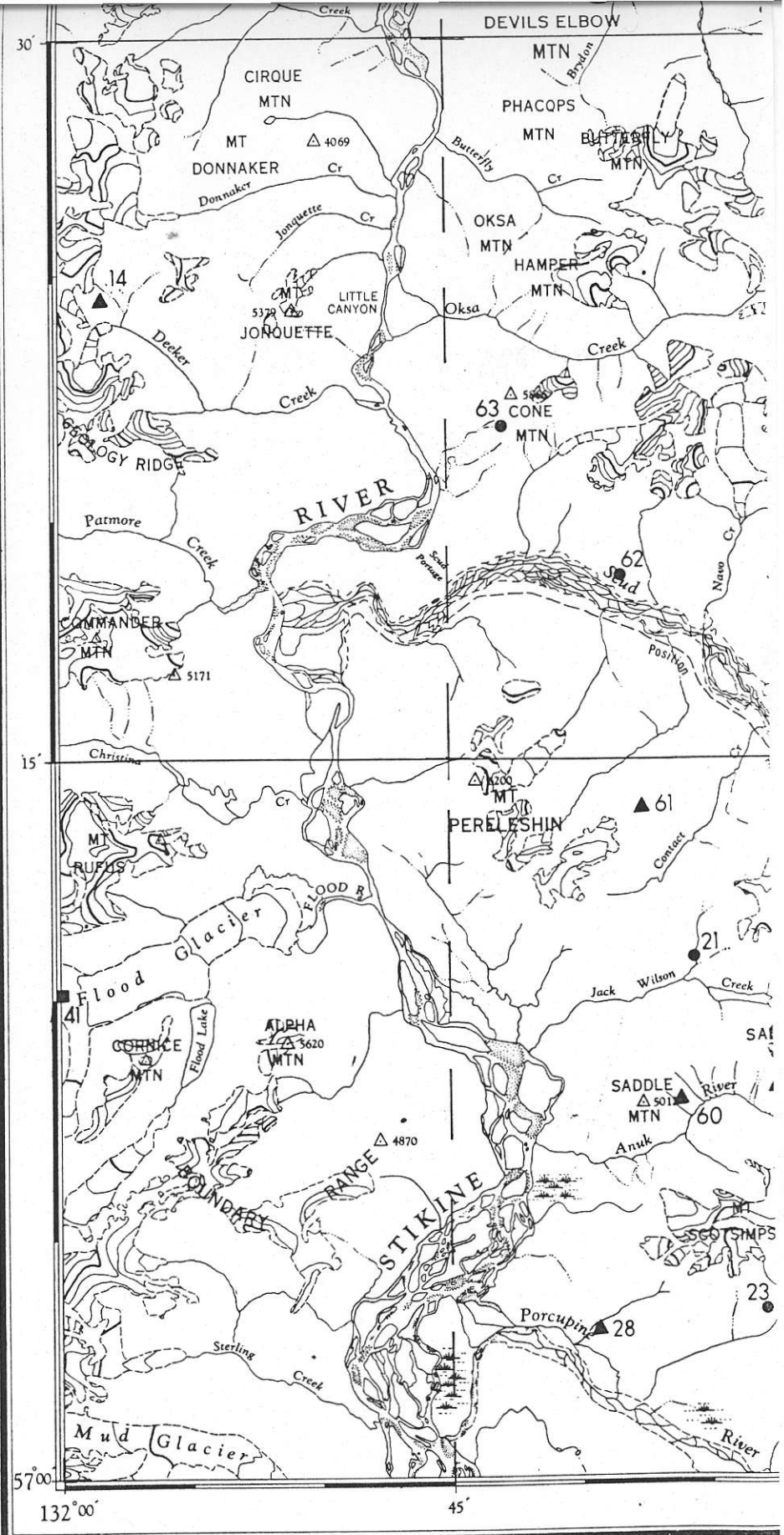
Department of Mines and Petroleum Resources,  
Victoria, B. C. V8X 1S4

Mineral Inventory cards containing specific information on each of the following mineral occurrences are available for viewing on open file according to the map number. Contact the Resource Data Section, Geological Division, Victoria.

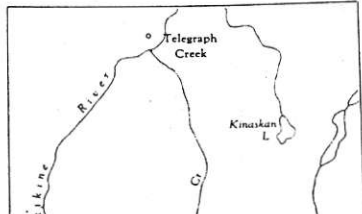
NO.	NAME	PRODUCT (S)
104G-		
1	POKE	Cu
2	GORDON (LIMPOKE)	Cu, Mo
3	GLENORA - KING	Cu, Au, Ag
4	BUCKS BAR	Placer Au
5	KLASTLINE 4 (KONA)	Au, Ag, Pb, Zn
6	KLASTLINE 5 (KONA)	Au, Ag, Pb, Zn
7	CALLBREATH (R, RM)	Cu
8	BARRINGTON RIVER	Placer Au
9	JACKSON	Ag, Pb, Zn, Cu
10	AUGUST	Au, Cu
11	DRAPICH	Cu, Fe
12	STIKINE - DEVILS ELBOW (PEACH, APRCOT; LOBE)	Cu, Pb, Zn, W
13	APEX	Cu
14	BEN (DECKER CREEK)	Mo
15	LIARD COPPER (BIRD - SNO)	Cu, Mo
16	STIKINE COPPER (HAB)	Cu, Ab, Gy
17	PENNY, COPPER CANYON	Cu
18	MARY - GREG (BALL CREEK)	Mo
19	MOUNTAIN GOAT (KIRK COPPER)	Cu
20	STIKINE COPPER (LUCKY STRIKE)	Au
21	JW	Cu
22	SPHAL 17 (GOAT, KIM)	Cu
23	ANN (SO, SPLIT CREEK)	Cu
24	NEW LIMPOKE (CO)	Cu, Mo
25	LADY JANE	Ag, Pb, Zn, Cu
26	MH (SNAKES CREEK)	Fe, Ti
27	BAM - BIG A	Cu, Ag
28	RM	Cu
29	SPHAL 27 (GOAT, KIM)	Cu
30	NABS 21	Cu
31	NABS 13	Cu
32	NABS 30 FR.	Cu, Mo
33	QC (QUASH CREEK)	Cu
34	GJ (GOAT CREEK)	Cu
35	SF (NUTTLUDE LAKE)	Ag, Pb, Zn, Cu, barite
36	SPECTRUM	Cu, Mo
37	HICKS, PEPSI, BOY	Cu
38	LLK	Cu, Ag, Au, Mo
39	DOK 35	Cu, Mo, Pb, Ag
40	RUN	Cu
41	FLOOD GLACIER	Mo
42	ME, ROG	Cu, Mo
43	DOK (THELMA, DON)	Cu
44	AL	Cu
45	WOLF	Cu
46	JAY, C	Cu
47	JOAN, MB	Cu
48	AVON	Cu
49	BIK (MESS CREEK)	Cu, Ag, Mo, Pb, Zn
50	PENNY (RACKOT SYNDICATE)	Cu
51	CW	Cu
52	PH	Cu
53	SOUTH SCUD	Cu



42	ME, ROG	Cu, Mo
43	DOK (THELMA, DON)	Cu
44	AL	Cu
45	WOLF	Cu
46	JAY, C	Cu
47	JOAN, MB	Cu
48	AVON	Cu
49	BIK (MESS CREEK)	Cu, Ag, Mo, Pb, Zn
50	PENNY (RACICOT SYNDICATE)	Cu
51	CW	Cu
52	PH	Cu
53	SOUTH SCUD	Cu
54	MOUNT HICKMAN	Asbestos
55	MIDDLE SCUD	Cu
56	NORTH SCUD	Cu
57	DOC	Cu
58	TSIKHINI CREEK	Au
59	HORN	Cu
60	DEVILS CLUB	Cu
61	PERELESHIN	Zn
62	COS	Cu
63	CONE MOUNTAIN	Cu, Fe
64	CONOVER MOUNTAIN	Cu
65	KIRK CREEK	Fe
66	STIKINE EAST	Cu
67	STIKINE NORTH	Cu
68	NH	Cu
69	OP	Cu
70	GREG	Cu, Mo
71	ART	Cu
72	BALL CREEK	Placer Au
73	MESS, MEST, JET, DELL	Cu
74	PR	Cu
75	GU	Cu
76	JO	Cu
77	C	Cu
78	ARC	Cu
79	LITTLE LES	Cu
80	IN	Cu
81	VB 20	Cu, Fe
82	VB 5	Cu, Fe
83	VB 12	Cu, Fe
84	MISSUSJAY MOUNTAIN	Cu
85	MISSUSJAY MOUNTAIN EAST	Au
86	GOAT HORN, MISTY MTN	Cu
87	SUN	Cu
88	RED DOG	Zn, Pb, Au, Ag, Cu
89	LLC	Mo
90	HAWK-BEAVER	Cu
91	GALORE CK-JUNCTION DEPOSIT	Cu
92	GALORE CK - NORTH JUNCTION	Cu
93	GALORE CK - WEST RIM	Cu
94	GALORE CK - BUTTE	Cu
95	GALORE CK - SOUTHWEST	Cu
96	GALORE CK - SADDLE	Cu
97	GALORE CK - WEST FORK GLACIER	Cu
98	GALORE CK-SOUTH BUTTE	Cu
99	GALORE CK - SOUTH 110 CK	Cu
100	GALORE CK	Ba, Fl
101	MOUNT EDZIZA	Pe
102	GALORE CK LS	Ls
103	YEHINKO CK	Pg
104	ISKUT R	Ls
105	TAHLTAN LAKE	Ls
106	KLASTINE R	Ls



THE DECLINATION OF THE COMPASS NEEDLE, 1954



Surveyed, compiled, drawn and printed by the ARMY SURVEY E  
 Aerial photography by the R.C.A.F., 1949.  
 Minor revision, 1969 by the Department of Energy, Mines and Resources, Ottawa  
 Universal Transverse Mercator Projection

REFERENCE

Road, Hard Surface, All Weather...	More than 2 Lanes	Route No. 2	Lanes
... Loose Surface, All Weather...	2 Lanes	Wide or More	