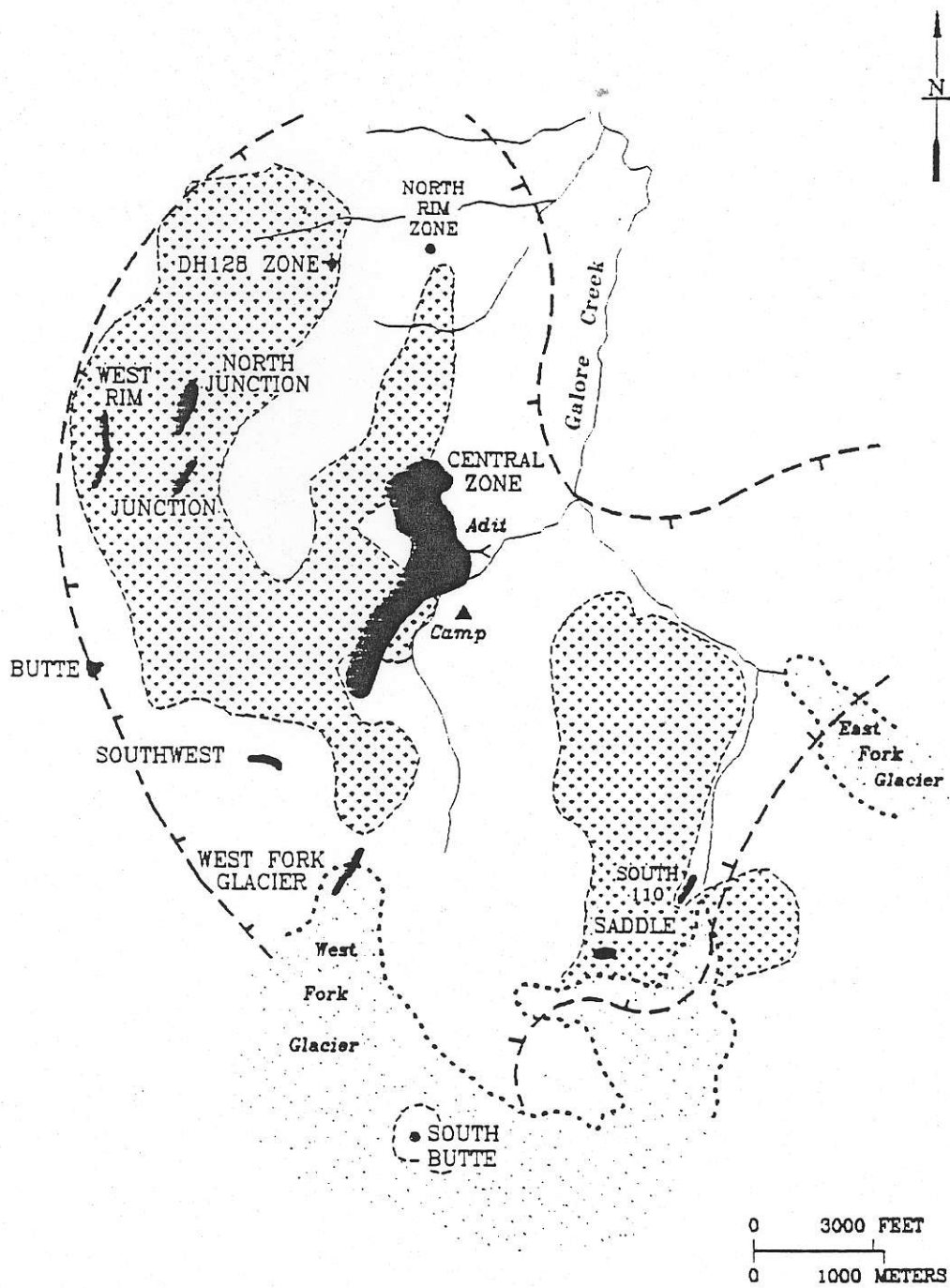



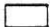
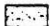



FEATURES:

- Porphyritic syenite sill and dyke complex of probable Early Jurassic age within alkaline volcanic complex
- Major high grade Cu-Au deposit, Central Zone, and significant smaller zones *Zinacdi*
- Intense potassic and calcic alteration

QUESTIONS:

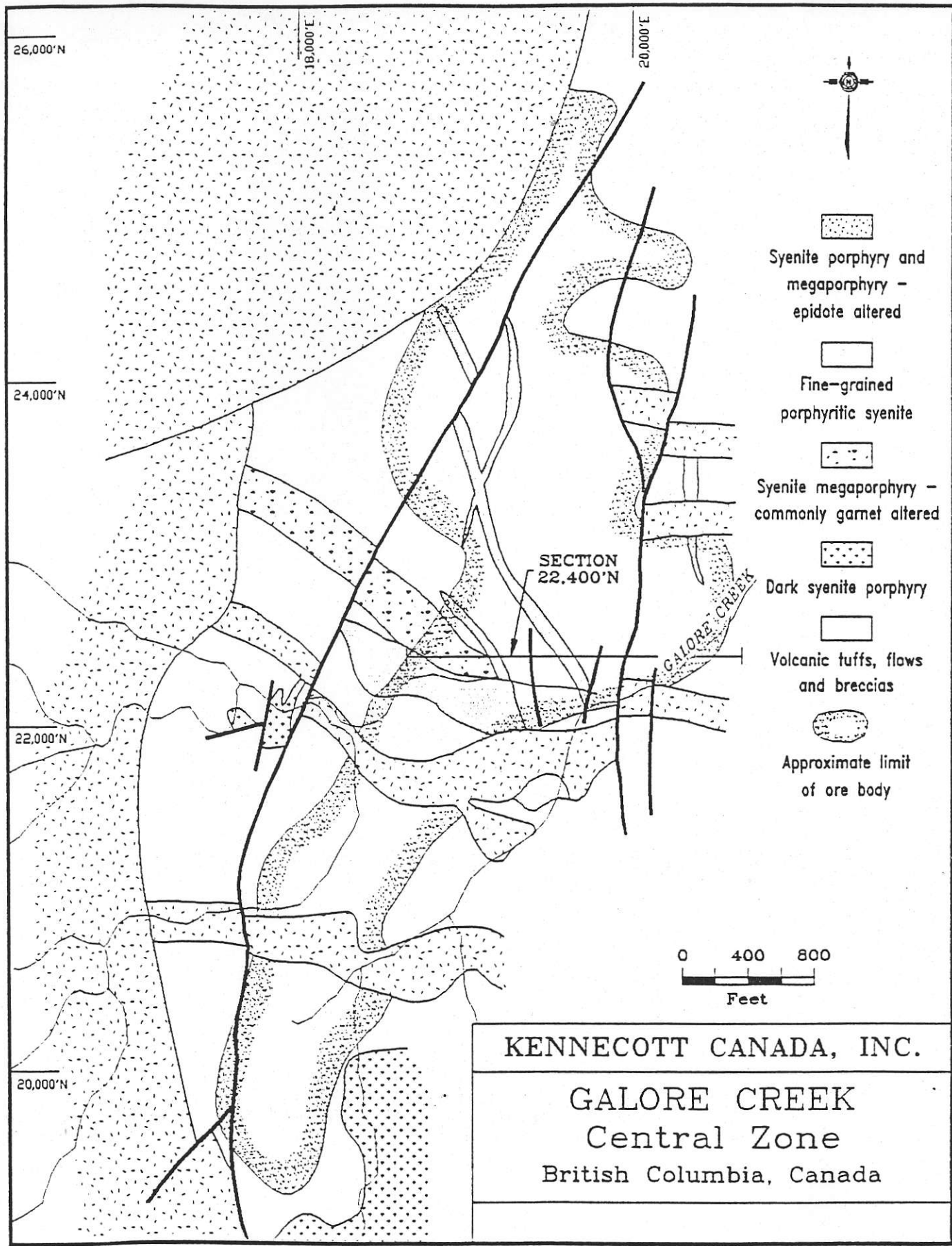
- Age of volcanics, intrusions and mineralization?
- Depth of emplacement? *is it high level, if so why no advanced argillic altⁿ.*
- Petrogenesis of igneous suites? *cordierite, pseudoleucite xls*
- Reasons for high grades? *some decoupling*
- Controls on mineralized zones and relationship to alteration? *Carbonate anomaly present. also need comparative data*
- Controls on variable Cu/Au ration?



-  SYENITE INTRUSIVE COMPLEX
-  ALKALINE VOLCANICS
-  SNOW AND ICE
-  OUTER LIMITS OF ALTERATION AND DIKE COMPLEX
-  COPPER DEPOSIT
-  SHOWINGS

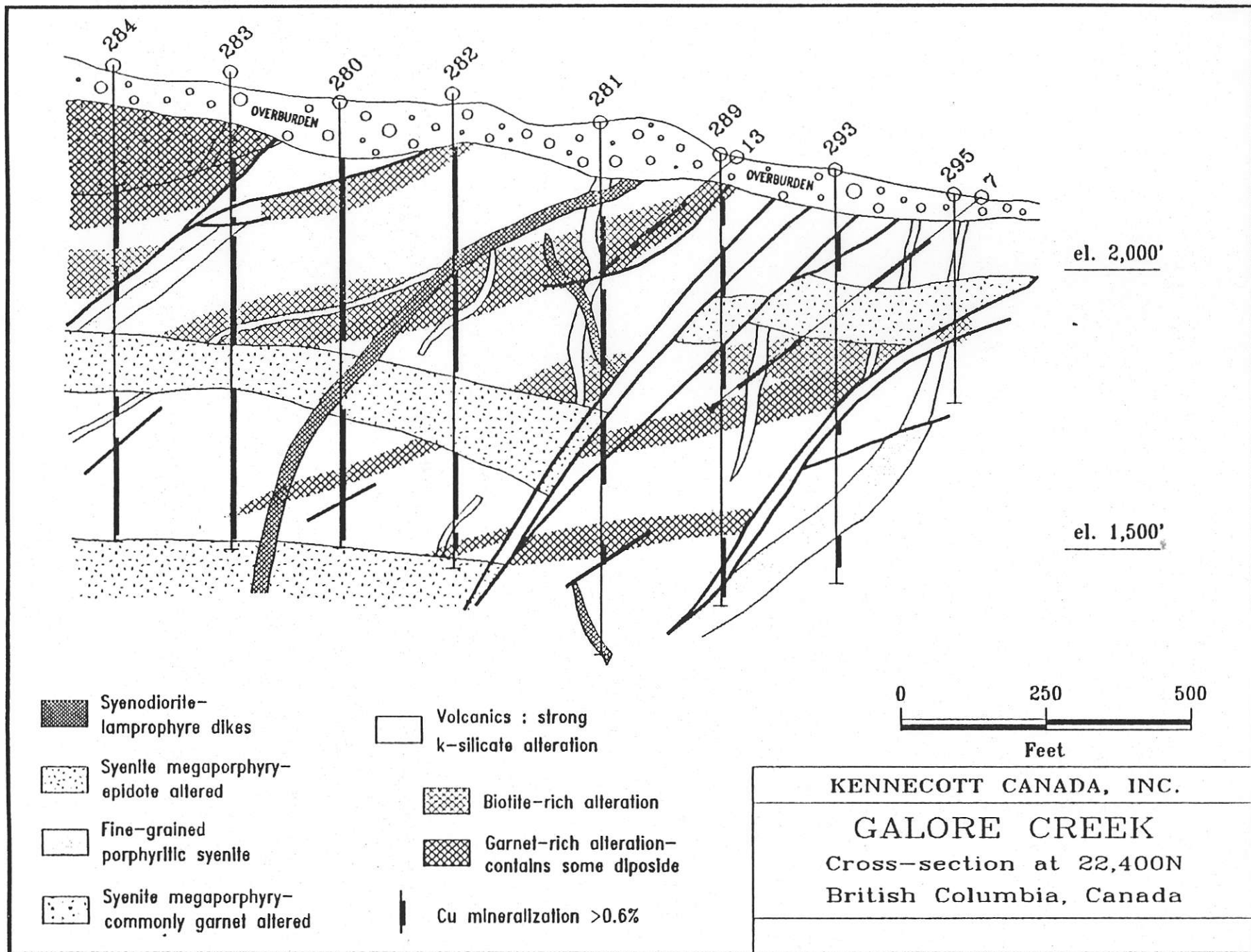
KENNECOTT CANADA, INC. GALORE CREEK NW British Columbia GENERAL GEOLOGY

Are there some -
maybe more br?



KENNECOTT CANADA, INC.
GALORE CREEK
Central Zone
British Columbia, Canada

Siivohle student
in central zone



*garnets related to intrusion phases?
or a primary igneous feature*

Cu-Au PORPHYRY:

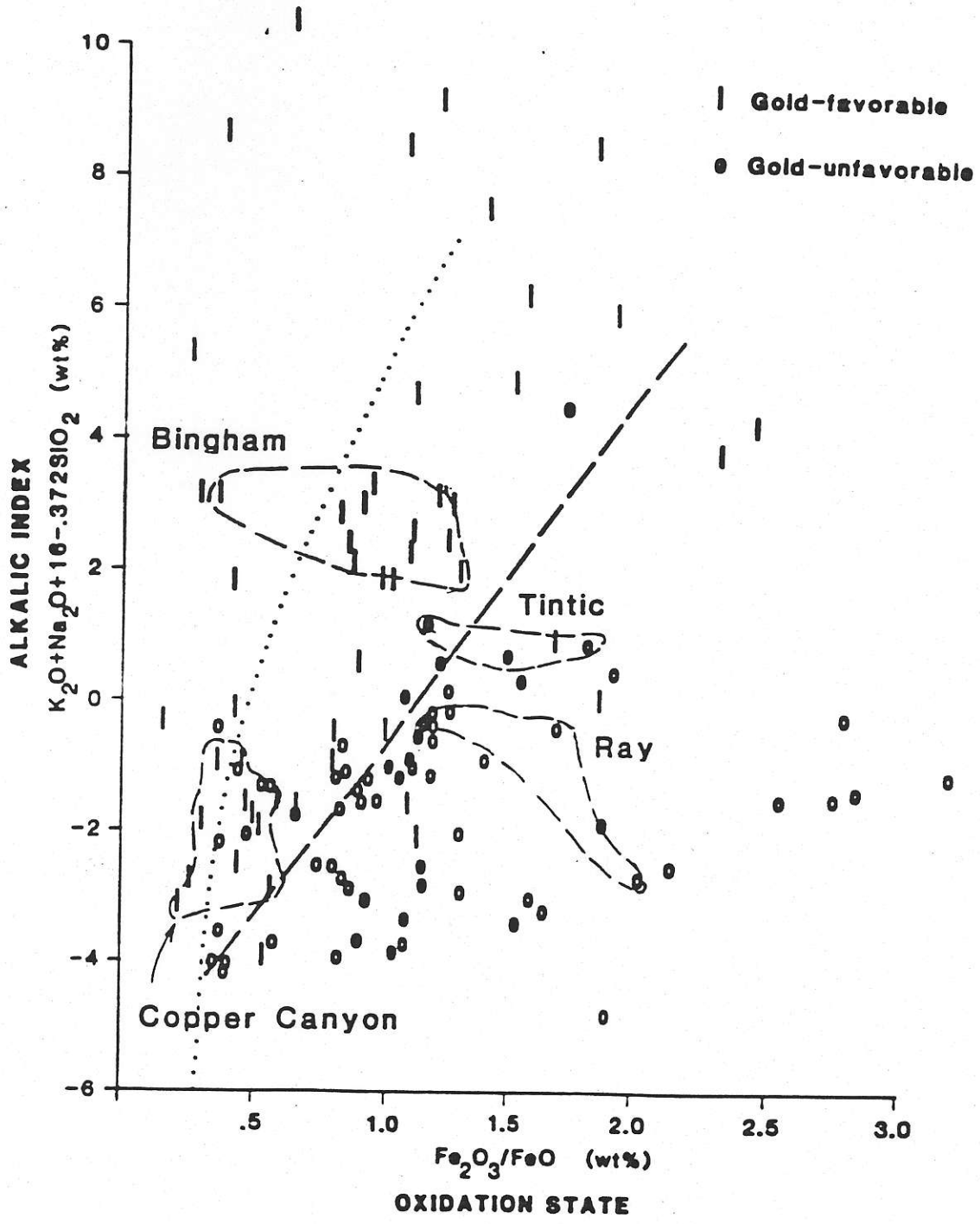
GENERAL PROBLEMS:

- Relationship Of Gold To Alkaline Rocks
FT wants to build a database to compare with calc-alkaline systems.
- Effect Of Oxidation And Sulphidation State
- Fluid Composition In Alkaline Systems
- Timing Of Fluid Saturation vs. Differentiation
- Phyllic Alteration *what is relch to alkaline porphyry systems.*
- High Level Alteration *— mining at Galore Ck.
is it related to fluid composition?*

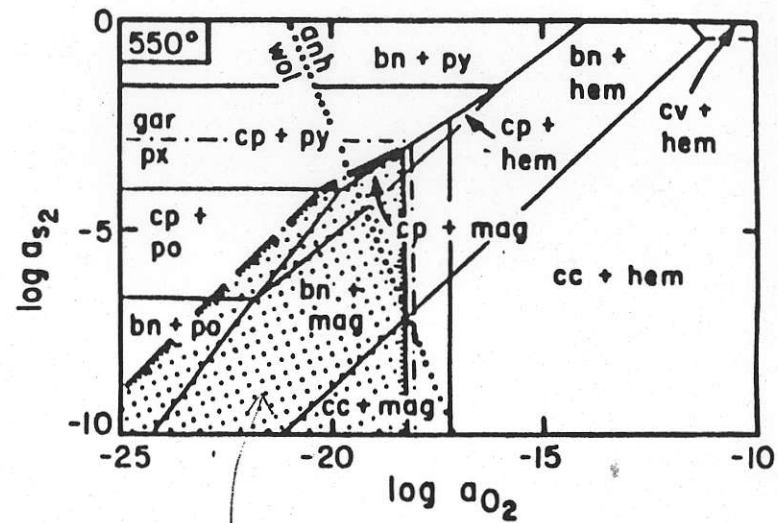
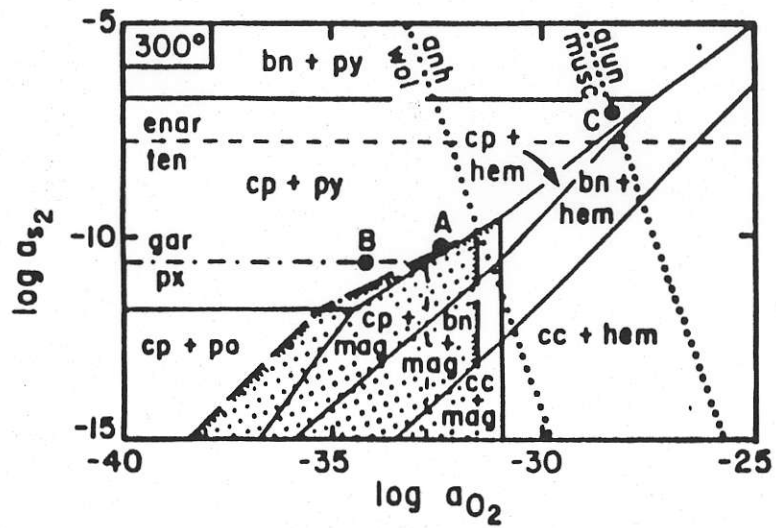
REQUIRES:

- Uniform Porphyry Database *Einandi Kulkarni Sillitoe*
- Comparisons Between Calc-Alkaline And Alkaline Systems

ALKALINITY INDEX vs. OXIDATION STATE PORPHYRY SYSTEMS



*Conclusion - should be assoc of the rich systems with a
 but not all.*



Blotite



K-spar + Fe-oxide/sulfide