

News release

February 18, 1991

EURUS RESOURCE CORP.
No. 35
Trading Symbol: VSE-ERR

THIOS RESOURCES INC.
No. 40
Trading Symbol: VSE-THI

ROCK & ROLL PROJECT - BLACK DOG DRILLING ASSAY RESULTS

Eurus Resource Corp. ("Eurus") and Thios Resources Inc. ("Thios") are pleased to announce precious and base metal assay results for eighteen diamond drill holes on the Rock & Roll Project, located in the Iskut River area of northwestern British Columbia. Thirteen of these holes intersected the polymetallic (gold-silver-lead-zinc-copper) Black Dog Horizon, a massive sulphide deposit discovered in 1990. The Rock and Roll Project is an equal joint venture between Eurus and Thios.

Since renewal of diamond drilling in January, 1991, Eurus and Thios have completed 36 drill holes (RR91-10 to RR91-45) totalling 4,350 metres. Sectional drilling has been undertaken on Sections 52+00N, 51+50N, 51+00N and is currently underway on Section 50+50N where five holes have been completed. Drilling has confirmed the presence of the Black Dog Horizon over a minimum strike length of 250 metres and downdip to 200 metres.

In a prior News Release (Eurus/Thios January 30, 1991) it was announced that once all results for holes RR91-10 through to RR91-23 were ready and received from the assay lab, they would be released. To date, all results to RR91-27 have been received, with the exception (due to shipping difficulties) of a 6.0-metre interval of RR91-22. The table below summarizes the more significant assay results from all thirteen holes which intersected the Black Dog Horizon.

HOLE #	SECTION (Metric)	INTERVAL (Feet)	WIDTH (Feet)	GOLD (oz/t)	SILVER (oz/t)	LEAD %	ZINC %	COPPER %
RR91-13	52+00N (-45)	89.9-105.3	15.4	0.057	11.54	0.42	2.21	0.41
		122.6-129.2	6.6	0.028	6.04	0.65	2.39	0.26
RR91-14	52+00N (-90)	62.0- 68.2	6.2	0.041	1.73	0.39	1.67	0.05
		153.2-166.3	13.1	0.012	1.70	0.20	0.77	0.22
		166.3-176.1	9.8	0.044	0.57	0.02	0.74	0.42
		219.1-222.4	3.3	0.034	4.91	0.43	2.80	1.00
		255.5-258.8	3.3	0.025	4.20	0.41	2.67	0.66

HOLE #	SECTION (Metric)	INTERVAL (Feet)	WIDTH (Feet)	GOLD (oz/t)	SILVER (oz/t)	LEAD %	ZINC %	COPPER %
RR91-15	52+00N (-70)	116.8-126.6	9.8	0.023	4.14	0.17	1.28	0.21
		126.6-134.2	7.6	0.061	15.21	0.88	4.60	1.10
		143.0-148.9	5.9	0.033	10.60	0.79	2.47	0.59
		163.6-170.2	6.6	0.002	0.99	0.20	1.24	0.53
		254.5-257.8	3.3	0.241	0.13	0.01	0.03	0.02
RR91-16	52+00N (-52)	176.8-180.1	3.3	0.018	4.02	0.39	0.99	0.06
		222.7-231.6	8.9	0.020	0.47	0.05	0.45	0.72
RR91-18	52+00N (-71)	157.8-161.1	3.3	0.012	10.50	0.89	3.16	0.39
		210.2-213.5	3.3	0.040	1.30	0.08	1.35	0.58
RR91-19	52+00N (-54)	170.6-180.4	9.8	0.052	9.55	1.52	5.45	0.18
		183.7-187.0	3.3	0.026	4.15	0.75	1.07	0.08
		226.0-232.6	6.6	0.020	1.78	0.15	1.30	0.24
RR91-20	52+00N (-69)	149.9-153.2	3.3	0.001	1.77	0.36	1.17	0.09
		257.8-264.4	6.6	0.010	1.70	0.17	1.50	0.40
RR91-21	51+50N (-45)	63.3- 73.1	9.8	0.062	6.67	0.42	1.43	0.65
		76.4- 70.7	3.3	0.030	2.94	0.21	0.91	0.57
RR91-22 [Incomplete]	51+50N	51.2- 54.8	3.6	0.067	38.90	0.68	1.59	0.31
		88.2- 91.5	3.3	0.013	1.52	0.26	1.56	0.14
RR91-24	52+00N (-75)	138.1-141.4	3.3	0.032	0.06	0.01	0.01	0.02
		169.6-176.2	6.6	0.014	4.05	0.48	1.47	0.10
		189.3-194.5	5.2	0.012	2.22	0.18	0.86	0.14
		256.2-259.5	3.3	0.001	0.90	0.06	0.45	1.00
RR91-25	51+50N (-45)	204.6-211.2	6.6	0.020	1.22	0.10	0.56	0.33
RR91-26	51+50N (-90)	174.8-178.1	3.3	0.018	7.60	0.67	2.19	0.40
		181.4-184.7	3.3	0.008	1.64	0.23	0.99	0.18
		190.6-198.1	7.5	0.010	1.77	0.25	0.85	0.10
		228.9-238.7	9.8	0.459	0.65	0.02	1.26	1.68
		346.0-350.6	4.6	0.007	1.23	0.11	0.55	1.56
RR91-27	51+50N (-69)	193.2-199.4	6.2	0.031	2.34	0.37	1.51	0.48
		207.3-223.7	16.4	0.005	0.47	0.05	0.36	0.41

Holes RR91-15 and RR91-26 returned the highest gold values (0.241 oz/ton gold over 3.3 feet and 0.459 oz/ton gold over 9.8 feet, respectively) from the assaying received to date.

Holes RR91-10 and RR91-11 were collared in front of the Black Dog Horizon due to local topographic conditions, and RR91-12, -17 and -23, which encountered a diorite intrusive, returned no significant results.

The Black Dog Horizon is a stratigraphic sequence hosting several zones of strata-controlled, disseminated to well laminated semi-massive and massive sulphides containing pyrite, pyrrhotite, sphalerite, galena and chalcopyrite. Each zone averages approximately seven metres in width; overall thickness of the Black Dog Horizon is about 25 metres. The mineralized zones are separated by narrow andesitic flow units. All the sulphide intersections occur within 75 metres of surface. To date, drilling has outlined a zone of higher grade mineralization over 250 metres in strike length and at least 150 metres downdip.

For the thirteen drill holes summarized above, on-site observation of the mineralized intercepts compared the core favourably with mineralization seen in holes RR90-1 to RR90-9, completed late in 1990. Assay results confirm this field observation and in general reflect a correlation between the more massive sulphide sections within the Black Dog Horizon and higher precious and base metal values. The disseminated sulphide sections of the Black Dog Horizon correlate with lower, yet elevated and anomalous base and precious metals assay results. A News Release on February 11 by Eurus and Thios stated that there is an indication that total sulphide content is increasing within the Black Dog Horizon in a southeasterly direction. Coincident with the overall sulphide content increase, observations of the most recently completed holes on Sections 51+50N and 51+00N indicate a thickening of massive sulphide intercepts to the southeast. Hole RR91-19 on Section 52+00N encountered a 1.6-metre massive sulphide section at 52.4-54.0 metres; RR91-26 on Section 51+50N encountered 2.3 metres of semi-massive and massive sulphide from 70.6 to 72.9 metres; and on Section 51+00N, RR91-36 and RR91-37 encountered 6.8 metres and 10.1 metres of massive sulphides at 51.8-58.6 metres and 66.9-77.0 metres, respectively. In addition, RR91-36 and RR91-37 are the first holes to contain observable tetrahedrite (a silver-bearing mineral) in the Black Dog Horizon. Chalcopyrite content is decidedly stronger in RR91-36 and RR91-37. However, because of the equigranular nature of the sulphides, it is difficult to estimate the pyrite, sphalerite and galena content.

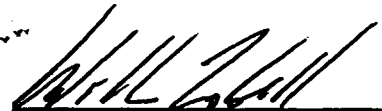
The trend of increased total sulphides and notably thicker sections of massive sulphide mineralization is confirmed by drilling presently underway on Section 50+50N. RR91-43 on Section 50+50N encountered a 4.5-metre thickness of semi-massive and massive sulphide between 24.1 and 28.6 metres, followed by 13.0 metres of semi-massive sulphides with a noticeable increase in sphalerite content.

Since discovery by prospecting of the original Black Dog Showing last summer, exploration of the Rock & Roll property has focused on finding the limits of the mineralization through a comprehensive programme of mapping, trenching, soil sampling, airborne and ground geophysical surveys and diamond drilling. The starting point for drilling was in the vicinity of the original prospecting discovery near Section 52+50N. Drilling has proceeded on 50-metre section lines in a southeast direction and as yet has not cut off the Black Dog Horizon along strike or at depth. The geophysical signature of the horizon has been traced by IP, horizontal-loop EM and VLF-EM surveys for over 1,300 metres from line 55+50 to line 43+50N.

The Black Dog geophysical signature is also part of a group of airborne EM conductors hosted by similar geology that extends over 7,000 metres. This package of EM conductors can be traced to the northeast on the Rock & Roll property to north side of the Iskut River, and to the southeast through the Bornagain Property of Eurus, Thios and Consolidated Bel-Air Resources. Only 250 metres of this prospective geological trend has been drilled to date, such that greater than 95% of this target remains untested. In addition, other geophysical targets outside the geology hosting the Black Dog Horizon elsewhere on the Rock & Roll property have not been drilled.

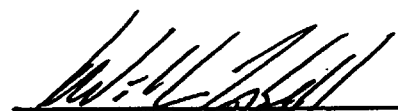
Eurus is Operator of the Rock & Roll and Bornagain Projects, and has contracted with Prime Explorations - a division of Prime Equities Inc. for management and consulting services on the Iskut River projects.

ON BEHALF OF THE BOARD
OF DIRECTORS

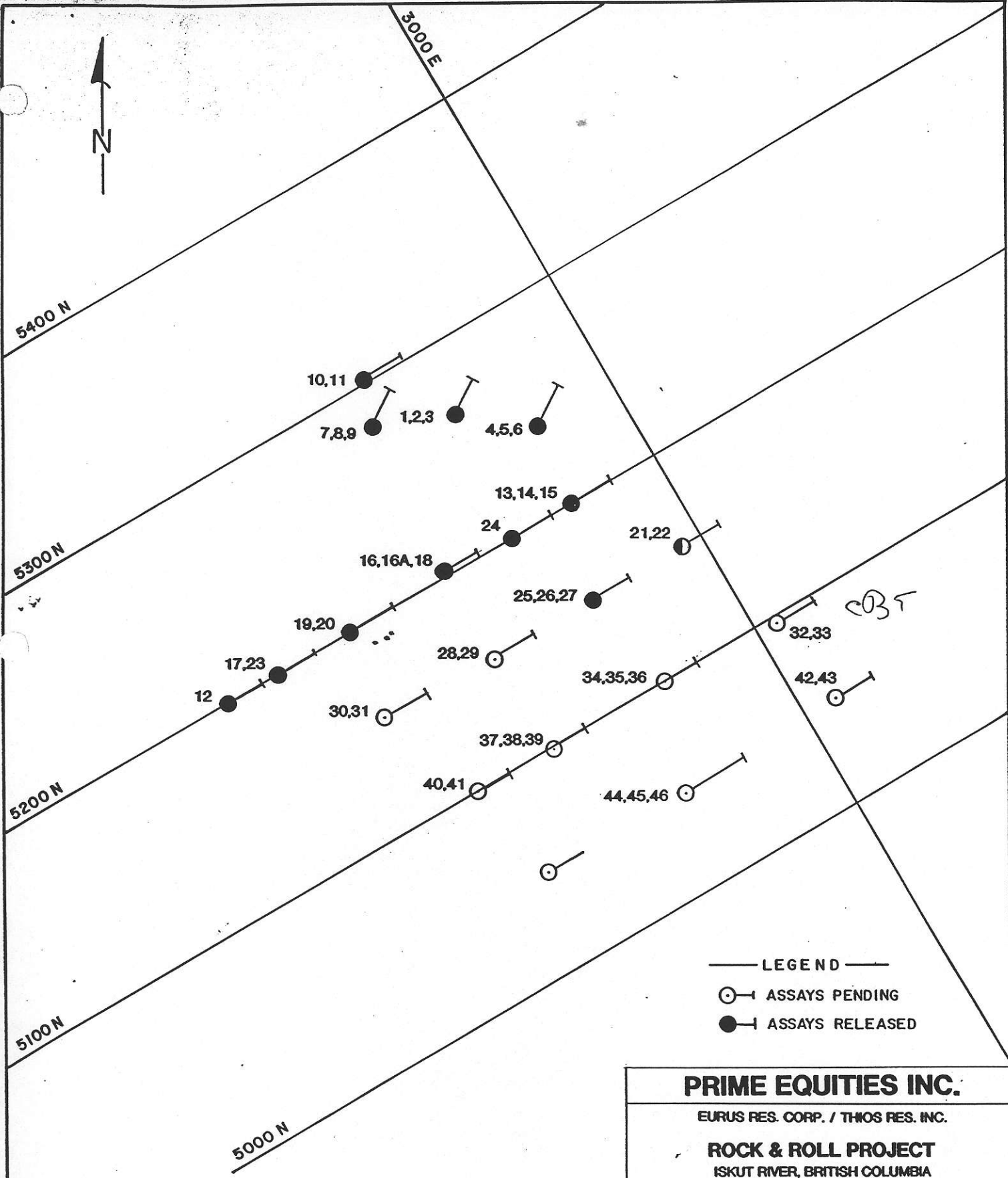


William Campbell, Secretary
Eurus Resource Corp.

ON BEHALF OF THE BOARD
OF DIRECTORS



William Campbell, Secretary
Thios Resources Inc.



- LEGEND —
- ASSAYS PENDING
 - ASSAYS RELEASED

PRIME EQUITIES INC.

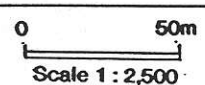
EURUS RES. CORP. / THIOS RES. INC.

ROCK & ROLL PROJECT
ISKUT RIVER, BRITISH COLUMBIA

DRILL PLAN
(Unsurveyed Collar Locations)

Date: February 18, 1991

Drafted by: E.R.



NOTE: While we believe this information to have been obtained in accordance with standard industry practices, we make no representation with respect to, nor do we assume any responsibility for the correctness thereof.

PRIME EXPLORATIONS LTD.