

QR

Rob Cameron

Fax 675048 Feb 26/91
93A/6W

Brown Bay ore

QR Au rich type Cu As Zn Ag Pb Sb Bi anomalous
dominant by copper Au simple zoned into diorite - 7 samples
possible - hybrid Au in anker limit at alpha

Revised

Mean 541689 tonnes

Median 275607

Went 140 817

Total 958 184 6.36 dilute 26.1%

Tons 1,207 366 5.22

Total Mean 1,122,000 3.5

Median 332,000 5.87

* PGR values below detection 156 tons 9.72
limit on grab of prospects are.

Quant Trough is symmetrical.

Basal anoxic zone

oolitic basalts, Ruv pelbows, no vents

oolitic host breccias epibasalts, small but
or long oolitic breccias at its base
oolitic augite basalt

Basal

Basal pyrite at QR possibly pre-oxidized
in carbonate unit, carbonaceous
massive carbonate - pyrite rock.

Walls of propylitized volcanics, around drive stack.
red-col-chl-gt-py replacement basalt

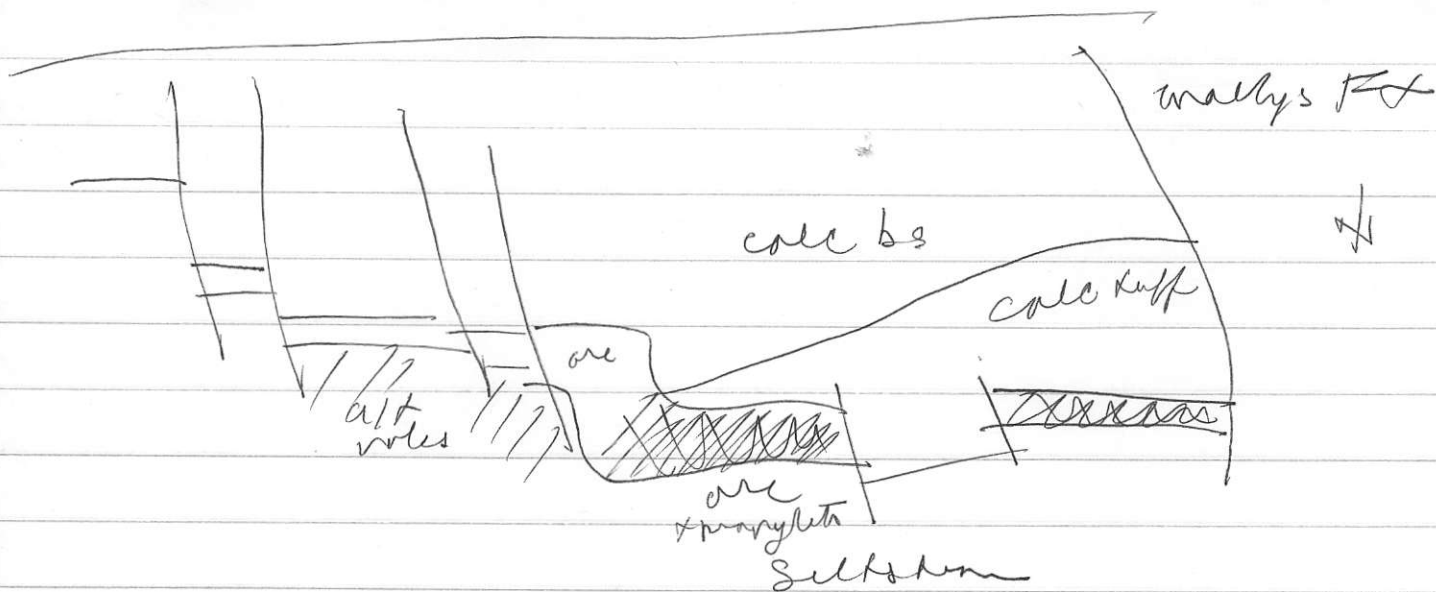
Massive propylite unit hosts most ore

massive carbonate -> massive propylite

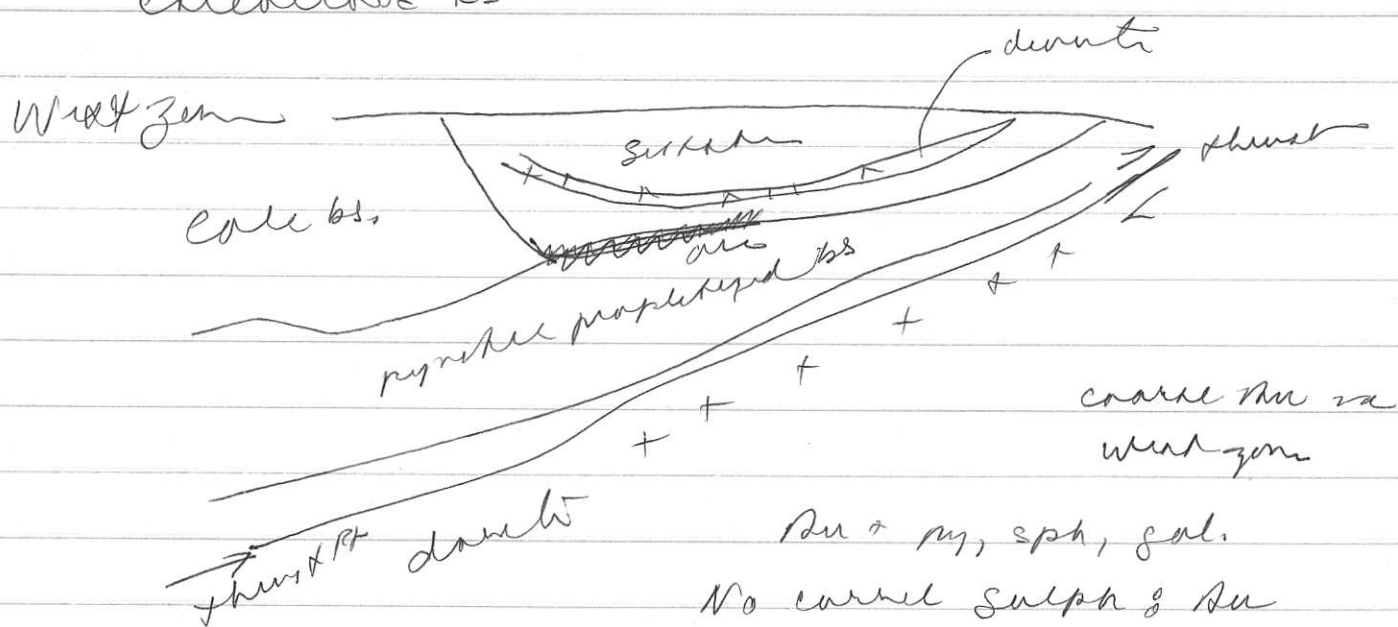
Siltstone hard, but no silver introduction -
- may be alkalized - not treated



Plan



Best Au grades near alpha front, of anath
 extensive bs.



* but min 2-3% pyrite needed
 2-3 cm bands of mt + Au, epy only noted with
 massive sulphide "pods" in mid west zone. (+ epid-chlorite)
 Au & Cu as carried. Mam zone 1% Cu
 Similar other zones.

Soil geochem

Au in soil works well 125-300 ppb within ore
 As more widespread, Cu very ore specific
 Calc Dem biochem - some anomalies
 propylite has decreased alkalies, increased Fe

$\delta^{18}O$ Don workman C, O calcite same alt &
 melt rocks.

$\delta^{34}S$ propylite pyrite - 3 to -7 melt -1, 0

Contm CK - new prospect. produce core, propylite
 flood + Au, talc dykes cut poles
 Also 66 zone.