

in the report "Geological, Geochemical and Geophysical Report on the FOX 1-6 Mineral Claims, Deception Creek Area, B.C." by D.W. Ridley, submitted as part of the Prospectors Assistance Program in December, 2000. Figures 2 and 3 are from this report. On July 12, 2001, D.W. Ridley entered into an option agreement with Starcore Resources Ltd. for their acquisition of 100% interest in the FOX claims.

No previous work has been recorded for the area of the FOX claims. Mattagami Resources staked claims on Deception Mountain and carried out a program of prospecting and geochemical sampling in 1981 and 1982. A previously unmapped granitoid intrusion was mapped near the peak of the mountain, and W soil geochemical anomalies were detected associated with granite contacts (Assessment Report No. 10,641).

The Boss Mountain mine of Noranda Exploration Company produced 2.97 million tonnes of ore from the open pit at average grade of 0.26% Mo between 1965 and 1971. After a shutdown, it produced an additional 3.60 million tonnes of ore grading 0.19% Mo between 1974 and 1980, then closed permanently in 1982 after a brief period of underground production. A resource of 7.4 million tonnes of material grading greater than 0.1% Mo remains. The townsite at Hendrix Lake remains habitable.

The Silence Lake or Dimac W skarn mine of Dimac Resource Corp., located 32 km northeast of Clearwater, produced for one year (1982), treating 18,350 tonnes of ore at average grade of 0.57% WO_3 and recovering 104.7 tonnes of W.

GEOLOGICAL SETTING

The FOX claims are underlain by metasedimentary rocks of the Late Proterozoic-Early Paleozoic Snowshoe Group, part of the Kootenay Terrane of displaced and deformed North American shelf sedimentary rocks. Lithologies on the claims include quartz-biotite schist, calc-silicate schist, marble and gneiss. Metasediments are cut by muscovite-biotite granite, plus sills and dykes of aplite and pegmatite. Kootenay Terrane is in fault contact with the mainly Triassic arc volcanic rocks and coeval intrusions of Quesnel Terrane to the west, that host a suite of important alkalic porphyry Cu-Au deposits including Mount Polley. Kootenay Terrane is overthrust by ophiolites of Slide Mountain Terrane, that include the Redfern Ultramafic Complex of Late Paleozoic amphibolite, gabbro and dunite that bounds the claim group on the east (Figure 2). Recent olivine basalt flows extend southwestward down Spanish Creek valley from the Flourmill Volcanos in Wells Grey Provincial Park east of Mahood Lake.

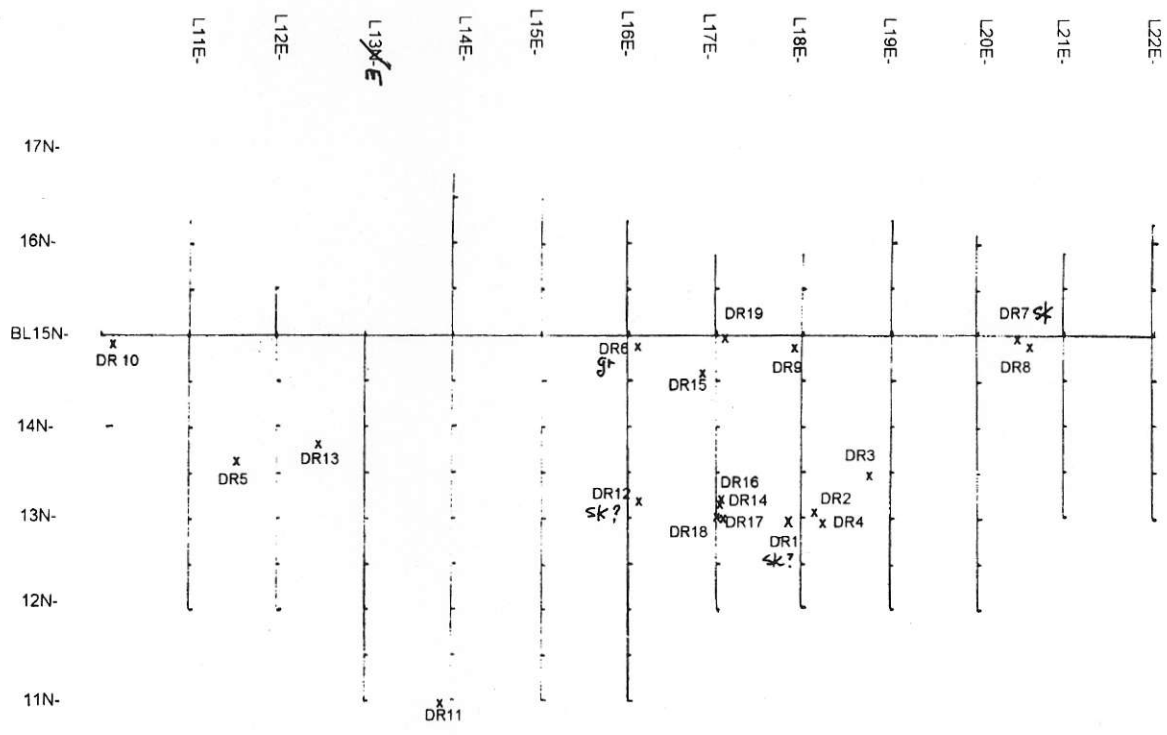
Intrusive rocks on FOX claims are believed to be part of the Bayonne Suite of Cretaceous, felsic, calc-alkaline, S-type granitoids that intrude mainly Kootenay Terrane rocks from southeastern to east-central B.C., and are correlative with the Selwyn Plutonic Suite that hosts Cantung and Mactung W skarns in eastern Yukon. The Raft and Baldy batholiths to the south are felsic granitoid plutons of mid-Cretaceous age and Bayonne affiliation. Bayonne Suite plutons typically display a Mo-W-F-Sn-B-Bi metallogeny, e.g. Salmo and Trout Lake.



PLATE 1 Medium grained muscovite-biotite granite cut by 40 cm pegmatitic quartz-muscovite-pyrite vein. Located on road 7200 at 15N; 16E. Ridley sample DR-6 contained 655 ppm Mo.



PLATE 2 Hand trench located on south side of road 7200 at 15N; 20.5E. Interbedded quartz-biotite schist, marble and skarn are cut by a 1 m aplite sill with pegmatitic margins, at hammer. Ridley samples DR- 7 and 8 yield best assays of 0.17% W, 0.02% Mo and 0.05% Zn.

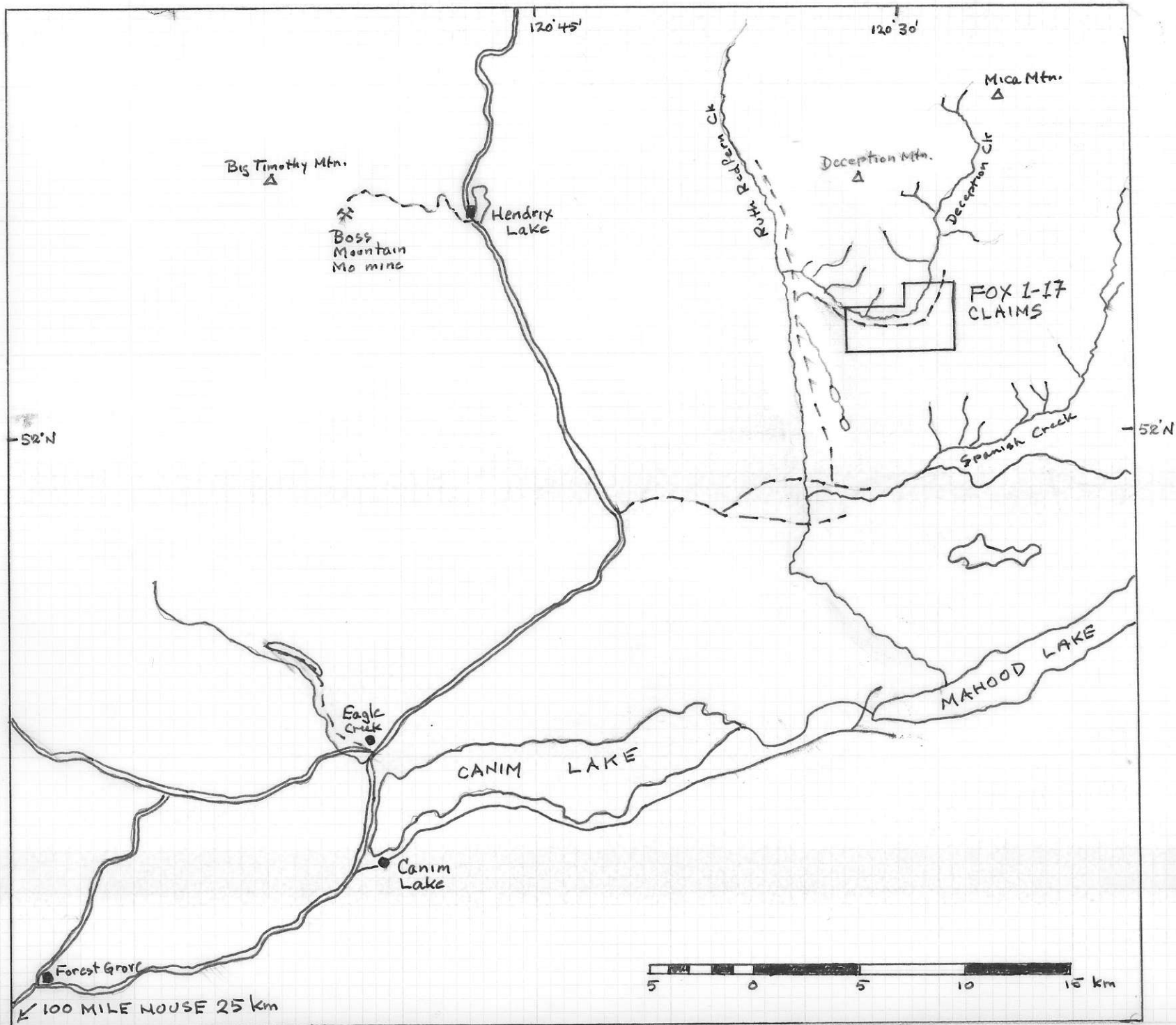


NOTE: Sample prefix is "FX00"

LODESTONE EXPLORATIONS CO. INC.
 FOX 1-6 MINERAL CLAIMS
 ROCK SAMPLE LOCATIONS; FIGURE 5
 Deception Creek Area, BC; NTS 93A/2E
 December, 2000; DW Ridley
 SCALE 1:10,000

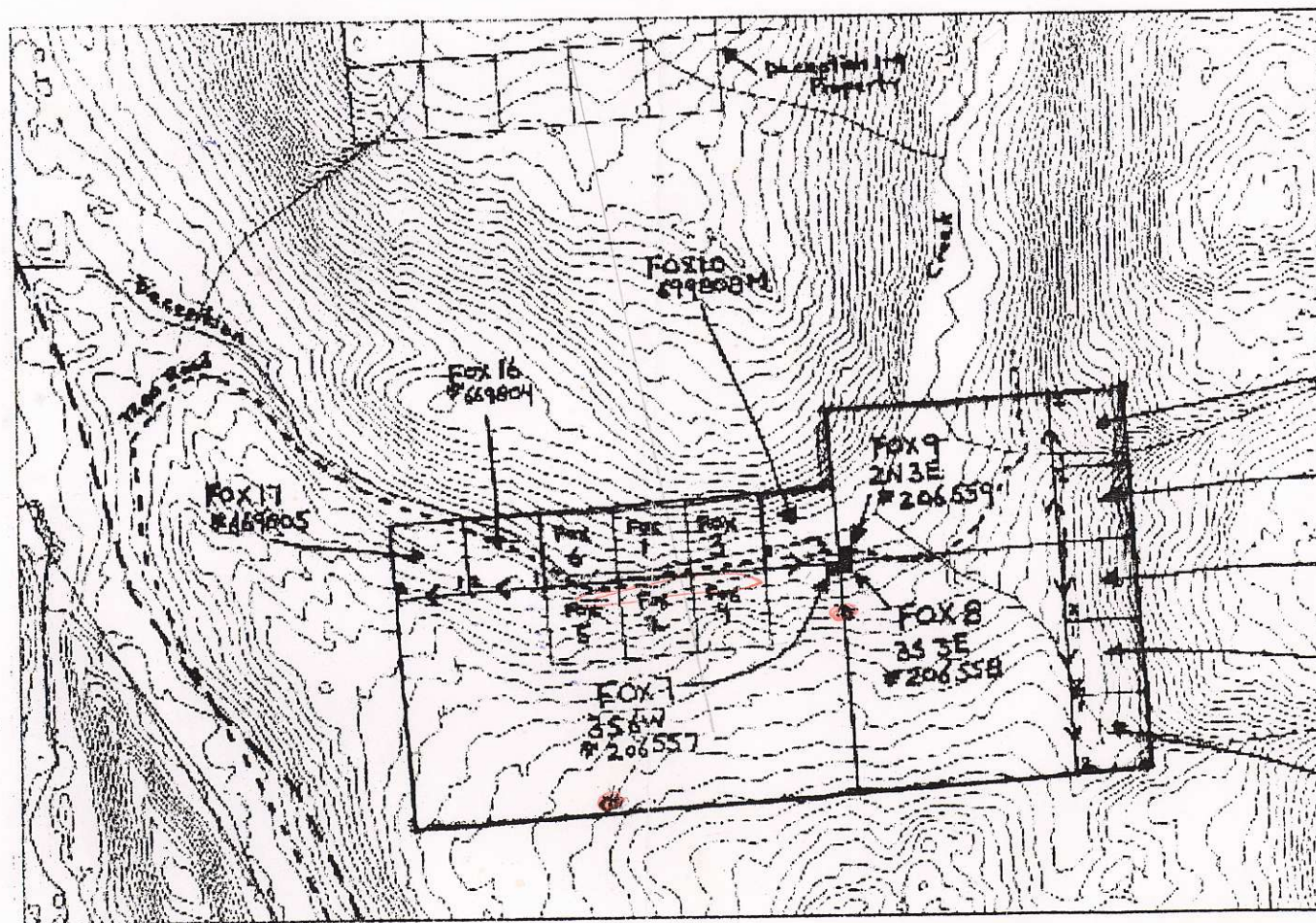
to accompany a technical report for BC Prospectors Assistance Program (Reference Number 2000-2001 P-65)

FIGURE 3 Geochemical grid and rock sample locations



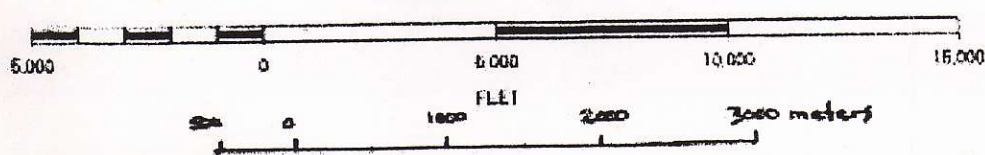
FOX PROPERTY; Deception Creek Area, BC

N.T.S. 93A/2E/1W Cariboo Mining Division



- FOX 11
#66989 M
- FOX 12
#669810 M
- FOX 13
#669811 M
- FOX 14
#669812 M
- FOX 15
#664068 M

SCALE 1 : 50,000



□ = new staking.
(July 18-23/01)

□ = existing claims

DWRidley Aug. 2/01



BCGS Geology



SCALE 1 : 62,500



N

