



SCALE: 1" = 100'

Adit reported to be 140' towards Alamo Lode.

Breccia Zone

Reference Line

Reference Line for Longitudinal Section

70°

80°

Vertical

ALAMO LODGE ?

10' Brecciated Porphyry with Calcite veinlets

steep

Additional Drift to intersect projection of lode.

(a) Vertical zone - 195'

(b) 80° dip to S.E. - 240'

(c) 70° dip to S.E. - 295'

PLAN

LONGITUDINAL SECTION

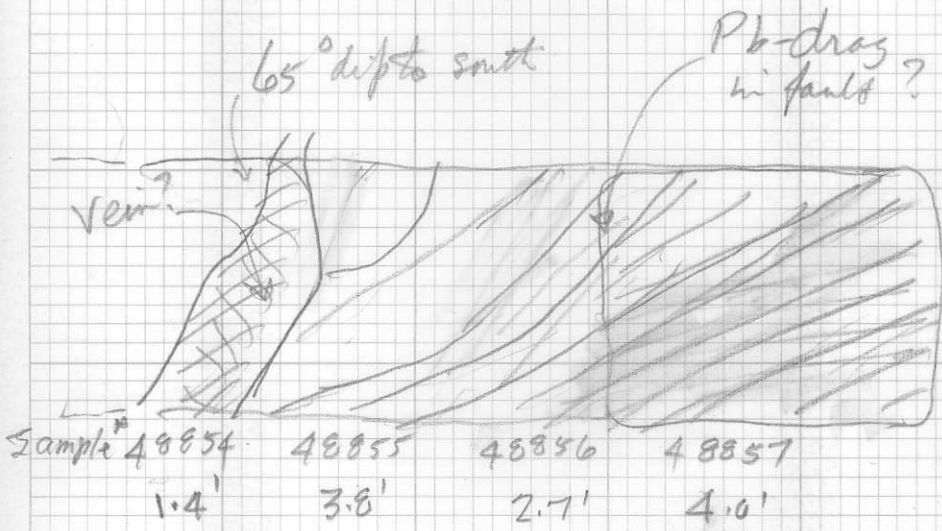
BACON & CROWHURST

EXPLORATORY DRIFT  
SILVER BELL CLAIM

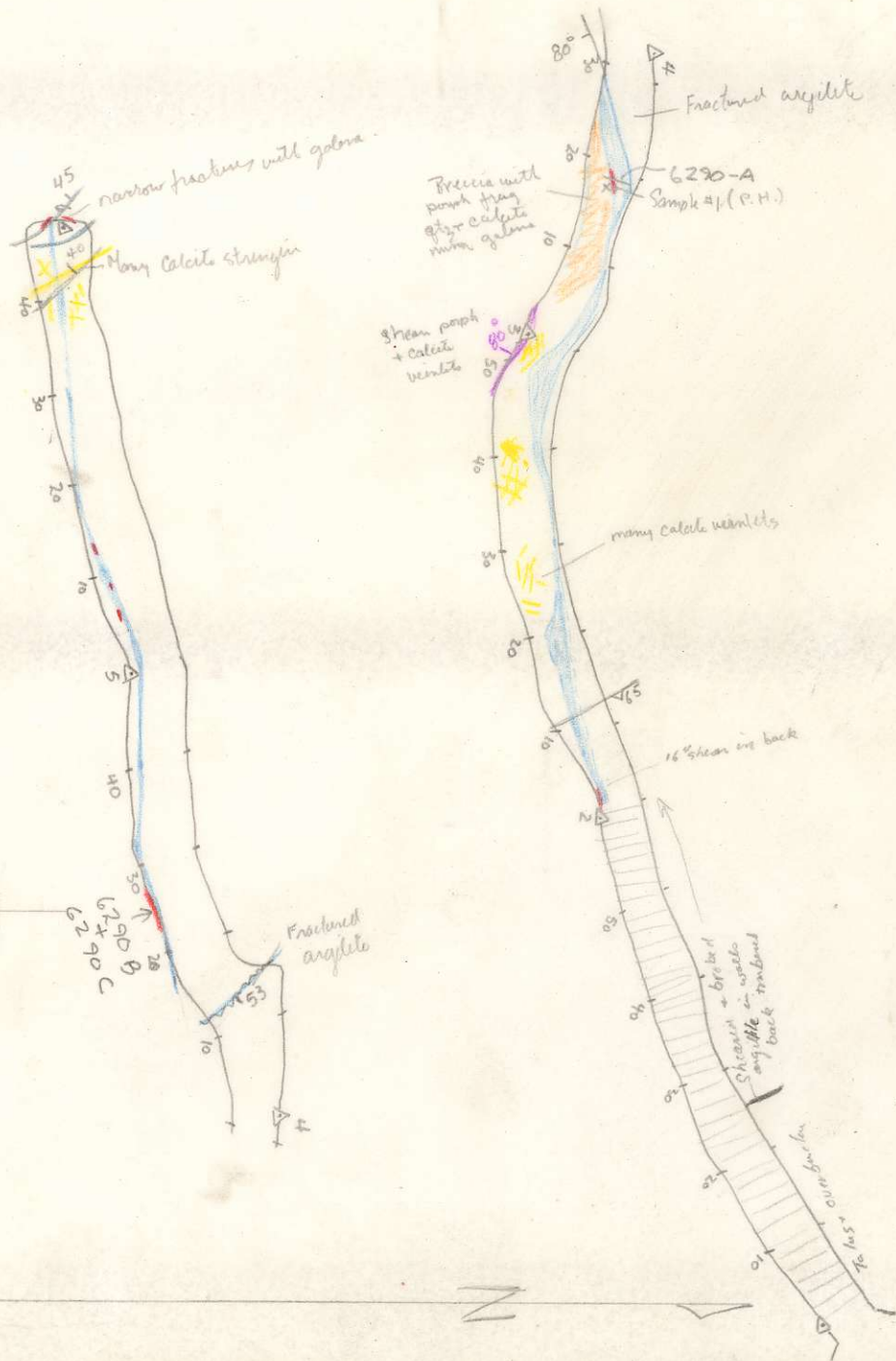
C. Campbell Sept 16, 1970

674452

Looking west along  
drift  
X-cut to Left



500'



6290 A- Back  
 1 1/4' .4 .2 1 Sample #1  
 1/4' → 1 W. Wingert

6290 B wall across 12" - 6' long stringer of sheared porph. at Δ4+25'

C " Selected highgrade.

6290 D 3' across face at end of 6290' Δ6

SILVER BELL - 6290 LEVEL

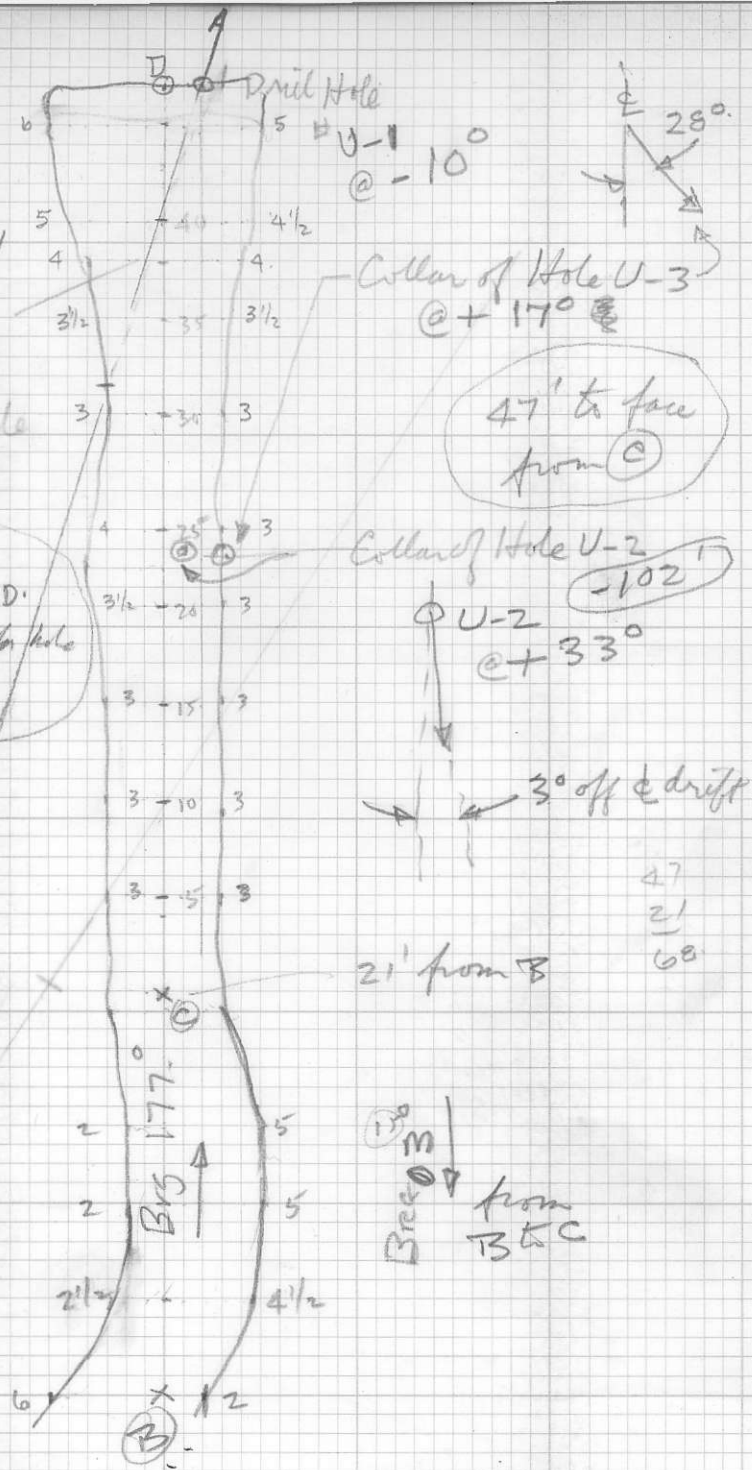
6290 B = 1/2  
 6290 C = 1/2

6290  
6157  
133

6290 Level.







Brs 08  
or 108°  
for hole

Drift 172-C-D  
+ 16° off for hole  
108°

47' to face  
from C

Collar of Hole U-2  
-102°  
U-2  
@ +33°

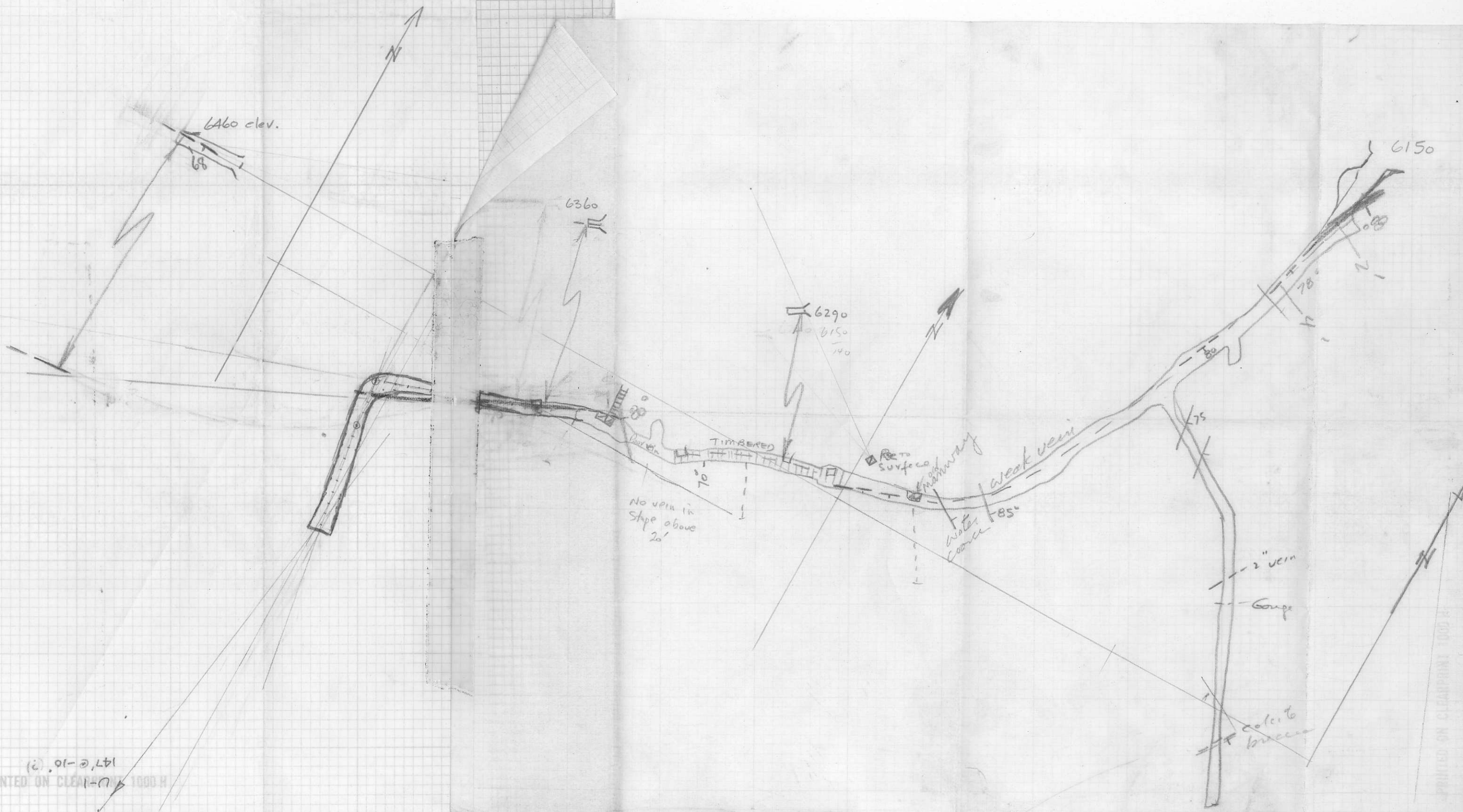
3° off & drift

47  
21  
68

21' from B

Brs 170°  
from  
B to C

B



6460 elev.

6360

6290  
6150  
140

6150

TIMBERED

weak vein

water course

mainway

to surface

No vein in slope above 20'

2" vein  
Gauge

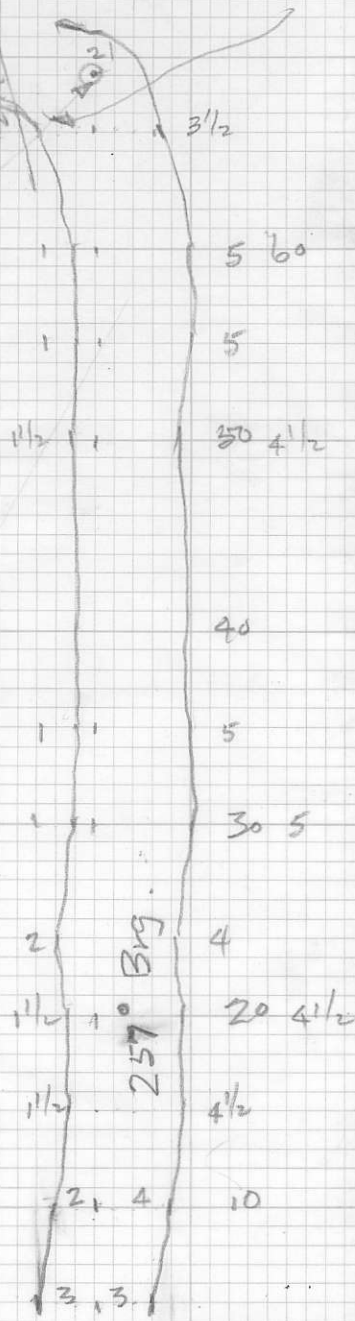
col. to  
bruce

147' @ -10° (?)

PRINTED ON CLEARPOINT 1000 H

PRINTED ON CLEARPOINT 1000 H

48351  
 52  
 453  
 taken on same

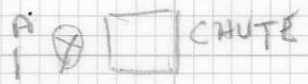


69  
 - 25  
 ---  
 44  
 21  
 47  
 ---  
 112

Reverse bars  
 07A

257° Big.

~~80~~  
~~74~~

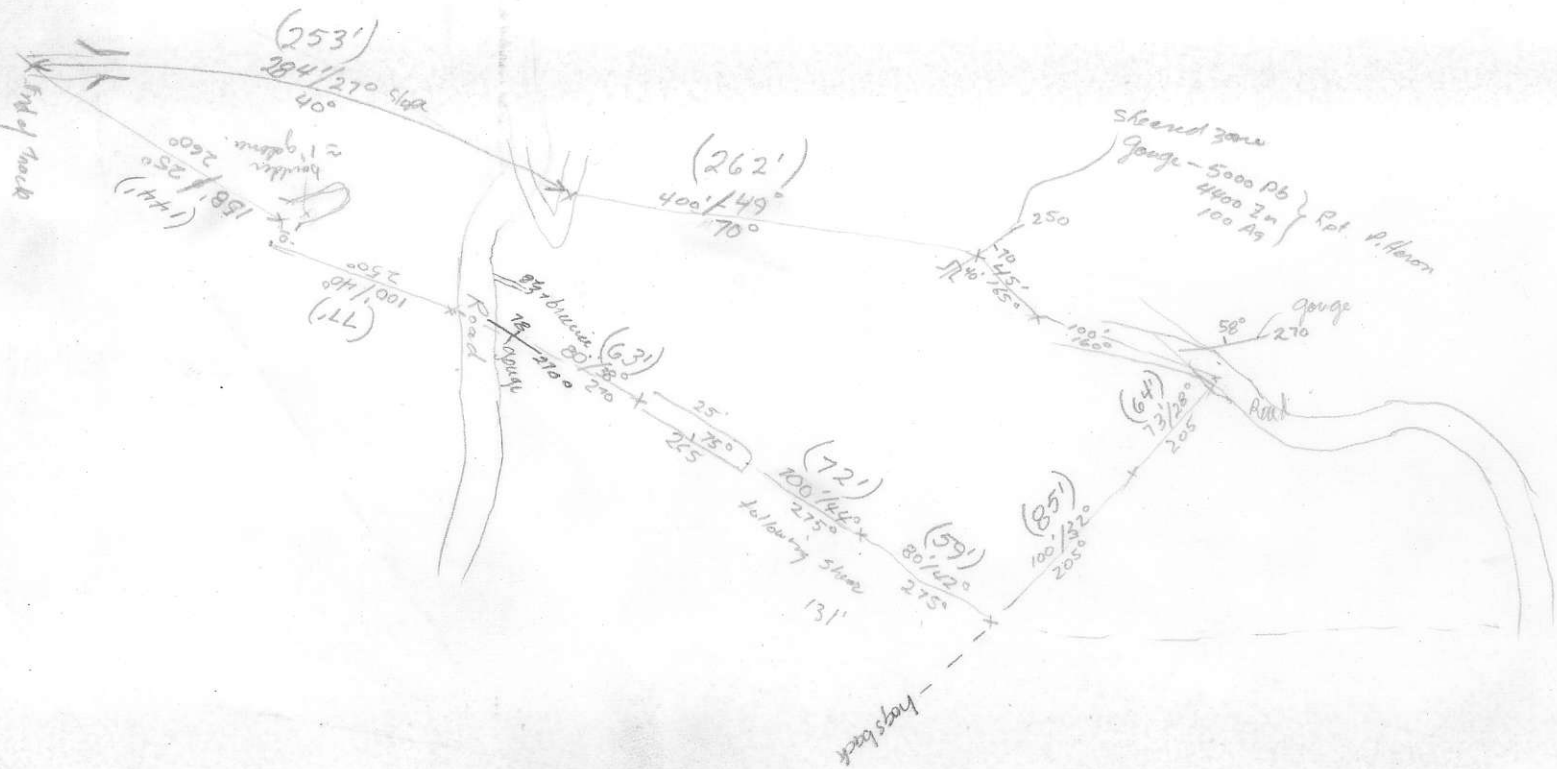


$$\frac{6470}{6290} = 1.028$$

$$\frac{180}{49} = 3.673$$

$$422(158') = 67$$

$$616(80) = 49$$





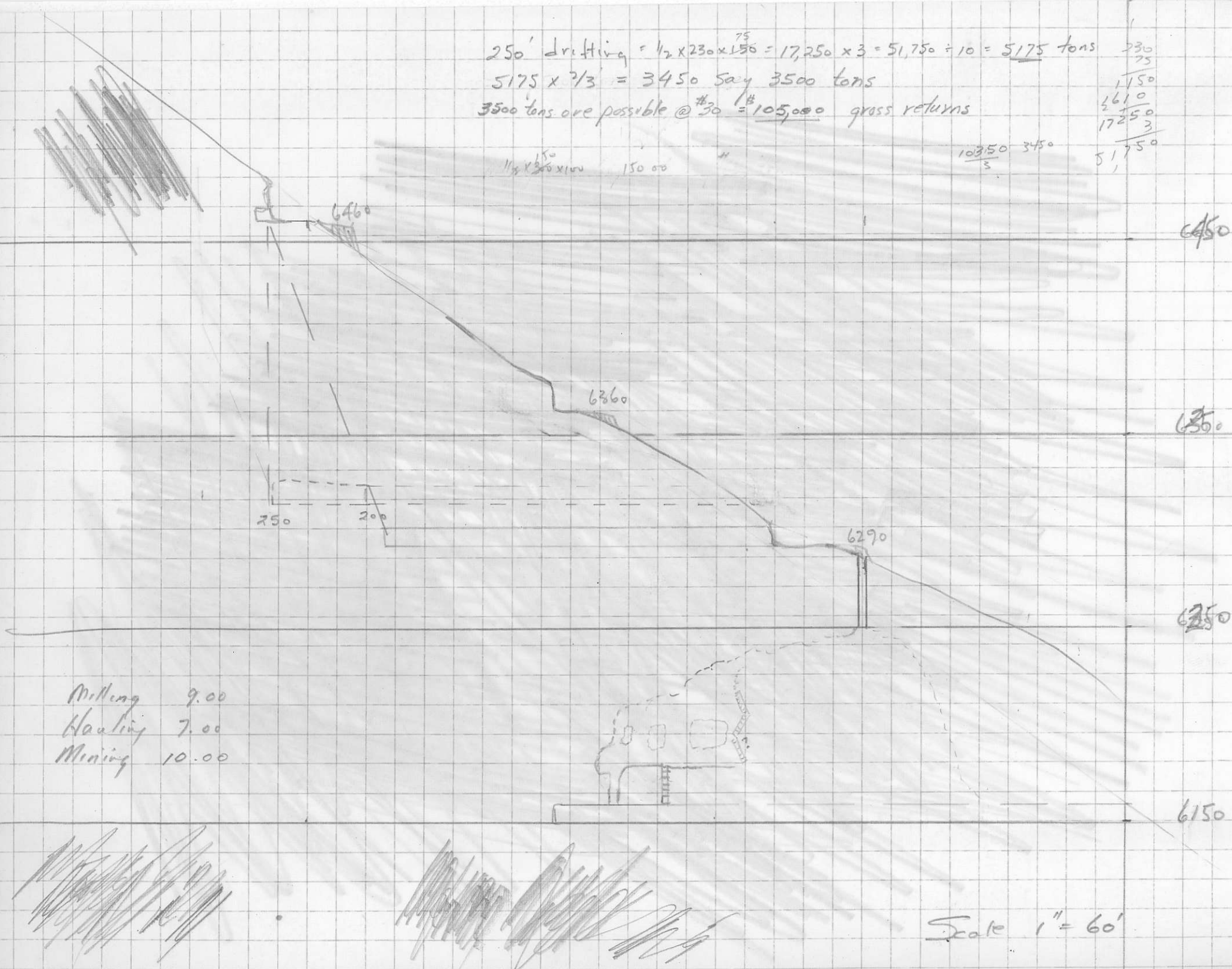


$250' \text{ drifting} = \frac{1}{2} \times 230 \times 150 = 17,250 \times 3 = 51,750 \div 10 = 5,175 \text{ tons}$   
 $5,175 \times \frac{2}{3} = 3,450 \text{ say } 3,500 \text{ tons}$   
 $3,500 \text{ tons are possible @ } \frac{1}{30} = 105,000 \text{ gross returns}$

$\frac{230}{75}$   
 $\frac{1750}{}$   
 $\frac{2610}{}$   
 $\frac{17250}{3}$   
 $\frac{51750}{}$

$\frac{1}{2} \times 230 \times 150 = 150,000$

$\frac{10350}{3} = 3450$



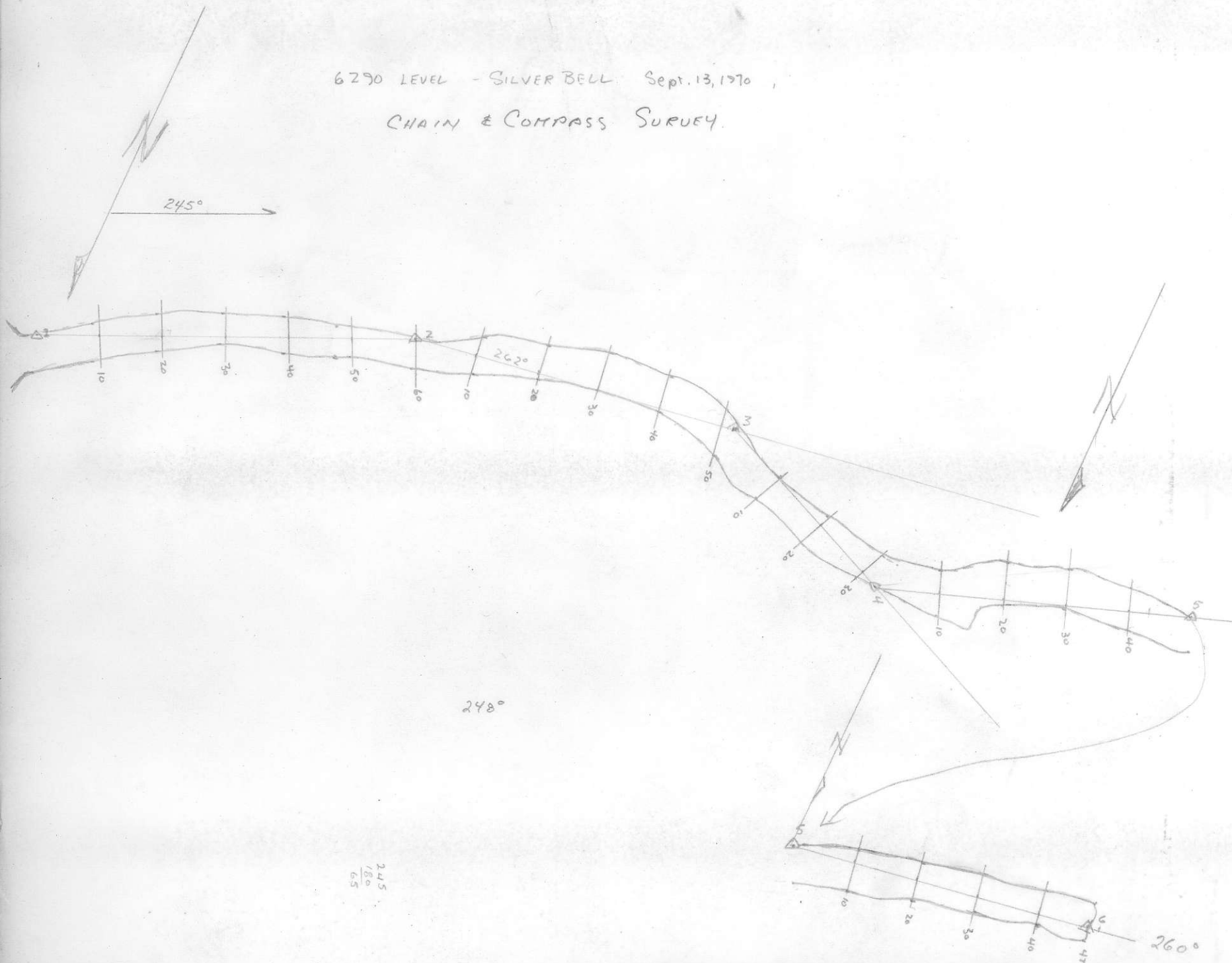
Milling 9.00  
 Hauling 7.00  
 Mining 10.00

Scale 1" = 60'

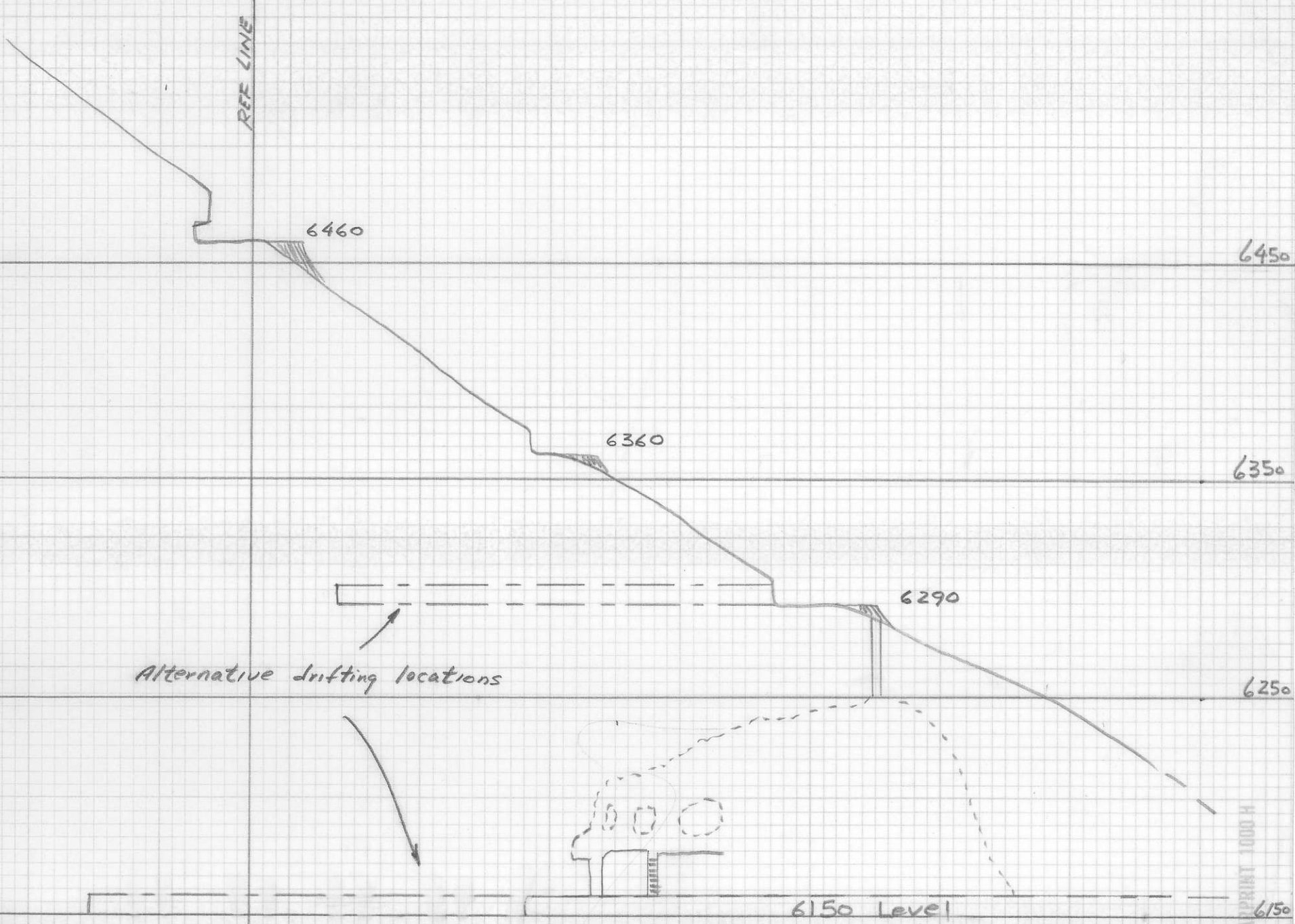


6290 LEVEL - SILVER BELL Sept. 13, 1970

CHAIN & COMPASS SURVEY







Silver Bell Tunnel

BACON & CROWHURST  
 LONGITUDINAL SECTION  
 SILVER BELL TUNNEL  
 & SURFACE CUTS  
 SCALE 1" = 60'

PRINTED CLEAR COPY PRINT 1000 H