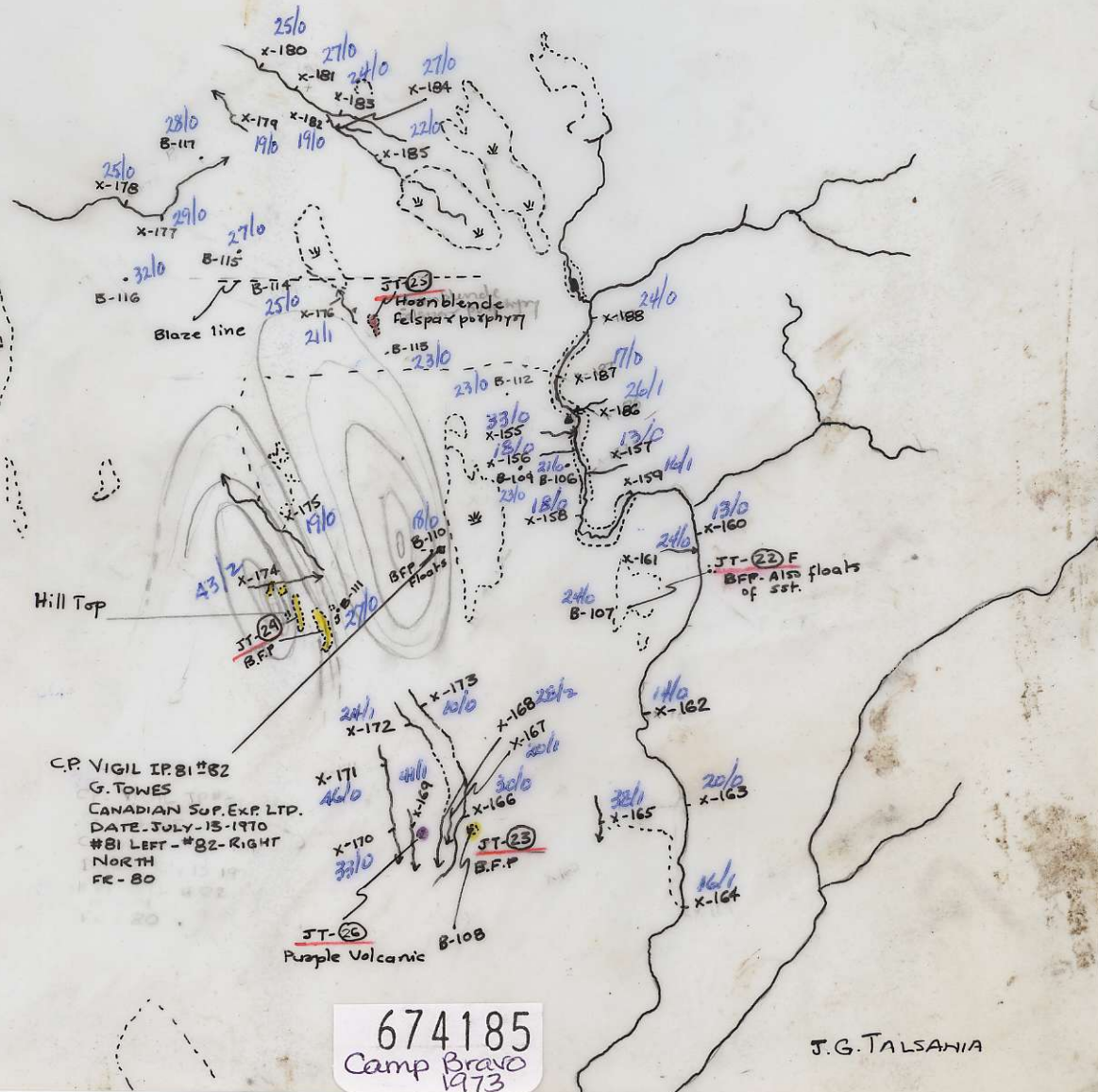


Plot silts  
93 m/sw

BRavo III



C.P. VIGIL IPB1#82  
G. TOWES  
CANADIAN SUP. EXP. LTD.  
DATE: JULY-13-1970  
#81 LEFT - #82-RIGHT  
NORTH  
FR-80

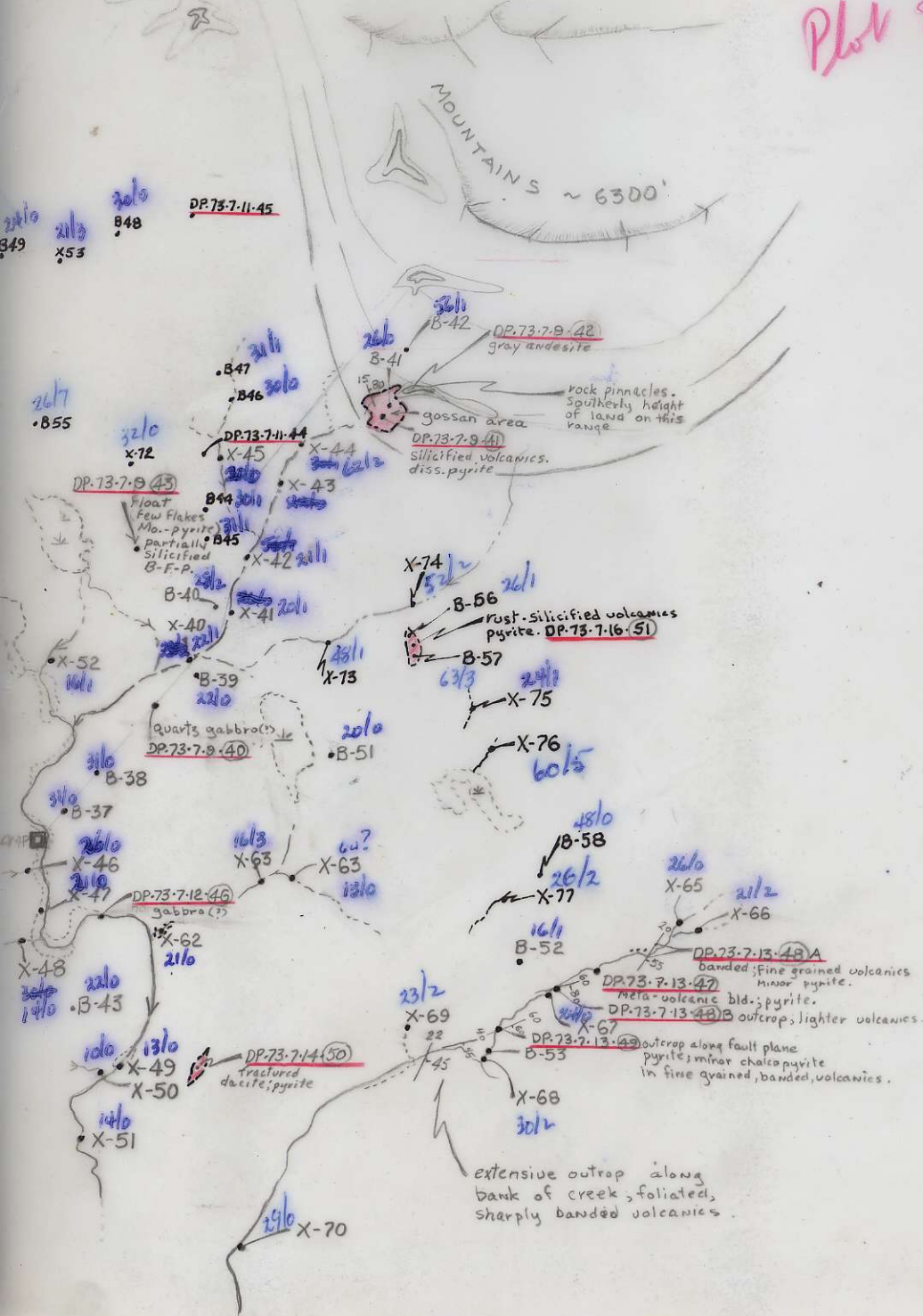
Soil B-106-117  
Silt X-155-188

BC-1596:29

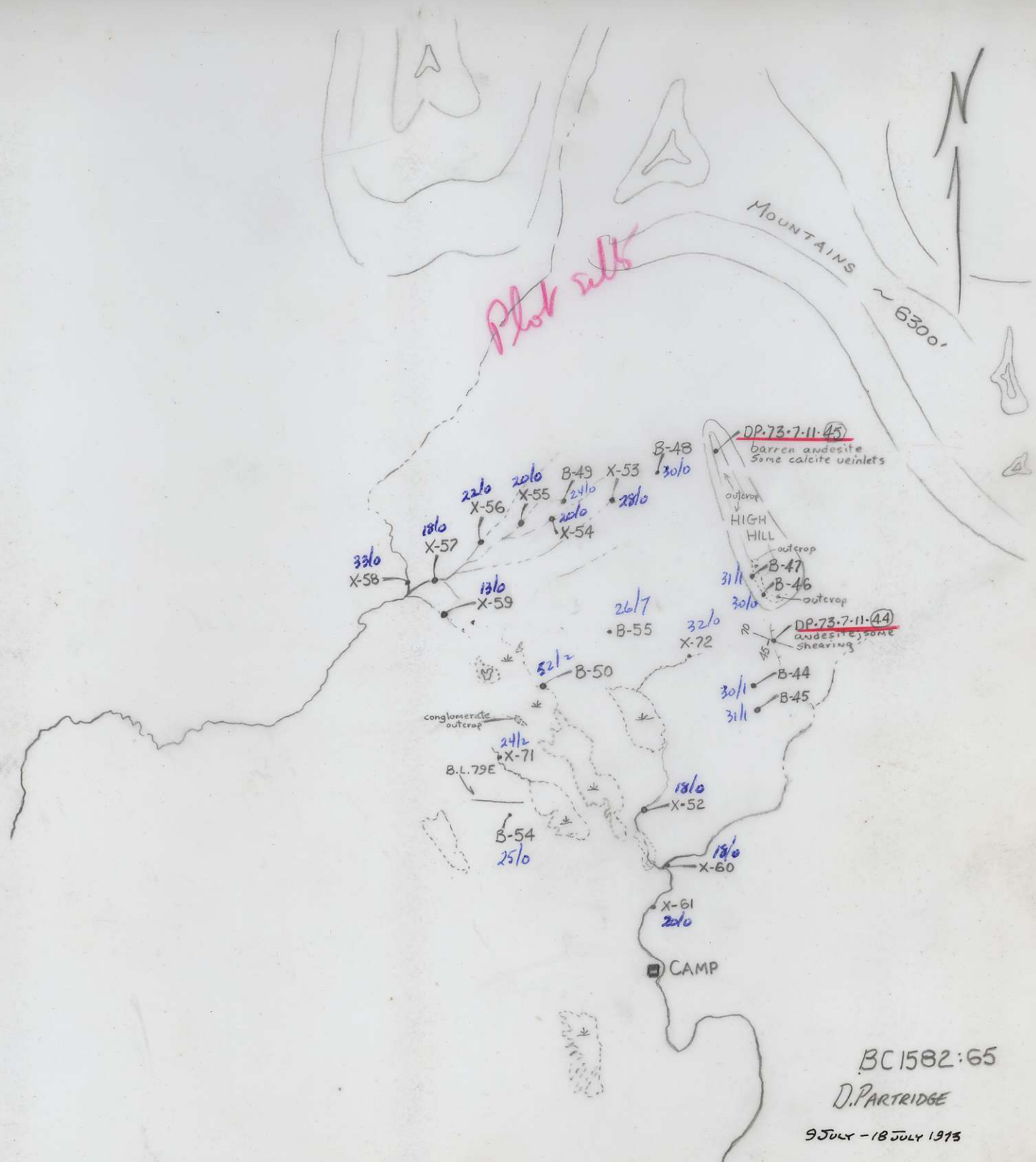
674185  
Camp Bravo  
1973

J.G. TALSANIA

Plot 515



AIR PHOTO BC1582:57  
D. PARTRIDGE  
BC 1582:58  
9 JULY - 18 JULY 1973



BC1582:65

D. PARTRIDGE

9 JULY - 18 JULY 1975

Camp Bravo

July 7/73

The photo 1582-58 with the overlay points out three possible camp locations.

There is a hornblende, biotite, feldspar porphyry to the west which has been previously staked. It is very similar to the porphyry now being drilled at Fenner Lake south west of Granite.

To the south of this intrusion is a circular structure as shown on the air photo 1596-29.

Approximately four miles to the south east of the suggested camp sites is the Trail Peak show under option to Hudson Bay Oil + Gas.

Three to four miles north east of the camp sites and over the height of land we have previously had some very low molybdenum values in silt sampling.

To the north is a barren feldspar porphyry which shows as a positive mag anomaly on the north edge of the mag map.

The geology of the area surrounding the suggested camp sites is not known to us but should be complicated + I hope interesting.

Best of luck.

Cam.

BRAVO II

July -18 1973

TALZANIA + PARTRIDGE

- DP-73-7-9-41 - Dark green black mg gabbro  
 9-42 - Green fg, andesite - small black beds? pheno  
 9-43 - Float. Dark frag BFP in lighter grey green BFP with  
 flow lenticulations. Both with fine py. (Brex)  
 -7-11-44 - Light grey green - (surface equiv BFP?) - fine grained  
 11-45 - Slightly purple grey - f.g. - flow? related to BFP?  
 -7-12-46 - Dark green black mg gabbro  
 -7-13-47 - Black sheared non magnetic - hornblende? schist.  
 -48A - Black argillite - rusty on fract. (white yellow brown)  
 -48B - Pale grey tuff - narrow black beds or streaks + specks.  
 -7-14-50 - Rusty fractured siliceified, bleached sediment? with  
 pyrite - black streaks with pyrite, py.  
 -7-13-49 - Black graphitic gouge? - calcite, pyrite - possible epq  
 -7-16-51 - Fractured silic? pyritized, rusty sediment? vol??  
 -7-8?-41 - Highly pyritized brex silic sed. vol??

- J.T. (22) - Dark matrix white pheno feld, biotite BFP mg.  
 (23) - Med grey BFP c.g. (Renactype)  
 (24) - As 23 with frag. f.g. alt BFP  
 (25) - As (23) - may be surface flow.  
 (26) - Amygdal vol.



CHEMEX LABS LTD.  
SOIL SAMPLES

COLLECTOR: PARTRIDGE  
 AREA: F. BARINE LAKE  
 FIELD MAP: BC 1582:57  
 DATE: 9 July -

RESULTS PLOTTED BY: \_\_\_\_\_  
 MAP: \_\_\_\_\_  
 DATE: \_\_\_\_\_

ANALYST: \_\_\_\_\_  
 METHOD: H.M.: \_\_\_\_\_  
 CU: \_\_\_\_\_  
 DATE: \_\_\_\_\_

SAMPLE NUMBER	SAMPLE LOCATION	NOTES	TOPOGRAPHY					VEGETATION					SOIL DATA				FIELD SCREENED	VALUES				
			VALLEY BOTTOM	SLOPE UP	SLOPE DOWN	HILL TOP	LEVEL GROUND	HEAVILY WOODED	SPARSELY WOODED	BURNT	LOGGED	GRASSLAND	HORIZON SAMPLED	THICKNESS OF HORIZON	GOOD HORIZON DEVELOPMENT	POOR HORIZON DEVELOPMENT		DRIFT	BEDROCK	Mo	Cu	Pb
9 July 78 B-37	500' NE camp	AIR PHOTO BC 1582:57					✓	✓				C		✓		✓						
B-38	1500' "	wet ground-drift					✓					B 4"		✓		✓						
B-39	1/4 M. NE camp	prob. drift derived										B		✓		✓						
B-40	1 1/2 M. "	" " "						✓				B				✓						
B-41	2 M. NE camp	derived from DP-44 2% pyrite					✓			✓		P <sub>2</sub>	✓									
B-42	"	steep slope NE of B41			✓					✓		B		✓								
10 July B-43	1/2 M. S camp	glacial material (?)					✓			✓		C		✓		✓						
11 July B-44	1 M NNE camp	FE few 100' from DP-43					✓					C		✓		✓						
B-45	"	" " " "					✓					B <sub>2</sub>		✓		✓						
B-46	1 1/2 M. NE camp	~ 1000' N, D-47 2%			✓			✓		✓		C		✓		✓						
B-47	1 3/4 " "	derived from barren (?) vol.						✓				B		✓								
B-48	"	due west ~ 900' DP-45			✓			✓				C		✓								
B-49	"	" 250' "			✓			✓				C		✓								
B-50	"	clay					✓			✓		C		✓		✓						
12 July B-51	~ 3/4 M. E camp				✓			✓				B		✓		✓						
13 July B-52	~ 1 M E. camp	~ 1500' W X-65 creek								✓		C		✓		✓						
B-53	1 1/2 M. E.S.E. camp	decomposed BEDROCK	bank of creek									B				✓						
B-54	1/2 M. NW camp				✓			✓				B				✓						
B-55	1/4 M. N. camp	prob. overlies barren vol.					✓	✓		✓		B		✓		✓						
B-56	1 M NE "	overlies DP-51 2% pyrite					✓			✓		B <sub>2</sub> 6"	✓									
B-57	"	" " " " "					✓			✓		P <sub>2</sub>	✓									
B-58	"	clay - prob. heavy D.B.			✓			✓				C		✓		✓						









**CHEMEX LABS LTD.**  
**SOIL SAMPLES**

COLLECTOR: J.G. TALSANIA  
 AREA: Babin  
 FIELD MAP: BC. 1596:29  
 DATE: July 13<sup>th</sup> - 17<sup>th</sup> 75

RESULTS PLOTTED BY: \_\_\_\_\_  
 MAP: \_\_\_\_\_  
 DATE: \_\_\_\_\_

ANALYST: \_\_\_\_\_  
 METHOD: H.M.: \_\_\_\_\_  
 Cu.: \_\_\_\_\_  
 DATE: \_\_\_\_\_

SAMPLE NUMBER	SAMPLE LOCATION	NOTES	TOPOGRAPHY					VEGETATION					SOIL DATA					FIELD SCREENED	VALUES				
			VALLEY BOTTOM	SLOPE UP	SLOPE DOWN	HILL TOP	LEVEL GROUND	HEAVILY WOODED	SPARSELY WOODED	BURNT	LOGGED	GRASSLAND	HORIZON SAMPLED	THICKNESS OF HORIZON	HORIZON DEVELOPMENT	PARENT MATERIAL	Mo		Cu	Pb	Zn		
B-106	500' SW of Camp	light brown, sl wet			✓			✓				B'	8"	✓									
B-107	3000' SE of Camp	light brown		✓								B'	9"	✓									
B-108	1 mile W of NW of Camp	Sample by RFP outcrop - light brown			✓							B'	10"	✓									
B-109		light brown - dry			✓							B'	6"	✓									
B-110	50' W of Vigil Camp	Tree out sample along with RFP float		✓								B'	1'	✓									
B-111	4900' SW of Camp	Brown RFP outcrop - light brown		✓								B'	10"	✓									
B-112	1000' W of NW of Camp	light br. face outc.		✓								B'	12"	✓									
B-113	230' NW of Camp	light brown		✓								B'	8"	✓									
B-114	1/2 mi from Camp	Dark brown wet		✓								B'	8"	✓									
B-115	1000' from B-114	Light brown dry bank slip Rocky		✓								B'	16"	✓									
B-116	1000' S of B-115	light grey wet		✓								B'	18"	✓									
B-117	6500' NW of Camp	Light br. Tree out sample										B'	12"	✓									