

Cam

Thanks for use of your camera. Any week you're not using it would appreciate you sending it over, with 1 color charge to Jyoti and 1 B+W to myself. There are a few specks of Mo. in DP-43 float. Covered the area in detail and could find no source or similar float. DP-51 o.c. pyrite appears to be similar rock type, but this would presume a S. to N.E glacial movement. Soil-silt may pick it up, hopefully.

674183

Camp Bravo

3 JULY 73

cont.

S

Silt sample X-31

upstream (N.) from X-30

Silt sample X-32

stream flows WNW near source.

Silt sample X-33

creek draining from east
upstream 500' from X-26

Silt sample X-34

upstream X-33

Silt sample X-35

upstream, near level ground.

Silt sample X-36

~ 700' N. of camp.

4 JULY 73

Silt sample X-37

1 1/4 MILE S. of camp; silt;
1' x 3"; Moderate velocity.

Silt sample X-38

upstream from X-37

Silt sample X-39

~ 800' upstream from X-38

9 JULY 73

Soil sample B-37

~ 500' N 30° E CAMP

Soil sample B-38

~ 1500' NE CAMP; near 50' sq. open
swamp.

AIR PHOTO

1582:57

DP-13-7-9-40

quartz gabbro(?) somewhat porphyritic to SW.
outcrop 1/2 M. N 30° E of camp.

Soil sample B-39

~ 1000' NE up slope from DP40

Start at
Soil B37

"braided"
streams
draining
SW
from
mountains
NE
of camp

Silt sample X-40

Main flow creek from mts. to NE
of camp.

Silt sample X-41

Subsidiary flow stream NE of X-40

Soil sample B-40

N 100' W. of small stream

Silt sample X-42

Upstream X-40

Silt sample X-43

Upstream X-42

Silt sample X-44

Upstream X-43

DP. 73.7.9. (41)

outcrop, silicified volcanics, fine diss. pyrite
and along fracture planes, this outcrop approx.
800' from summit (extensive gossan area)

Soil sample B-41

this taken from B horizon
adjacent to DP-41 outcrops.

DP. 73.7.9. (42)

E. mt. Summit. finegrained gray andesite vol.

Soil sample B-42

steep slope

Strike at 200' SW of B-42 is ~ N15W
dip 80°E

Silt sample X45

S. flow stream.

DP. 73.7.9. (43)

about 2500' SW of X45, 1' x 6" x 4" float
blk. a few grains of Mo. &
chalcopyrite; pyrite. 3 pieces in
sample. larger piece appears more
porphyritic than others, due to
partial silicification(?), + biotite &
feldspar alteration. Some yellow
Mo. oxidation stains.

170 July 73

Silt sample - X-46

~500' S. CAMP. from spring flow into
"camp" CREEK.

Silt sample X-47

downstream camp creek ~ 800'

Silt sample - X-48

flows into X-47 creek from W.

Silt sample X-49

30' S. of beaver den 1/2 M. S. CAMP

Silt sample X-50

flows into X-47 creek from W.

Silt sample X-51

from bank of X-47 creek. part
Soil (clay) - part silt, fast flow.

Soil sample B-43

prob. glacial; perhaps remnant
of cut-off meander X-47 creek.

11 July 73

Silt sample X-52

1/2 M. N. CAMP. drains W.

Soil sample B-44

in immediate area of DP-43 float
(Mo. - pyrite)

Soil sample B-45

as above. ~ 800' SE of B-44

DP-73-7.11(44)

gray-green volcanics. strike N60W
dip SE 45°. some scattered pyrite.

Soil sample B-46

hill, slope 30° to west, about 1000'
N. of DP-44

Soil sample B-47

slope 60° W. outcrop area.
Soil horizon derived from
rock type (as DP-44) barren?
vol.

~1000' N. of B.47 O.C. strike N10W
dip: SE-40° barren green andesite (?)
with calcite veinlets.

DP-73-7-11.45

outcrop on west slope; and top of high
hill ~ 2 MILES NNE of CAMP, barren gray-
green andesites much the same as on
strike to south, and sampled at DP-44

Soil sample B-48

due west of DP-45 ~1000' and prob.
derived from similar O.C.

Silt sample X-53

small stream ~1500' W. of DP-45

Soil sample B-49

about 1/2 mile W. of DP-45. heavy
overburden.

Silt sample X-54

~700' W. of B-49 small stream. W. flow.

Silt sample X-55

west of X-54 ~ 500'

Silt sample X-56

west of X-55 ~ 500'

Silt sample X-57

~800' W. of X-56

Silt sample X-58

almost dry gully merges with
X-53 to X-57 creeks

Silt sample X-59

flow to NW into X57, X58 creek
drains swamp.

Soil sample B-50

* clay.

Silt sample X-60

downstream 1500' from X-40
at junction into "camp" creek.

Silt sample X-61

"camp" creek ~1000' N.

mostly
"braided"
streams
eventually
merging
into
X-57 creek.

112 JULY 73

DP. 73.7.12. (46)

outcrop ~ 1500' SE camp, along "CAMP" creek. med. grained, dark, gabbro (?)

Silt sample X-62

SW flow - joins "CAMP" creek.

Silt sample X-63

May be influenced by soil-clay from bank

Silt sample X-64

flows into X-63 creek

113. JULY 73

Soil sample B-52

prob. heavy overburden area.

DP. 73.7.13. (47)

bl. in creek. MAY or may not be local in origin (somewhat rounded but oblong in shape) meta-volcanic. finely diss. pyrite, and oriented along shear planes, black resistant crystals of glass like mineral.

DP. 73.7.13. (48) A

outcrop. west bank of X-65 creek ~ 2 miles due east camp. Strike N20E dip SE ~ 55° black. v. fine grained volcanics.

~ 150' upstream

Strike N40E dip ENE

- some 4" bands of > 1% pyrite, + multiple fractures = gossan.

Silt sample X-65

major flow creek SW. upstream ~ 500' from DP. 48

Silt sample X-66

subsidiary creek flowing into

X-65.

DP. 73.7.13. DP. (48) B.

- about 1000' S downstream DP. (48) on east bank outcrop. black volcanics with alternating bands of lighter material highly fractured; + in bed of creek.

Strike about N60E; dip S80°

- calcite veinlets

- small tapered lenses of pyrite (2" x 1/2") in partially decomposed bedrock.

Silt sample X-67

about 75' downstream from
DP-48 B (minor pyrite in 48 B o.c.)

Soil sample B-53

about 200' downstream X-65, X-67
creek from DP 47 - DP-49.

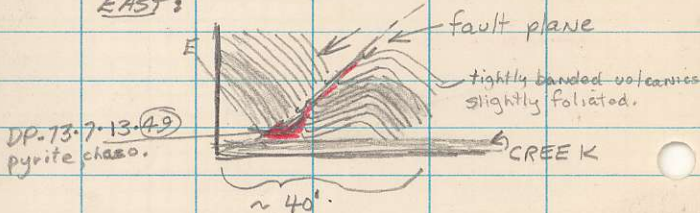
this sample decomposed bedrock
on west bank, and derived from
fracture plane similar to DP-49
quite likely has >1% pyrite +
accessory Cu pyrite.

DP.73-7.13.(49)

outcrop on east bank X-65, X-67 creek.
Strike about N60E, dip S45-60°. Same
fine grained dark volcanics as
sampled upstream at DP-48 A, DP-48 B.
This sample minor fault material with
pyrite and occasional chalcocopyrite. Numerous
calcite & quartz veinlets.

SECTION SKETCH LOOKING

EAST:



DP.73-7.14.(50)

14 JULY 73

outcrop. $\frac{3}{4}$ MILE SE CAMP. NEAR HILL
TOP, FRACTURED DACITE. DISS. PYRITE.

Silt sample X-68

100' downstream from B-53 and
derived from banded vol. with
periodic lenses & diss. pyrite. (as
in DP-49).

14 July (cont.)

Silt sample X-69
flow SE into X-65, X-68 creek.

Silt sample X-70
downstream X-65 to X-69.

15 July

Soil sample B-54

1/2 m. NNW CAMP.

Silt sample X-71

drains \swarrow 1/2 m NNW CAMP

Soil sample B-55

1/2 mile N. of CAMP.

Silt sample X-72

SMALL WEST downhill flow stream.

16 July

Silt sample X-73

SW flow; main creek

Silt sample X-74

upstream X-73

DP-73. 7-16. (51)

3 pieces; outcrop - rusty surface.
siltified volcanic dacite, highly
fractured & some shearing. pyrite.
Soils B-56 & B-57 cover this.

Soil sample B-56

area of DP-51

Soil sample B-57

area of DP-51

Silt sample X-75

small stream ~ 1000' E of DP-51

Silt sample X-76

small SW drain stream.

Soil sample B-58

clay; prob. heavy O.B.

Silt sample X-77

SW drainage, prob. into X-65-X69
creek.