



674180

Camp Alpha
1973





metamorphosed
gneiss
(JF 5)

1 mi.

EZ-558
105/0

W-1
10/0

W-3
12/0

W-2
16/0

18/0
18/0
18/0
18/0
18/0

28
EZ-483

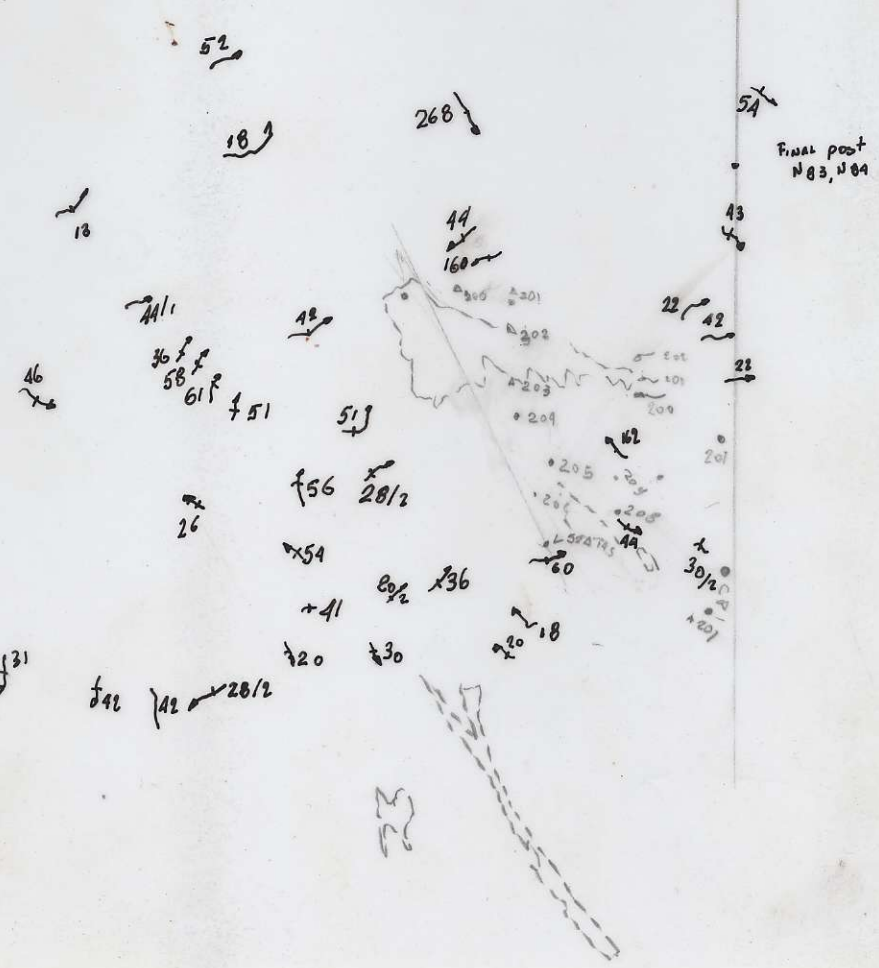
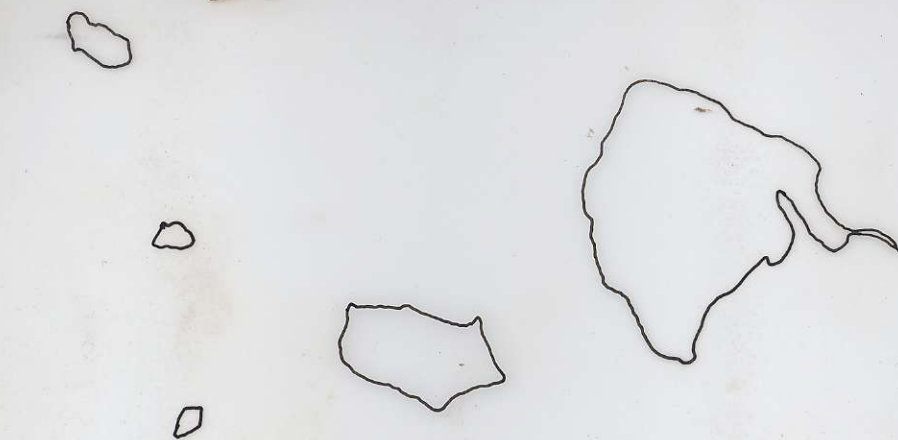
160
EZ-481

162
EZ-480

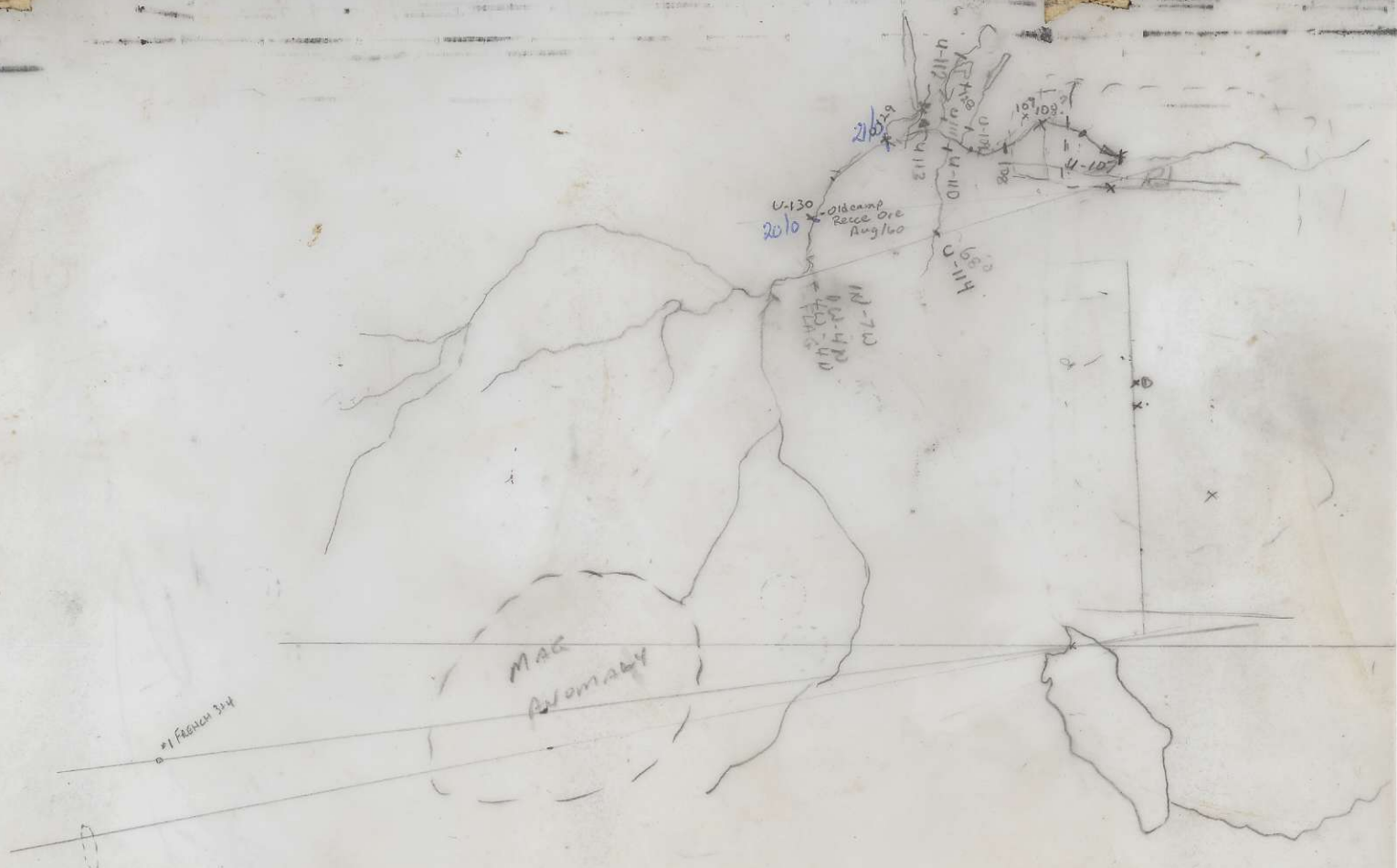
final post.
N83, N84



BC 1596:13



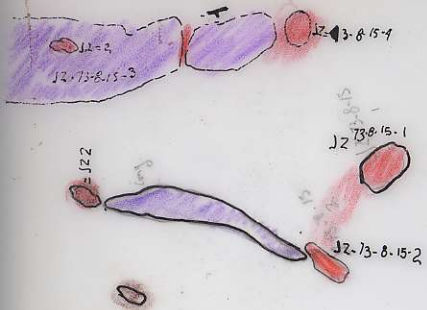
BC 1596:14



1/ French 3-4



RC-1651-86

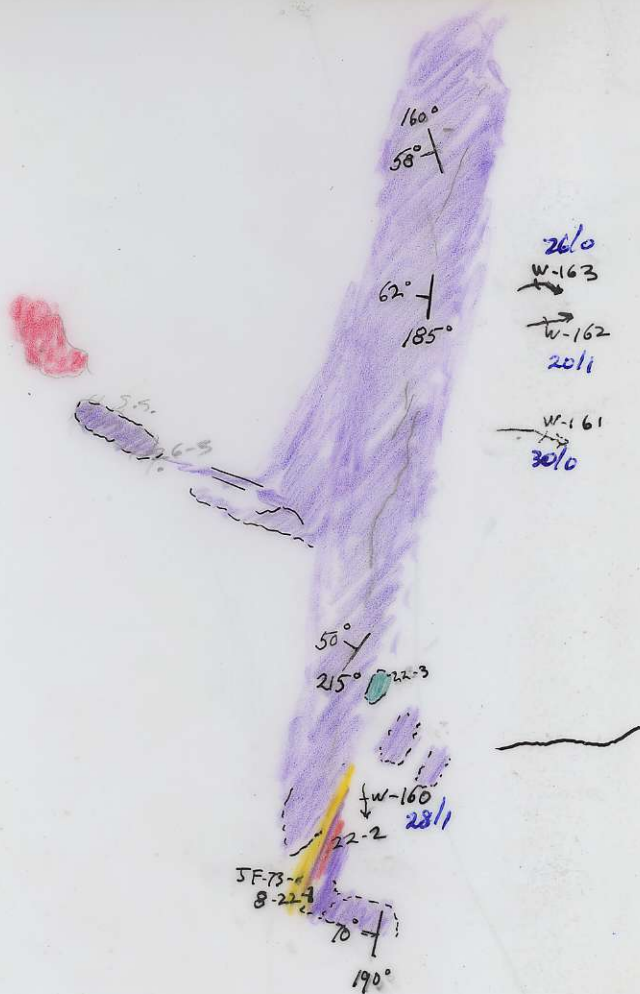
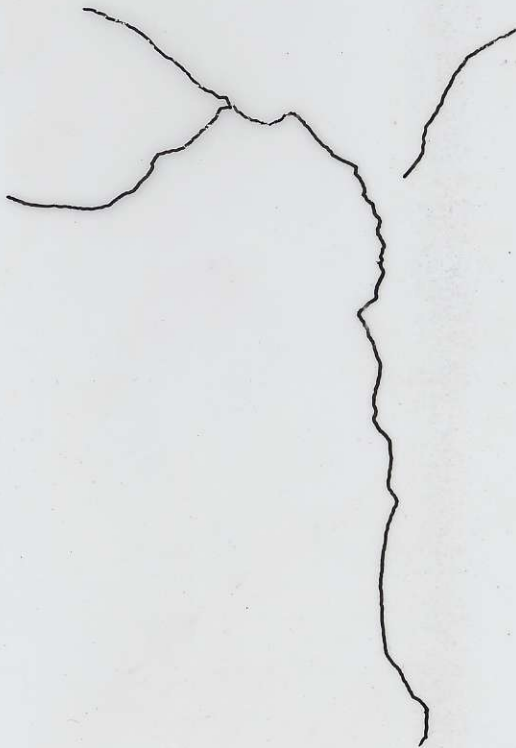


Plotted

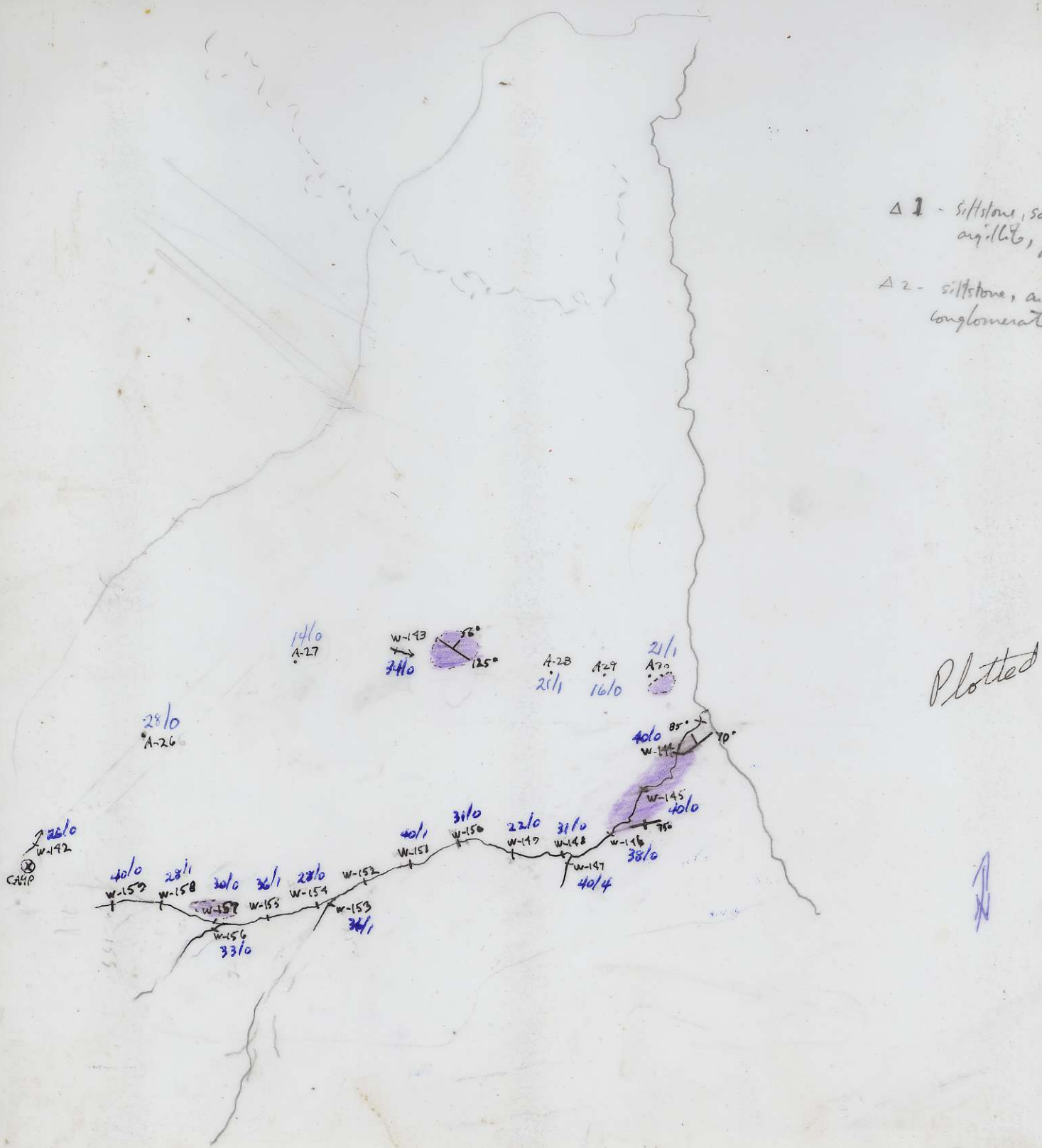
RR

1651:83

BC5308-122



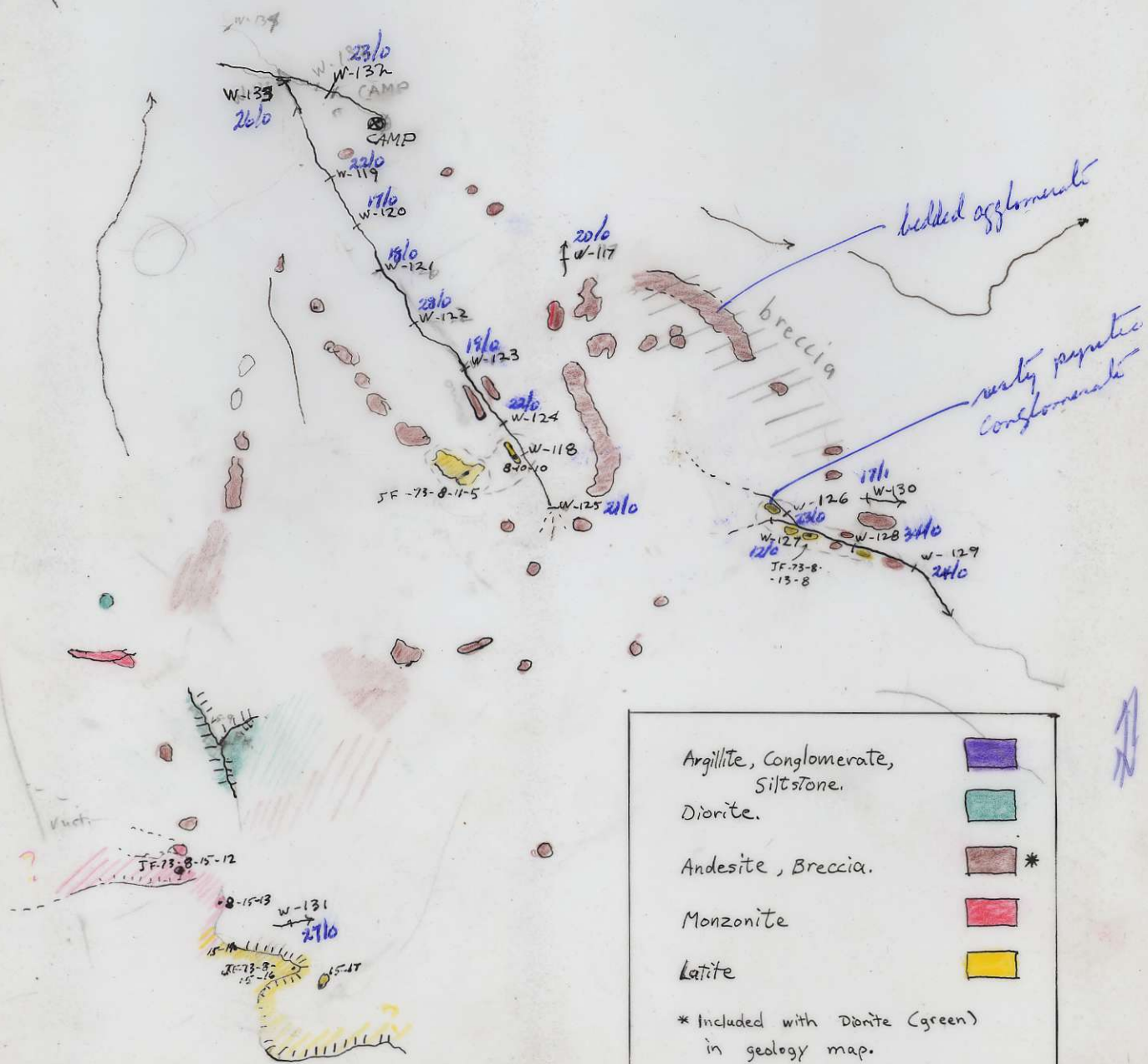
BC 1588:29



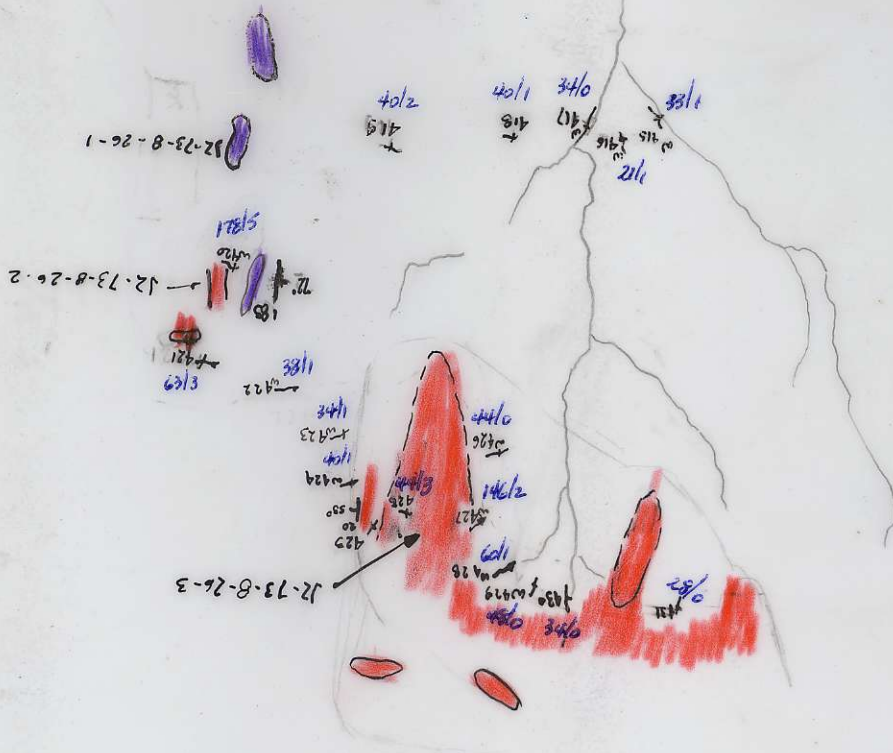
$\Delta 1$ - siltstone, sandstone,
argillite, quartzite
 $\Delta 2$ - siltstone, argillite,
conglomerate.

Plotted





1651:84

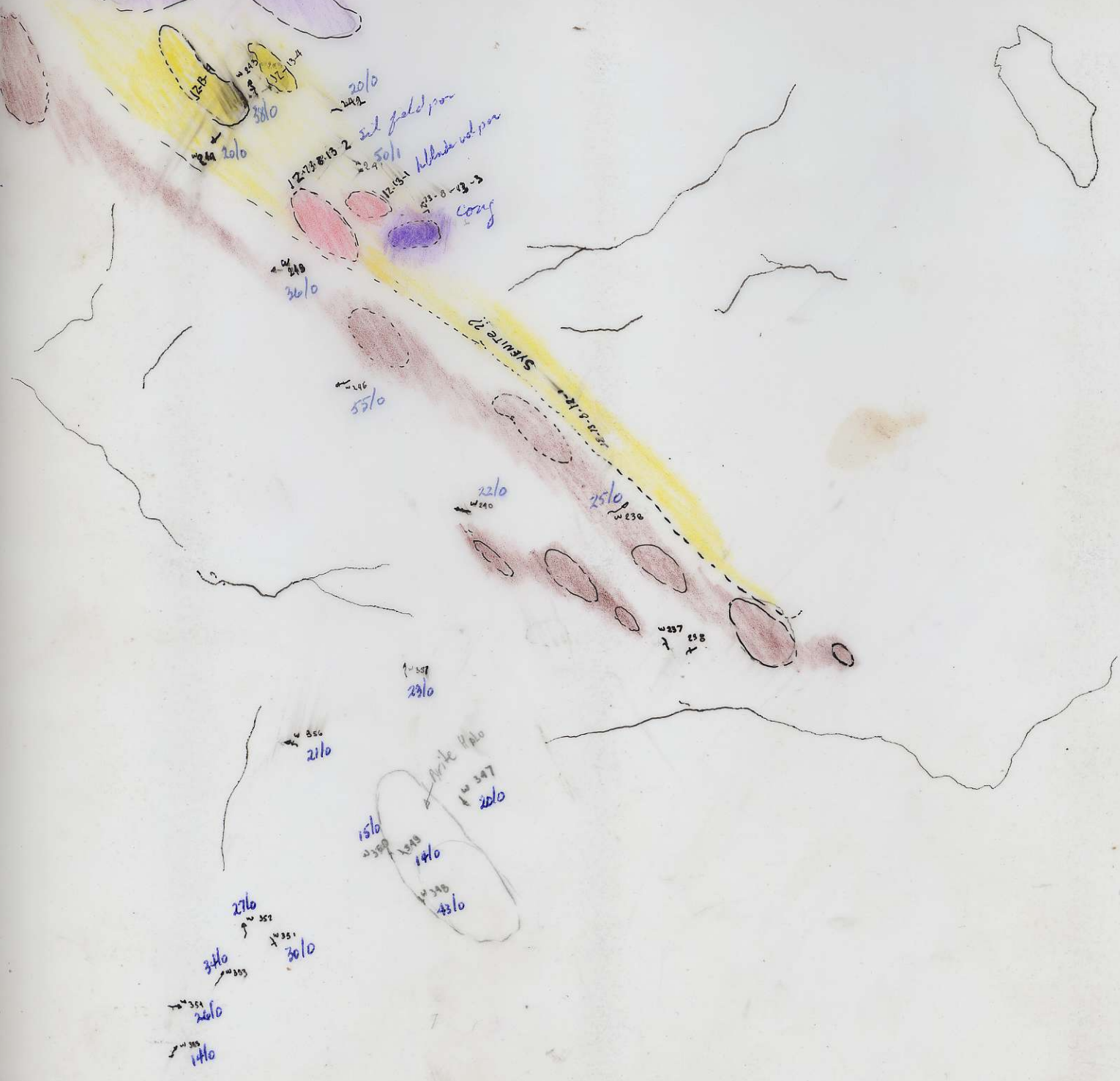


3610
3010
2210
3810
2610
4010
3110
3310
3010
4410
3810





Surface
interbedded
with
Syenite.



1651:85

X

FRENCH
PEAK

porph
andes.

9-①

7-②

7-③

py

TN 72-9-7 ① py

TN 7-② py

11-①

Rock SAMPLE
LOCATIONS.



FRENCH PEAK

SEPT 7-11

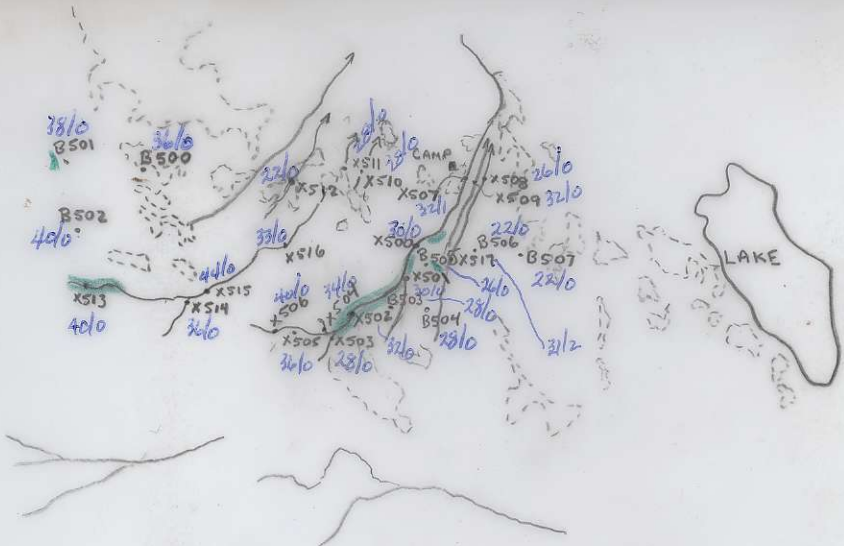
T.W. NEUFELDT

X

BC 1651:85

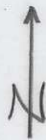
X

FRENCH
PEAK



Sample s. ta
Silt X 500
Soils B 500

Outcrop.
andesite
porph andesite
tuff
volc flow



FRENCH PEAK AREA
(EAST SLOPE)

SEPTEMBER 7-11

T.W. NEUFELDT.

X

BC1651:85



NICHYESKWA
CREEK

~ timber
cleared
area

2210
B658

3210
B659

X656

B658

X664

2610

B669

2410

B652

B653

1610

B657

1610

B660

DP.73-B.10(102)
fel. phorph. vol.
talus - outcrop

DP.73-10-B.103
Felsic phorph. vol.

timber
cleared
area

X663

2610

X665

2410

B654

X653

2110

DP.73-9-B.100
Sil. vol. barren

DP.73-9-B.101
barren vol. etc.

HILL

2010

B661

2010

B662

X662

3410

X661

2310

B667

X652

2010

B655

1610

B665

fel. vol. (barren)

B663

Meadow

X660

1810

X659

2110

X658

2811

X657

2810

B664

1610

B664

2210

CAMP

LAKE

FRENCH PEAK NE

■ - dark gray-green med. gr.
feld-phorph. vol. to light
siliceous andesite phorphrey -
no mineralization.

FRENCH
PEAK NE

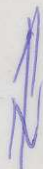
AIR PHOTO BC 1651:87
8 SEPT - 12 SEPT 1973
D. PARTRIDGE



FORESTRY CAMP
TURN OFF

20/0 U-124
17/0 U-120
U-121
21/0 U-122
U-123 ss
17/0 cong
21/0 U-126
20/0 U-126
20/0 U-126
20/0 U-126
20/0 U-126

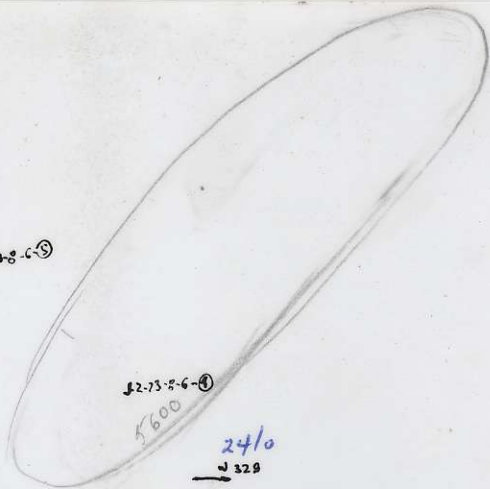
TWS x felsic porph
MA
AN
*14 hornfels
*13
dacite-
andesite



RC-1657-102



J2-13-8-6-③



24/0

W-329

W-117 → 10/0



21/0

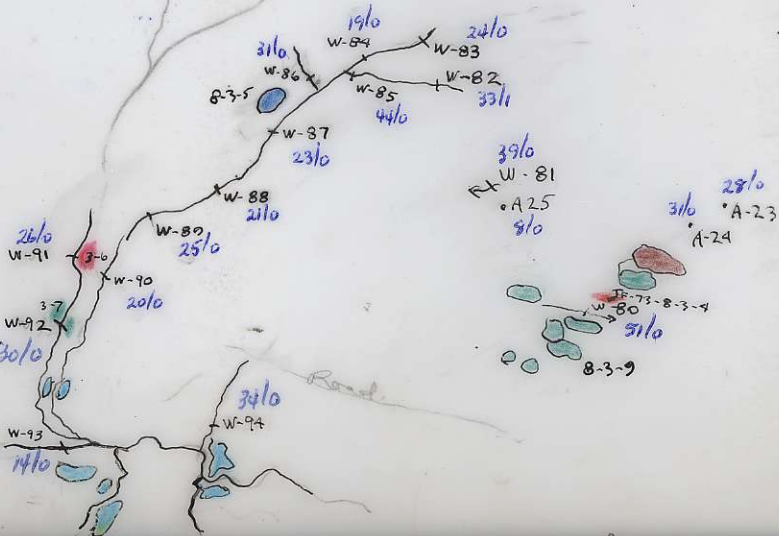
W-528

24/2

W-113

W-328

14/0

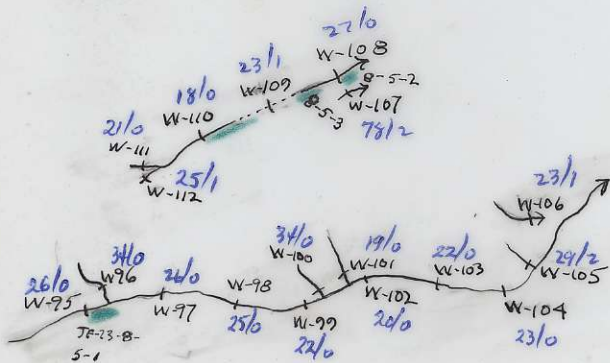


BC1651:83

1651104



BC 1651:103



⊗
CAMP

