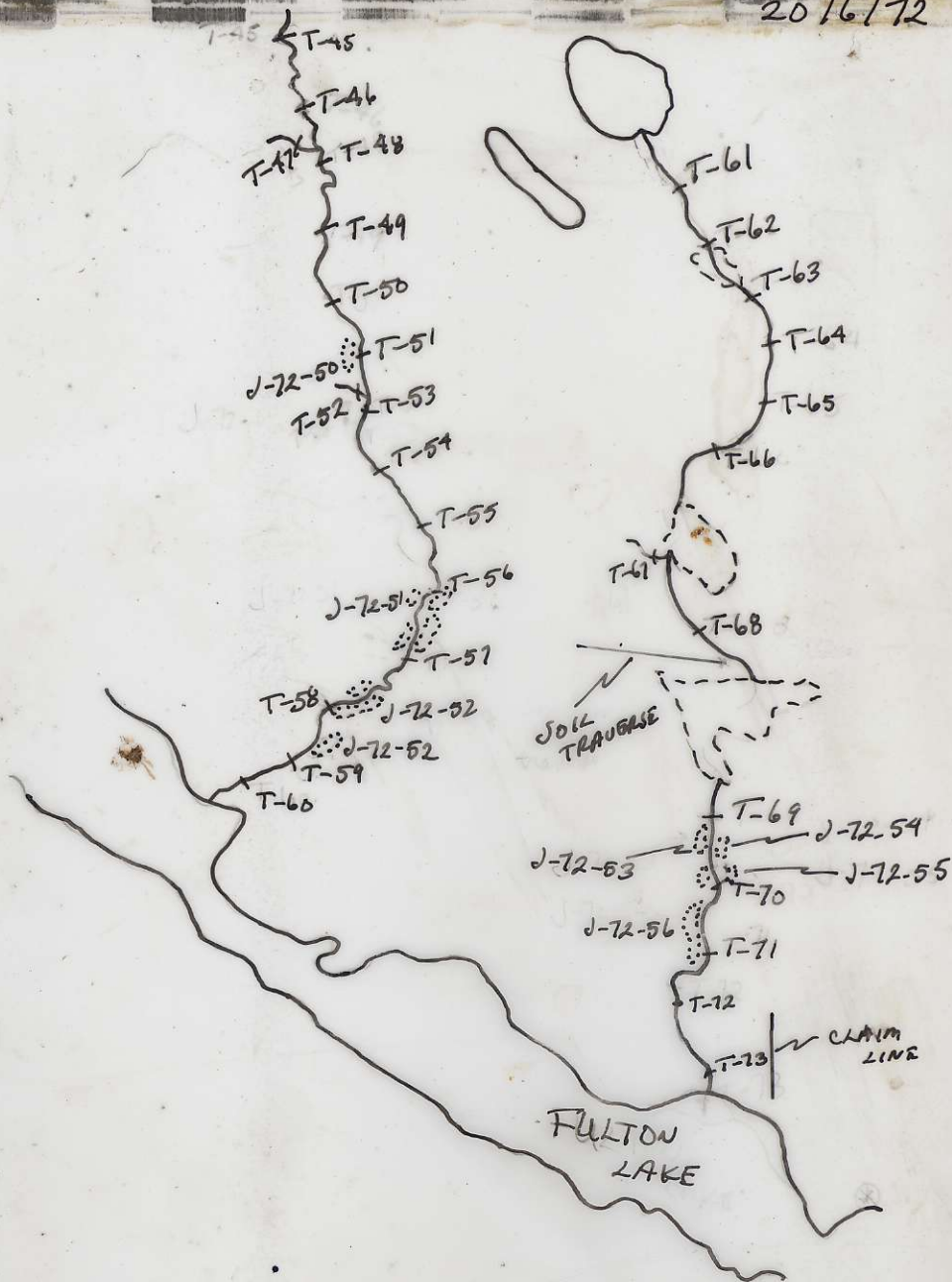


Terry James

674168

18/6/72

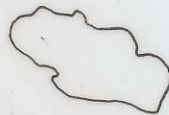
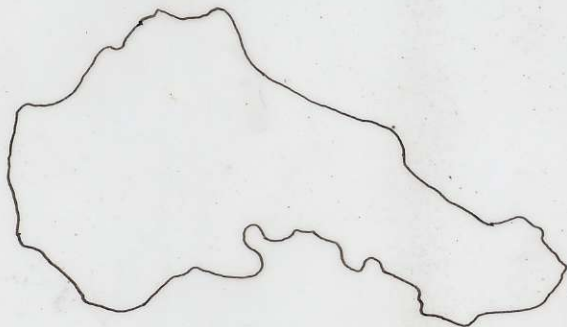
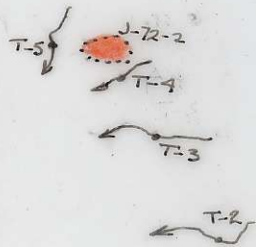
20/6/72



BC 5300-252
BC 5300-252

28/5/12

BC5033:165

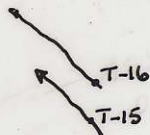
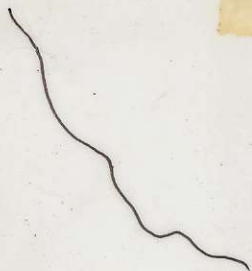
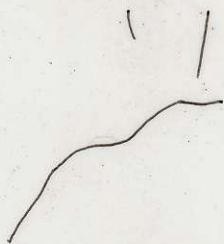


28/5/72
+
29/5/72

BC5216-218



30/5/72



J-72-13

J-72-14

POSSIBLE

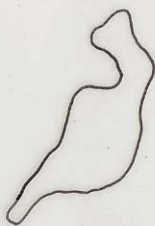
J-72-15

J-72-12

T-14

J-72-10

J-72-11



INTRUSIVE
216

3/6/72

SEE MAP

SEE MAP

236

J-72-16

T-20

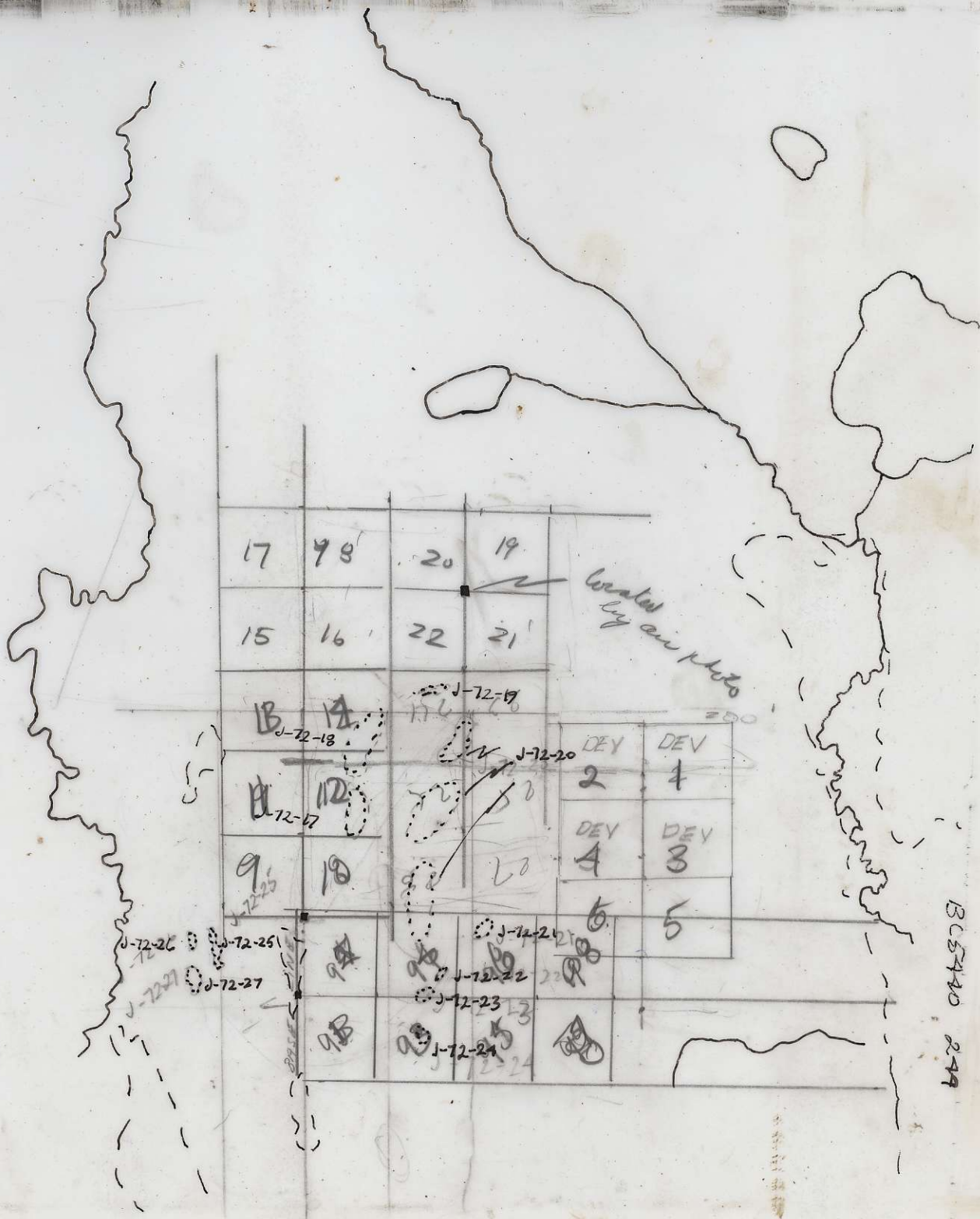
T-21

CLAIM LINE

BC5216-205

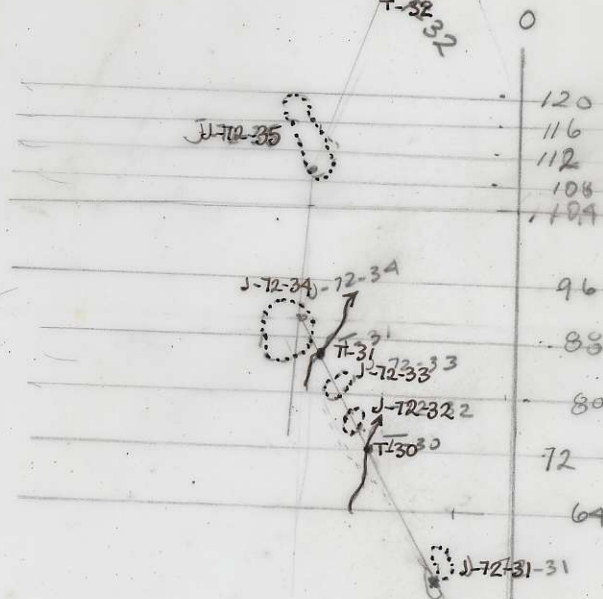
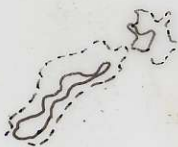


4/6/72



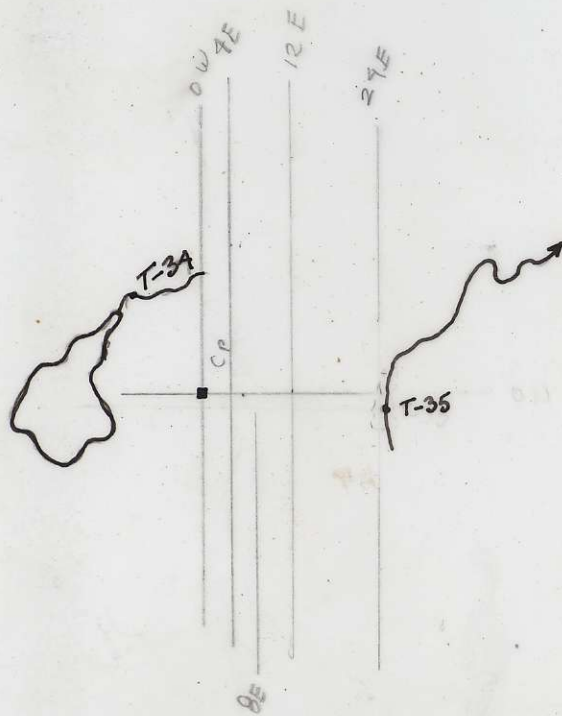
7/6/72

5216-070



BC5216-078

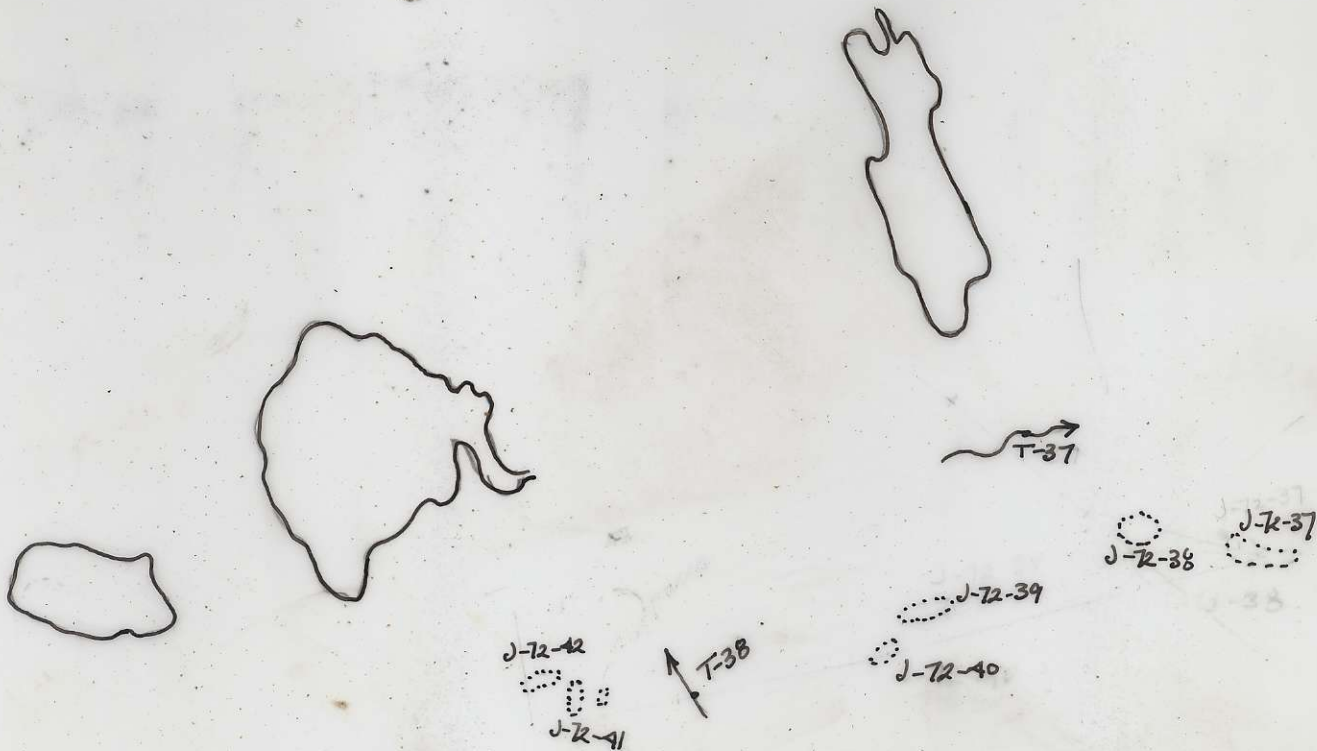
9/6/72



T-36

BC-52296-2033

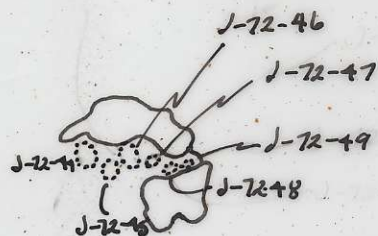
14/6/72



BC1596 16

BC1596:16

17/6/72



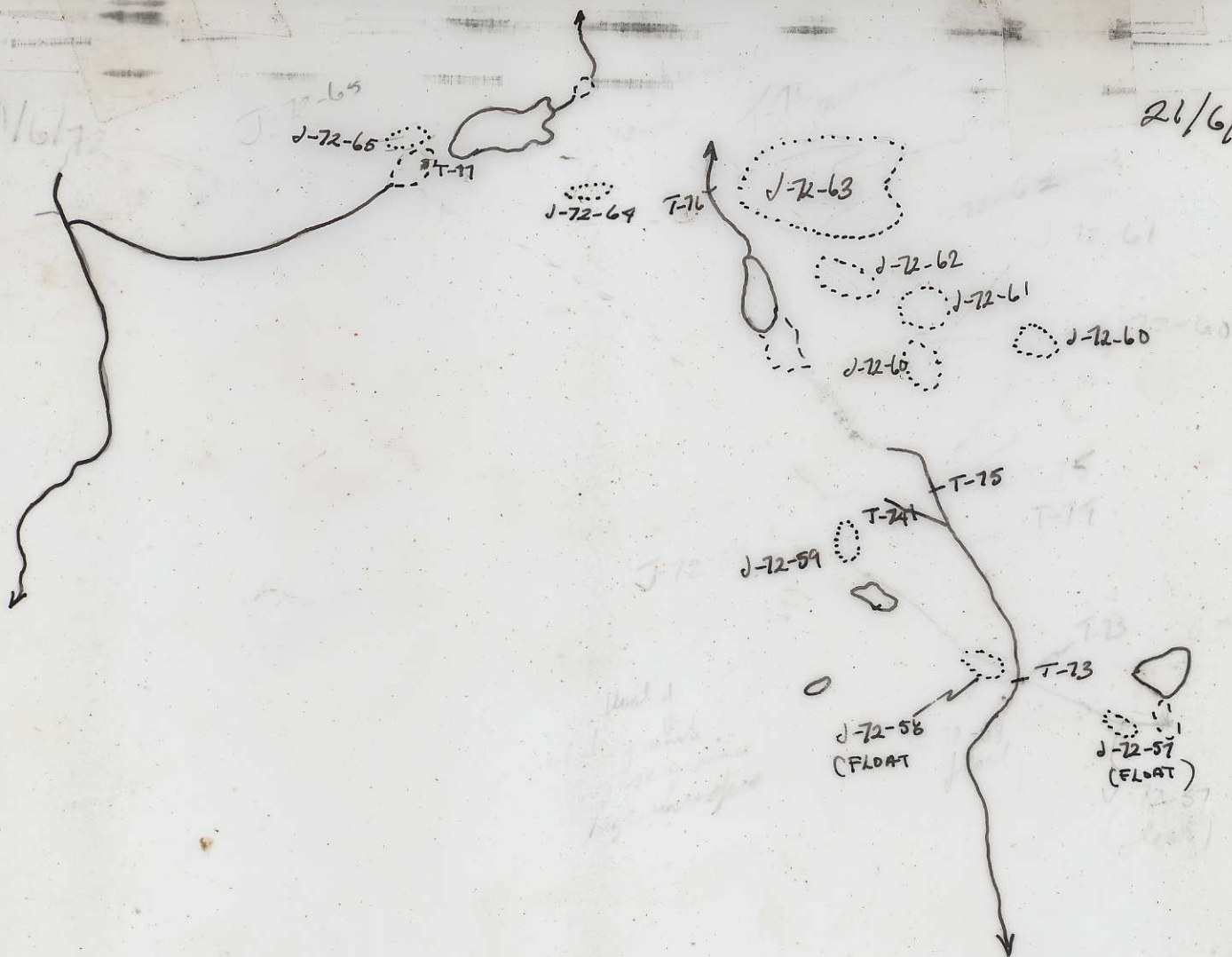
FULTON LAKE

BC 5200-165

BCS216-217
BCS216-217

21/6/72

21/6/72



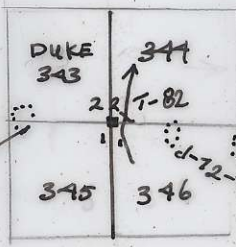
WRIGHT'S
BAY

25/6/72

J-72-67

J-72-63

T-80
J-72-69
T-81



CONGLOMERATE
(FLOAT?)
FRAGMENTS
OF H.F.P.



3

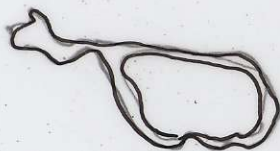
BC5300 178

25/6/72



DUKE 186	DUKE 185
T-18 DUKE 188	DUKE 187

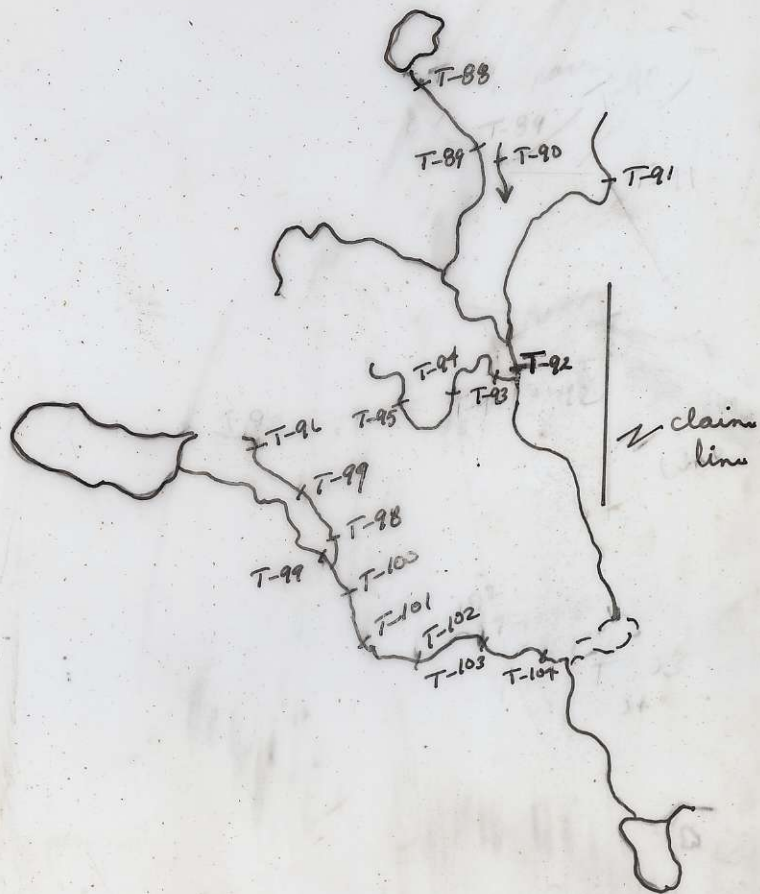
J-19
J-2-67



BC 5300 256

23/6/72

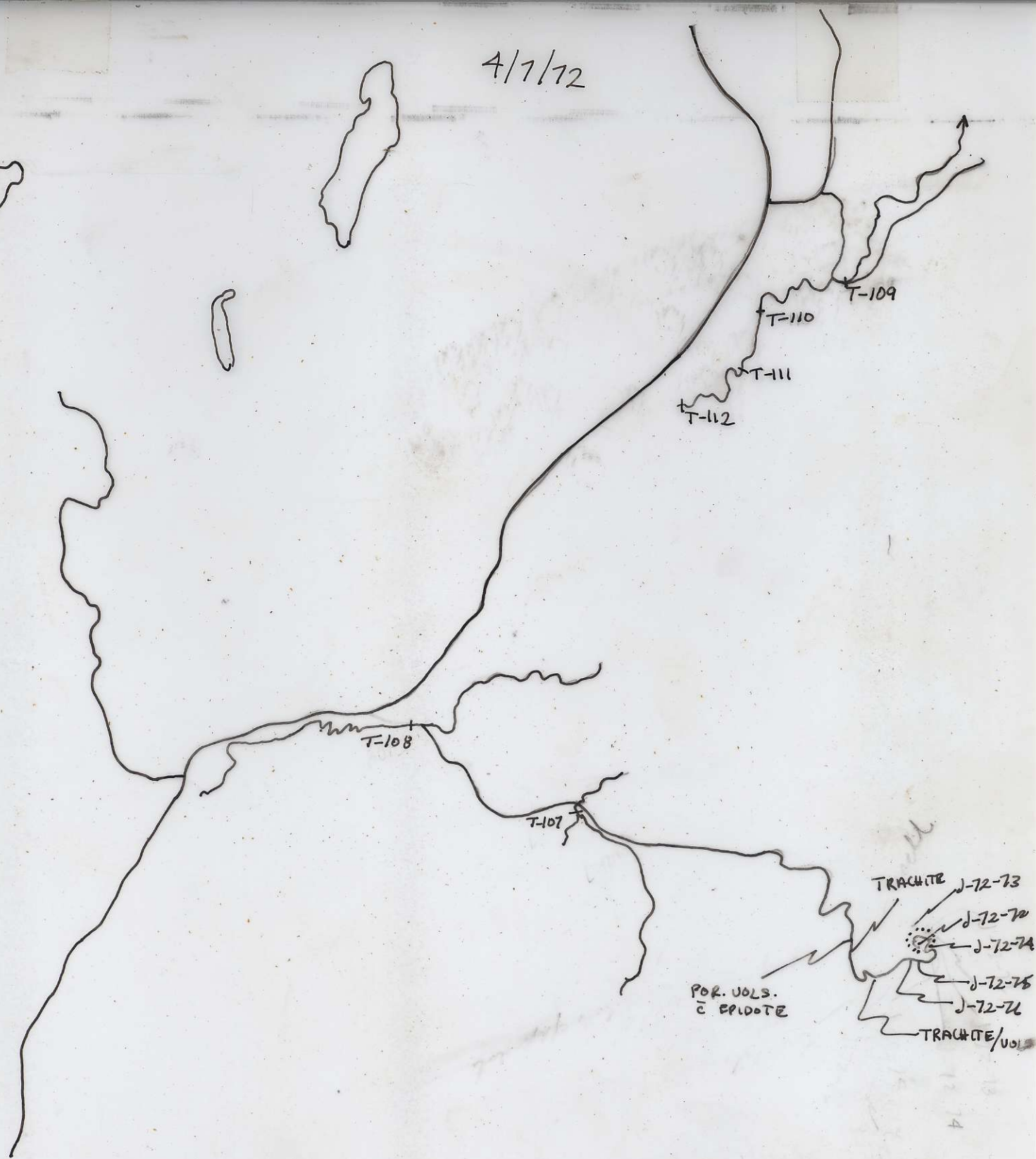
BC - 5300-192



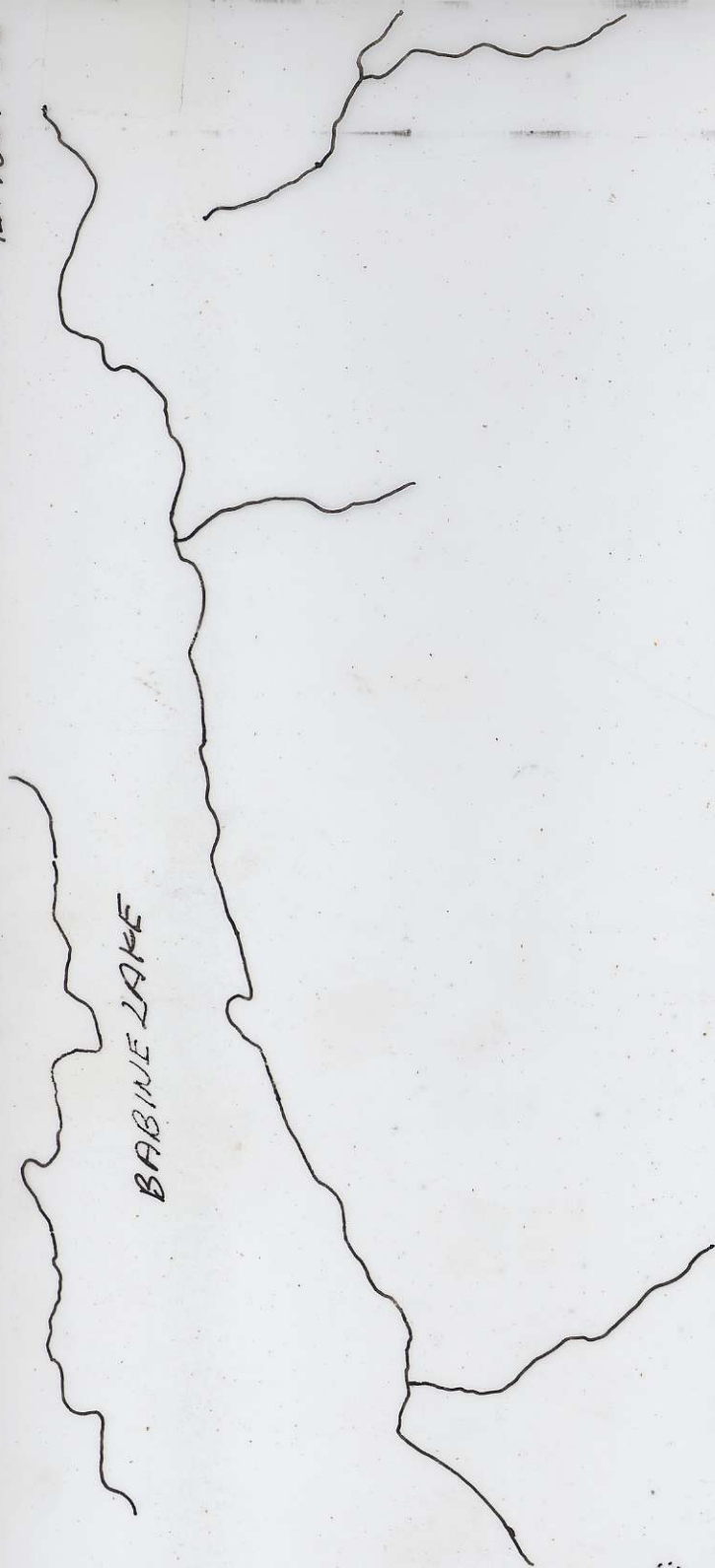
FULTON LAKE

4/7/72

BC5296-224



BC 1596.51



BABINE LAKE



7/7/72

J-72-86



J-72-84

J-72-83
J-72-82
J-72-81

BC 5216 215

17/6/72

+
9/7/72



J-72-87

T-114

J-72-88

T-115

J-72-89

T-116

J-72-90

J-72-91

T-117

J-72-92

J-72

T-39

T-41

T-40

T-42

T-43

T-44

D6-2-3

D6-2-4

D6-2-2

D6-2-1

T-118

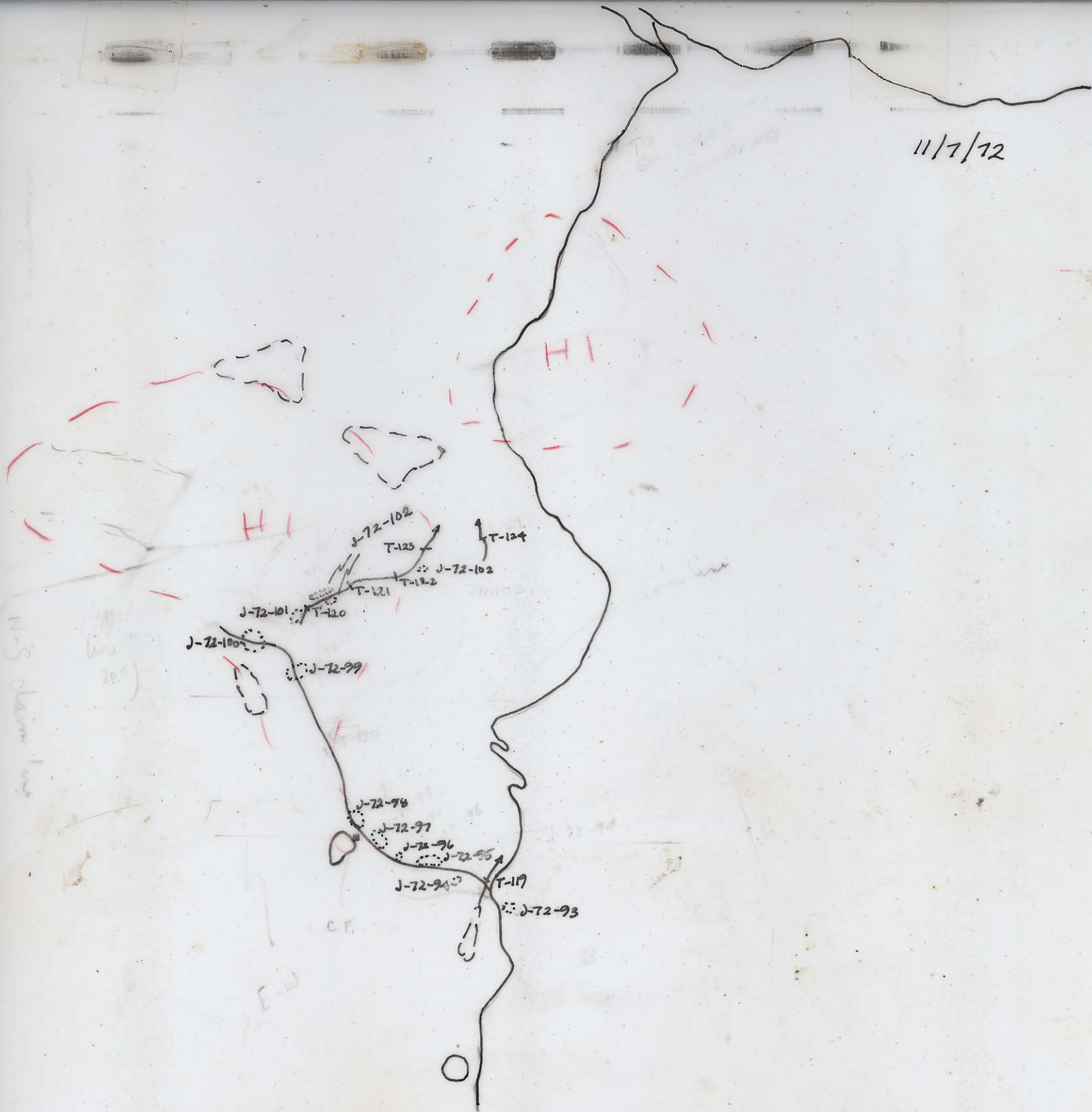
ECHO
TARGET #2 "SYENITE?"
ROCK SAMPLES

D6-2-1 to D6-2-5

← pollution

11/7/72

BC 5306-001



14/7/72

T-126

T-125

J-72-109

J-72-105

J-72-103

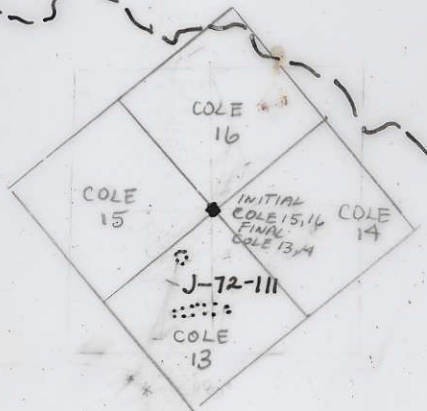
BC 5300-166

16/7/72

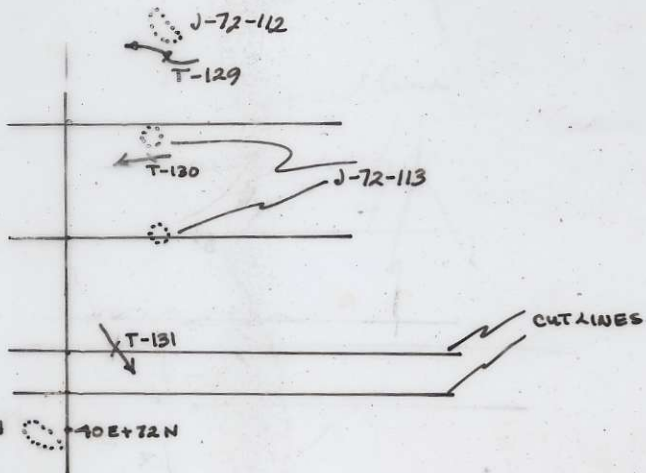


BC 5308-159

17/7/72



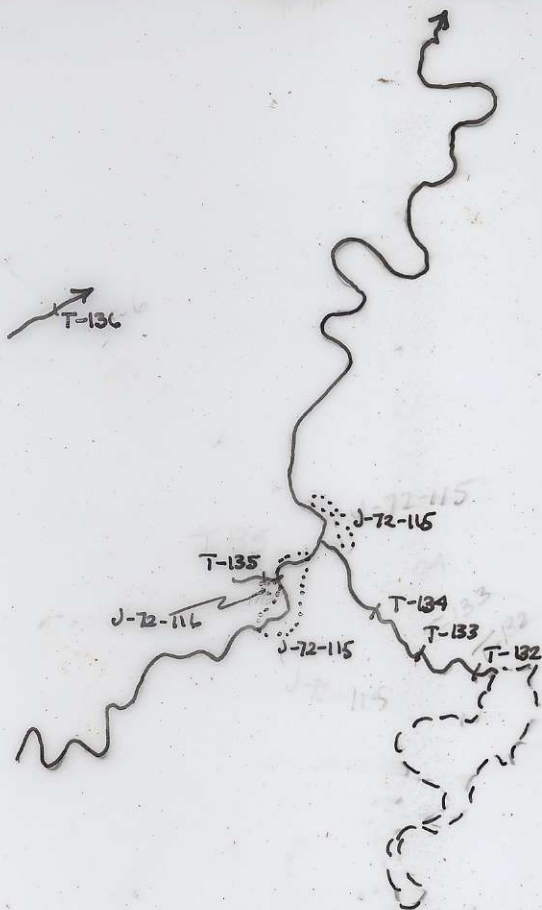
190°



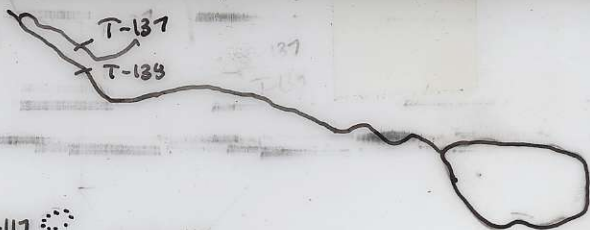
BC5300-256

18/7/72

BC5306-009



19/7/72



J-72-117

J-72-118
J-72-119
J-72-120

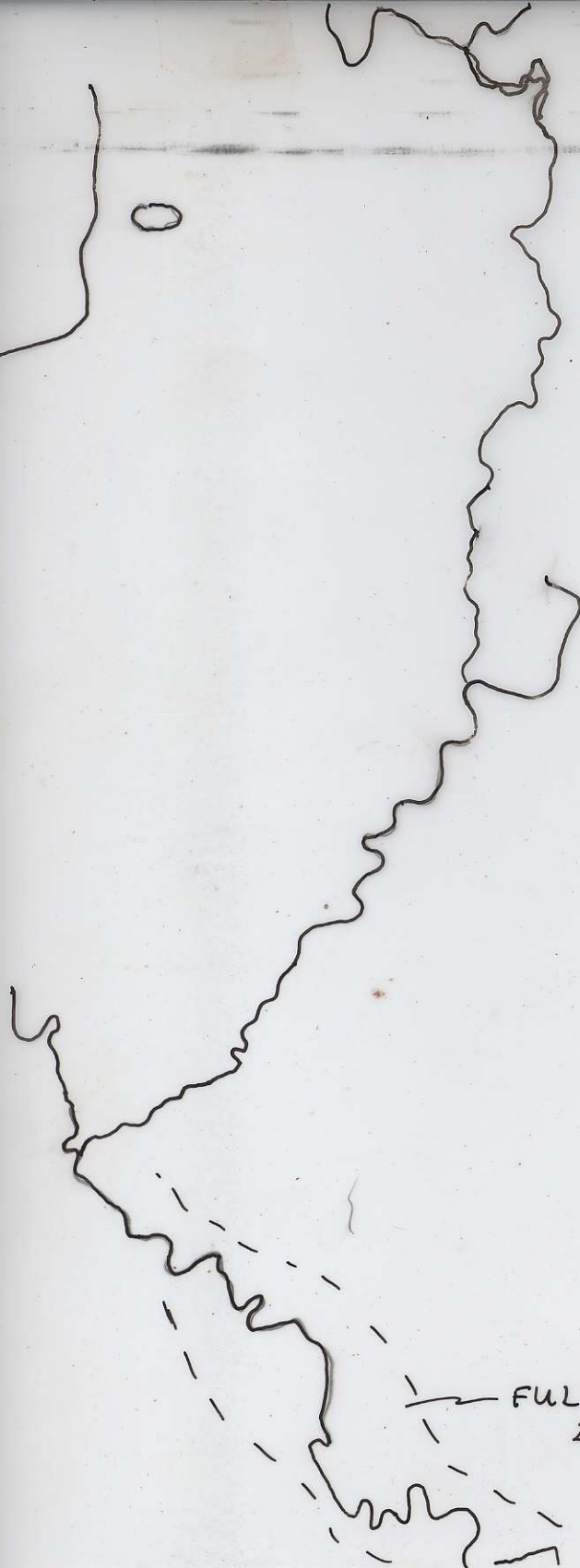
J-72-121

J-72-122

J-72-123

J-72-123

BC5306-006

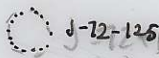


FULTON
LAKE
(NOW)

19/7/72

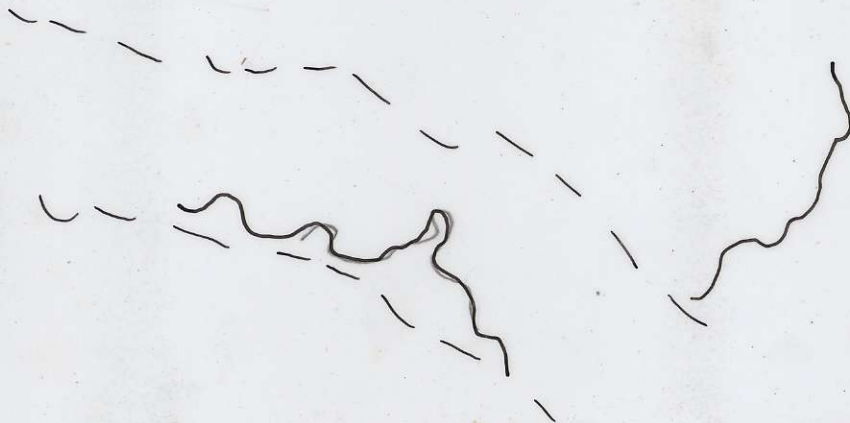
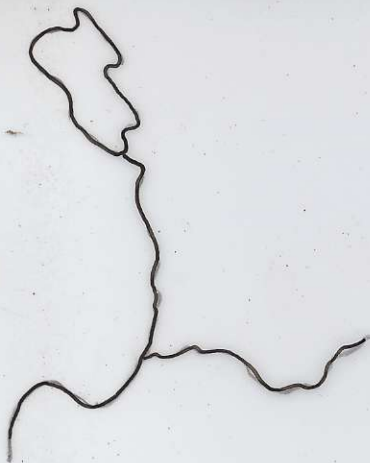


J-72-124



J-72-125

~~T-130~~
~~T-131~~



BC5300-253

25/7/72

BC 1596:50



T-140

T-141

T-142

T-143

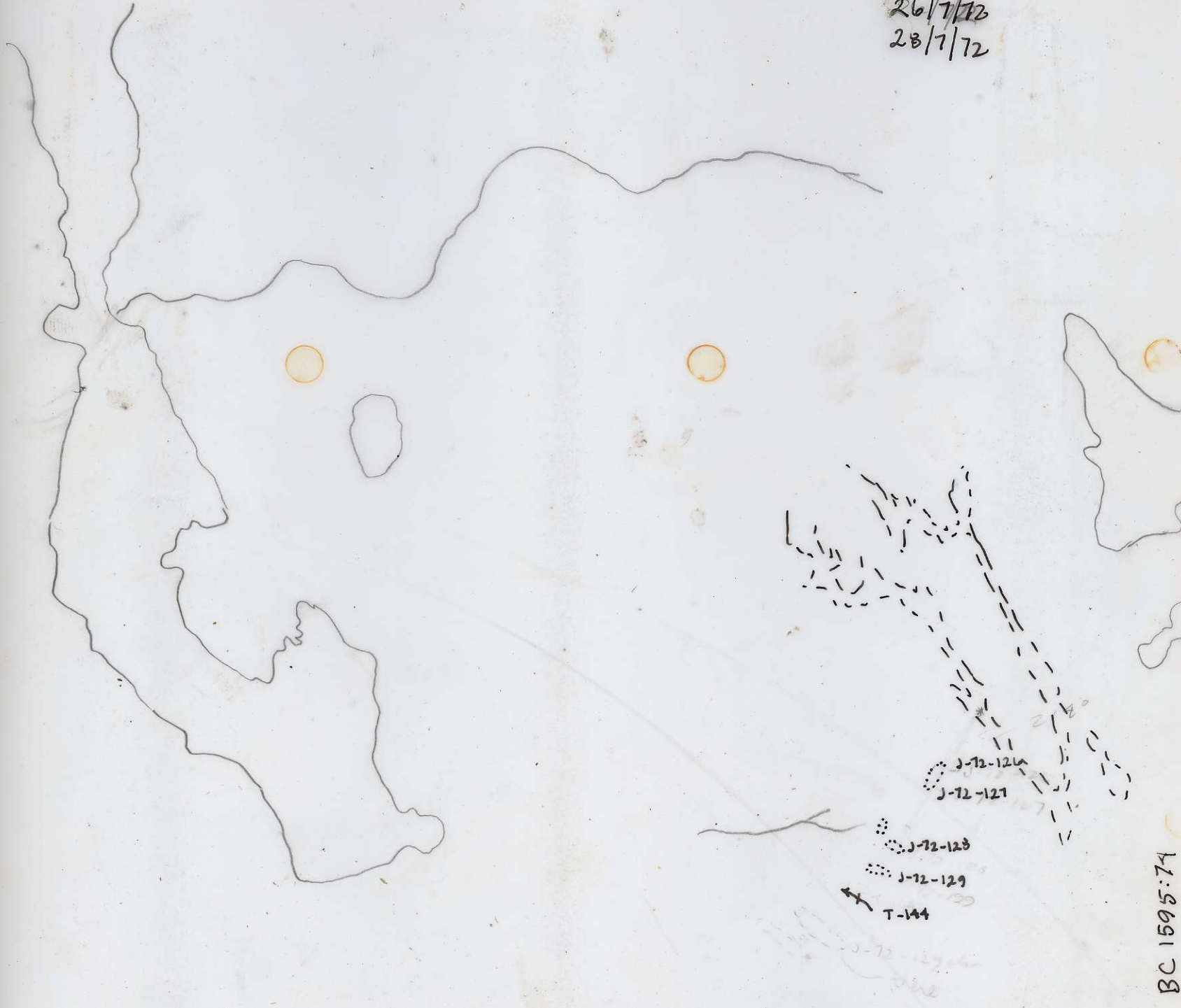
T-143

2050

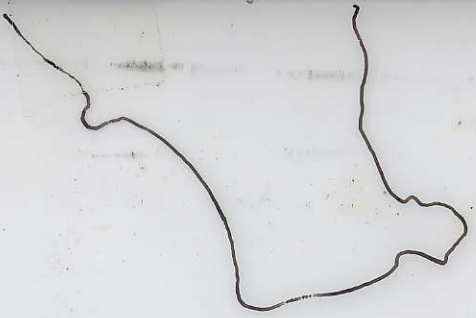


26/7/72

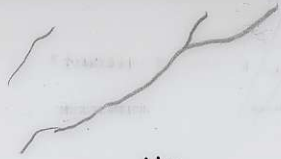
28/7/72



BC 1595:74



26/7/72
28/7/72



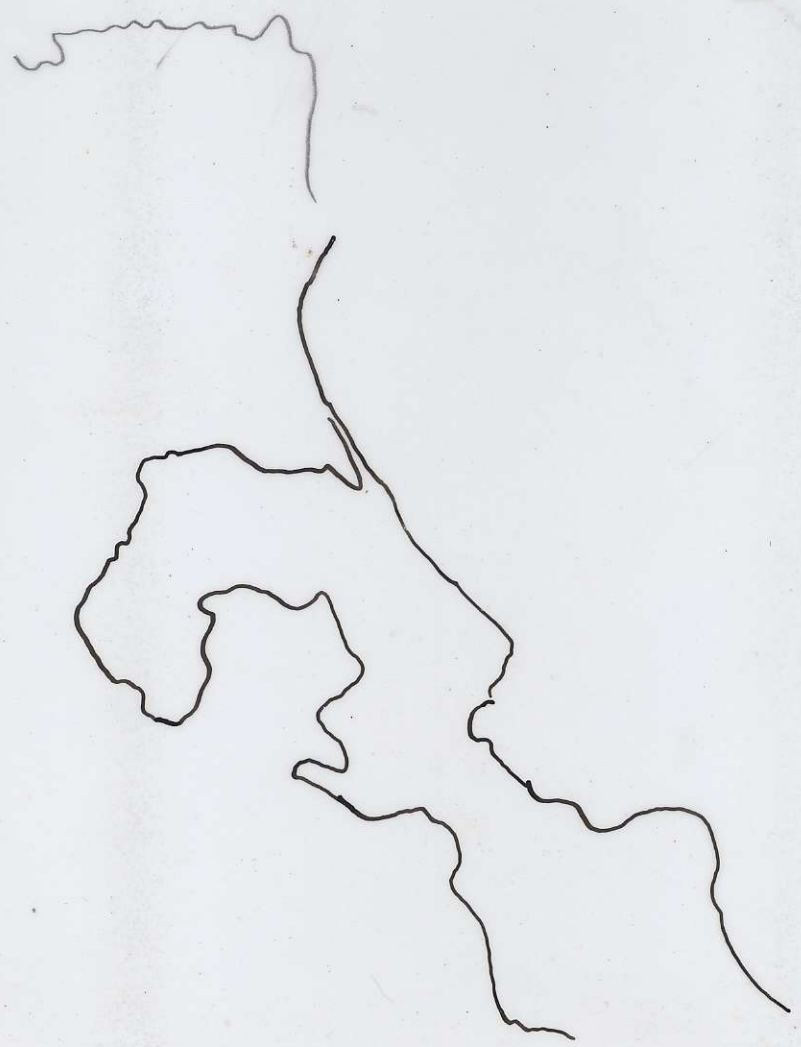
J-72-129

J-72-130

J-72-130

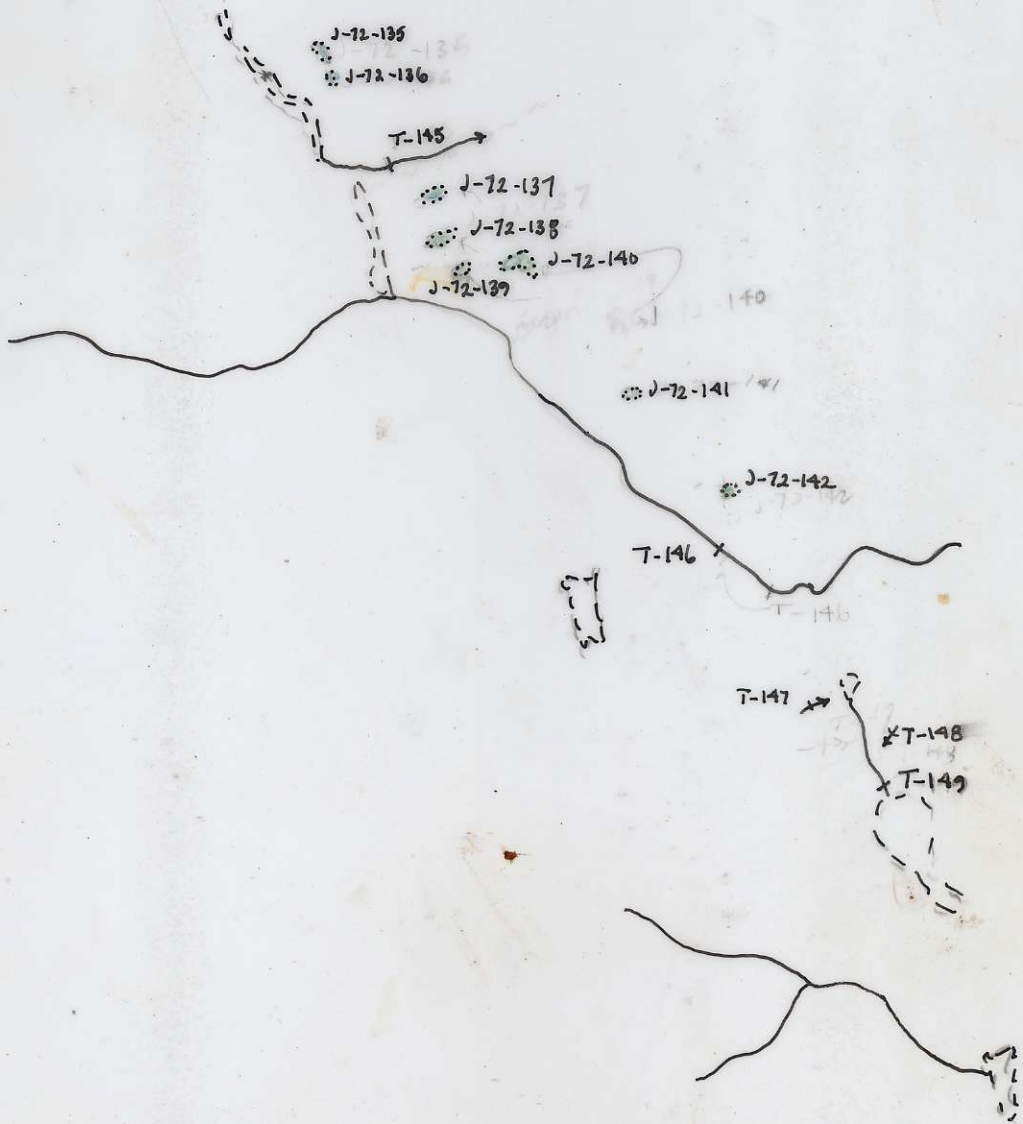
J-72-130

Handwritten notes, possibly including 'J-72-130' and other illegible text.

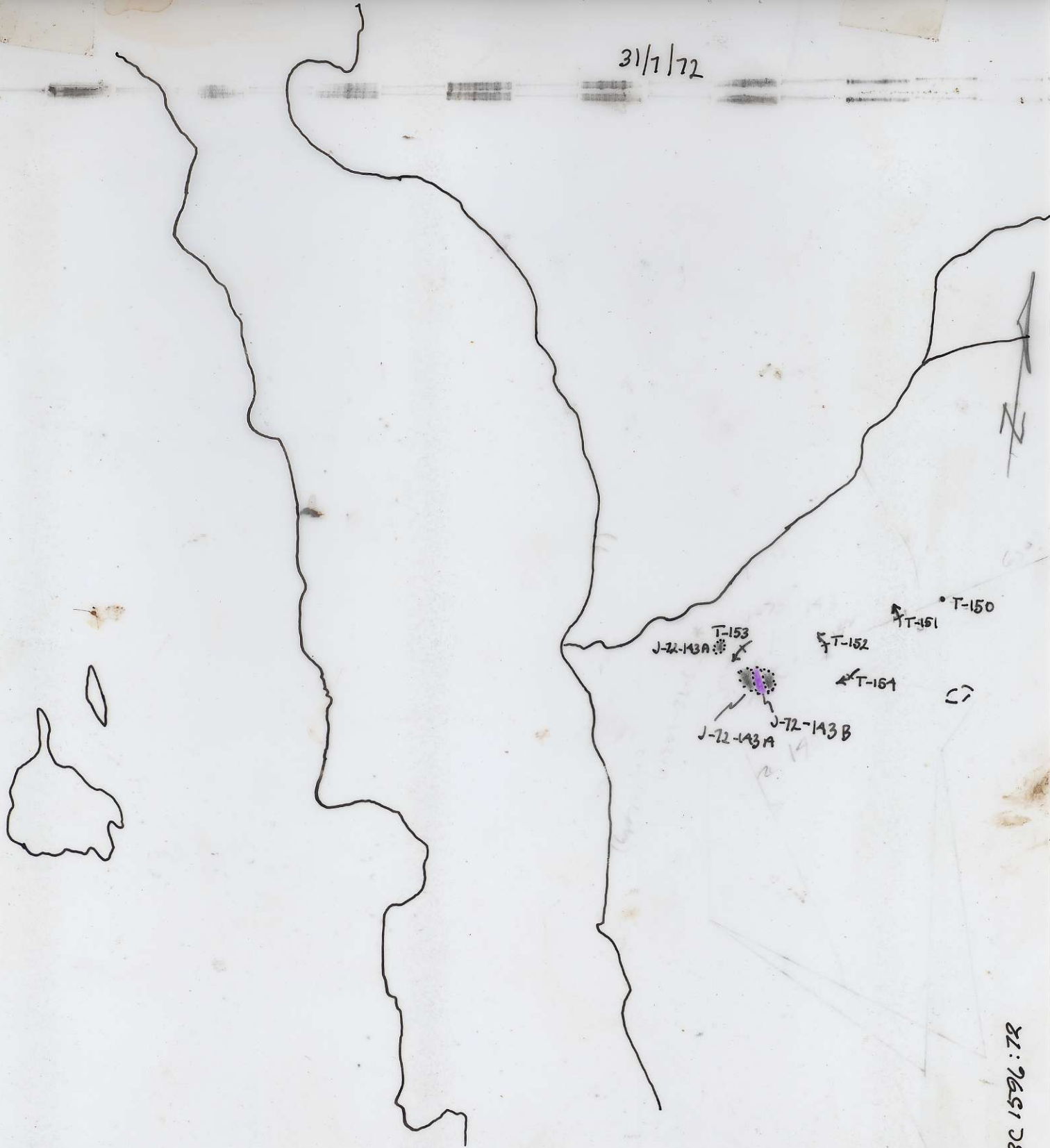


30/7/72

BC 1651:107



31/7/72



BC 1596:72

8/8/72

SATURDAY
LAKE

T-163



T-162

T-164



T-165

T-166



FULTON
LAKE

AUG 9 1972

FRENCH
PEAK



BC1651:81

19/8/72



BC 1596:16



BC 5300+251

T-162 - NO SAMPLE

T-163 102/0

T-164 46/0

T-165 70/4

T-166 37/0

approx.
boundary
of ~~AMMO~~
claims



↑
N
BC 5300.-252