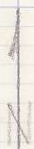


ALPHA-Q-2

Oct. 1972

approx. height of land



conglom. + coarse-gr. granite floats

fenced pasture

- hornblende ■
- feldspar porph. ■
- conglom. ▨
- Geo. Volcanics ▨

ROAD

- JF-511 ●
- JF-510 ●
- JF-512 (with pyrite) ●
- JF-513-17 (+ quartz veins) ●
- JF-518 (+ quartz veins) ●
- W-1050 ●

CAMP ROJO 1972

MT 1000H PRI

674166

PRINTED ON STEARBRINI 1000T

SOIL SAMPLES
A-207 - A-305
A-206 A-304
A-205 A-303
A-204 A-302
A-203 A-301
NS
A-300
A-202
A-201



ALPHA-D-1
Oct/72
B.C. 5067:13

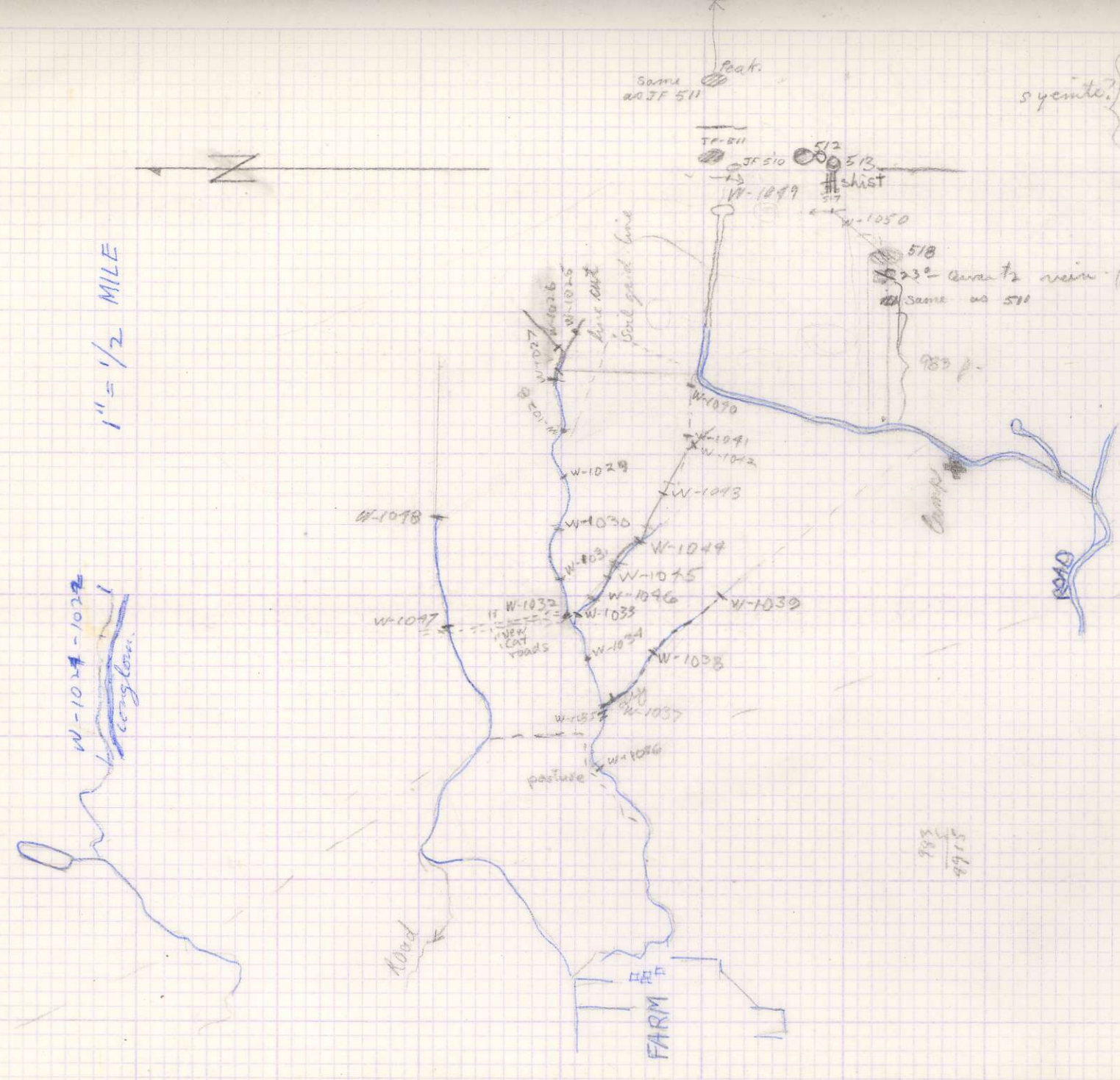
P146

fine-grained sediment
argill. to silty
Green volcanic + congl.
sandstone
Fine grained light gr. feldite

- 510 - soft green rd. porph.
- 511 - field porph + p. yrite.
- 513 - field porph + quartz veins
- 514 - porphyry near chert
- 515 - chert
- 516 - porph. field - more fine gr.
- 517 - porph. field "
- 518 - porph. field "

syenite?

1" = 1/2 MILE



BC: 5067-14.

FRASER RIVER

H.W.Y.

Australian Creek

Menzinger

Creek

Hill Lake

NICK C

STAR C

MB C

JH C

ALC

ALC

1" = 1 MILE

38	37	28	27
40	39	30	29

granite STRIKE			
HL	3		13
	2	4	14

P.A. 650'

