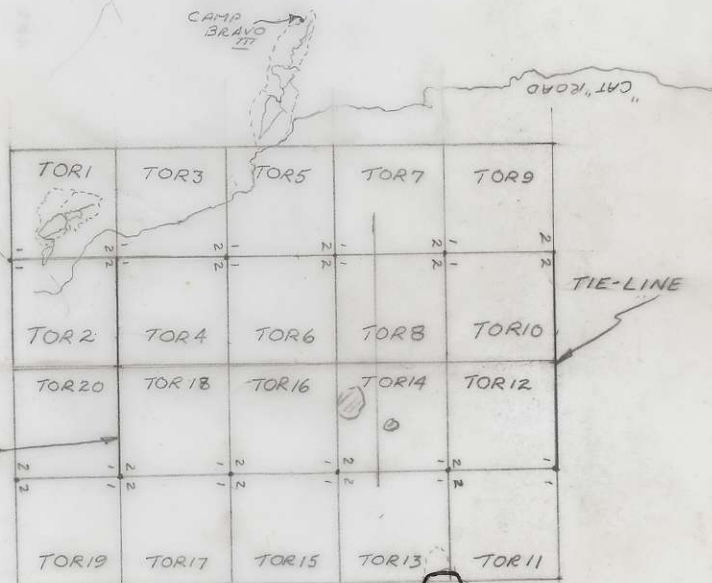


BRAVO
CAMP #3

BC 5195252

N



TOR GROUP

LOCATOR: D.B. BROWN

FOR: W.R. BACON

DATE: JUNE 23, 1972

- TO -

JUNE 24, 1972

674156

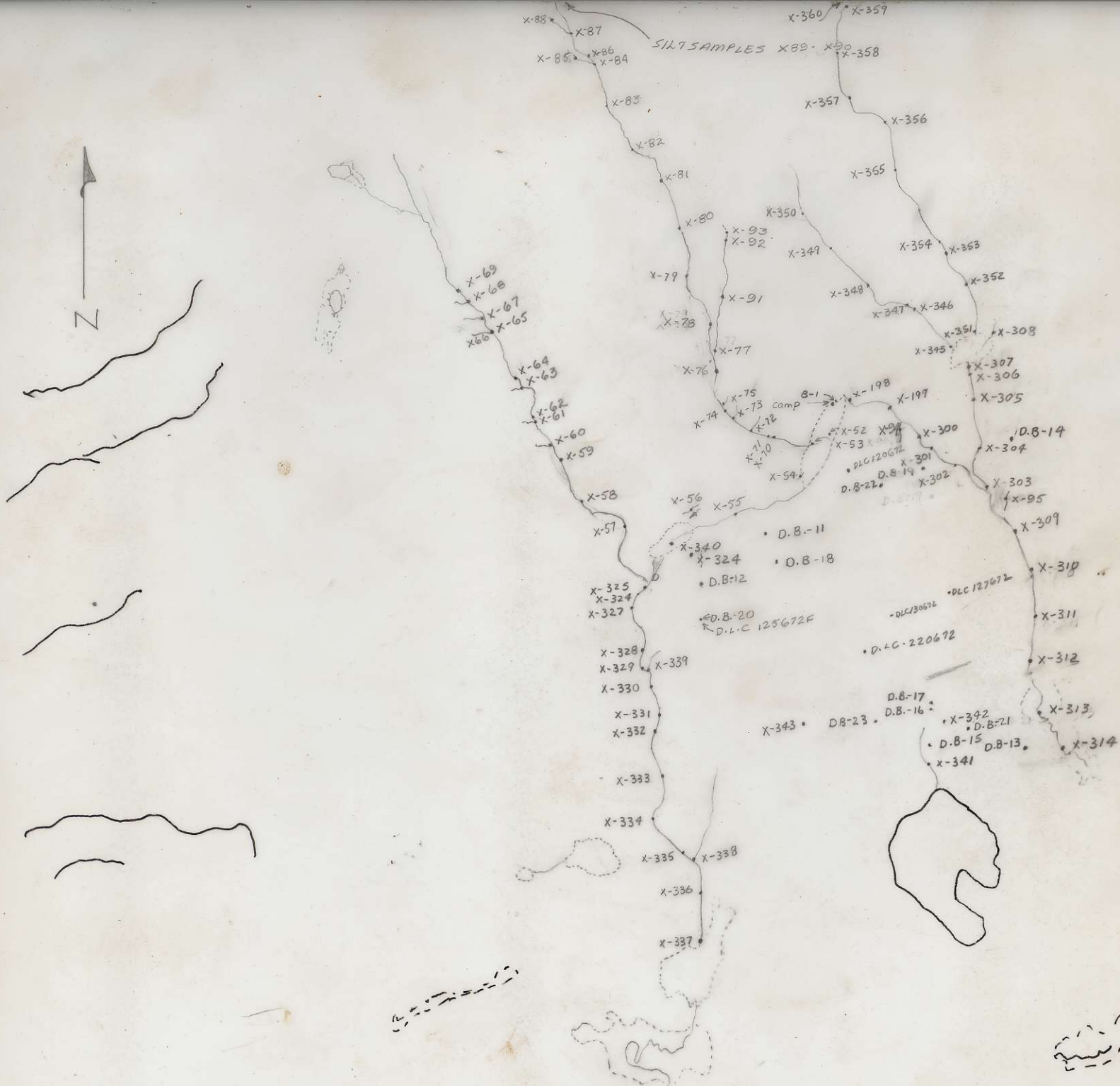
BRAVO 3 - SOIL GRID

JUNE 18-JULY 2, 1972

N.B. - NO SAMPLE - MARKED
ON LEFT SIDE OF LINE



BC 5195-262





LOW

HIGH

LOW

DLC
23.7.72 F
13.72 F

DLC
3.3.72
9.3.72 F

X-316

X-317
X-318

NOSE
OF
MA9

X-320

X-321

X-322

X-323

CHEMEX LABS LTD.
STREAM SEDIMENTS - WATER

COLLECTORS: DON BROWN
AREA: CAMP 3
FIELD MAP: BC S195-247
DATE: JUNE 15, 1972

RESULTS PLOTTED BY:
POSTING MAP:
DATE:

ANALYST:
METHOD: (A):
(B):
DATE:

SAMPLE NUMBER	NOTES LOCATION	SEDIMENT DATA					STREAM DATA						DRY GULLY	SPRING	SEDIMENT RESULTS							WATER RESULTS																
		Gravel	Sand	Silt	Clay	Organic	Bank	Active	Width	Depth	Velocity	pH			Field Tests			Lab. Tests				WATER RESULTS																
															Cu	HM		Mo	Cu	Pb	Zn																	
X-198	NE end of swamp	✓	✓	✓	✓		✓		6'	1'	S																											
X-199	1000' FROM 198 sampling	✓	✓	✓			✓		8'	2'	S																											
X-200	1030' FROM 199	✓	✓	✓			✓		7'	2'	S																											
X-301	400' FROM X-300-10' W	✓	✓	✓		✓	✓		1'	6"	M																											
X-302	1000' FROM X-300	✓	✓	✓			✓		7'	2'	M																											
X-303	760' FROM X-302 1/2 cr sampling	✓	✓	✓	N		✓		6'	1-2'	M																											
X-304	1000' N of X-303	✓	✓	✓			✓		5-6'	2'	M																											
X-305	1000' FROM X-304	✓	✓	✓			✓		8-10'	1'	S																											
X-306	660' FROM 305-30'E	✓	✓	✓		✓	✓		1'	2"	S																											
X-307	CR FLOWING FROM LAKE	✓	✓	✓			✓		2'	3"	M																											
X-308	CR FLOWING INTO N END OF SWAMP	✓	✓	✓		✓	✓		3'	1'	S																											
X-309	1760' FROM X-303 along same cr	✓	✓	✓			✓		10'	2'	M-F																											
X-310	1000' FROM X-309	✓	✓	✓			✓		10-15'	2'	M																											
X-311	1000' FROM X-310	✓	✓	✓			✓		6-8'	2'	S-M																											
X-312	1000' FROM X-311	✓	✓	✓		✓	✓		8-10'	2'	S																											
X-313	1000' FROM X-312	✓	✓	✓		✓	✓		20'	2'	S																											
X-314	1000' FROM X-313	✓	✓	✓		✓	✓		15'	1'	S																											

N.B. AT 620' FROM X-300 - CAT ROAD

* refer to air photo

CR. JOINS MAINSTREAM

* -> Beavers are damming the creek

CHEMEX LABS LTD.
STREAM SEDIMENTS - WATER

Handwritten signature

COLLECTORS: *D.L.C.*
BRAYD III
 AREA: *BC-195-252*
 FIELD MAP:
 DATE: *JUNE 16, 1972*

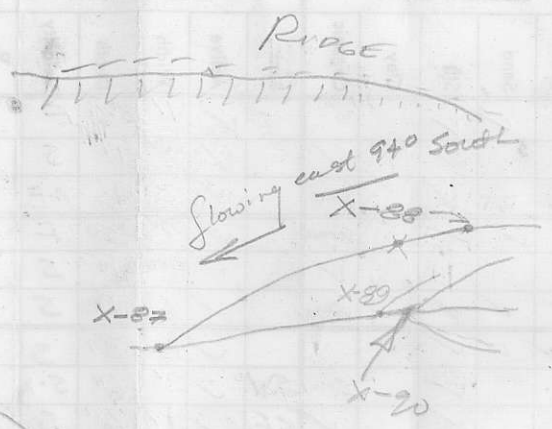
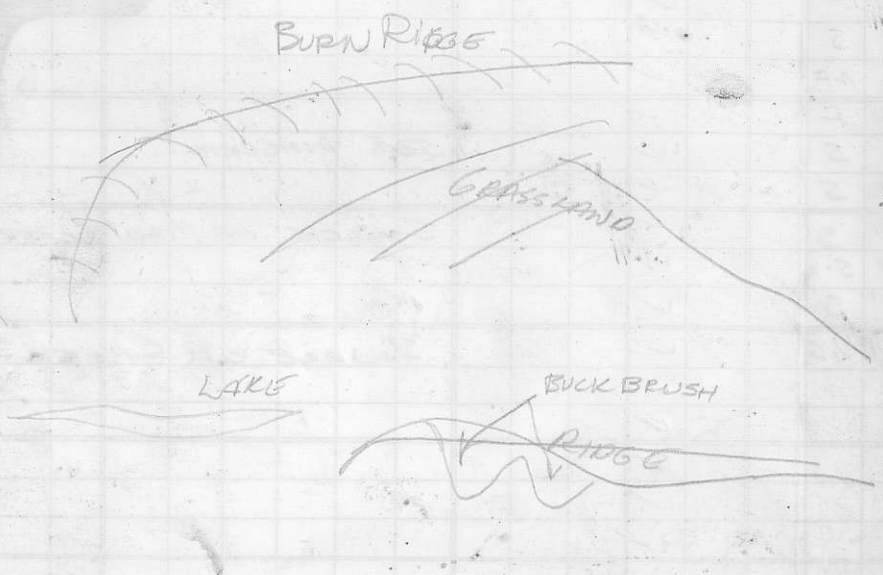
RESULTS PLOTTED BY: *[Signature]*
 POSTING MAP:
 DATE:
 ANALYST:
 METHOD: (A):
 (B):
 DATE:

NOTE (M) = MAIN CREEK - M = medium
 V = VERY
 S = SLOW

SAMPLE NUMBER	NOTES	SEDIMENT DATA					STREAM DATA						DRY GULLY	SPRING	SEDIMENT RESULTS						WATER RESULTS									
		Gravel	Sand	Silt	Clay	Organic	Bank	Active	Width	Depth	Velocity	pH			Field Tests			Lab. Tests			WATER RESULTS									
															Cu	HM		Mo	Cu	Pb	Zn									
X-70	935' from X-53			✓		Some	✓		1'	3"	S			✓																
X-71	(M) 1000' from X-53			✓			✓		5'	2'	M-F			✓																
X-72	350' from X-71			✓			✓		1'	3"	S-M			✓																
X-73	900' from X-71			✓		✓	✓		1'	2"	V.S.			✓																
X-74	(M) 1000' from X-71			✓		Some	✓		5'	1'	F			✓																
X-75	60' from X-74			✓			✓		1'	3"	S			✓																
X-76	(M) 1000' from X-74	✓	✓	✓			✓		3'	6"	V.F.			✓																
X-77	400' from X-76			✓		Some	✓		1'	6"	F			✓																
X-78	(M) 1000' from X-76		Some	✓			✓		5'	6"	V.F.			✓																
X-79	(M) 1000' from X-76	✓	✓	✓			✓		3'	6"	V.F.			✓																
X-80	(M) 1300' from X-79	✓	✓	✓			✓		4'	10"	V.F.			✓																
X-81	(M) 1000' from X-80	✓	✓	✓			✓		5'	10"	V.F.			✓																
X-82	(M) 1000' from X-81			✓			✓		5'	1'	F			✓																
X-83	(M) 1000' from X-82	✓	✓	✓			✓		3'	6"	V.F.			✓																
X-84							✓							✓																
X-85							✓							✓																
X-86							✓							✓																
X-87							✓							✓																
X-88							✓							✓																
X-89							✓							✓																
X-90							✓							✓																
X-91							✓							✓																
X-92							✓							✓																
X-93							✓							✓																
X-94							✓							✓																
X-95							✓							✓																
X-96							✓							✓																
X-97							✓							✓																
X-98							✓							✓																
X-99							✓							✓																
X-100							✓							✓																

* Creek flowing South. a change from S. S.E.
 * creek flowing S.W. from South.
 * creek flowing S. E. from S.W.

WATER REQUEST	SEDIMENT RESULTS				STATION	STREAM DATA		SEDIMENT DATA		NOTES
	Lab Test	Time Test	Ca	Mg		Flow	Temp	Grain	Moisture	



95
96
97
98
99
100
101
102
103
104
105
106
107
108
109
110
111
112
113
114
115
116
117
118
119
120

CHEMEX LABS LTD.
STREAM SEDIMENTS - WATER

COLLECTORS: DON BRANN
AREA: CAMP 3
FIELD MAP: BC 5195 - 252
DATE: JUNE 17, 1972

RESULTS PLOTTED BY: _____
POSTING MAP: _____
DATE: _____

ANALYST: _____
METHOD: (A): _____
(B): _____
DATE: _____

SAMPLE NUMBER	NOTES- LOCATION	SEDIMENT DATA					STREAM DATA						DRY GULLY	SPRING	SEDIMENT RESULTS						WATER RESULTS				
		Gravel	Sand	Silt	Clay	Organic	Bank	Active	Width	Depth	Velocity	pH			Field Tests			Lab. Tests							
															Cu	Hg		Mo	Cu	Pb				Zn	
X-324	^(M) Mainstream 2,960' FROM ROAD S of CAMP			✓			✓	1-1/2'	2"	S							* refer to air photo								
X-325	5,280' FROM ROAD S of CAMP			✓	✓ ^(M)		✓	4'	1'	M							* refer to air photo								
X-326	250' S of X-325-30' W		✓	✓			✓	1-2'	4-6'	S															
X-327	1000' FROM X-326	✓ ^(M)	✓	✓			✓	6'	6-1'	M-#															
X-328	1000' FROM X-327	✓ ^(M)		✓			✓	5'	6-1'	M															
X-329	410' FROM X-328-30' W			✓			✓	11'	1-2'	S															
X-330	1000' FROM X-329	✓ ^(M)		✓			✓	6'	6-1'	M															
X-331	660' FROM X-330-30' W			✓		✓	✓	1-2'	2"	S															
X-332	1600' FROM X-331	✓ ^(M)		✓			✓	6'	6-1'	M															
X-333	1000' FROM X-332	✓ ^(M)		✓			✓	3-6'	1'	M															
X-334	1000' FROM X-333	✓ ^(M)	✓	✓			✓	4'	2'	S-M															
X-335	1000' FROM X-334	✓ ^(M)	✓	✓			✓	6'	6"	M															
X-336	1000' FROM X-335	✓ ^(M)		✓			✓	6-8'	6-1'	S-M															
X-337	1000' FROM X-336	✓ ^(M)		✓			✓	4-5'	1'	S															
X-338	1890' N of X-337 - 70' E			✓		✓	✓	1-1/2'	2"	S															sampling other side of cr.
X-339	6800' N of X-337-30' E		✓	✓			✓	1'	6"	S															
X-340	1370' FROM X-325			✓		✓	✓	200'	?	S															beaver dammed lake. 200' N - CAMP'S FLAG.

**CHEMEX LABS LTD.
STREAM SEDIMENTS - WATER**

COLLECTORS: DON BROWN
 AREA: CAMP 3
 FIELD MAP: BC 5195-252
 DATE: JULY 3, 1972

RESULTS PLOTTED BY:
 POSTING MAP:
 DATE:

ANALYST:
 METHOD: (A):
 (B):
 DATE:

SAMPLE NUMBER	(M) MAINSTREAM NOTES LOCATION	SEDIMENT DATA					STREAM DATA						DRY GULBY	SPRING	SEDIMENT RESULTS							WATER RESULTS																				
		Gravel	Sand	Silt	Clay	Organic	Bank	Active	Width	Depth	Velocity	pH			Field Tests			Lab. Tests																								
															Cu	HM		Mo	Cu	Pb	Zn																					
X-345	FLOWING INTO SWAMP E of CAMP	(M)	✓					✓	3'	1'	S																															
X-346	1000' NW of X-345 (M)		✓	✓				✓	3'	6"	S																															
X-347	140' FROM 346 - 10' W			✓				✓	1'	2"	S																															
X-348	1000' FROM 346 (M)			✓				✓	1'	4"	S																															
X-349	1000' FROM 348 (M)		✓	✓				✓	1'	2"	S																															
X-350	900' FROM 349 (M)		✓	✓				✓	6"	2"	S																															
X-351	flows into same swamp as 345 (M)			✓				✓	3'	1'	S																															
X-352	1000' N of X-351 (M)		✓	✓				✓	4'	6"	S																															
X-353	880' FROM 352 - 50' NE			✓				✓	1'	2"	S																															
X-354	1000' FROM 352 (M)			✓				✓	3'-4'	4'-6"	S																															
X-355	1000' FROM 354 (M)		✓	✓				✓	4'	6"	S-M																															
X-356	1000' FROM 355 (M)		✓	✓				✓	4'	6"	M																															
X-357	1000' FROM 356 (M)		✓	✓				✓	4'	4"	M																															
X-358	1000' FROM 357 (M)		✓	✓				✓	3-4'	4'	S																															
X-359	1000' FROM 358 (M)		✓	✓				✓	4'-5'	8'	S																															
X-360	1000' FROM 359 (M)		✓	✓				✓	4'	4"	M																															

cr. ends - goes underground

* REFER TO AIR PHOTO

BRAVO III
JUNE 29, 1972

DEAR CAM & TERRY:

THE TOR GROUP OF 20 CLAIMS IS COMPLETE. AS WELL AS TWO TIE LINES AT THE EAST END OF THE CLAIMS AND BETWEEN FINAL TOR 1 & 2 POST AND INITIAL TOR 19 & 20 POST. THERE IS A FRACTION OF 27' AT THE SECOND TIE LINE. AS YET WE HAVE NOT STAKED IT.

WE ALSO FINISHED SOIL LINES 44E, 48E AND 52E. SAMPLES ON THESE LINES WERE TAKEN EVERY 200' WITH LINES 400' APART.

PROSPECTING HAS BEEN DONE ALONG THE TIE LINES, CLAIM LINES AND SOIL LINES. NO MINERAL FOUND YET!

WE PROPOSE A MOVE TUESDAY JULY 4, 1972; UNLESS YOU WOULD LIKE US TO FILL IN THE SOIL LINES BETWEEN 60E AND 32E WHICH HAD BEEN DONE 800' APART. IF SO WOULD YOU LET US KNOW ON FRIDAY'S "RADIO SCED."

THANKS

LARRY & DON.

P.S. THE CLAIM #'S ARE:

TOR 1	229101 m	TOR 6	229106 m	TOR 11	229111 m
TOR 2	229102 m	TOR 7	229107 m	TOR 12	229112 m
TOR 3	229103 m	TOR 8	229108 m	TOR 13	229113 m
TOR 4	229104 m	TOR 9	229109 m	TOR 14	229114 m
TOR 5	229105 m	TOR 10	229110 m	TOR 15	229115 m

2.

TOR 16 229 116 m
TOR 17 229 117 m
TOR 18 229 118 m
TOR 19 229 119 m
TOR 20 229 120 m

TOR 9	TOR 7	TOR 5	TOR 3	TOR 1
TOR 10	TOR 8	TOR 6	TOR 4	TOR 2
TOR 12	TOR 14	TOR 16	TOR 18	TOR 20
TOR 11	TOR 13	TOR 15	TOR 17	TOR 19

TIE LINE

TIE LINE

THINGS BRAVO NEEDS:

1. MOUSE TRAP OR RAT POISSON
2. BARBEQUE SAUCE
3. BAKING POWDER & SODA.
4. MOSQUITO COILS.
5. ~~SP~~ SPEED SEW
6. MOSQUITO NETTING.

N.B. Also, if you want us to fill in the affidavits for the TOR group of claims, tell us on Friday's radio sched. (ie. Say, "Fill in the score sheets.")

BRAVO - CAMP #3

TYPE #1

Massive green-black fine-med. grained
andesite

DLC 3-3-7-72 (F)

DLC 2-3-7-72 F

DLC 1-3-7-72 F

DB-23 (little pyrite)
DB-11

TYPE #2

Feldspar porphyry - dautin

little pyrite

DLC 130672 F

TYPE #3

Felsit with quartz eyes - rhyolite

DB-19 (dyke)

DB-22

TYPE #4

lysoot

biotite feldspar porphyry (A-max)

- lots of pyrite

DLC 4-3-7-72 F