

674107

Jean Marie Camp

Samples not plotted

can most accurately be plotted from notes, which tell what sample flags are close to them.

Sorry for mess.

I hope this will help, and believe you will be able to find flags easier by trying to fit these sketches to airphotos and using altimeter than by expanding map.

Camp El. 3380

Z-337 El 4090 Close to Flag A J 04N14E

Z-338 El 3560

Z-339 El 3875 brook flowing 060°
first brook past outcrop

Z-340 El. 3875 - 200' North - large // brook

Z-341 El 3915 - small brook flowing SE

D-61 El 3460 \approx 20 minutes at \approx 120° from Camp

Z-342 El. 3420 - small cr. flowing South-easterly

D-62 El 3370 - brook short distance to South
flowing easterly - no silt.

D-63 El 3460 ridge \approx 10 min. south of above
brook

Z-343 El. 3260 creek flowing \approx 125° from two beaver

Z-344 El. 3210 same cr. just above beaver lakes ^{Ponds}

Z-345 El. 3170 creek below beaver lakes \approx 1/2 mile.

Z-346 El 3540 brook flowing \approx 90° sample

Y-7 is further up same brook

Very low grade Chalco at El. 4000' up hill to
S.W. of Y-10 + Y-11.

D-64 El. 4040 - very near flag C-46

D-65 El. 4150 - further up hillside to S.W.

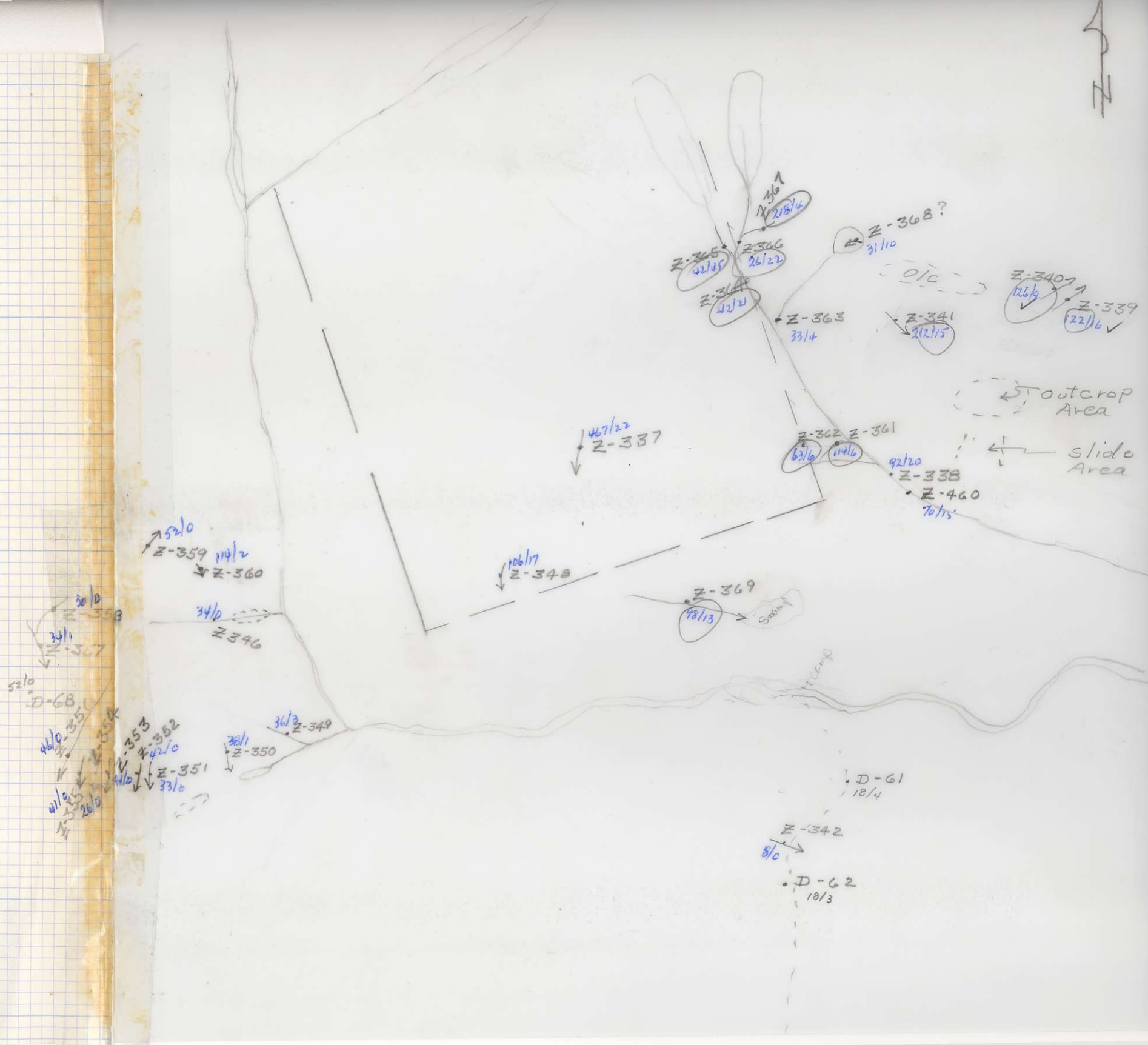
Top of Hill 4320

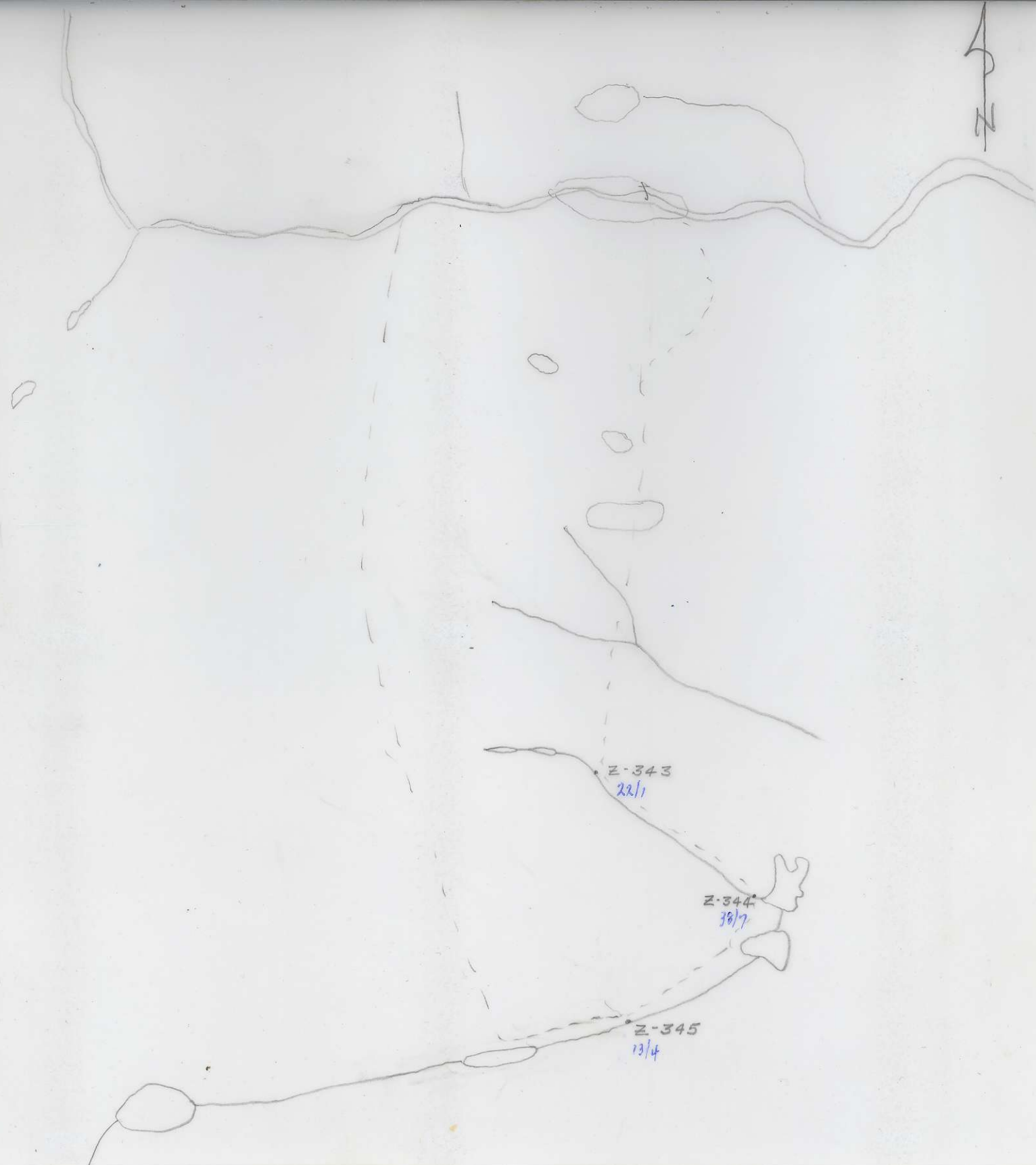
D-67 El. 4310 - down gully and starting up knoll
to west.

Z-347 El. 3900 - small creek flowing northerly
Y-48 is approx. 500' down same cr.

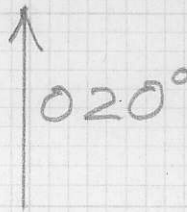
Z-348 El. 3550 - believe this is in your claims
and may be same cr. as Z-337

- Z-349 EI 3430 - small brook west of
confluence
Very poor organic
- Z-350 EI 3450 - small cr. flowing southerly
- Z-351 EI 3470 - brook flowing southerly
- Z-352 EI 3530 - 11 brook, 100 yds. S.W.
- Z-353 EI 3640 - brook flowing southerly \approx 700' SW.
- Z-354 EI 3620 - ✓ ✓ ✓ \approx 100 yds. ✓
- Z-355 EI 3600 - small cr. 200' SW.
- Z-356 EI 3620 - med. cr. flowing southerly in
deep gully \approx 100 yds SW.
- D-68 EI 3900 - NW up slope.
- Z-357 EI 4020 - creek flowing south-easterly
- Z-358 EI 4100 - \approx 500' up - rt. fork of above cr.
- Z-359 EI 4030 - brook flowing to N.W. sample
W-56 is 300' down.
- Z-360 EI 3880 - small brook flowing to N.E.
- Z-361 EI 3720 - small brook flowing N.E. in
second gully
- Z-362 EI 3780 - up creek \approx 200' \approx 500' last silt
- Z-363 EI 4000 - trib. creek
- Z-364 EI 4070 - main creek \approx 300' down from Y-42
- Z-365 EI 4090 - left fork
- Z-366 EI 4090 - right fork
- Z-367 EI 4120 - right trib. brook
- Z-368 EI 4140 - brook in meadow on way home
- Z-369 EI 3530 - creek flowing easterly into meadow.





Soil Sampling
"A" anomaly



22-D-50 46-D-51

122-D-49 194-D-52

44-D-21 134-D-20 56-D-48 152-D-53

40-D-22 64-D-19 36-D-47 51-D-54

51-D-18 42-D-46 250-D-55

40-D-23 122-D-17 33-D-45 ~~212~~

34-D-24 20-D-16 60-D-44 220-D-56

34-D-25 20-D-15 28-D-43 30-D-57

16-D-26 60-D-14 26-D-42 50-D-58

42-D-27 34-D-12 21-D-41 60-D-59

Approx
Contact

Unburned
burn

31-D-28 30-D-13 34-D-40 31-D-60

38-D-39

18-D-29 20-D-30

JEAN MARIE - DELTA CAMP #3

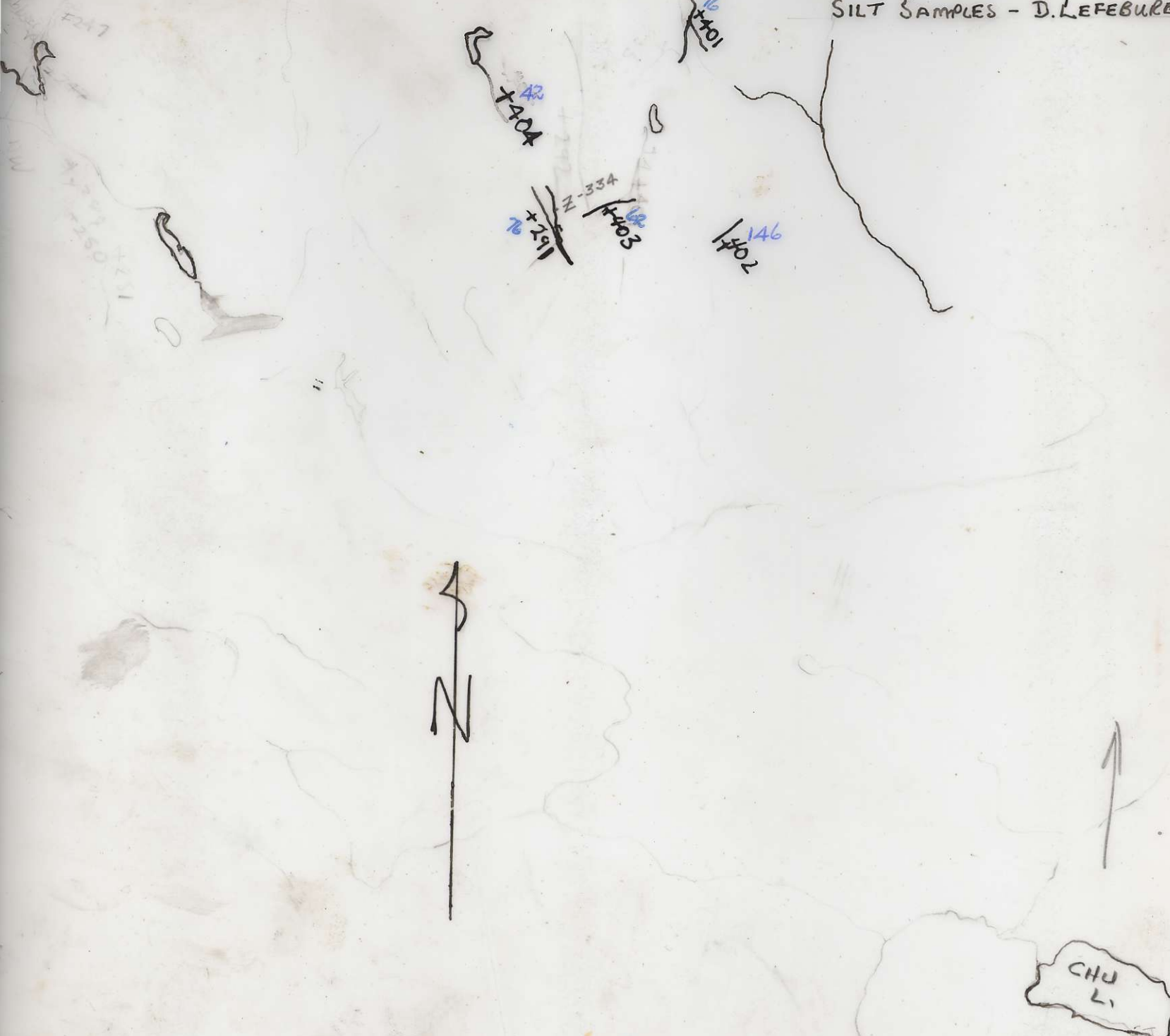
JUNE 25 - JULY 5 / 70

SILT SAMPLES (Z) - D. LEBBOURE



BC 2054:20

JEAN MARIE - DELTA #3
JUNE 25 - JULY 5/70
SILT SAMPLES - D. LEFEBURE



112/1
50A
+



JEAN-MARIE CREEK - DELTA CAMP #4

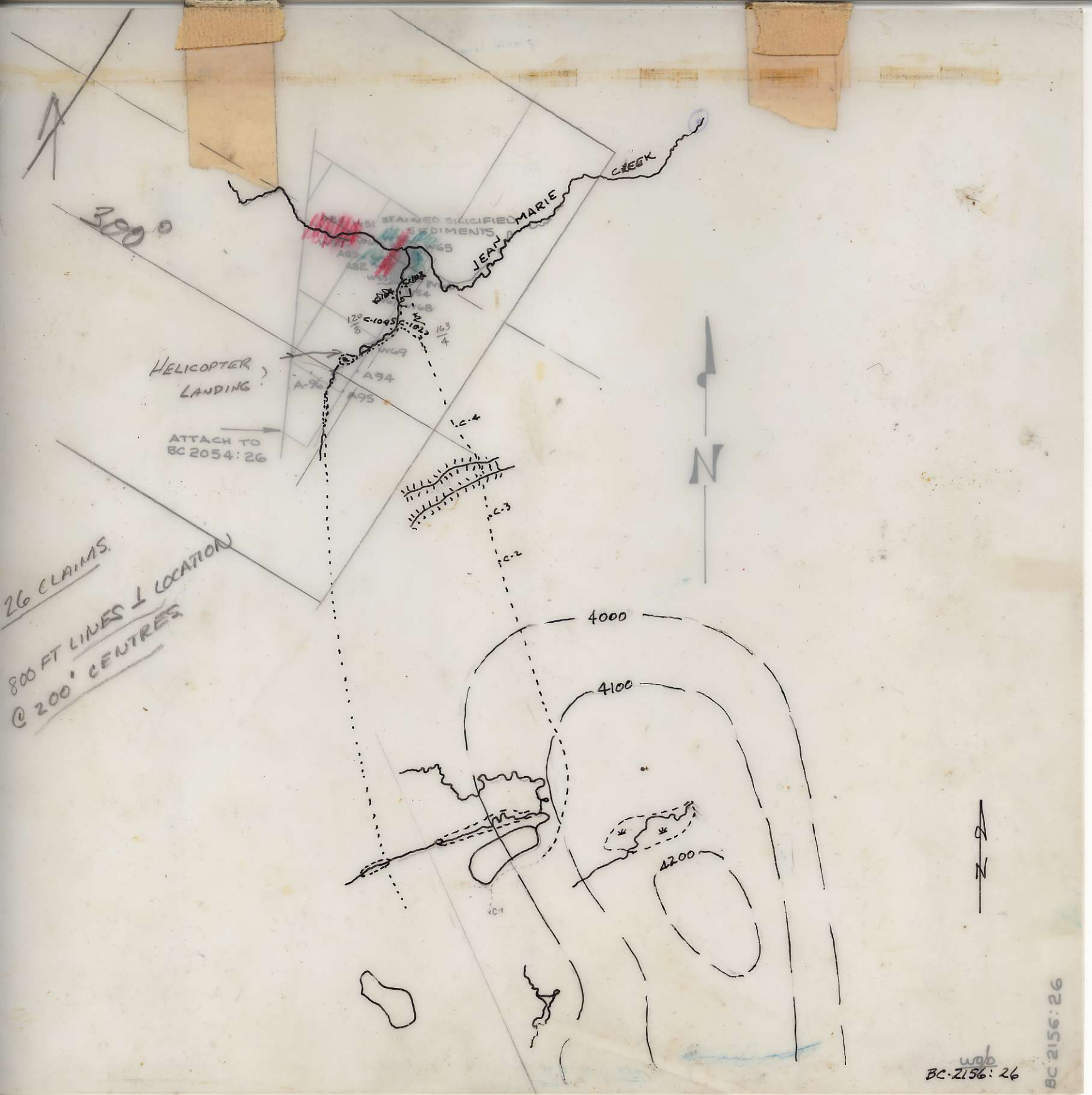
July 5-15, 1970

all samples z



DVK

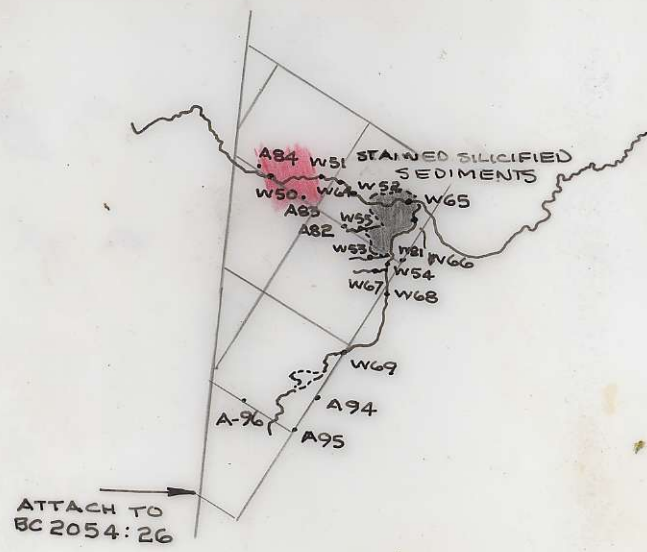
OC 2156: 26



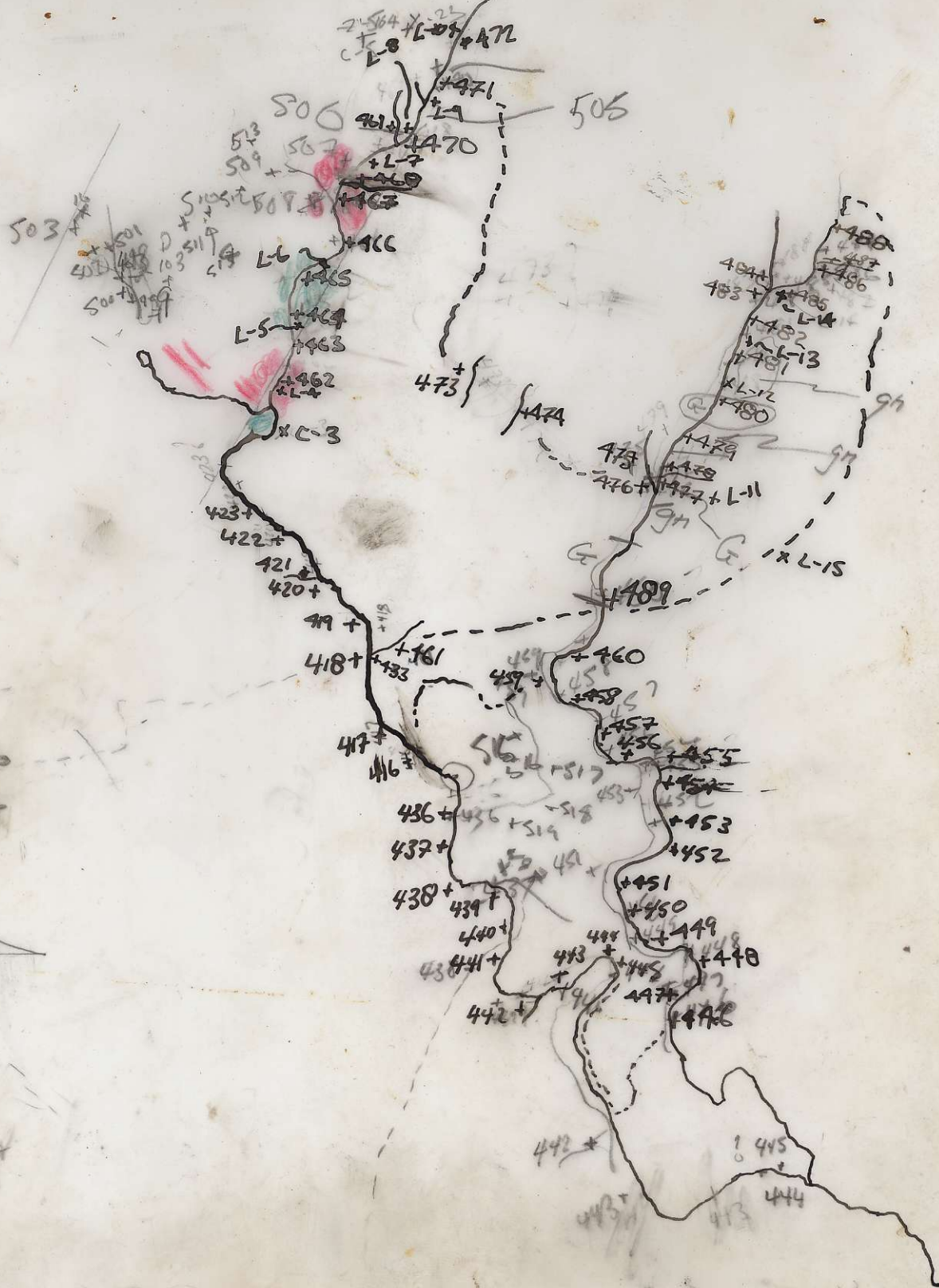
26 CLAIMS
800 FT LINES @ 200' CENTRES

wob
BC-2156:26

BC 2156:26



WGB



D 51
+491
+492
+493
+494
+495
+496
+497
+498
+499
+500

MC 2156-23



2156/26



GROUP SKETCH
 JEAN N^o 47 - 0722 INCLUSIVE
 ADJOINS EXISTING JEAN 1-46
 SCALE 1" = 2640' (APPROX)

SEP 1969
 AWG

wgb

BC 2156:27

x CAMP ALPHA

JEAN MARIE - DELTA CAMP #3

JUNE 25 - JULY 5/70

SILT SAMPLES (Z) - D. LEFEBURE

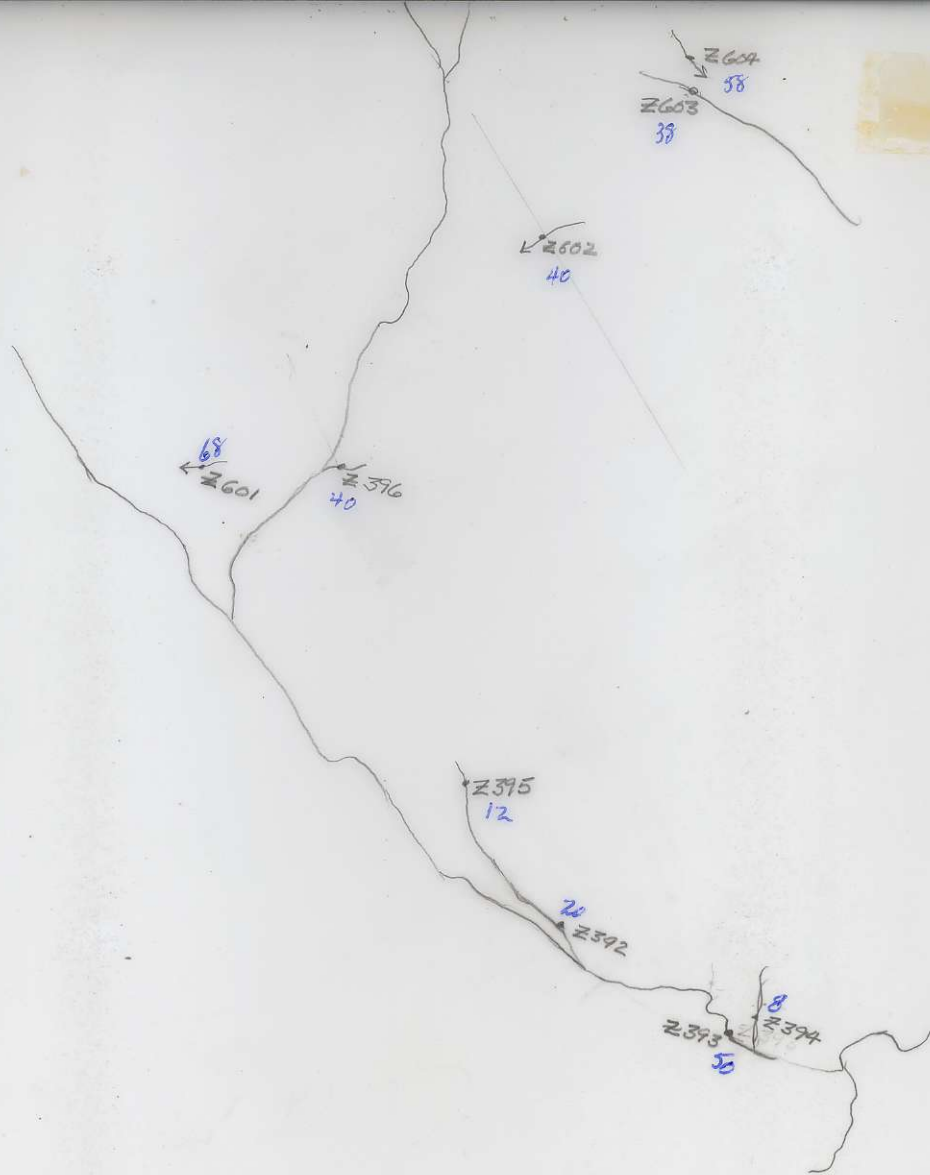


x CAMP BRAVO

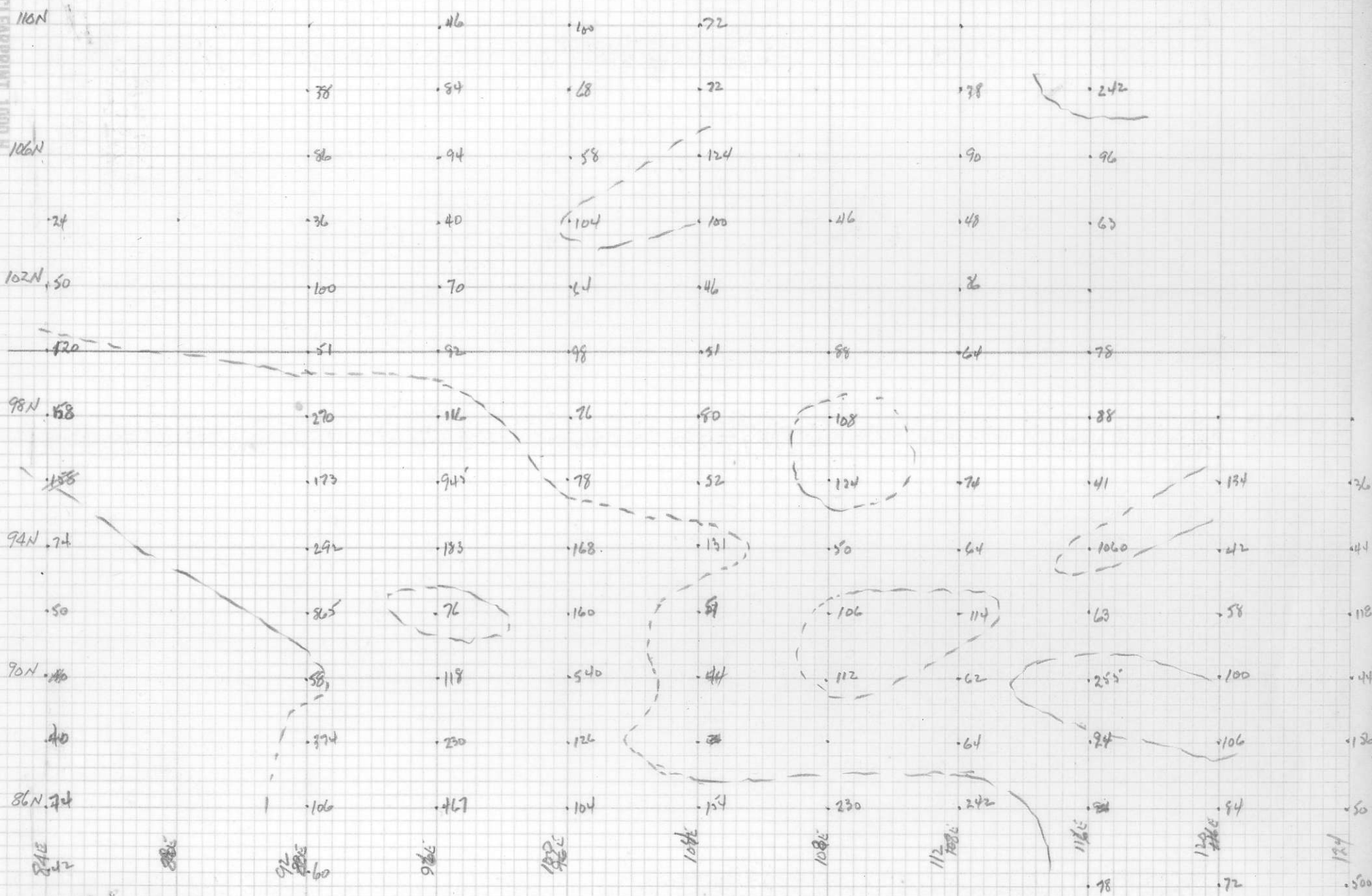


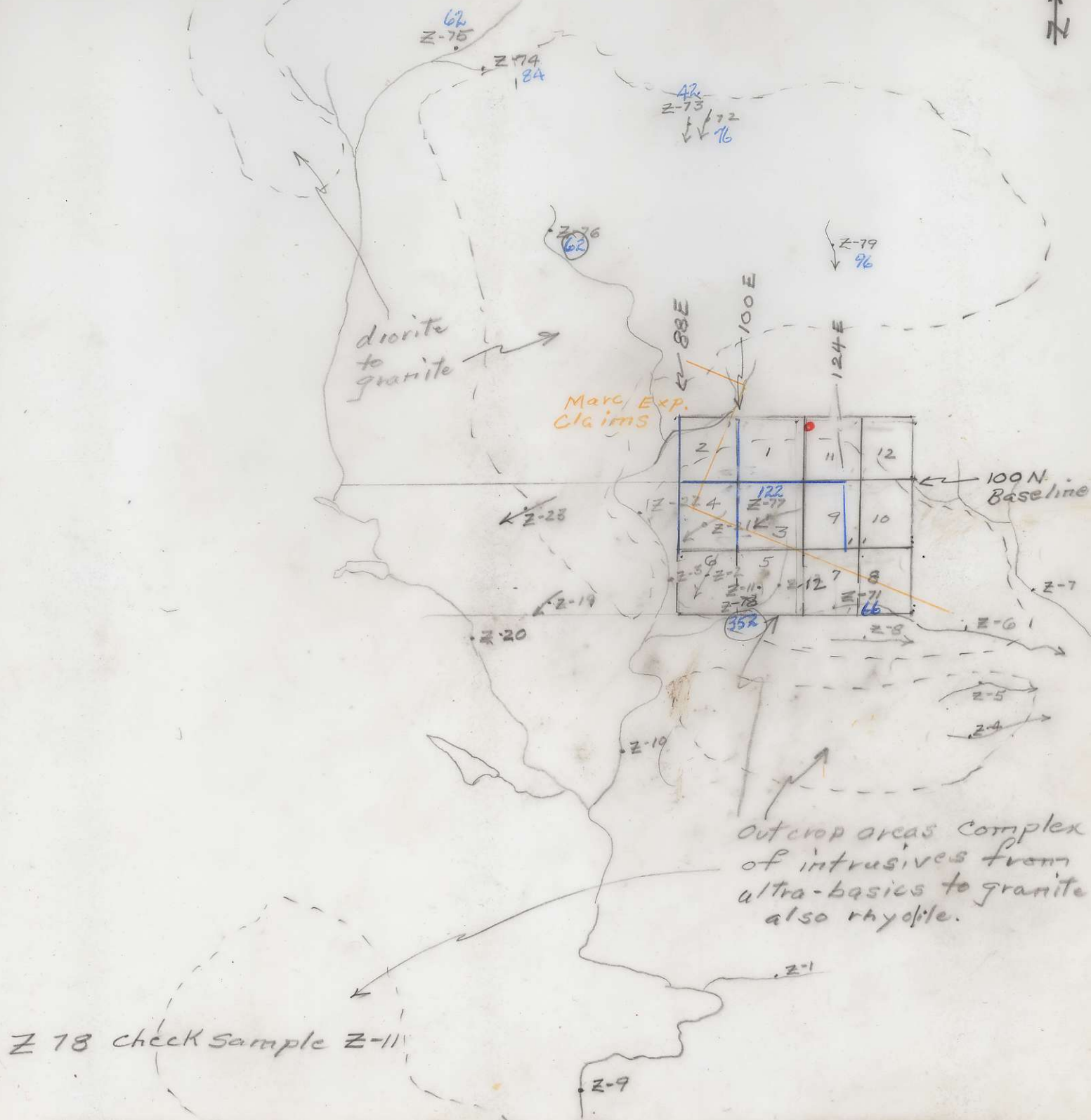
BC 2054-26

S
N



55
PC 2034/42







TCHENTLO LAKE

interfingering
hornfels and
argillites
fractid with Pyrite
Pebble conglomerate
Palesman diorite
arg. Pyrite

Z-305
Z-306
Z-307
Z-308
54

horn.
& Pyrite

Z-334
32

[And?
or
grey.]
Z-325
Z-324

Argit greywacke

Z-326

Z-327

greywacke

Z-323

Z-322

greywacke +
Conglomerate

Arg. greywacke
+ Conglomerate

intrusive?

