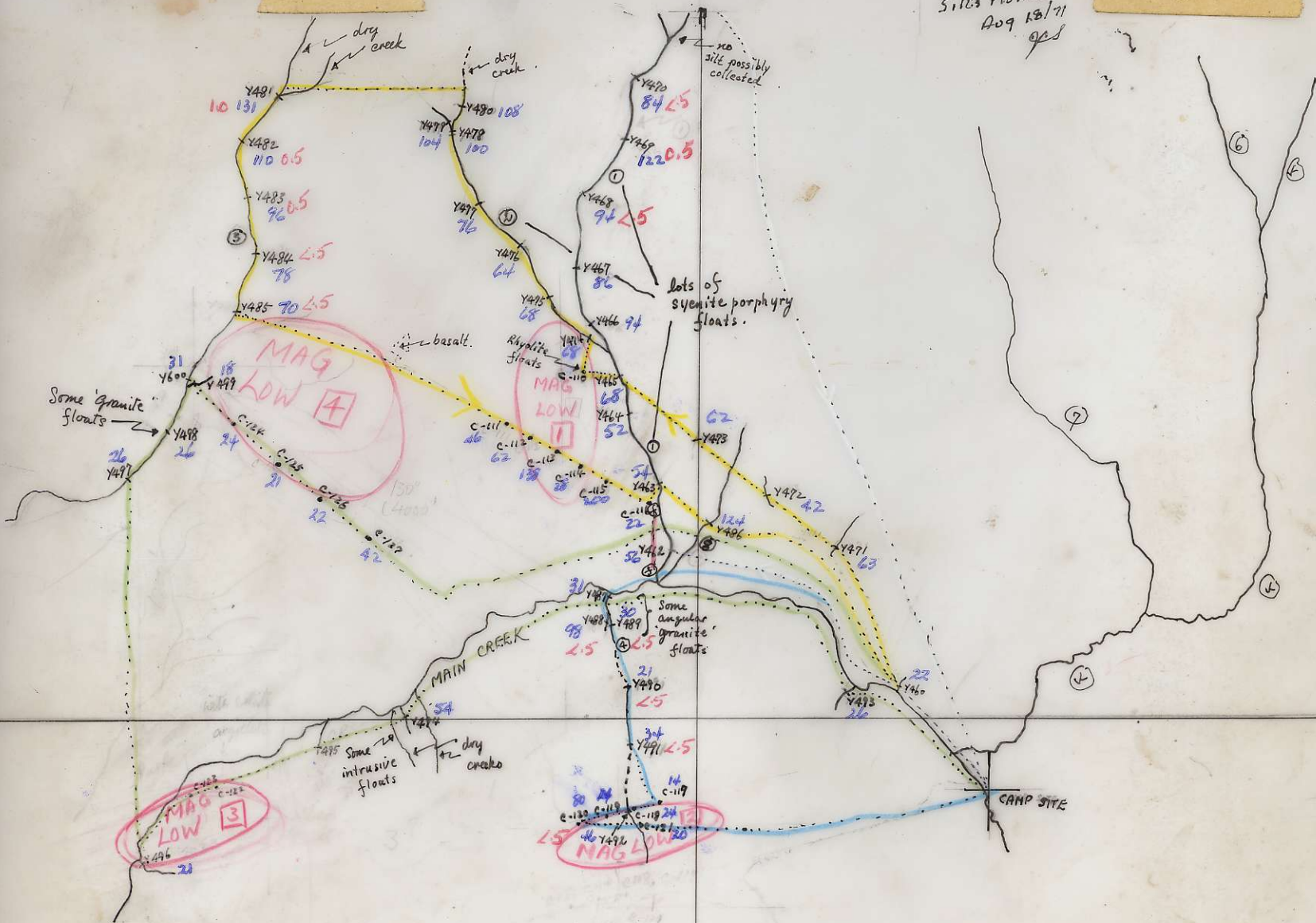


Silica Plotted
Aug 13/71
DAG
gcs



Louis traversing
29th July
31st July
1st August
2nd August.

⊕ ⊗ fault.

LUC SYNDICATE
"CAMP CACTUS"
Scale 1/2" = 1 mile.
NE of TAKLA LAKE
LANDING.

674098



LUC SYNDICATE

Scale: $\frac{1}{2}$ " to 1 mile.

N.E. of Table Landing

"Camp Cactus"

GEOLOGY MAP

- purple vol. rx. (crypto-crystalline)
- greenish to dark vol rx (micro-crystalline)
- purple-green vol. ~~rx~~ (porphyritic)
- basalt.
- argillite
- reddish sandstone
- purple-green arkose and conglomerate.


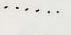

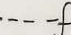
BC 1582.55

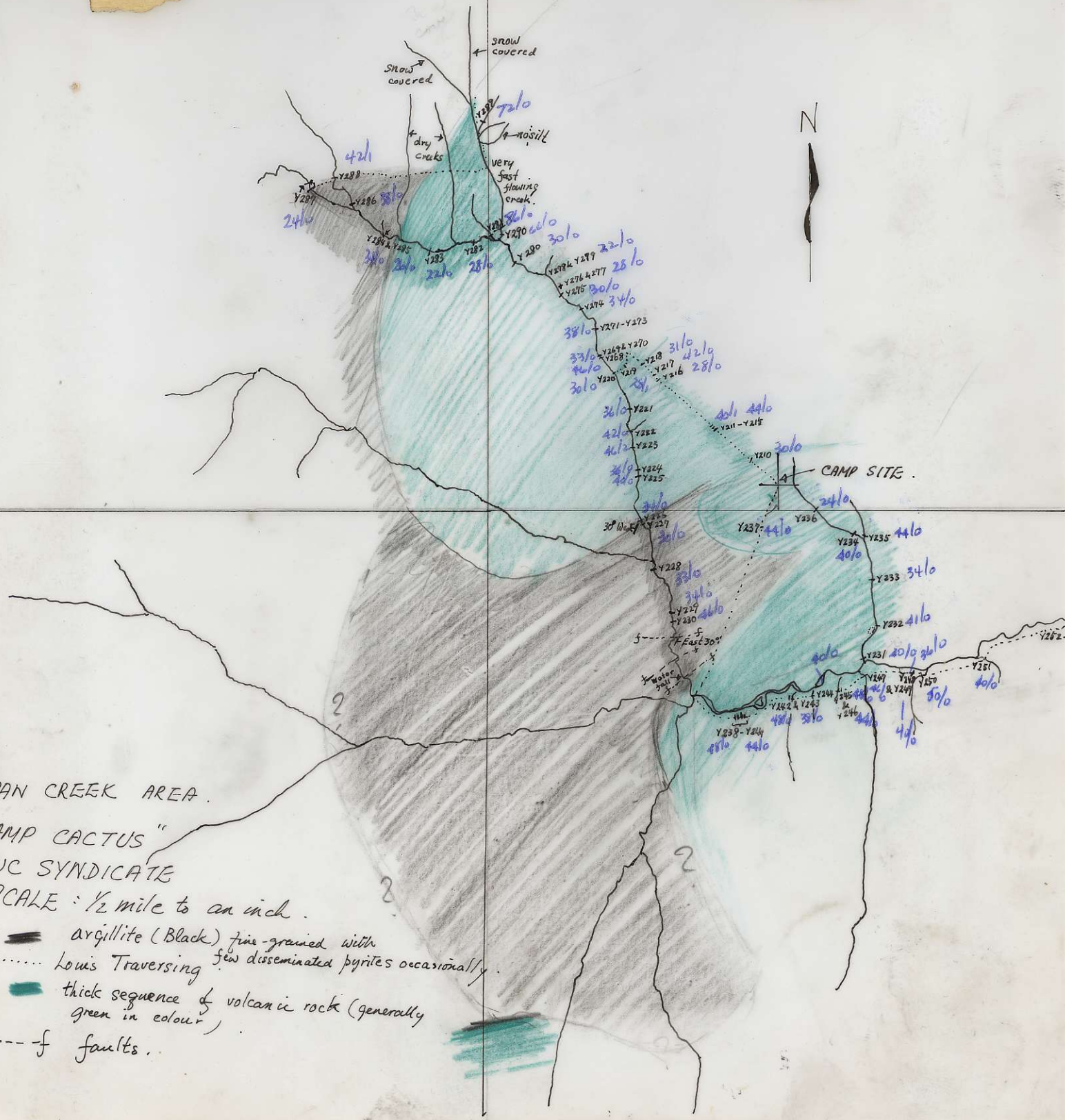
FRYPAN CREEK AREA.

"CAMP CACTUS"

LUC SYNDICATE

SCALE: 1/2 mile to an inch.

-  argillite (Black) fine-grained with few disseminated pyrites occasionally.
-  Louis Traversing
-  thick sequence of volcanic rock (generally green in colour)
-  faults.





LUC SYNDICATE
 "CAMP CACTUS"
 Scale 1/2 to 1 mile
 Ankwill Creek areas.

- Traverse of J.P.S. July 22/71
- Traverse of J.P.S. July 23/71
- Traverse of J.P.S. July 24/71
- green volcanic
- argillite
- Traverse J.P.S. & L. Tsang July 26, 1971
- Traverse J.P.S. & L. Tsang July 27, 1971

see also
 photo BC.1582.70

BC 1582:52

Crossed
S103-112

LWC SYNDICATE
"CAMP CACTUS"
Scale 1/2 to 1 mile
Ankwil Creek areas

- Louis Traverse 21 July 1971
- " " 22 "
- " " 23 "
- Louis Traverse July 24, 1971

Traverse J.P.S.
July 21, 1971

- || felsite dike
- argillite
- green volcanics
- blue-grey volcanics

Rusty sandstone

- bluish volcanic rx with spines of pyrites.
- sheared rx.



S-104 & S-105
if not clear see
overlay BC 1582-54.

7/66 074

Dust-Sinta Area

Target #4

June 23-30, 71

Scale 1" \approx 1/2 mile

Camp "Cactus"

Travellings

24th June 71
25th "
29th "
30th "

Symbols used:

- ▬ cliff
- soil sample site
- silt sample site
- greenish andesite
- greenish diorite
- light brownish "rhyolite"
- Granite outcrop
- ▭ Granite possible area covered by Granite
- ✓ possible volcanic rock



BC 1582:6

