

BC 1582:3

N

CAMP
SITE

Symbols used:

- - - cliffs with outcrops.
- 4th July 1971. Traverse
- white felsite (white in colour)
- teal andesite with basaltic dykes running across the rock body.
- swampy areas.
- possible area covered by the rock type.

Luc Syndicate,
Date of traverse : 4th July 1971.
Scale : 1" : $\frac{1}{2}$ mile .

674089

Luc Syndicate.

DUST - SINTA AREA

TARGET #4 & ENVIRONS.

Geology, Geochem. sampling, Magnetometer

Work by: Harivel, Tsang, Douglas, M'Neelan,

JUNE 5-11, 1971.

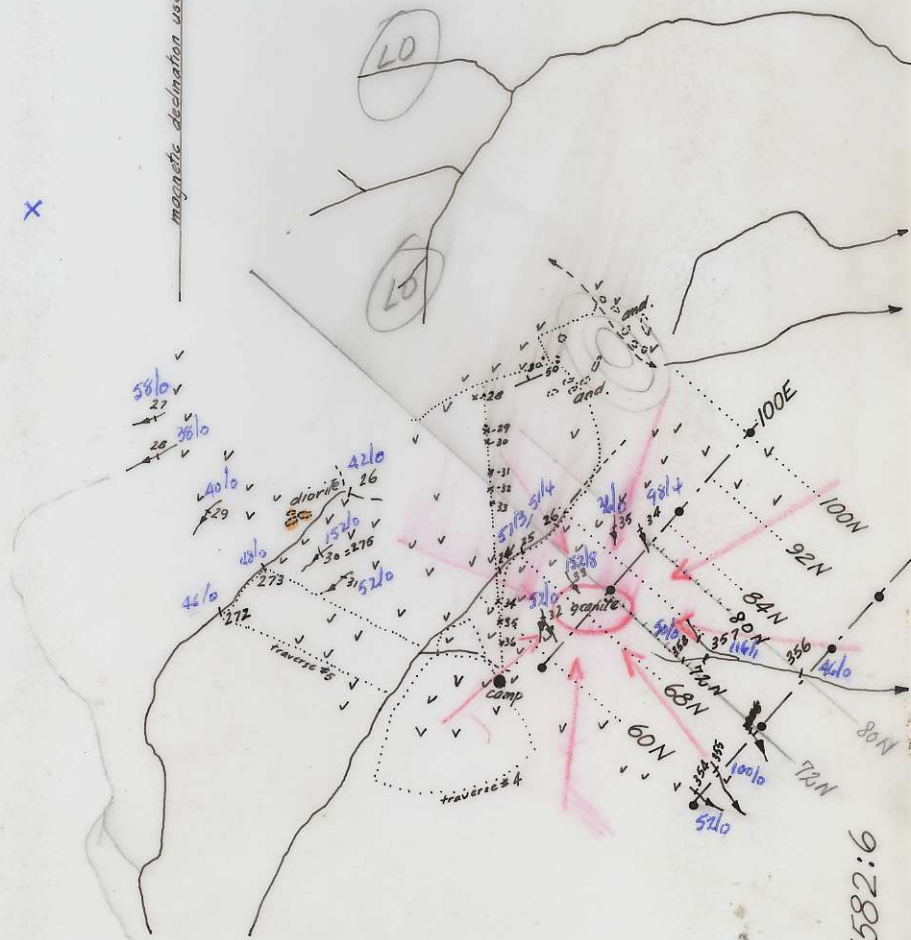
Scale: 1" \approx 1/2 mile

- and. : andesite, diorite outcrops (magnetic)
- diorite
- ∇ : volcanic outcrop area (undifferentiated)
- Y : stream sediment sample; no., location
- : soil sample & magnetometer traverse (see accompanying notes)

X

TRUE

magnetic declination used: 27° E



BC 1582:6