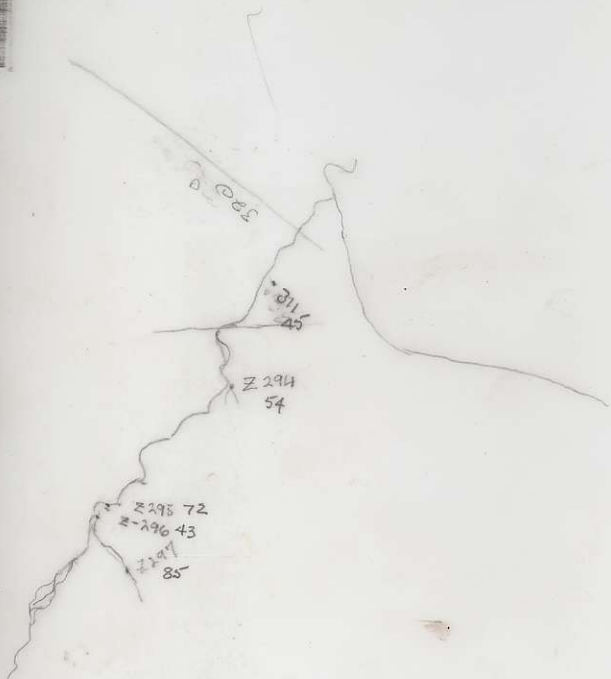
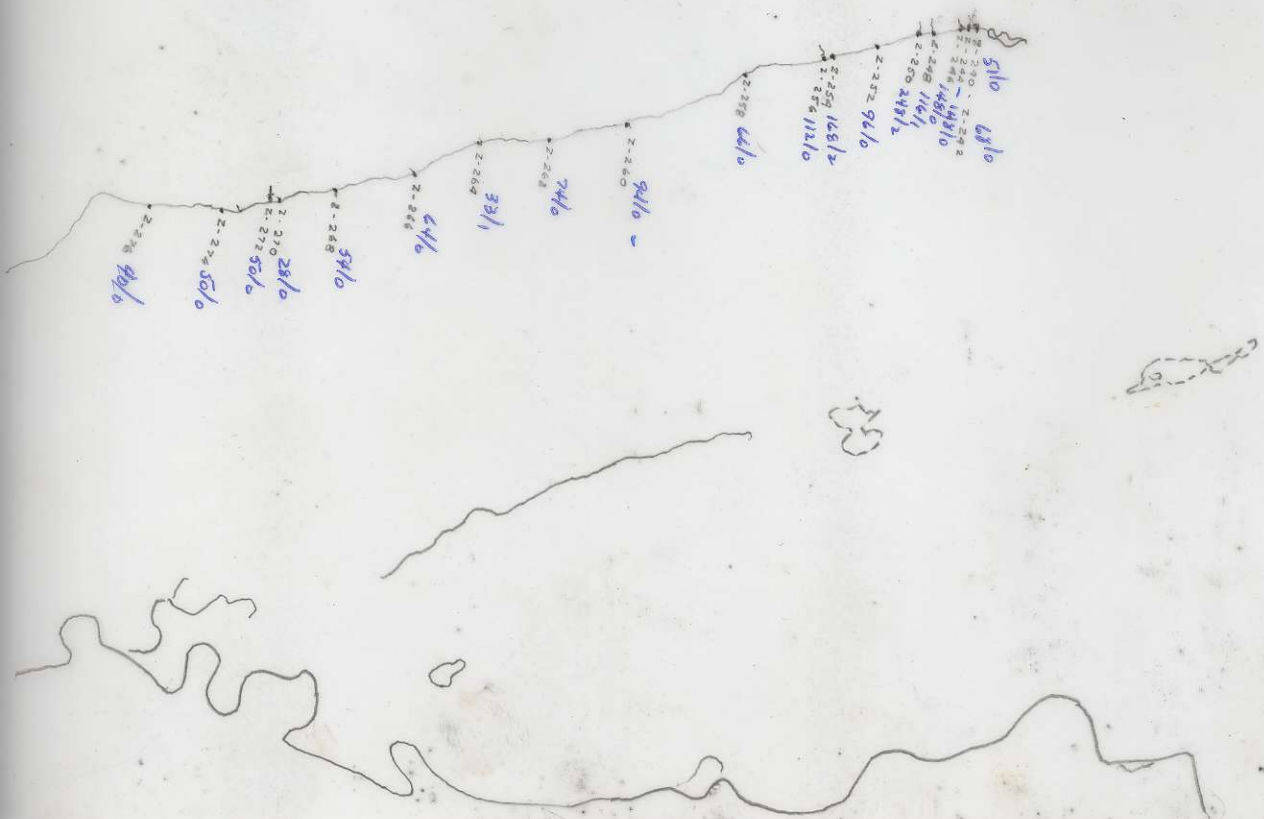


patches of snow.
 very low grade chalcophyllite throughout
 system, locally by cuprite, etc.
 spec. 30-6-4 o/c. hillside.
 spec. 30-6-(2+B) Talus
 D-33

snow
 patches of
 chalcophyllite
 mostly of iron
 to Cu
 borax

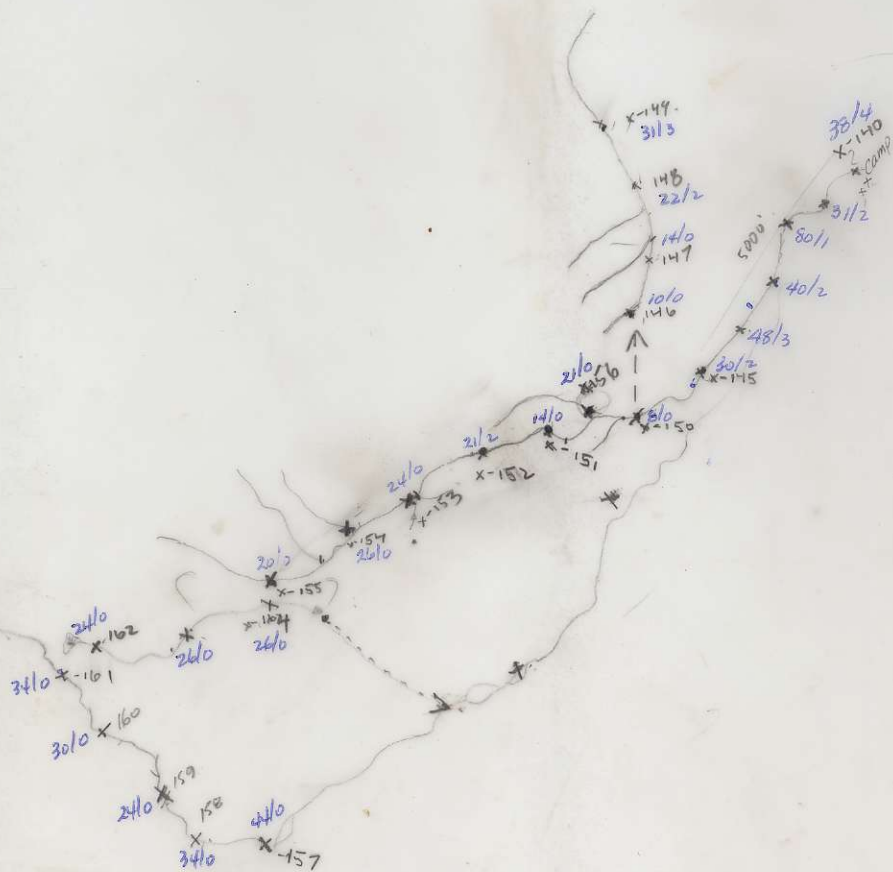
BC 2060-5





Plotted July 23/71

BC2187-69



BRAND CAMP
ON
HANA CREEK
JULY 1971

BC 2074:85