

CAMP AQUARIUS : AREA #1

674079  
1971

1A GRANITE

1B LINEATED, FOLIATED GRANODIORITE WITH SOMETIMES BASIC ~~INCLUSIONS~~ INCLUSIONS ;  
TO HYBRID GRANODIORITE

1C ~~GRANITE~~ PORPHYRY WITH FELDSPAR PHENOCRYSTS IN MAINLY MAFIC MATRIX

1

2

BASIC INTRUSIVE; AMPHIBOLITE

3

BRECCIATED SEDIMENTS AND VOLCANICS FOUND ALONG FAULT ZONE (PINCHI)

4

SEDIMENT; CALCAREOUS ARGILLITE  
(META?)

(mag, gneissic) T521, 22<sup>+</sup>  
prob. meta gneiss

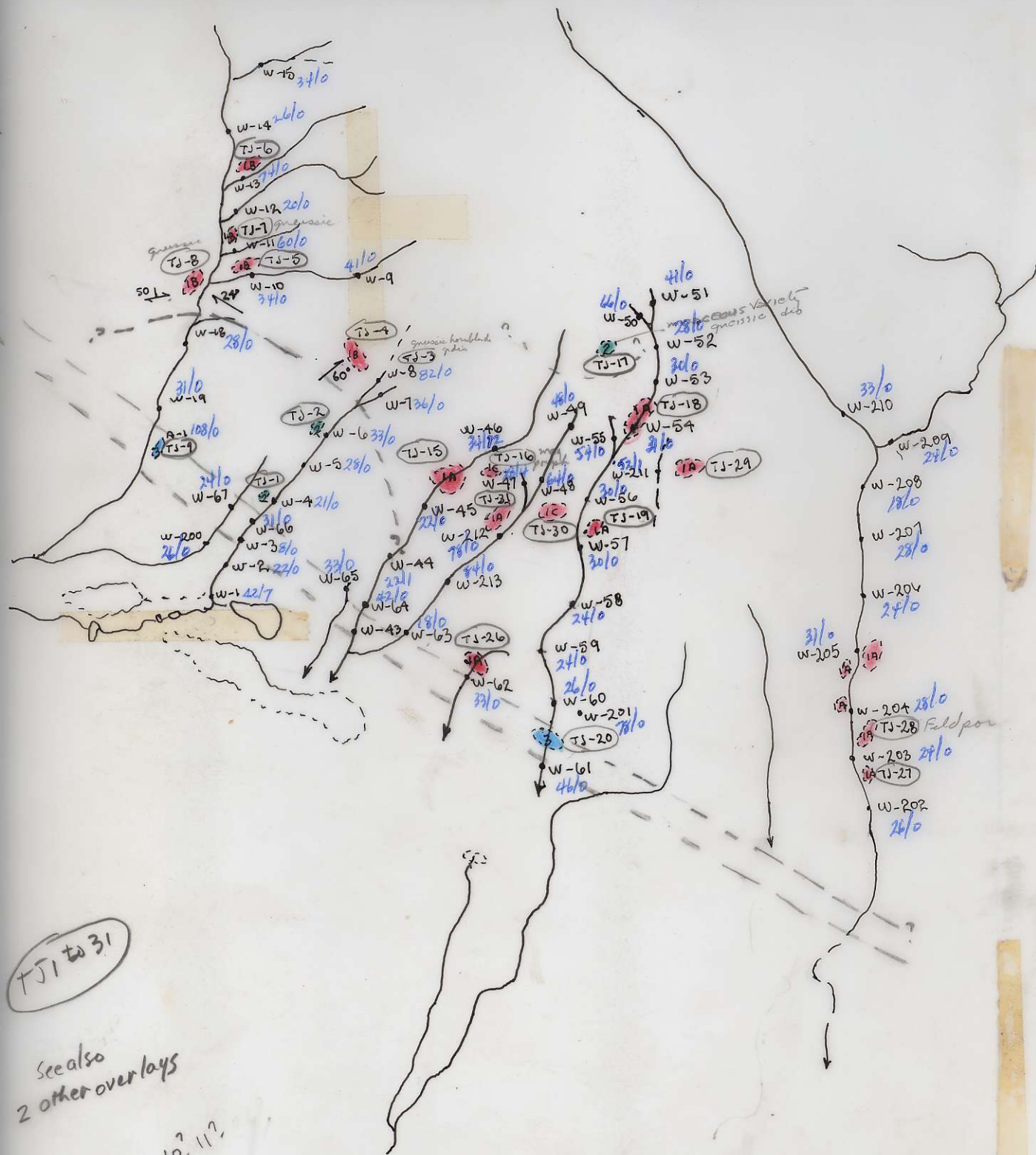
5

MINOR INTRUSION - FELDSPAR PORPHYRY DIKE OR SILL OR --  
? ?

Rock samples.

TJ-1

- 3
- 7
- 8
- 9
- 11
- 13
- 14
- 16
- 17
- 20
- 21
- 22
- 23
- 24
- 25
- 28

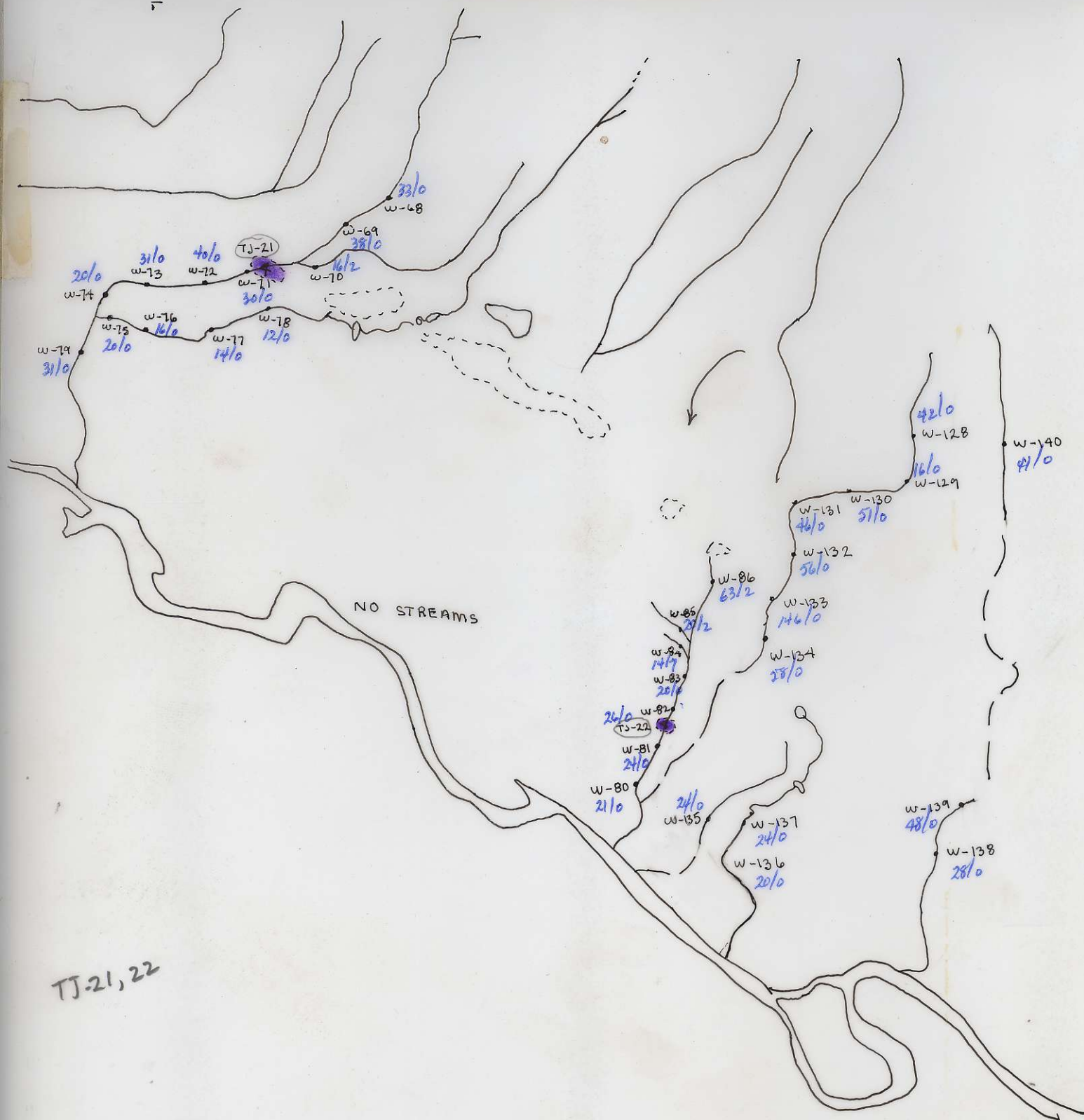


TJ1 to 31

See also  
2 other overlays

TJ- 10, 11?





TJ-21, 22

TJ-12, 13, 14  
TJ-23, 24, 25

