

Z-125 98/0
Z-124 44/0
Z-123 98/0

112/0
Z-122
154/0
Z-121
134/0
Z-119
Z-118
52/0
162/0

178/0
Z-117
126/0
178/0
128/0

underground
stream
Z-113
183/0
Z-112
173/0

300/0
Z-111

236/0
Z-108
48/0
Z-109
144/0

Z-35 54/0
Z-34 52/0
92/0
Z-33

Z-32
168/0
Z-31
54/0

Z-30
34/0
Z-29
44/0

Z-28
136/0
Z-27
160/0

Z-26
51/0
Z-25
144/0

Z-24
120/0
Z-23
120/0

Z-22
126/0

Z-21
292/0
Z-20
152/0

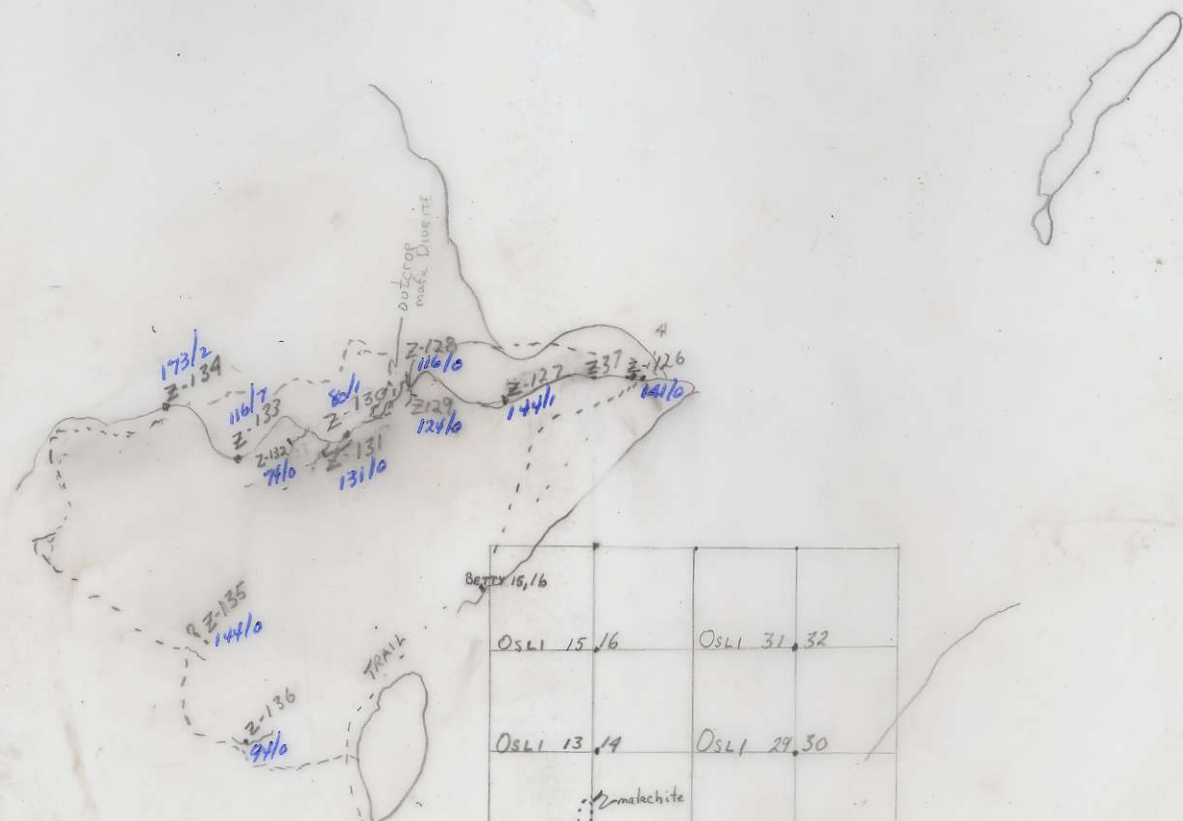
Z-42

Z-36
24/0

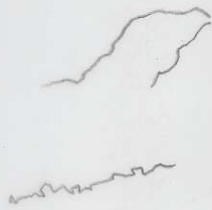
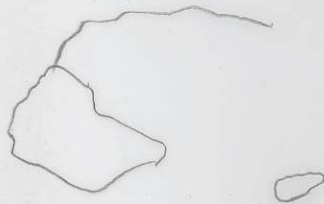
cu

674070
Prospectors
Notes-1971

BC 2074/86



| | | | |
|-------------|--|------------|--|
| BERRY 15,16 | | | |
| OSLI 15,16 | | OSLI 31,32 | |
| OSLI 13,14 | | OSLI 29,30 | |
| malachite | | OSLI 27,28 | |
| OSLI 11,12 | | OSLI 25,26 | |
| OSLI 9,10 | | OSLI 23,24 | |
| OSLI 7,8 | | OSLI 21,22 | |
| OSLI 5,6 | | OSLI 19,20 | |
| OSLI 3,4 | | OSLI 17,18 | |
| OSLI 1,2 | | | |



+

$\frac{239}{2210}$

$\frac{7610}{238}$

$\frac{6310}{237}$

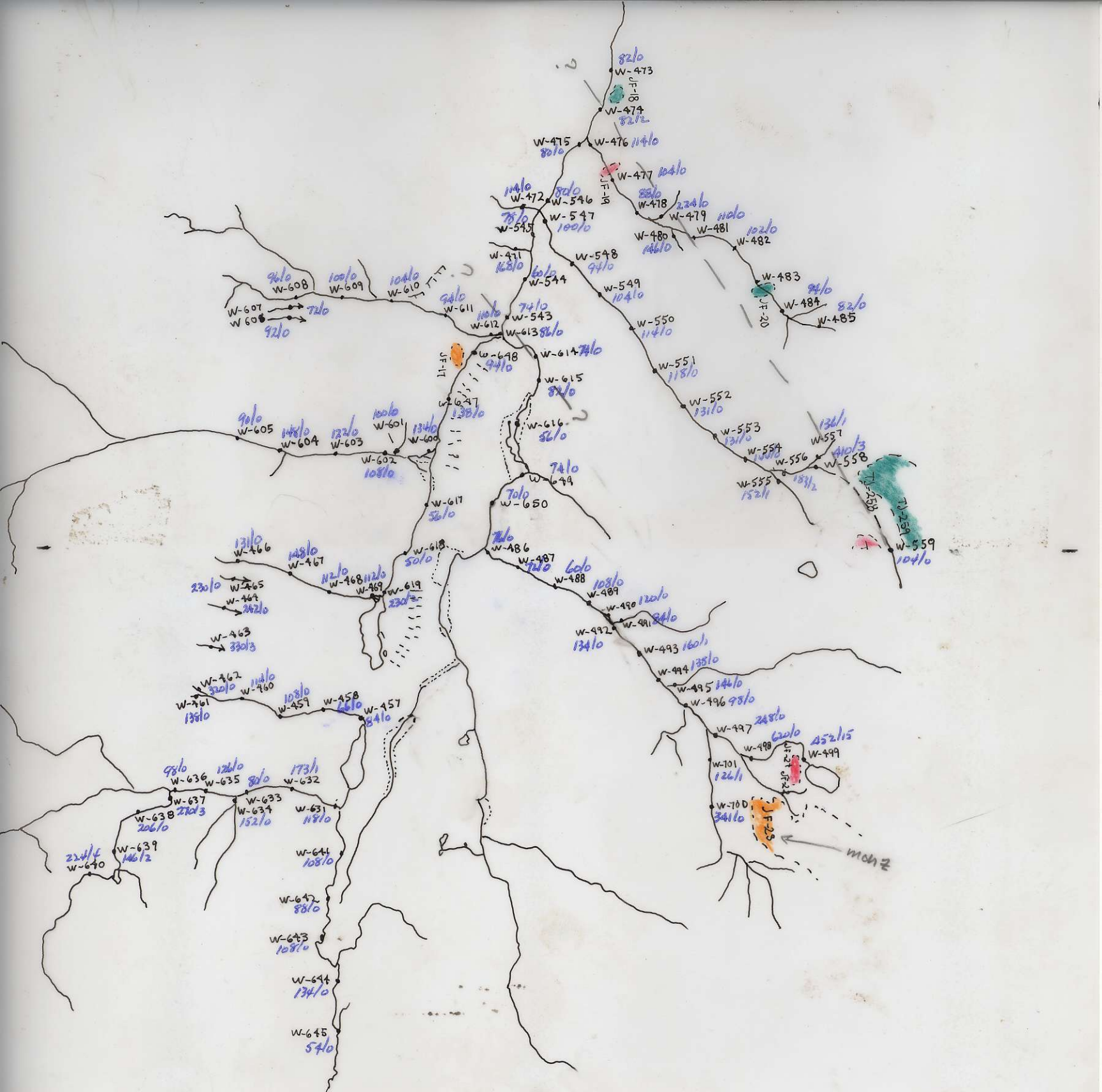


$\frac{2-13}{1410}$



BC 2074-87

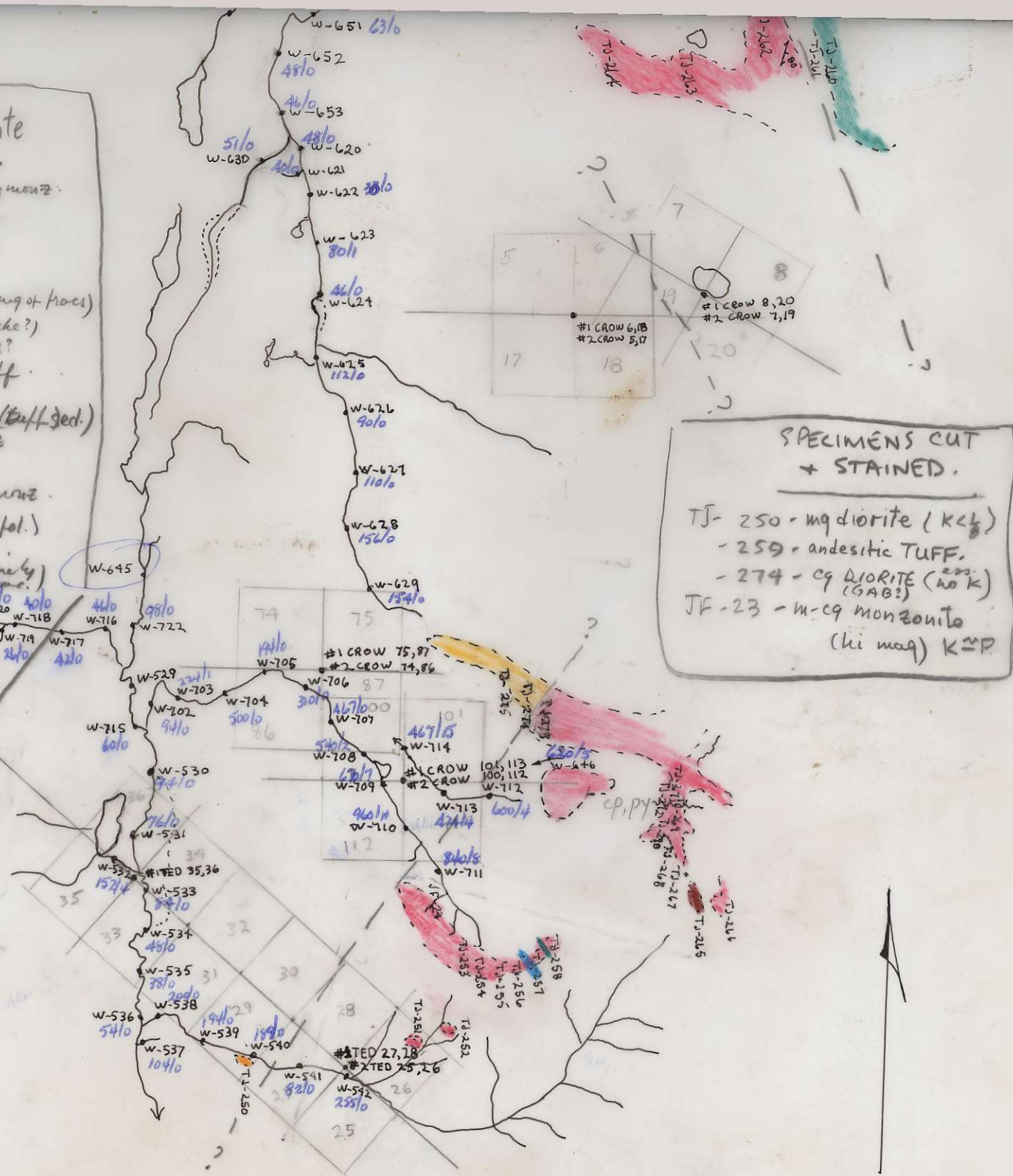




- TJ 250 - monz diorite
 251A - pk aplite like
 252(2) - syen cutting monz.
 9Tz-Cu
 253 - Kspath monz
 254 - mg grey (dior?)
 255 - monz
 256 - monz (K bleaching of trace)
 257 - pk mafic ply (dike?)
 258A - TAKLA andes?
 259 - u ?? ✓ Tuff.
 260 - u - pyrust
 261 - banded takla (tuff sed.)
 262 - Kspath. monz
 264 - biot monz.
 268 - melans. biot monz.
 Cu 270 - Kspath monz (fol.)
 271 - monz.
 272 - py. monz (fine gr.)
 274 - m-cg dior. 5810 4010

- JF-17 - cg dior.
 -18 - ? TAKLA ✓
 -19 - alt monz
 -21 - Kspath monz
 -23 - monz

all intrusives
 mod-st. magnetic



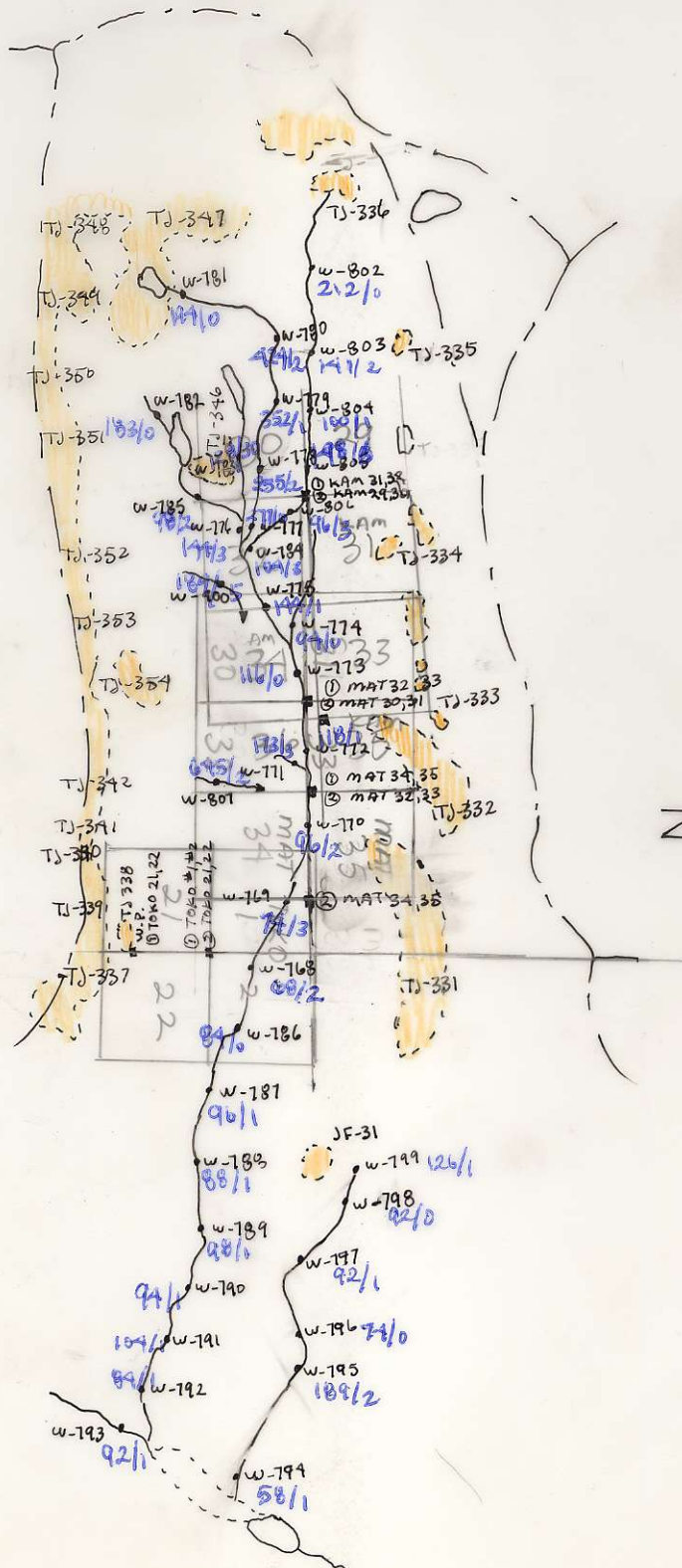
SPECIMENS CUT
 + STAINED.

- TJ- 250 - mg diorite (Kcl)
 - 259 - andesitic TUFF.
 - 274 - cg DIORITE (no K)
 (GAB?)
 JF-23 - m-cg monzonite
 (li mag) KMP

N

CAMP AQUARIUS

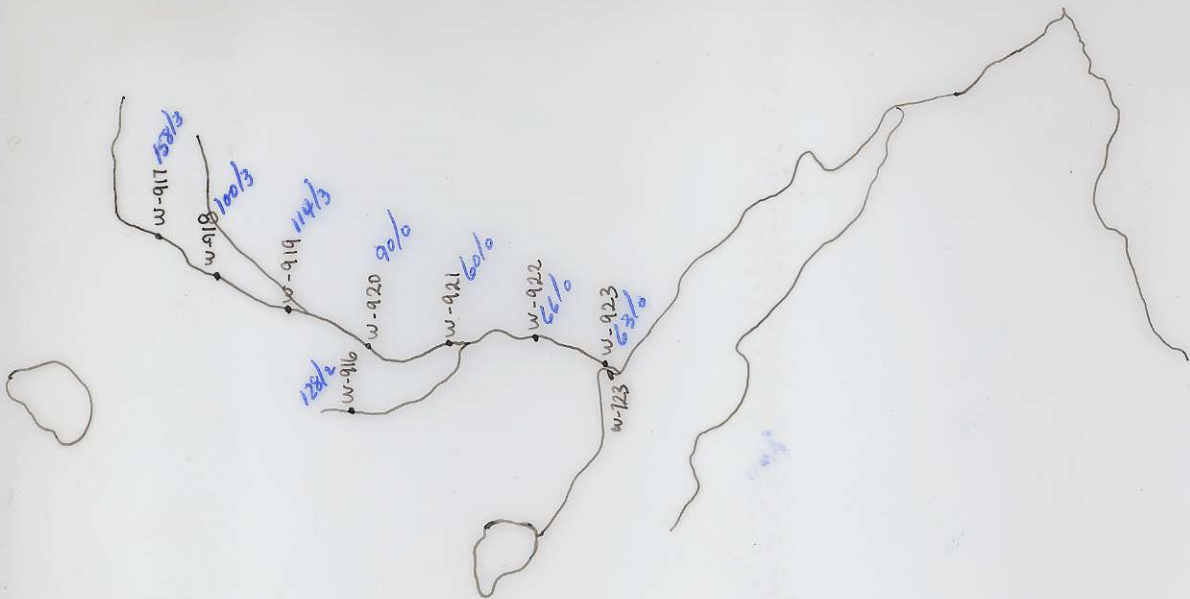
#1



Done Oct 7/71
 [Signature]

BC 2067:10

CAMP AQUARIUS:
HEADWATERS OF
MATELO CREEK



o o

Done Oct 7/71
JES

Stair

2067-78