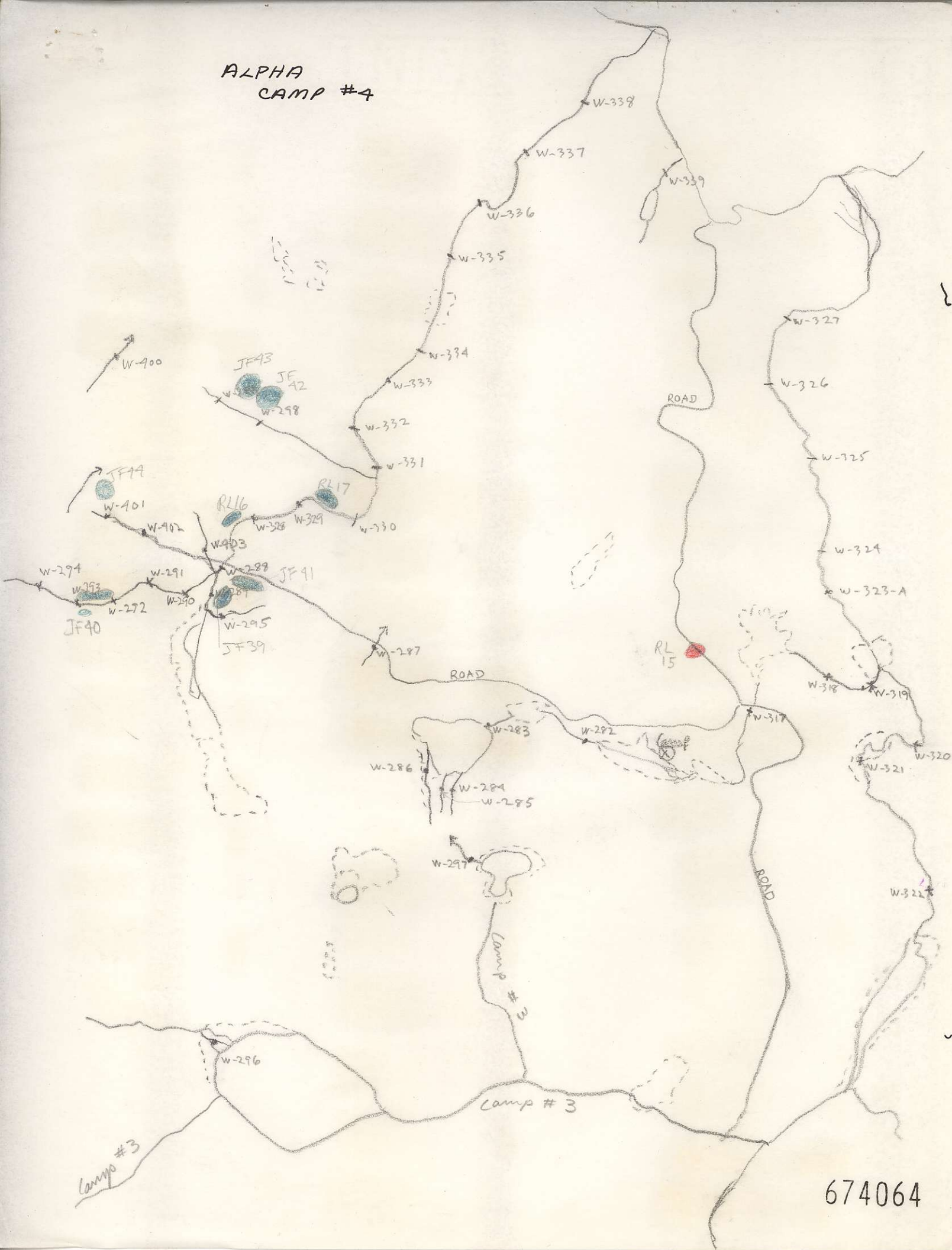


ALPHA  
CAMP #4







W-400 3  
 W-401 2  
 W-402 3  
 W-403 5  
 W-282 4  
 W-283 3  
 W-284 5  
 W-285 3  
 W-286 5  
 W-287 3  
 W-288 2  
 W-289 5

W-290 3  
 W-291 4  
 W-292 2  
 W-293 3  
 W-294 4  
 W-295 1  
 W-296 4  
 W-297 4  
 W-298 5  
 W-299 1  
 W-334 1  
 W-335 2  
 W-336 2  
 W-337 3  
 W-338 3  
 W-339 2

W-317 3  
 W-318 1  
 W-319 3  
 W-320 3  
 W-321 4  
 W-322 3  
 W-323 (A) 4  
 W-324 4  
 W-325 *Hand  
Hand!*  
 W-326 4  
 W-327 2  
 W-328 4  
 W-329 3  
 W-330 3  
 W-331 3  
 W-332 3  
 W-333 4  
 W-334 3

When do I get to see Bell Copper + # Granby?

Camp #4.

June 22/72 Alpha (the  
stinking corpse of  
Aquarius)

Terry.

Some camps just aren't so good. You have some hot ones + you have some bad ones. You see the area covered by the silts is not so bad, but the gaps are appalling. I was going to take some soil samples if we moved on Sunday, but we didn't. Next camp I will be sure to fill in those silt-gaps (I spoke to Cam about it on Thurs. ~~too~~). Map: color by Joe Zanatta. The andesite was almost all the outcrop we found, except for the one granite (R5) (amphibolite - how do you spell it?) but of course there isn't enough outcrops to give a boundary between the two types.

I am finally learning something about geology. Could you possibly send me, if you already have them around, ~~some~~ some cut samples of each of a:

granite  
granodiorite  
Dyenite  
Monzonite  
{ Diorite }  
{ Andesite }

If you don't want them, I'll hang on to them for awhile. If you don't have them, send all and one or two. I'm all eyes + ears.

P.S. → Xover)

The "A" group has its northernmost claim  
line approx 1000' north of The lake <sup>near</sup>  
in the lower middle of TBC 1592:18 (W-296) ~~3~~  
~~George~~ I didn't bother (you said ignore) to  
find his post(s), but it was definitely has  
line (some flagging + numbering system.) Thought  
you might like some idea of its northern  
extension, in case some silt's I kick!

P.P.S. Any silt results worth hearing about?  
(including that property I helped (mis) stake  
with Jim R + Tom B. (what was it called) I heard  
~~you~~ they ran some soils.

P.P.P.S. Ron would like to see The mines  
at Bell + Gumbry too, if it is still possible.

ALPHA - CAMP #4

TYPE #1

Course grained andesite + diorite

- subvolcanic unit

- feldspar phenocrysts, hornblende subhedral

JF-41

PL-17

JF-39

PL-16

JF-43

JF-42 - (bit of pyrite)

TYPE #2

Monzonite

- pink fine grained matrix - feldspar  
kinks, low mafics

PL-15

TYPE #3

Angellite

- banded, blank

JF-44

TYPE #4

GRANITE - Qtz Monzonite

- coarse grained Qtz, hornblende, orthoclase