

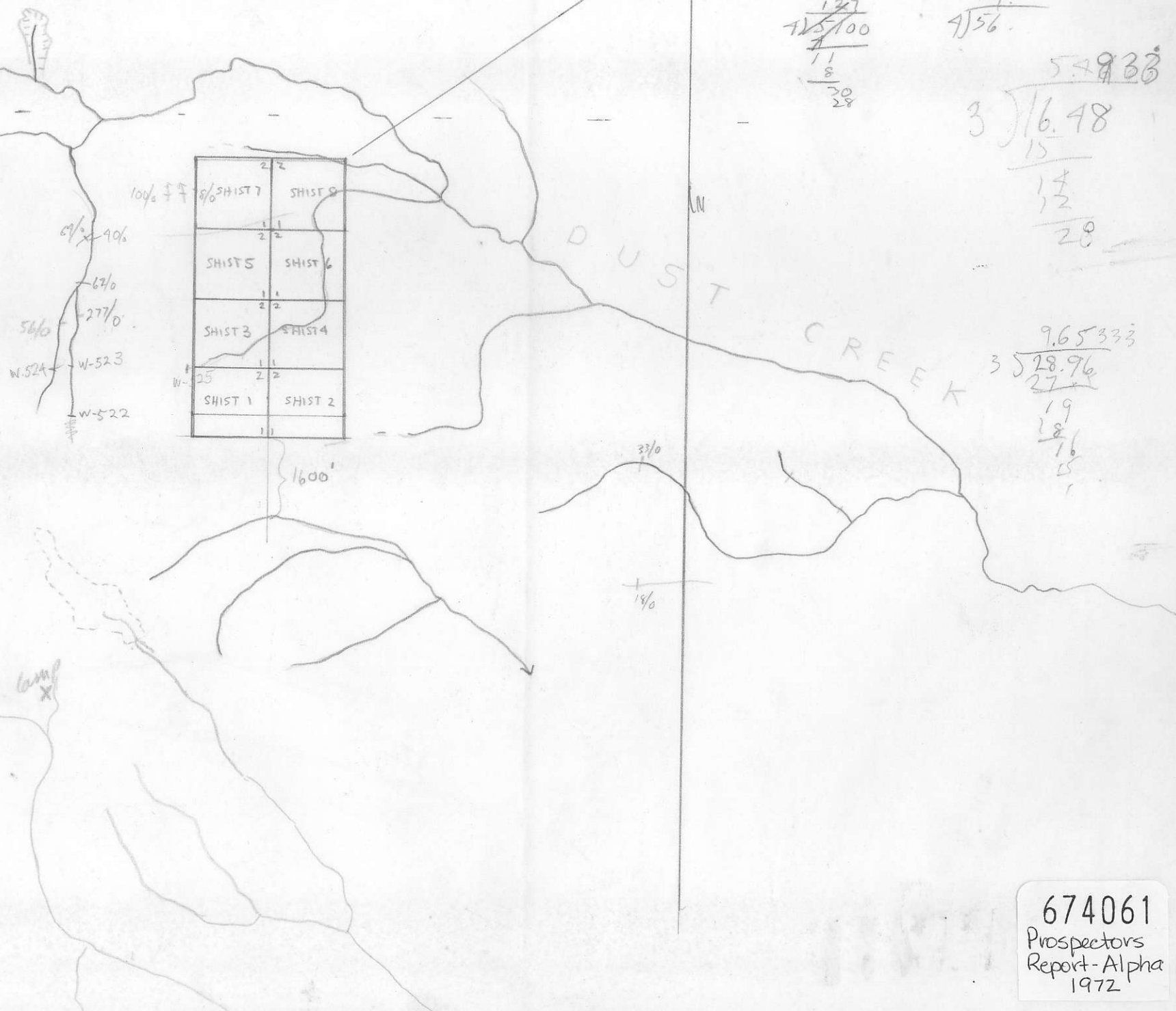
$$\begin{array}{r} 127 \\ 125 \overline{)100} \\ \underline{11} \\ 28 \end{array}$$

$$\begin{array}{r} 14 \\ 4 \overline{)56} \end{array}$$

$$\begin{array}{r} 54933 \\ 3 \overline{)1648} \\ \underline{15} \\ 14 \\ \underline{12} \\ 28 \end{array}$$

$$\begin{array}{r} 9.65333 \\ 3 \overline{)28.96} \\ \underline{27} \\ 19 \\ \underline{18} \\ 16 \\ \underline{15} \\ 1 \end{array}$$

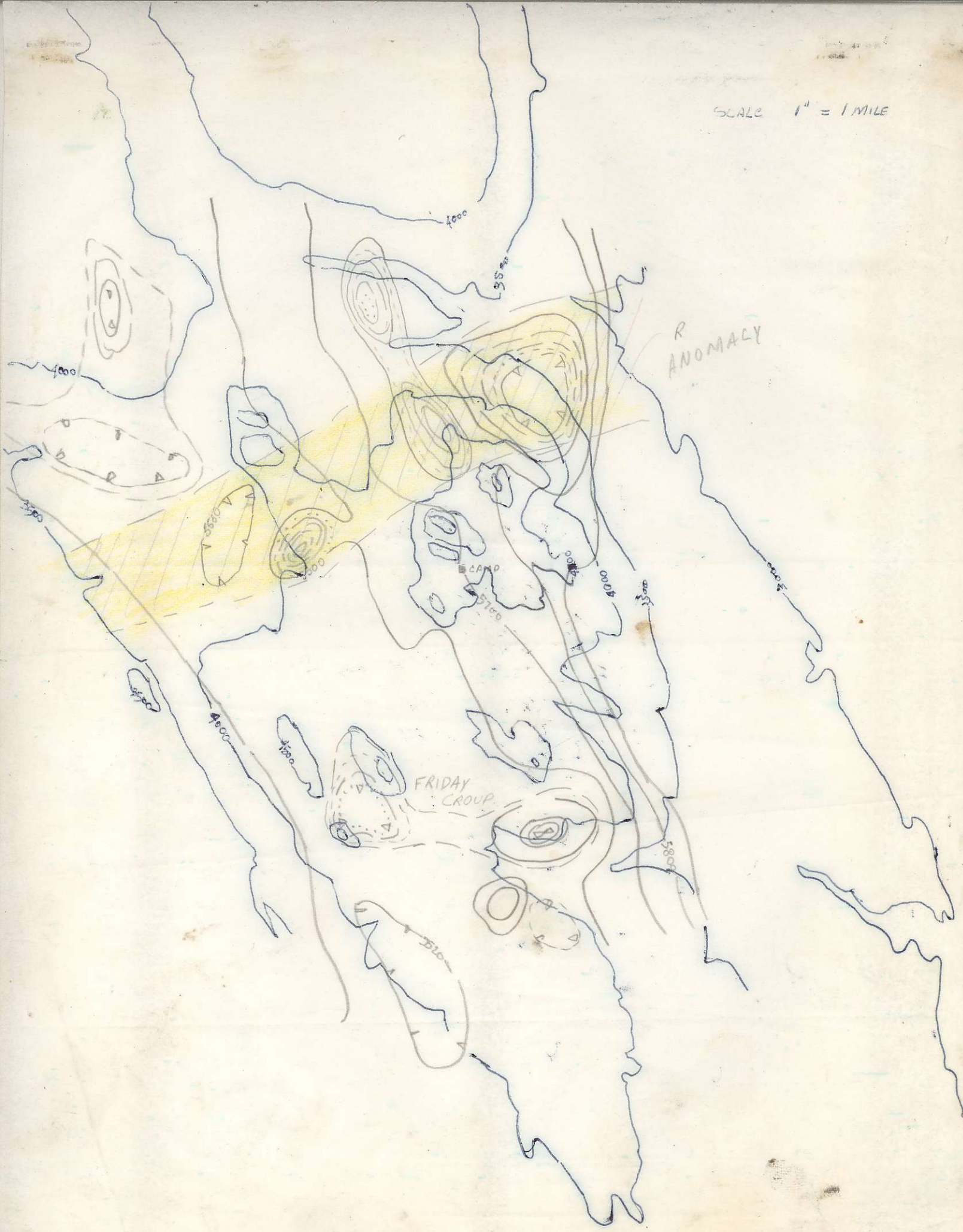
N



	2	2
100% ♀♀	8/0 SHIST 7	SHIST 8
67/0	1	1
277/0	2	2
56/0	SHIST 5	SHIST 6
W-524	1	1
W-523	2	2
W-522	SHIST 3	SHIST 4
	1	1
	2	2
	SHIST 1	SHIST 2
	1	1

674061
 Prospectors
 Report-Alpha
 1972

SCALE 1" = 1 MILE



COPY # 1
WORK # 31, 1

10000 7810
65 46

6200
2.5
2770
10

58.0
2.5

0.13

W602

W603

W605

W606
Koot outcrop

W608

609

W600

W601

W604

J220

CAMP

A491

A496

A412

A415

A414

A485

A476

A489

J219

J222

611

A477

A493

A491

A489

W614

613

A478

W479

A481

A492

A490

A488

A487

615

614

480

W482

W483

W484

W485

Picnite
J215

A486

J218

J217

J216

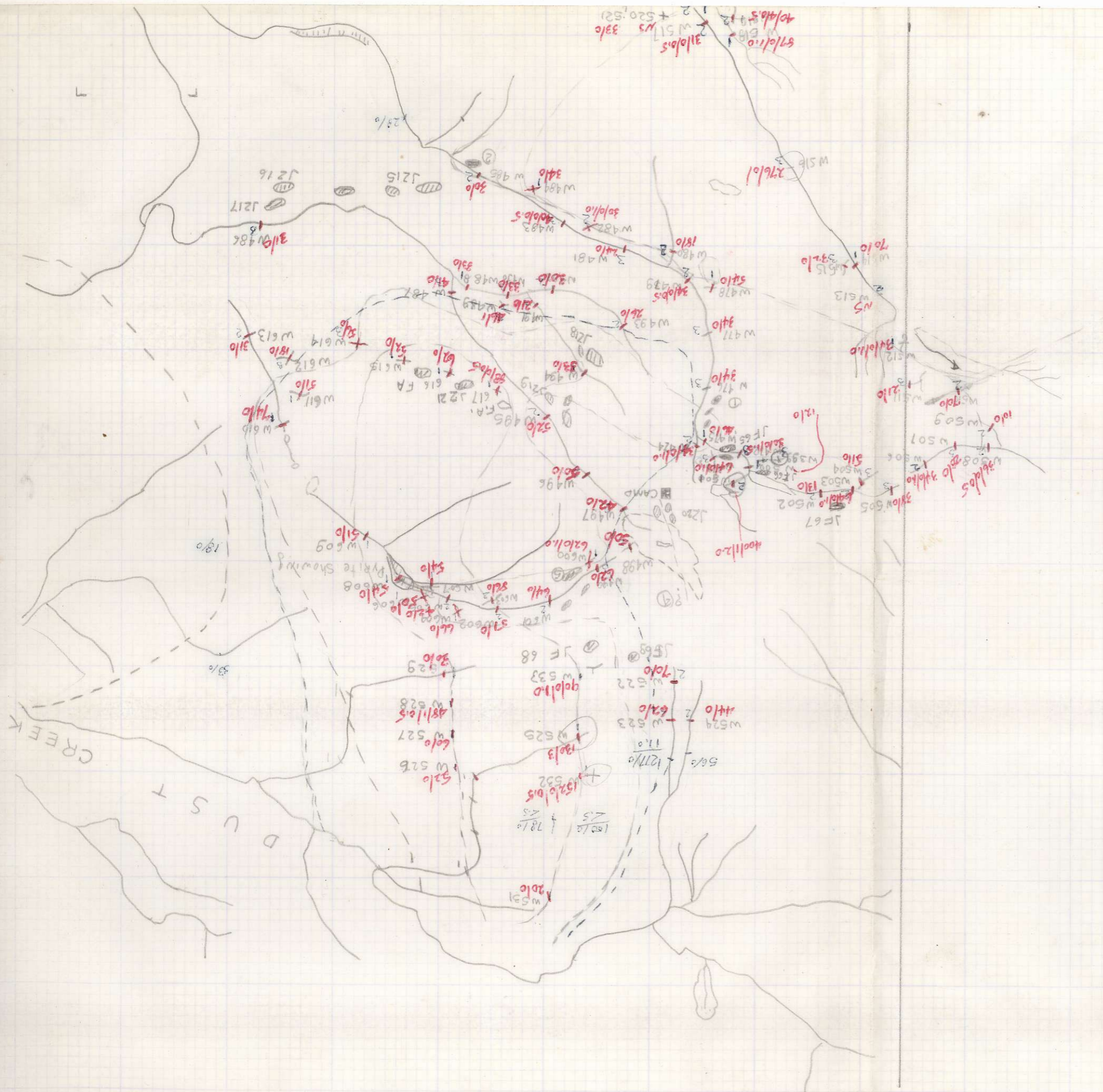
Lake

286

MAG
LOW

FRIDAY GROUP

FRIDAY
GROUP



CREEK

DUST

Pyrite Showing

CAMP

