

ZINC PROJECT
104 0/16

STEPHEN EXPLORATIONS LTD.

1458 Rupert Street, North Vancouver, British Columbia V7J 1G1

(604) 988-1545

673932

March 17, 1981

Mr. A.B. Mawer,
Cominco Ltd.
700 - 409 Granville Street,
Vancouver, B.C.
V6C 2R2

Dear Bruce,

During a joint venture program in 1977 we encountered a zinc anomaly in silt samples taken east of the Cassiar batholith in northern B.C. Since that time the joint venture has ceased operation in B.C. and we applied for, and received, a release from the terms of that venture for the area considered.

The anomaly shows values of 310 - 4000 ppm zinc, with an arithmetic average of 717 ppm, in several creeks over a distance of about four miles in a sequence designated by the G.S.C. as Middle and Upper Devonian sediments. Samples were run for copper, tungsten and, some of them, for lead. Twenty-four silts over 300 ppm zinc occur within the anomaly. The silts we have in the region outside the anomaly ran 40 to 265 ppm zinc. Our prospecting crew did not observe any mineralization.

We would like to discuss the possibility of turning over this information to you in return for an interest in any claims you might

stake as a result of investigation of the anomaly within a prescribed area of about 25 square miles.

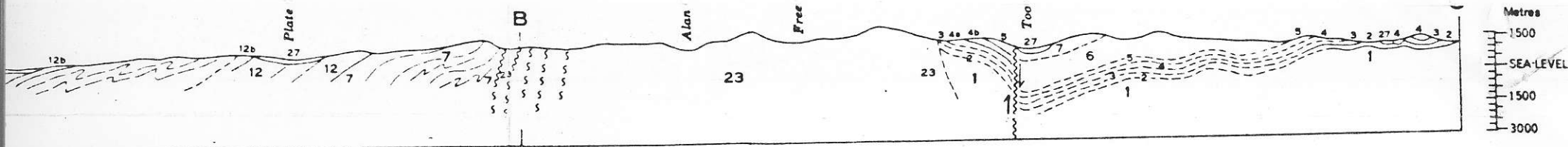
Yours very truly,

J.C. Stephen Explorations Ltd.

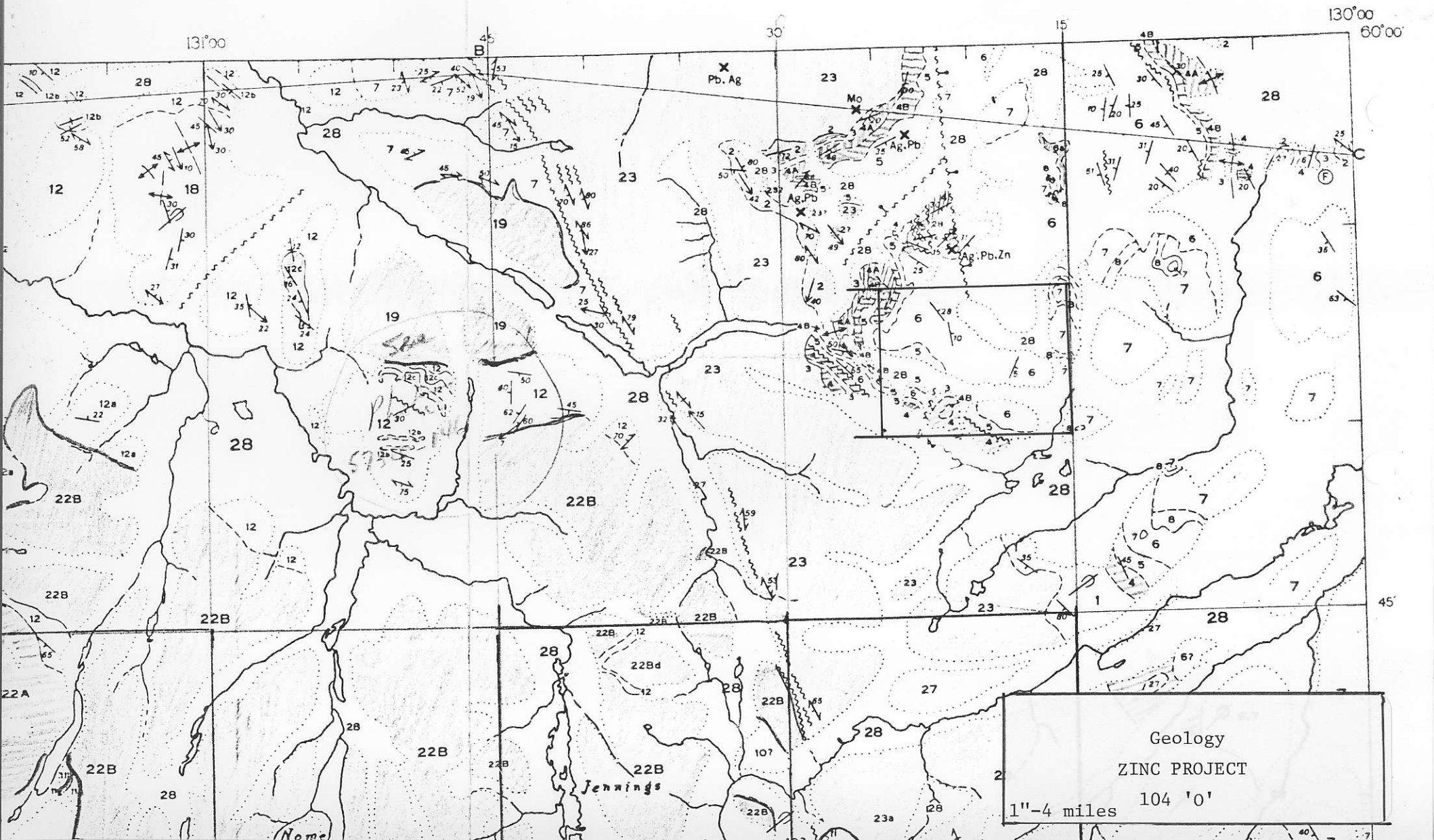
A handwritten signature in cursive script, appearing to read 'J.C. Stephen', written in dark ink.

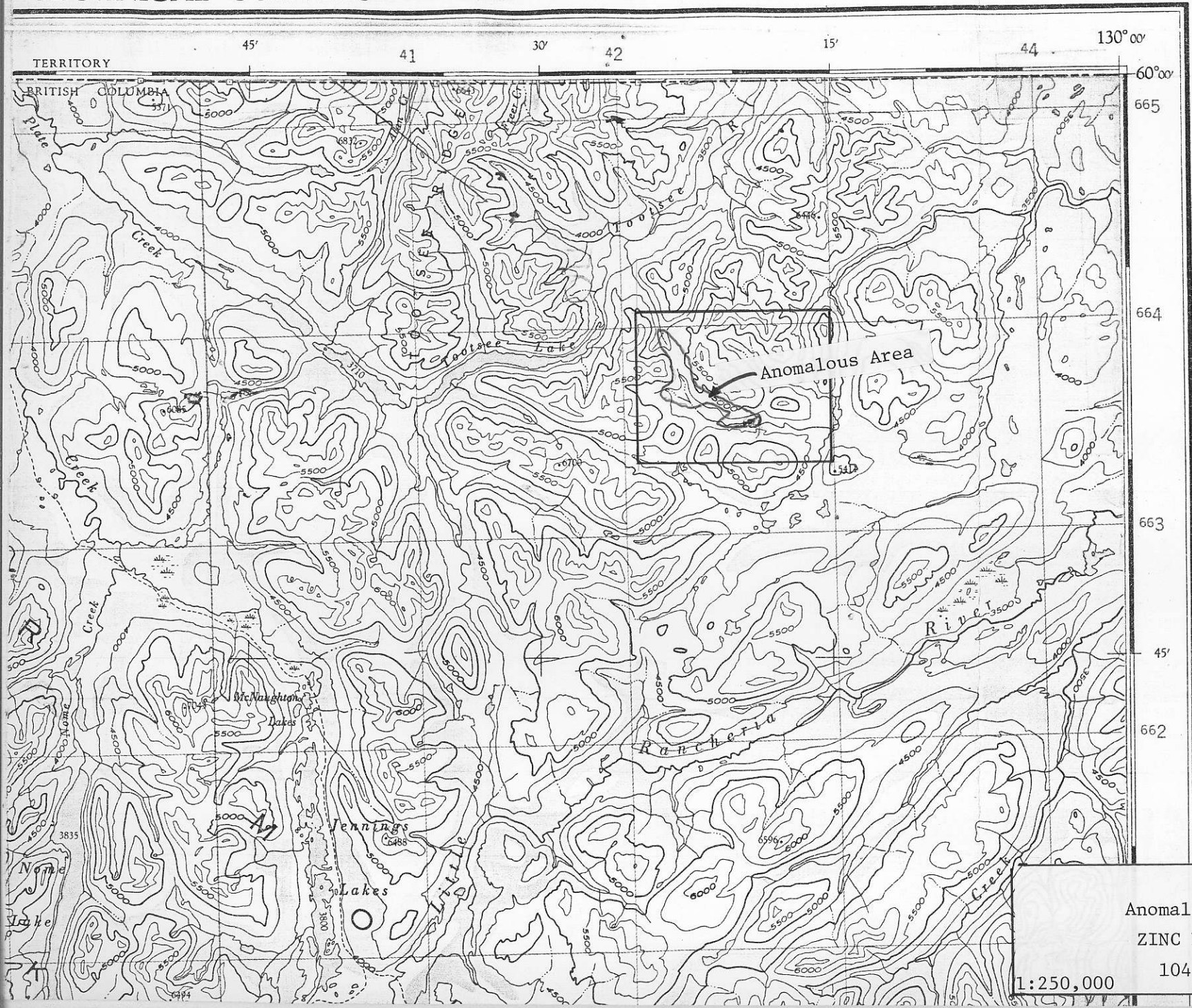
J.C. Stephen

JCS/ms



Cross-sections along lines A-B-C





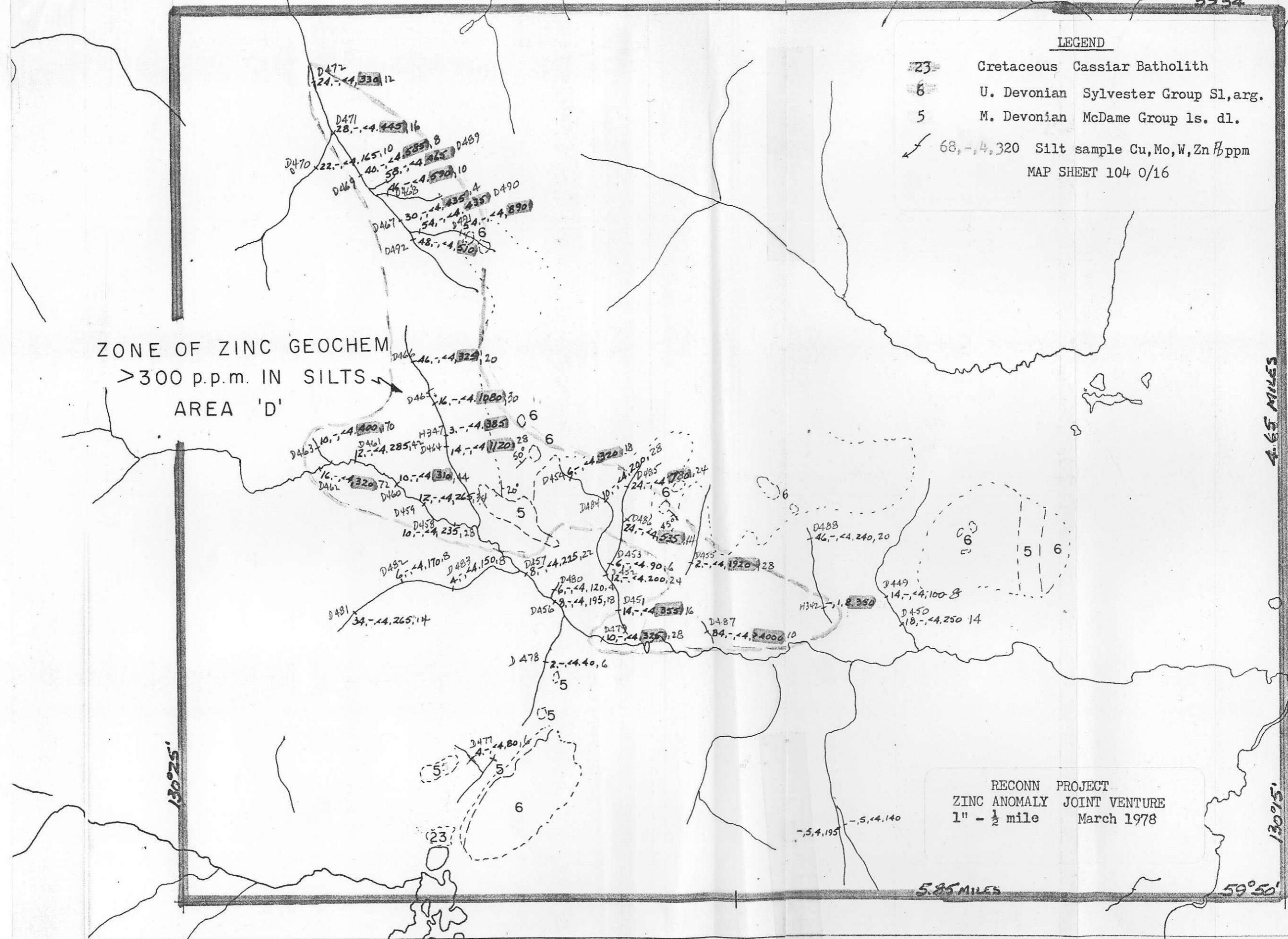
Anomalous Area
ZINC PROJECT
104 'O'
1:250,000

59°54'

LEGEND

- 23 Cretaceous Cassiar Batholith
 - 6 U. Devonian Sylvester Group Sl, arg.
 - 5 M. Devonian McDame Group ls. dl.
 - ↙ 68, -, 4, 320 Silt sample Cu, Mo, W, Zn ppm
- MAP SHEET 104 0/16

ZONE OF ZINC GEOCHEM
> 300 p.p.m. IN SILTS
AREA 'D'



RECONN PROJECT
ZINC ANOMALY JOINT VENTURE
1" - 1/2 mile March 1978

4.65 MILES

5.85 MILES

130°25'

130°15'

59°50'

P. P. M. ZINC

900
800
700
600
500
400
300
200
100
0

P. P. M. LEAD



MAP 1040/16
ZINC ANOMALY PROJECT
ZINC-LEAD SCATTER