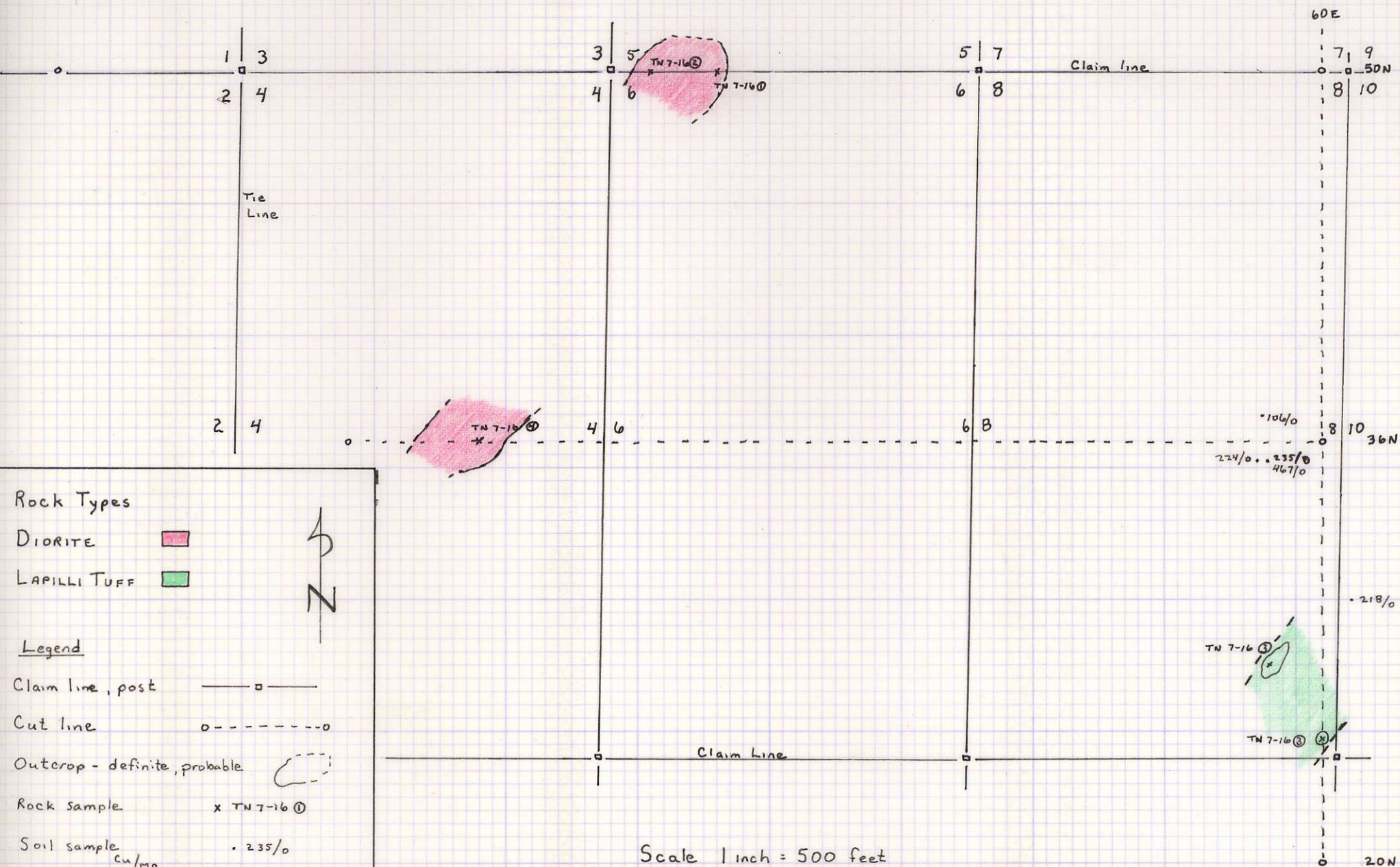
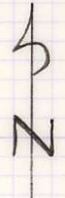


TOR GROUP



Rock Types

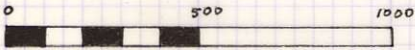
- DIORITE
- LAPILLI TUFF



Legend

- Claim line, post
- Cut line
- Outcrop - definite, probable
- Rock sample x TN 7-16
- Soil sample • 235/0
cu/mo

Scale 1 inch = 500 feet



T.W. NEUFELDT
JULY 1973

673866

DIETZGEN 100% Rag Tracing Vellum

TOR Group.

July 16/73

TW NEUFEST.

TN 73-7-16 ①

fine grained green intrusive
rock, Mn staining, magnetic
well fractured - quartz filling
several directions none prominent
(perhaps 060°/80°SW)

good outcrop - continuous

location 50N 28E

Diorite.

7-16 ②

coarser grained equivalent
of ① no fracturing.

nearly continuous outcrop ① → ②

fine to coarse grained Diorite.

50N 25.5E

7-16 ③

brown volcanic - LAPILLI TUFF

well weathered.

poor outcrop.

28N 58E

25N 60E

7-16 ④

similar to ②

36N 29E