

126°30'



BREE	3	5	7	9	11
1	2	4	6	8	10
13	15	17	19	21	23
14	16	18	20	22	24

55°00'



GROUP SKETCH
BREE CLAIMS

1" = 1 MILE JUNE 1973
BR 5300-178

673776
93m/lw

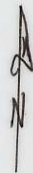
McKendrick
Is.

BABINE

LAKE

BREE	3	5	7	9	11
1	2	4	6	8	10
13	15	17	19	21	23
14	16	18	20	22	24

55°00'

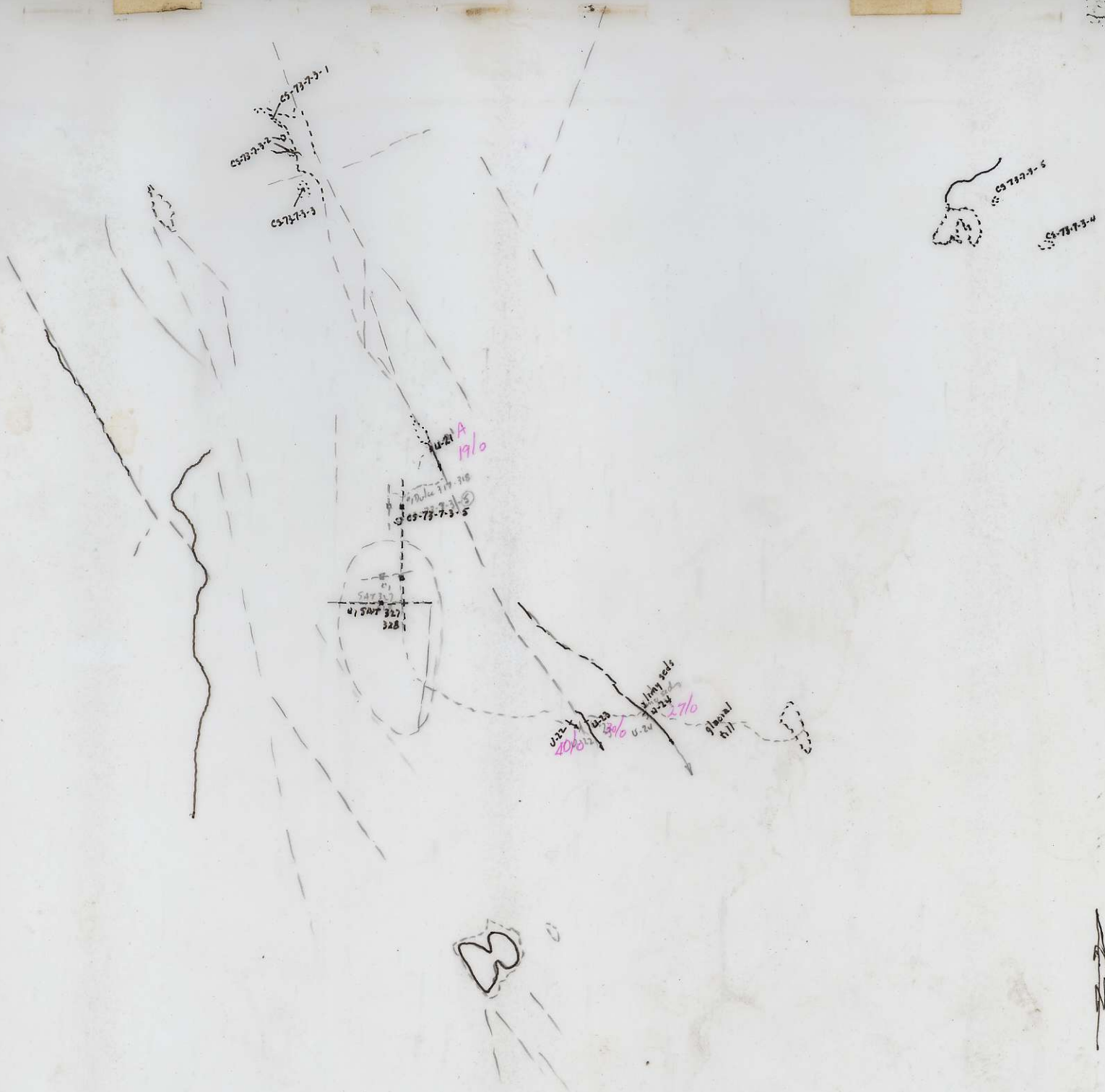


GROUP SKETCH
BREE CLAIMS

1" = 1 MILE JUNE 1973

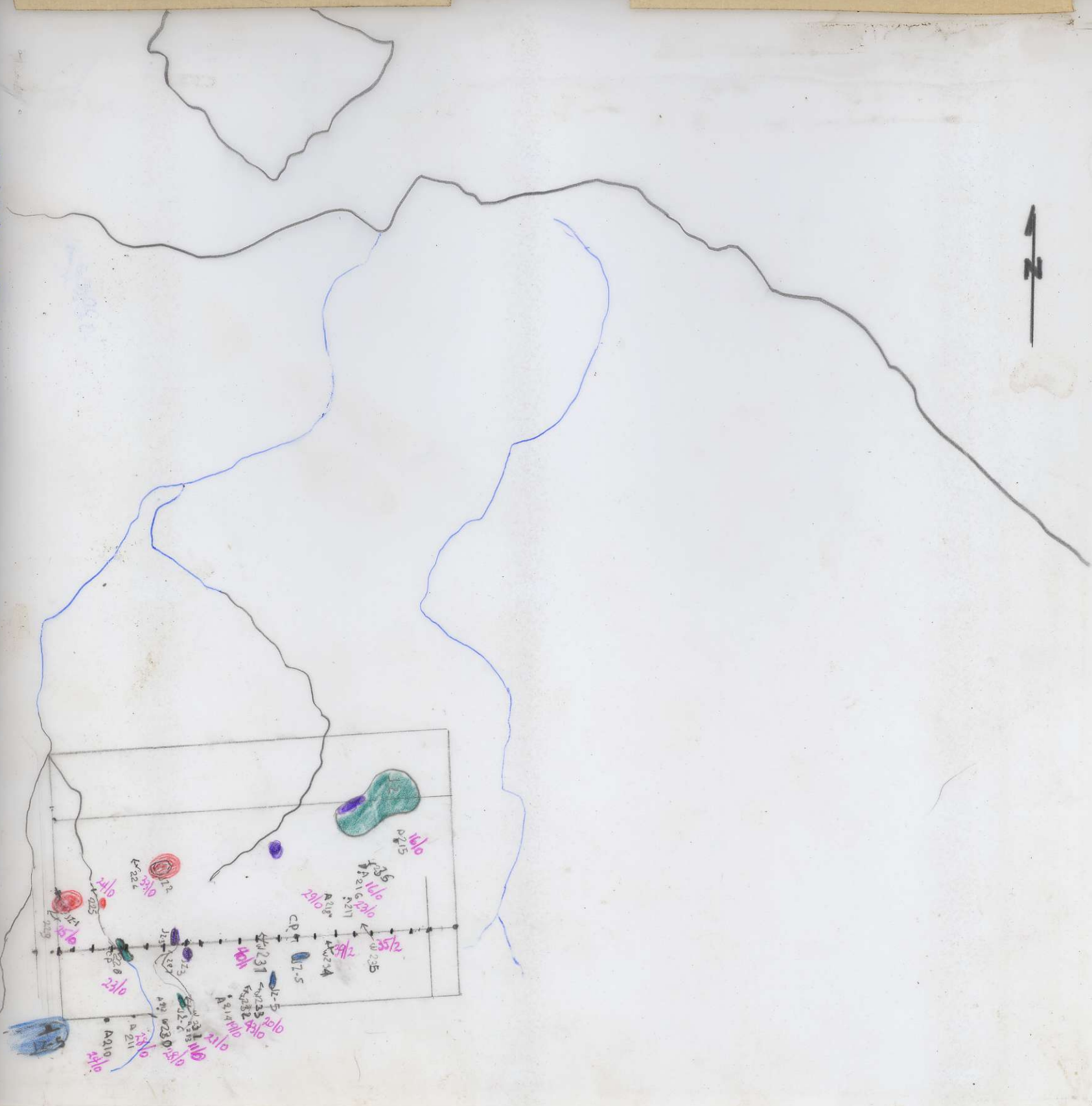
673776
93m/lw

126°30'

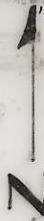




PA 5300 1175

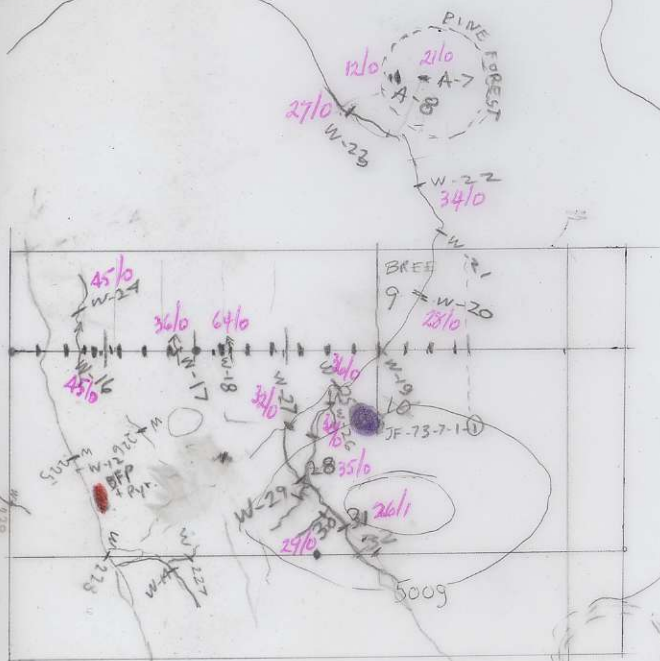


W- 203 to 211 June 12 1973
W 212 to 224 June 15 1973



BC 530 C- 259

BC 5300-176



PARTRIDGE

PC 5300-176



BC530C-258

BREE

Porphyritic
GANGUE

500g

- DP-① Dark green andesite - feldspar
& hornblende pheno - magnetic
- ② Dark feldspar, hornblende porph
- ③ Grey green andesite - hornblende pheno
very fine white feldspar
- ④ Fig. purple vol/carb str
- ⑤ Hornblende diorite? non-magnetic
andesite?
- ⑥ Blue grey fine feldspar porph
andesite?? fairly magnetic
- ⑦ Greenish grey feldspar porph surface
flow. Magnetic

