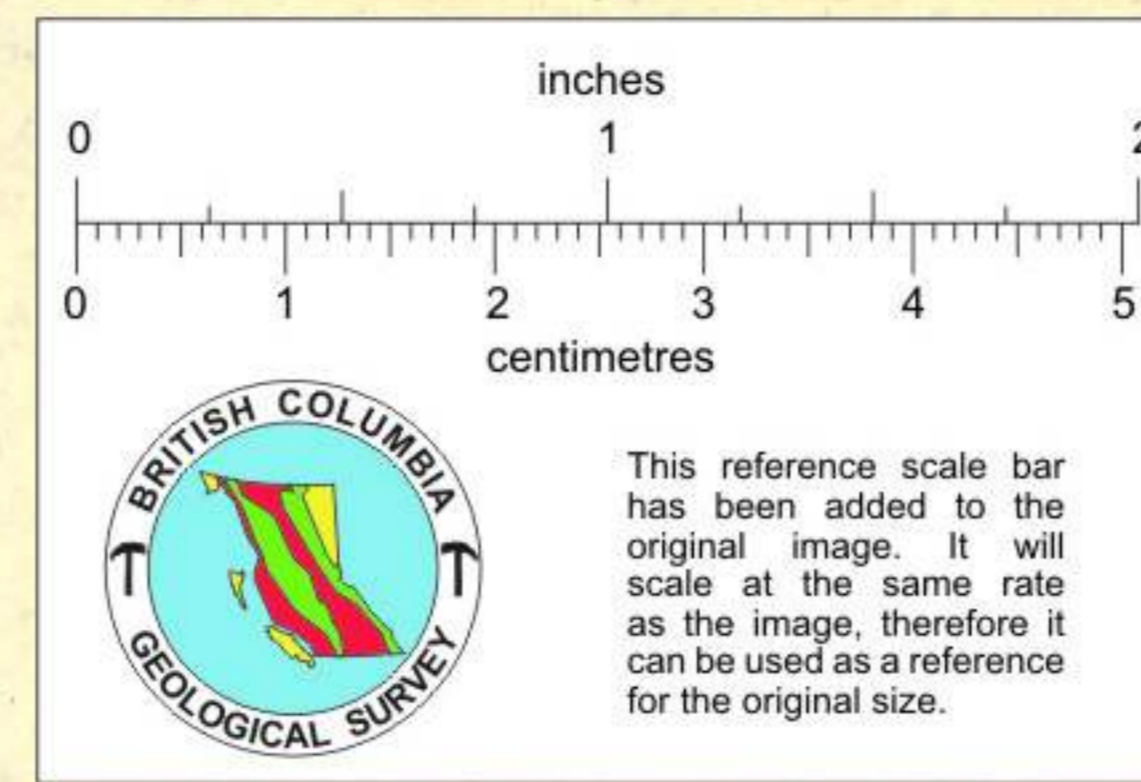
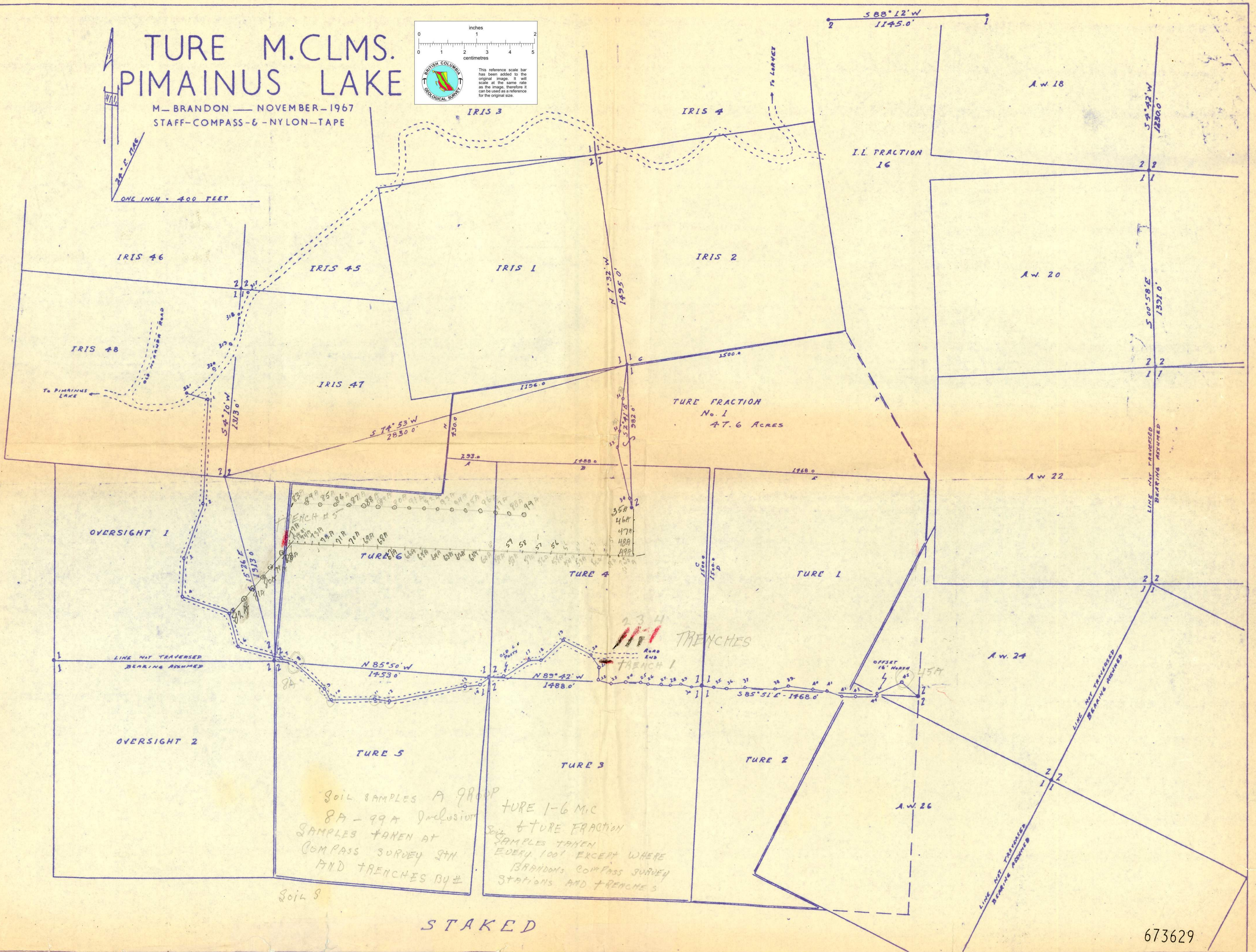


TURE M. CLMS. PIMAINUS LAKE

M-BRANDON — NOVEMBER — 1967
STAFF-COMPASS-6-NYLON-TAPE



24° E TRAG
ONE INCH = 400 FEET



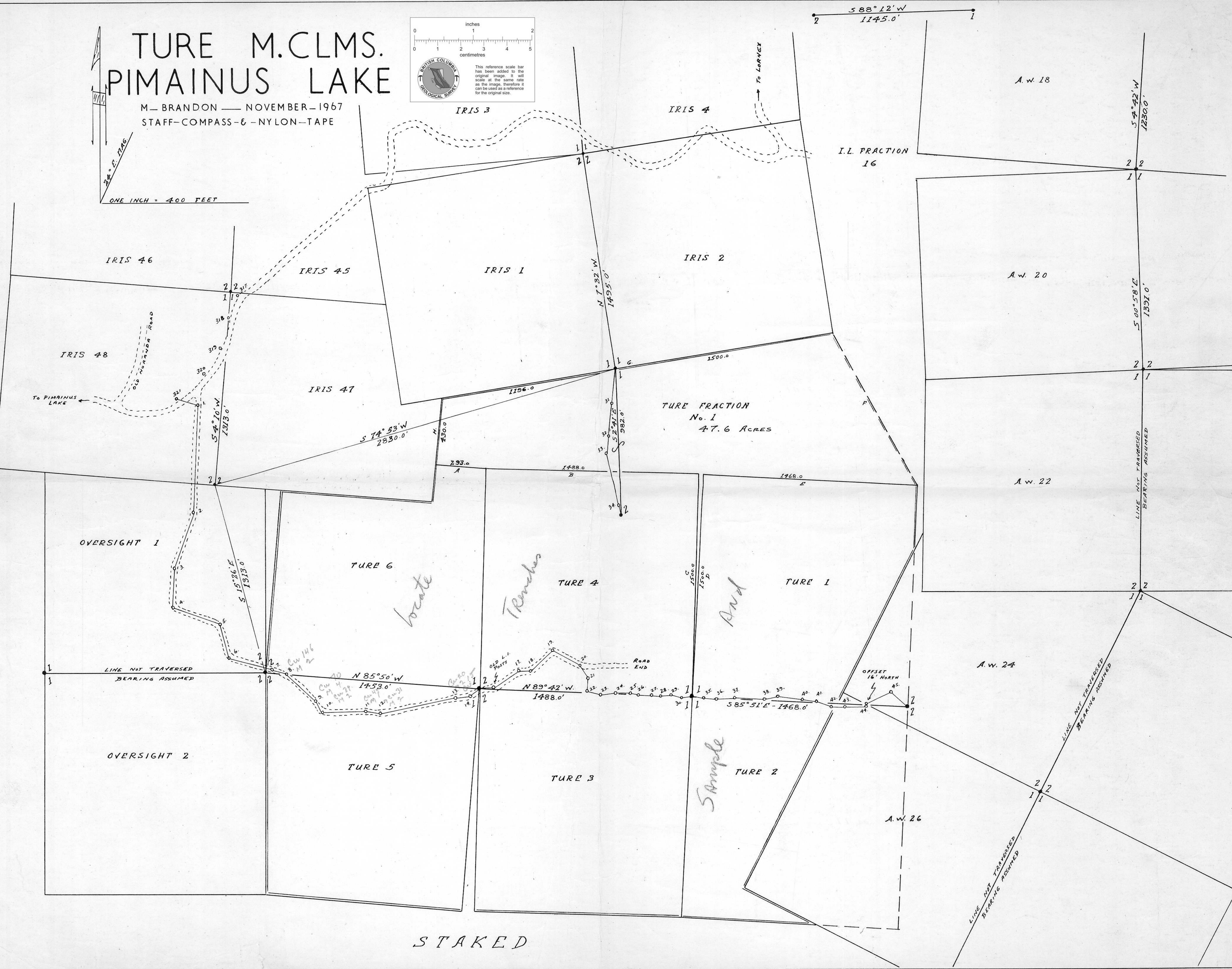
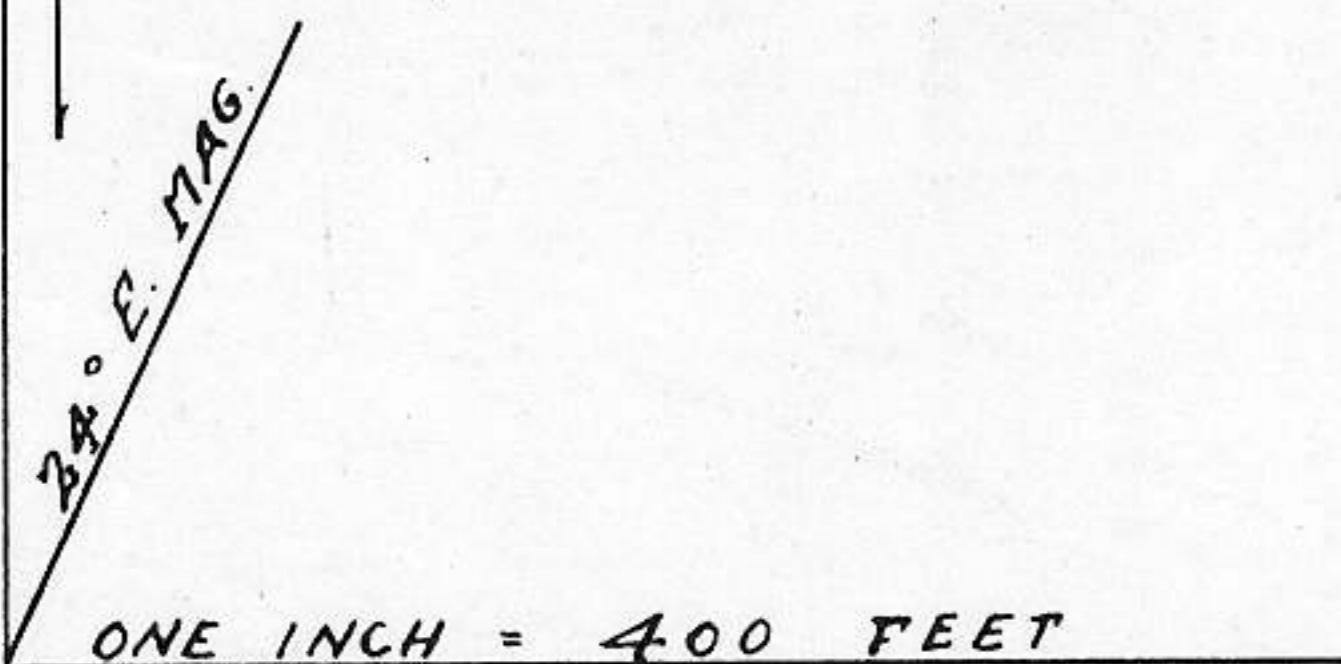
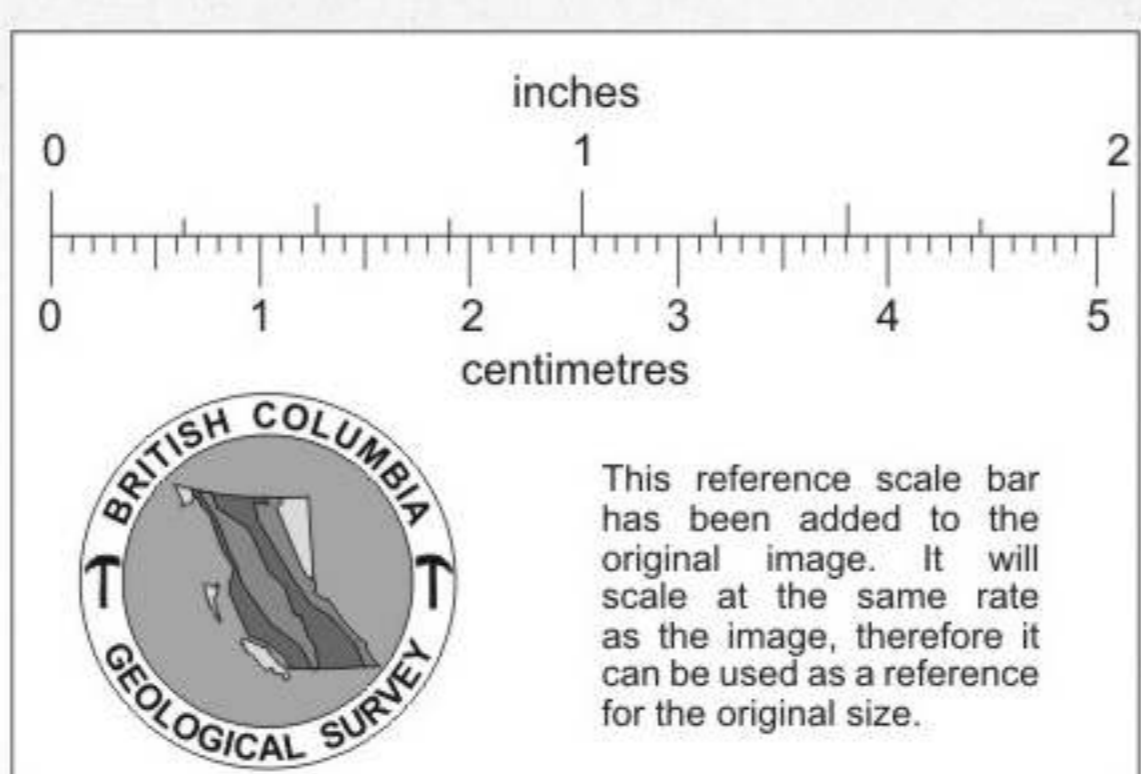
SOIL SAMPLES A GROUP
8A-99A INCLUSIONS
SAMPLES TAKEN AT
COMPASS SURVEY STN
AND TRENCHES BY [signature]

TURE 1-6 MIC
SOIL & TURE FRACTION
SAMPLES TAKEN
EVERY 100' EXCEPT WHERE
BRANDON'S COMPASS SURVEY
STATIONS AND TRENCHES

STAKED

TURE M. CLMS. PIMAINUS LAKE

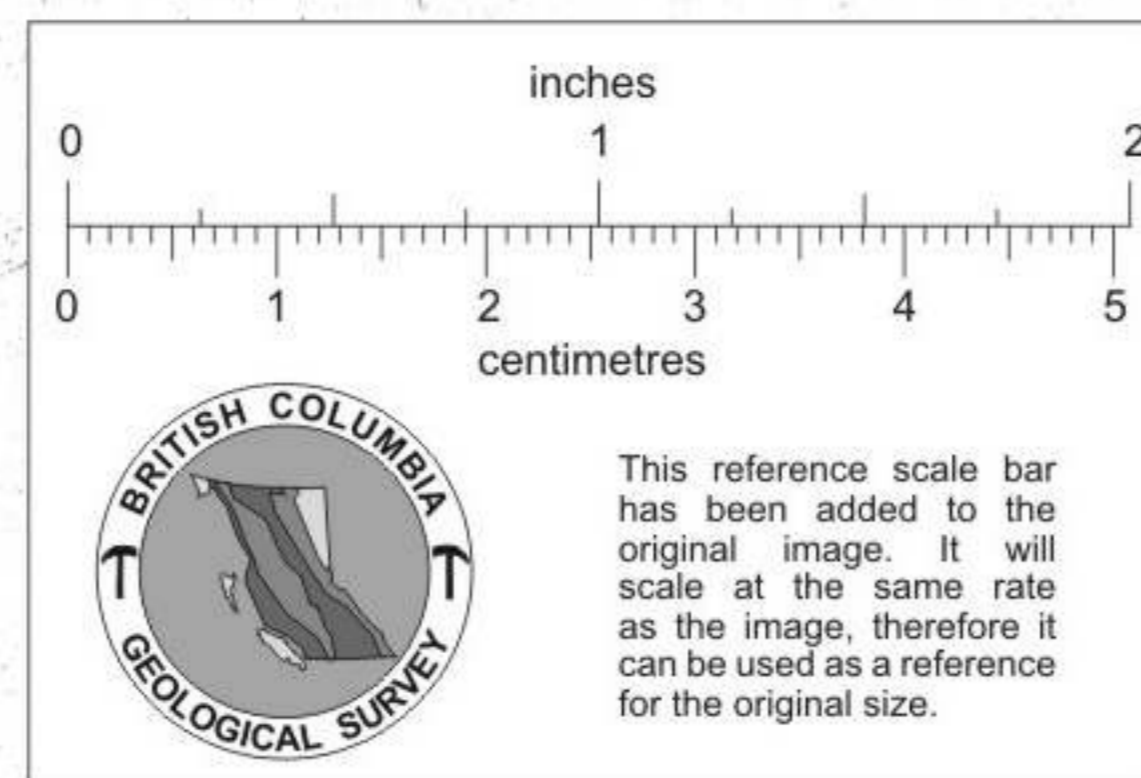
M—BRANDON—NOVEMBER—1967
STAFF—COMPASS—&—NYLON—TAPE



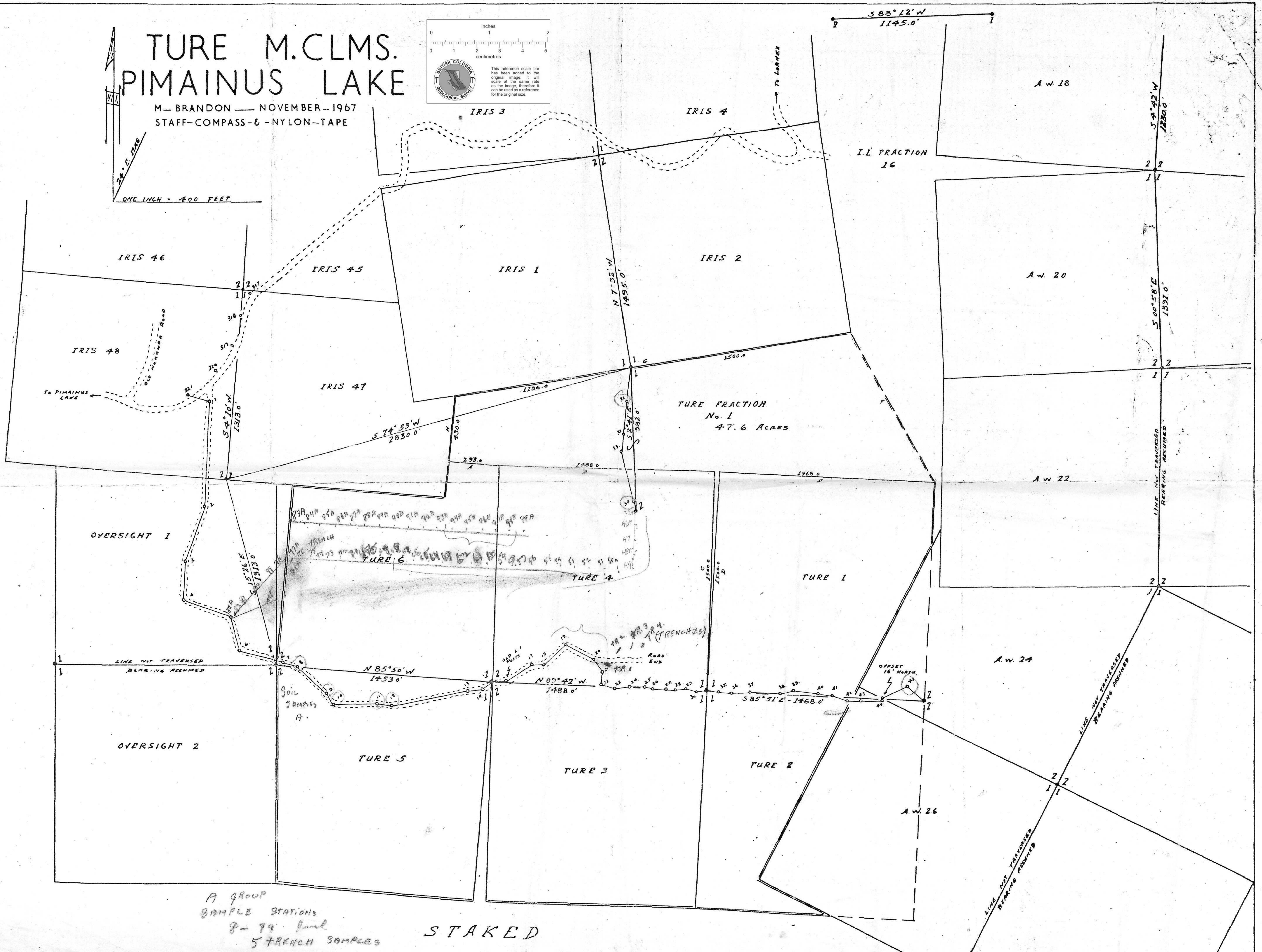
STAKED

TURE M. CLMS. PIMAINUS LAKE

M-BRANDON — NOVEMBER-1967
STAFF-COMPASS-6-NYLON-TAPE



ONE INCH = 400 FEET



A GROUP
SAMPLE STATIONS
8-99 level
5 TRENCH SAMPLES

STAKED